

10

9

7

6

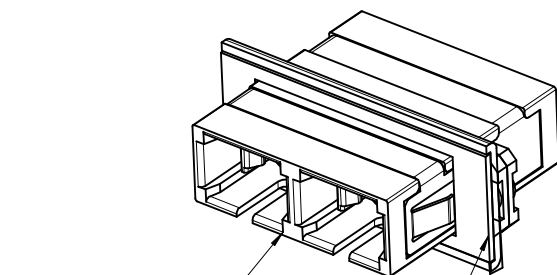
5

4

3

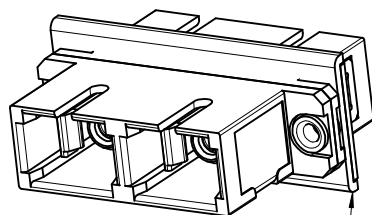
2

106116

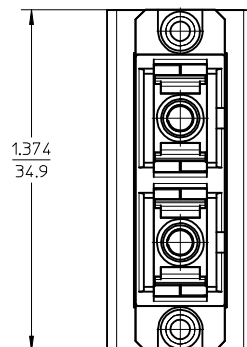
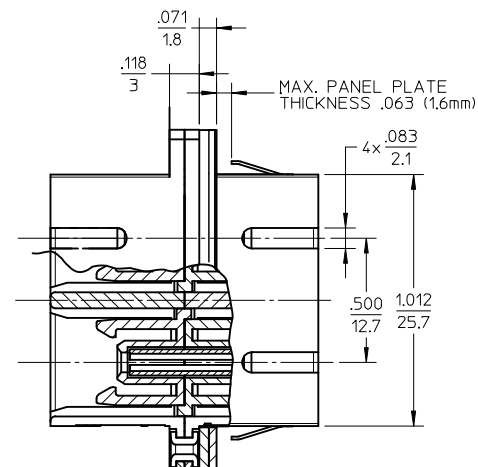
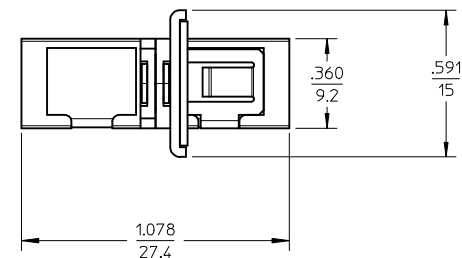


SCD METAL ADAPTER

EMI GASKET



GASKET PLATE

 $.370 \pm .005$
 9.5 ± 0.1
 $1.030 \pm .005$
 26 ± 0.1
RECOMMENDED
MOUNTING CUTOUT
 1.374
 34.9

 $.071$
 1.8
 $.118$
 3
MAX. PANEL PLATE
THICKNESS .063 (1.6mm)
 $4 \times .083$
 2.1
 $.500$
 12.7
 1.012
 25.7

 $.360$
 9.2
 $.591$
 15
 1.078
 27.4

NOTES:

1. ALL DIMENSIONS ARE FOR REFERENCE ONLY.
2. DUST CAPS ARE NOT SHOWN BUT INCLUDED.
3. SCD METAL ADAPTER CONTAINS ZIRCONIA CERAMIC ALIGNMENT SLEEVES.
4. SCD EMI ADAPTER MEETS APPLICABLE EIA/TIA STANDARDS.

ENTER DESCRIPTION EC NO: MF2010-0156 DRWN: JSZEWczyk 2009/10/07 CHKD: 2009/10/07 APPR: IGUMIN 2009/10/07 A			QUALITY SYMBOLS ▽=0 ▽=0	GENERAL TOLERANCES (UNLESS SPECIFIED)		DIMENSION STYLE IN/MM		SCALE 2:1	DESIGN UNITS INCH	THIRD ANGLE PROJECTION					
					mm	INCH	DRAWN BY JSZEWczyk		DATE 2009/10/05		TITLE SCD EMI ADAPTER W/O SHIELD				
				4 PLACES	± ---	± ---	CHECKED BY		DATE						
				3 PLACES	± ---	± ---	APPROVED BY IGUMIN		DATE 2009/10/05		MOLEX MOLEX INCORPORATED				
				2 PLACES	± ---	± ---									
				1 PLACE	± ---	± ---	MATERIAL NO. 1061161001		DOCUMENT NO. SD-106116-1001				SHEET NO. 1 OF 1		
				DRAFT WHERE APPLICABLE MUST REMAIN WITHIN DIMENSIONS			ANGULAR ±1/2°		SIZE B				THIS DRAWING CONTAINS INFORMATION THAT IS PROPRIETARY TO MOLEX INCORPORATED AND SHOULD NOT BE USED WITHOUT WRITTEN PERMISSION		

9

8

7

6

5

4

3

2

1