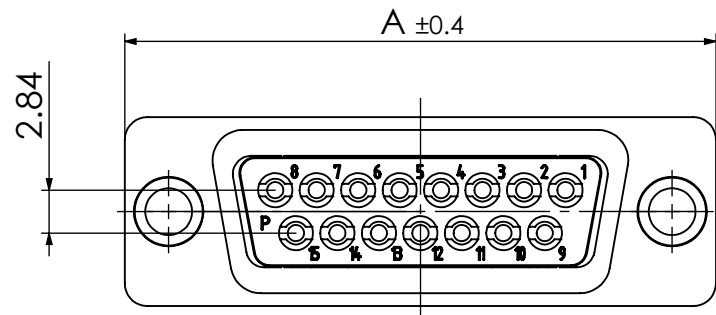
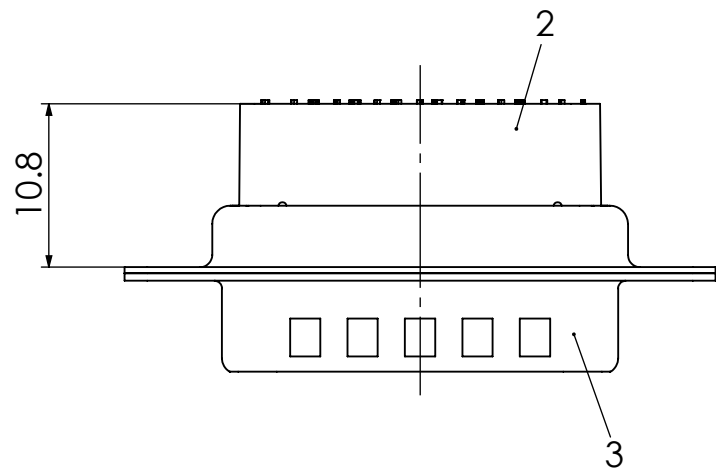
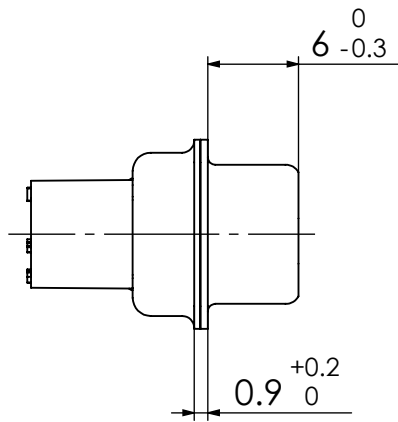
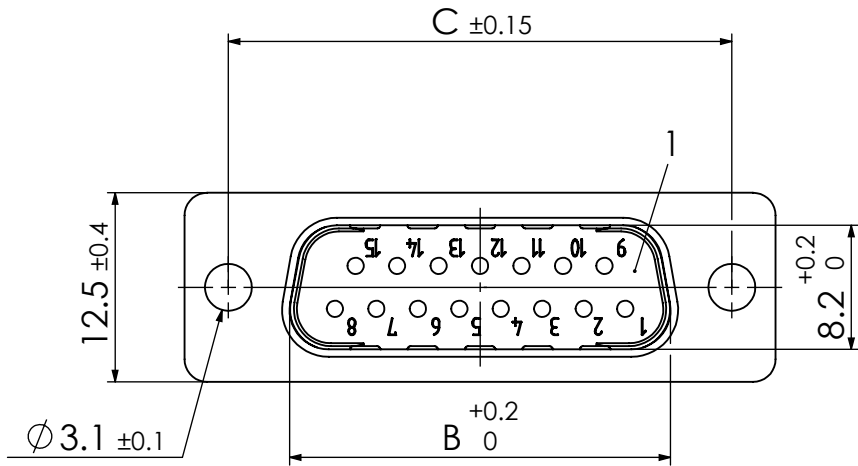


COMMENT:
ALL RIGHTS ARE RESERVED BY US FOR THIS DRAWING. WITHOUT OUR PRIOR CONSENT,
IT MAY NEITHER BE DUPLICATED NOR MADE AVAILABLE TO A THIRD PARTY.
AND IT ALSO MAY NOT BE IMPROPERLY USED BY THE RECEIVER, OR A THIRD PARTY.



Fy^{*1)}xx^{*2)}P7-K120

e.g. FL25P7-K120

*1) y for series FL or FU
*2) xx No. of contacts 09, 15, 25 or 37

MATERIAL NUMBER	y *1)	xx *2)	A [mm]	B [mm]	C [mm]
1727040009	L	09	30.8	16.9	25
1731090295	U				
1727040001	L	15	39.1	25.2	33.3
1731090327	U				
1727040003	L	25	53	38.9	47.04
1731090315	U				
1727040005	L	37	69.3	55.3	63.5
1731090516	U				

Technical data for modification (FU)
Crimp contacts FK20P (AWG 20-24/1.3µm Au) included in delivery.

RoHS compliant
by exemption

3	1	Shell	Steel	tin plated
2	1	Insulator rear part	PEI (-55°C to +130°C)	green
1	1	Insulator front part	PBT acc. UL94V-0	green
No.	St.	Part	Type Description/Material	Surface plating/Colour/Class

Technical data for modification (FL)
Crimp contacts not supplied with connector. Contacts must be ordered separately.

RoHS compliant

3	1	Shell	Steel	tin plated
2	1	Insulator rear part	PA (-55°C to +115°C)	black
1	1	Insulator front part	PBT acc. UL94V-0	black
No.	St.	Part	Type Description/Material	Surface plating/Colour/Class

FUNCTIONAL SYMBOLS ▽ = 0 ▽ = 0 ▽ = 0	THIS DRAWING CONTAINS INFORMATION THAT IS PROPRIETARY TO MOLEX ELECTRONIC TECHNOLOGIES, LLC AND SHOULD NOT BE USED WITHOUT WRITTEN PERMISSION			
	DIMENSION UNITS mm	SCALE 2:1	MEASUREMENTS WITHOUT TOLERANCE ACC. TO ISO 2768-mK	molex
	5 4 3 2 1 REV.	24410 24130 23123 21782 CH.-NO.	CURRENT REVISION DRWN: DRAWN BY msteinbrueck 25-01-2024 APPR: APPR BY mteubel 25-01-2024 INITIAL REVISION DRWN: DRAWN BY Denzinger 21-11-2003 APPR: APPR BY ffloßmann 21-11-2003	PRODUCT CUSTOMER DRAWING MATERIAL NUMBER see table REVISION 5
	REPLACEMENT FOR: 1727040009_Rev. A	FRIST ANGLE PROJECTION A3-SIZE	DRAWING A3-SIZE	
DOCUMENT NUMBER FyxxP7-K120				CUSTOMER GENERAL MARKET SHEET NUMBER 1 OF 1