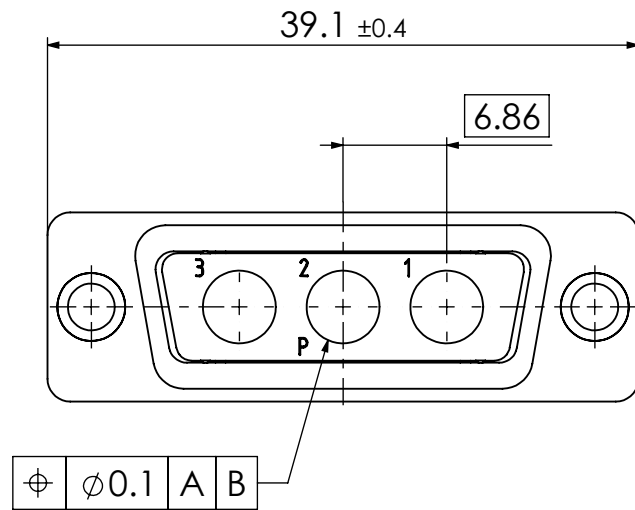
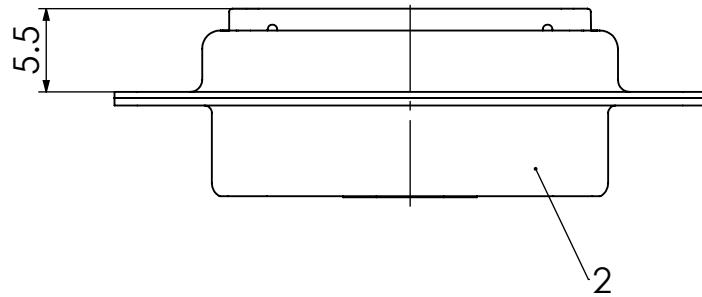
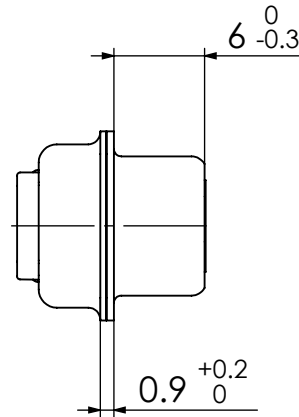
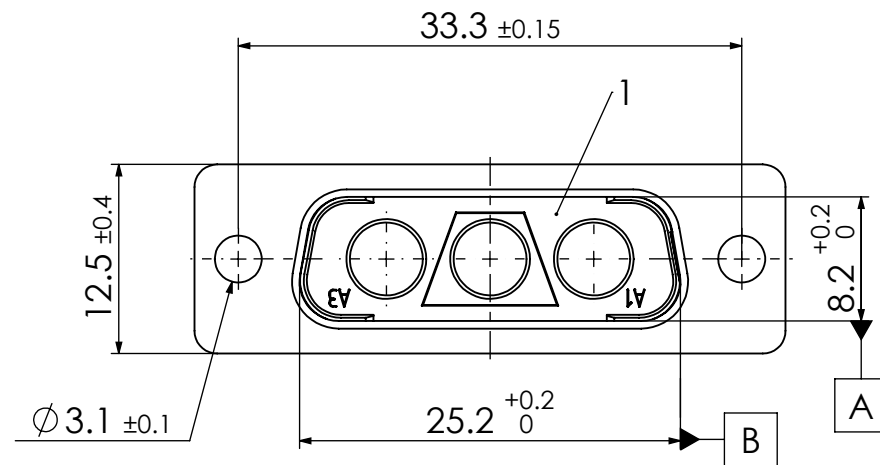


RoHS compliant



2	1	Shell	Steel	tin plated
1	1	Insulator	PBT (-55°C to +130°C) acc. UL94V-0	black
No.	St.	Part	Type Description/Material	Surface plating/Colour/Class

FUNCTIONAL SYMBOLS <div> = 0</div> <div> = 0</div> <div> = 0</div>	THIS DRAWING CONTAINS INFORMATION THAT IS PROPRIETARY TO MOLEX ELECTRONIC TECHNOLOGIES, LLC AND SHOULD NOT BE USED WITHOUT WRITTEN PERMISSION											
	DIMENSION UNITS		SCALE		MEASUREMENTS WITHOUT TOLERANCE ACC. TO			<div>molex</div>				
	mm		2:1		ISO 2768-m							
					CURRENT REVISION			FCT D-Sub Mixed-Layout Connector				
					DRWN: DRAWN BY msteinbrueck 19-12-2023							
					APPR: APPR BY msteinbrueck 19-12-2023							
	3		24410		INITIAL REVISION			PRODUCT CUSTOMER DRAWING				
	2		24130		DRWN: DRAWN BY tschneider01 05-01-2017 APPR: APPR BY msteinbrueck 05-01-2017			MATERIAL NUMBER		REVISION		
	1							1731070687		3		
	REV.		CH.-NO.		REPLACEMENT FOR:		FRIST ANGLE PROJECTION		DRAWING		DOCUMENT NUMBER	CUSTOMER
				1731070687_Rev.A1				A3-SIZE		F3W3PC-K121	GENERAL MARKET	1 OF 1