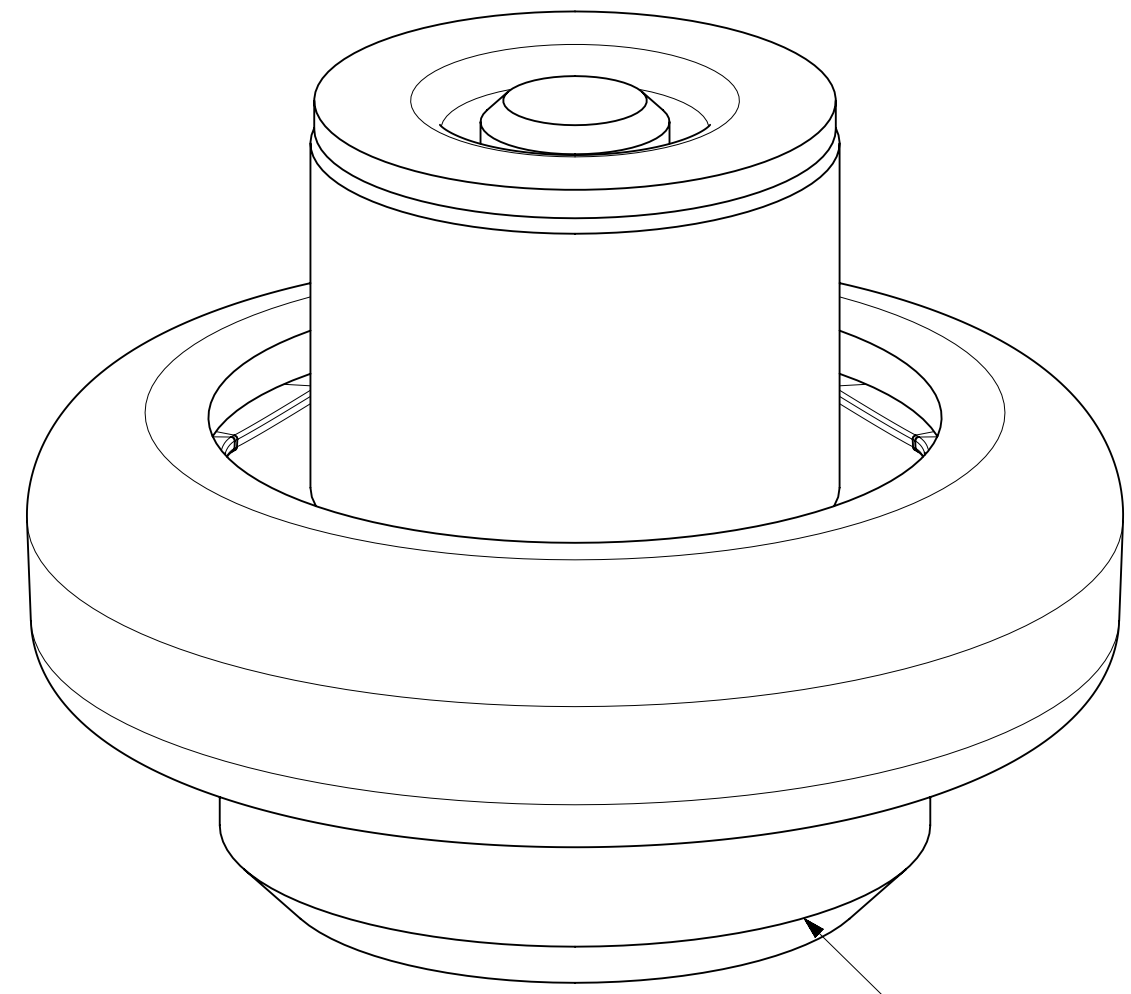
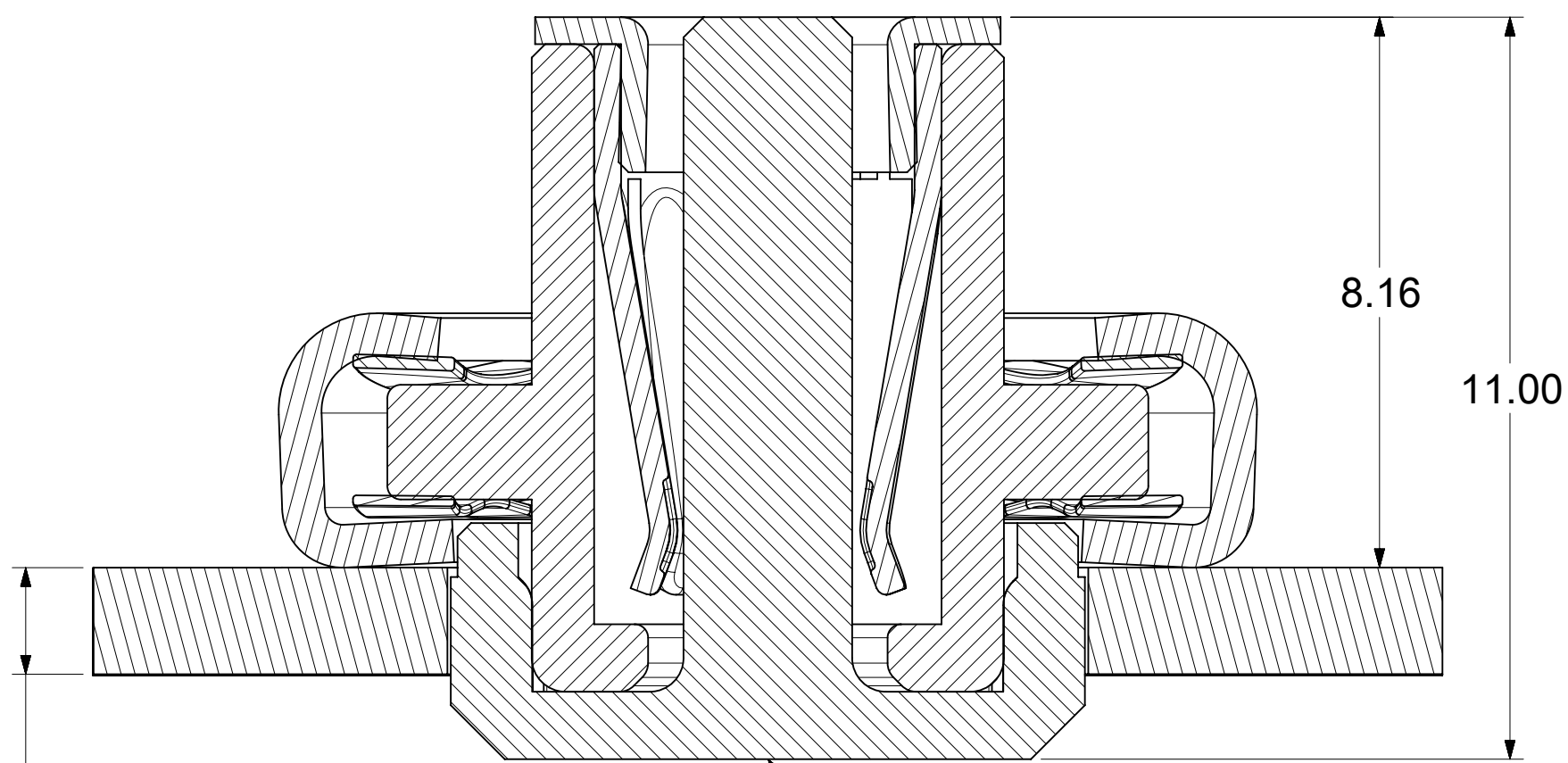


The diagram illustrates a geometric construction involving two concentric circles. A vertical line passes through the common center of the circles. A line segment with arrows at both ends passes through the center, intersecting both circles. A line segment with an arrow at one end is tangent to the inner circle at the top point of intersection with the vertical line.

— Ø9.50 ^{+0.10}/_{-0.00} PTH
SEE NOTE 5 FOR DETAILS



Technical drawing of a mechanical part, showing a cross-section with dimensions: $\varnothing 14.50$, 10.00, 3.77, 1.84, and $\varnothing 7.00$. The drawing includes a central vertical axis and a horizontal section line labeled 'A'.





— PICK AND PLACE CAP SHOWN

SOCKET ASSEMBLY

PIN ASSEMBLY

RECOMMENDED
MINIMUM MATING
HEIGHT (SEE NOTE 3)

1. MATERIALS: COPPER ALLOY
2. PLATING:
 - i. CONTACT AREA: GOLD
 - ii. REST: SILVER WITH TARNISH INHIBITOR
3. PLATING ON BODY: 3.18 MICRON MIN SILVER OVER 1.27 MICRON MIN NICKEL
3. MATES WITH STANDARD PIN DRAWINGS (MATING DISTANCE BASED ON 1.58MM BOARD THICKNESS):
 - i. 3.4MM SMT DRAWING 2032631134-SD, MIN. MATING DISTANCE 3.34MM
 - ii. 3.4MM PRESS FIT DRAWING 2032630034-SD, MIN. MATING DISTANCE 3.09MM
4. PRODUCT SPECIFICATION: 2043130018-PS
5. APPLICATION SPECIFICATION: 2043130018-AS
SEE APPLICATION SPEC FOR SOLDERING INFORMATION.
6. PACKAGING SPECIFICATION: 2121955118-PK
7. SILVER COMPONENTS WILL BE SUPPLIED TARNISH FREE BUT MAY TARNISH OVER TIME.
8. PICK AND PLACE CAP TO BE REMOVED AFTER SOLDERING.
CAP TO BE PUSHED OUT OF BOTTOM FROM THE TOP.

FUNCTIONAL SYMBOLS <div>F_A = 0</div> <div>F_C = 0</div> <div>F_D = 0</div> DIVISIONAL SYMBOLS	THIS DRAWING CONTAINS INFORMATION THAT IS PROPRIETARY TO MOLEX ELECTRONIC TECHNOLOGIES, LLC AND SHOULD NOT BE USED WITHOUT WRITTEN PERMISSION															
	DIMENSION UNITS		SCALE		CURRENT REV DESC: UPDATED DRAWING NUMBER IN NOTES SECTION				<div>molex</div>							
	mm		NTS													
	GENERAL TOLERANCES (UNLESS SPECIFIED)				3.4MM SENTRALITY BOTTOM ENTRY SMT SOCKET WITH FLOAT IN T&R											
	ANGULAR TOL ± 0.5 °															
	4 PLACES		±		EC NO: 792035 DRWN: AKASHM6 2024/07/10 CHK'D: SACHIK7 2024/07/12 APPR: HTHYAGARAJ 2024/07/16				PRODUCT CUSTOMER DRAWING							
	3 PLACES		±													
	2 PLACES		± 0.15													
	1 PLACE		± 0.25		INITIAL REVISION: DRWN: JJONIAK 2020/06/01 APPR: BPISZCZOR 2020/10/29				DOCUMENT NUMBER		DOC TYPE		DOC PART		REVISION	
	0 PLACES		±						2121955118-SD		PSD		000		A3	
DRAFT WHERE APPLICABLE MUST REMAIN WITHIN DIMENSIONS				THIRD ANGLE PROJECTION		DRAWING		SERIES		MATERIAL NUMBER		CUSTOMER		SHEET NUMBER		
				 		D-SIZE		212195		2043655118		GENERAL MARKET		1 OF 1		