

1026937  
<https://www.phoenixcontact.com/us/products/1026937>

Please be informed that the data shown in this PDF document is generated from our online catalog. Please find the complete data in the user documentation. Our general terms of use for downloads are valid.



Unmanaged PoE Switches 1000, 1 RJ45 port 10/100/1000 Mbps, 4 RJ45 ports 10/100/1000 Mbps

Your advantages

- POE status LED per port
- Wide-range power supply of 18 ... 57 V DC
- Wide -40° ... +75°C temperature range
- Autocrossing
- Auto negotiation
- Redundant power supply
- Automatic detection of IEEE 802.3at or 802.3af powered devices

Commercial data

Item number	1026937
Packing unit	1 pc
Minimum order quantity	1 pc
Sales key	DN18
Product key	DNN115
Catalog page	Page 303 (C-6-2019)
GTIN	4055626519692
Weight per piece (including packing)	623.1 g
Weight per piece (excluding packing)	623 g
Customs tariff number	85176200
Country of origin	TW

# FL SWITCH 1001T-4POE-GT - Industrial Ethernet Switch



1026937

<https://www.phoenixcontact.com/us/products/1026937>

## Technical data

### Dimensions

Width	30 mm
Height	149 mm
Depth	107.8 mm

### Notes

Notes on operation	Mode A PoE
Note on application	
Note on application	Only for industrial use
Utilization restriction	
EMC note	EMC: class A product, see manufacturer's declaration in the download area

### Mounting

Mounting type	DIN rail mounting
---------------	-------------------

### Interfaces

#### Ethernet

Connection method	RJ45
Note on the connection method	Auto negotiation and autocrossing
Transmission speed	10/100/1000 Mbps
Transmission physics	Ethernet RJ45
Transmission length	100 m (Between transmitter / receiver)
Signal LEDs	LNK/ACT, POE
No. of channels	1 (RJ45 port)

#### Ethernet (PoE)

Connection method	RJ45
Transmission speed	10/100/1000 Mbps
Transmission physics	Ethernet RJ45
Transmission length	100 m (Between transmitter / receiver)
Signal LEDs	LNK/ACT, POE
No. of channels	4 (RJ45 ports)

### Product properties

Product type	Switch
Product family	Unmanaged PoE Switches 1000
Type	Stand-Alone
MTTF	72.1 Years (MIL-HDBK-217F standard, temperature 25°C, operating cycle 100%)

### Data management status

# FL SWITCH 1001T-4POE-GT - Industrial Ethernet Switch



1026937

<https://www.phoenixcontact.com/us/products/1026937>

Article revision	02
------------------	----

## Switch functions

Basic functions	Store-and-forward switch, 10/100/1000 Mbps, auto negotiation, redundant power supply, PoE according to IEEE 802.3at/802.3af, jumbo frames up to 10240 bytes, alarm contact
Signal contact control voltage	48 V DC
Signal contact control current	0.5 A
Status and diagnostic indicators	LEDs: U <sub>S1</sub> , U <sub>S2</sub> (redundant voltage supply), Alarm (alarm contact), Link/Activity and PoE per Ethernet port
Additional functions	Autonegotiation

## Security functions

Basic functions	Store-and-forward switch, 10/100/1000 Mbps, auto negotiation, redundant power supply, PoE according to IEEE 802.3at/802.3af, jumbo frames up to 10240 bytes, alarm contact
-----------------	--

## Electrical properties

Local diagnostics	US1, US2 Supply voltage Green LED
	PoE PoE detection Orange LED
	LNK/ACT Link status/data transmission Green LED
	Alarm Power failure at US1 or US2/Link failure
Maximum power dissipation for nominal condition	128 W (at 48 V DC)

## Supply

Supply voltage (DC)	24 V DC
Supply voltage	48 V DC
Supply voltage range	18 V DC ... 57 V DC
Power supply connection	Via COMBICON, max. conductor cross section 2.5 mm <sup>2</sup>
Inrush current	32.1 A (24 V DC for 3540 µs)
Residual ripple	3.6 V <sub>PP</sub> (within the permitted voltage range)
Max. current consumption	6.93 A (Maximum, nominal load)
Typical current consumption	165 mA (at U <sub>S</sub> = 24 V DC)

## Function

Signal contact control voltage	48 V DC
Signal contact control current	0.5 A

## Connection data

### Connection technology

Connection name	Power supply
-----------------	--------------

### Power supply

Connection method	Screw connection
Conductor cross section, rigid	0.2 mm <sup>2</sup> ... 2.5 mm <sup>2</sup>
Conductor cross section, flexible	0.2 mm <sup>2</sup> ... 2.5 mm <sup>2</sup>
Conductor cross section AWG	24 ... 12

# FL SWITCH 1001T-4POE-GT - Industrial Ethernet Switch



1026937

<https://www.phoenixcontact.com/us/products/1026937>

Stripping length	7 mm
------------------	------

## Environmental and real-life conditions

### Ambient conditions

Degree of protection	IP30
Ambient temperature (operation)	-40 °C ... 75 °C
Ambient temperature (storage/transport)	-40 °C ... 85 °C
Permissible humidity (operation)	5 % ... 95 % (non-condensing)
Permissible humidity (storage/transport)	5 % ... 95 % (non-condensing)
Air pressure (operation)	57 kPa ... 108 kPa (up to 4850 m above mean sea level)
Air pressure (storage/transport)	57 kPa ... 108 kPa (up to 4850 m above mean sea level)

## Approvals

### Conformity/Approvals

Conformance	CE-compliant
-------------	--------------

## EMC data

Conformance with EMC directives	IEC 61000-6-2 IEC 61000-4-2 (ESD) Criterion B
	IEC 61000-4-3 (immunity to radiated interference) Criterion A
	IEC 61000-4-4 (burst) Criterion A
	IEC 61000-4-5 (surge) Criterion B
	IEC 61000-4-6 (immunity to conducted interference) Criterion A
	IEC 61000-4-8 (immunity to magnetic fields) Criterion A
Electromagnetic compatibility	EN 55022 (emitted interference) Criterion A
	Conformance with EMC Directive 2004/108/EC

## System properties

### Functionality

Basic functions	Store-and-forward switch, 10/100/1000 Mbps, auto negotiation, redundant power supply, PoE according to IEEE 802.3at/802.3af, jumbo frames up to 10240 bytes, alarm contact
-----------------	--

## Signaling

Status display	LEDs: U <sub>S1</sub> , U <sub>S2</sub> (redundant voltage supply), Alarm (alarm contact), Link/Activity and PoE per Ethernet port
----------------	--


# FL SWITCH 1001T-4POE-GT - Industrial Ethernet Switch





1026937  
<https://www.phoenixcontact.com/us/products/1026937>


## Approvals

To download certificates, visit the product detail page: <https://www.phoenixcontact.com/us/products/1026937>

**EAC**  
Approval ID: RU\*-DE.\*.B.00741/19

**UL Listed**  
Approval ID: E238705

**cUL Listed**  
Approval ID: E238705

**KC**  
Approval ID: R-R-PCK-1026937

**cULus Listed**

# FL SWITCH 1001T-4POE-GT - Industrial Ethernet Switch



1026937  
<https://www.phoenixcontact.com/us/products/1026937>

## Classifications

### ECLASS

ECLASS-11.0	19170402
ECLASS-12.0	19170402
ECLASS-13.0	19170402

### ETIM

ETIM 9.0	EC000734
----------	----------

### UNSPSC

UNSPSC 21.0	43222600
-------------	----------

1026937  
<https://www.phoenixcontact.com/us/products/1026937>

Environmental product compliance

EU RoHS	
Fulfills EU RoHS substance requirements	Yes
Exemption	15(a), 6(a)-I, 7(a), 7(c)-I
China RoHS	
Environment friendly use period (EFUP)	EFUP-10
	An article-related China RoHS declaration table can be found in the download area for the respective article under "Manufacturer declaration". For all articles with EFUP-E, no China RoHS declaration table issued and required.
EU REACH SVHC	
REACH candidate substance (CAS No.)	Lead(CAS: 7439-92-1)
SCIP	e65e70d5-e16b-4d49-b28f-493ac3a4e49a

# FL SWITCH 1001T-4POE-GT - Industrial Ethernet Switch



1026937

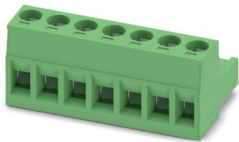
<https://www.phoenixcontact.com/us/products/1026937>

## Accessories

### MSTB 2,5/ 7-ST - PCB connector

1754546

<https://www.phoenixcontact.com/us/products/1754546>



PCB connector, nominal cross section: 2.5 mm<sup>2</sup>, color: green, nominal current: 12 A, rated voltage (III/2): 320 V, contact surface: Sn, contact connection type: Socket, number of potentials: 7, number of rows: 1, number of positions: 7, number of connections: 7, product range: MSTB 2,5/...-ST, pitch: 5 mm, connection method: Screw connection with tension sleeve, screw head form: L Slotted, conductor/PCB connection direction: 0 °, locking clip: - Locking clip, plug-in system: COMBICON MSTB 2,5, locking: without, mounting: without, type of packaging: packed in cardboard

---

### QUINT4-PS/1AC/48DC/5 - Power supply unit

2904610

<https://www.phoenixcontact.com/us/products/2904610>



Primary-switched QUINT POWER power supply for DIN rail mounting with free choice of output characteristic curve and SFB (Selective Fuse Breaking) technology, input: 1-phase, output: 48 V DC / 5 A



# FL SWITCH 1001T-4POE-GT - Industrial Ethernet Switch



1026937

<https://www.phoenixcontact.com/us/products/1026937>

## QUINT4-PS/1AC/48DC/10 - Power supply unit

2904611

<https://www.phoenixcontact.com/us/products/2904611>



Primary-switched QUINT POWER power supply for DIN rail mounting with free choice of output characteristic curve and SFB (Selective Fuse Breaking) technology, input: 1-phase, output: 48 V DC / 10 A

---

## TRIO-PS-2G/1AC/48DC/5 - Power supply unit

2903159

<https://www.phoenixcontact.com/us/products/2903159>



Primary-switched TRIO power supply for DIN rail mounting, input: 1-phase, output: 48 V DC / 5 A, dynamic boost, tool-free fast connection technology for solid and stranded conductors with ferrule

# FL SWITCH 1001T-4POE-GT - Industrial Ethernet Switch



1026937

<https://www.phoenixcontact.com/us/products/1026937>

## TRIO-PS-2G/1AC/48DC/10 - Power supply unit

2903160

<https://www.phoenixcontact.com/us/products/2903160>



Primary-switched TRIO POWER power supply with push-in connection for DIN rail mounting, input: single phase, output: 48 V DC/10 A

---

## UNO-PS/1AC/24DC/150W - Power supply unit

2904376

<https://www.phoenixcontact.com/us/products/2904376>



Primary-switched UNO power supply for DIN rail mounting, input: 1-phase, output: 24 V DC/150 W

# FL SWITCH 1001T-4POE-GT - Industrial Ethernet Switch



1026937

<https://www.phoenixcontact.com/us/products/1026937>

## UNO-PS/1AC/24DC/240W - Power supply unit

2904372

<https://www.phoenixcontact.com/us/products/2904372>



Please use the following item in new systems: 1096432.

Primary-switched UNO power supply for DIN rail mounting, input: 1-phase, output: 24 V DC / 240 W

---

## UNO2-PS/1AC/48DC/240W - Power supply unit

1110155

<https://www.phoenixcontact.com/us/products/1110155>



Primary-switched power supply unit, UNO POWER, Screw connection, DIN rail mounting, input: 1-phase, output: 48 V DC / 5 A, adjustable from 42 V DC ... 56 V DC

# FL SWITCH 1001T-4POE-GT - Industrial Ethernet Switch



1026937

<https://www.phoenixcontact.com/us/products/1026937>

## FL PD 1001 T GT - Ethernet module

2891042

<https://www.phoenixcontact.com/us/products/2891042>



Factoryline Power over Ethernet splitter (PD) for separating power and data according to IEEE 802.3af and at, no configuration required, can be used with 10, 100, 1000 Mbps networks, 24 V DC output voltage

---

## DT-LAN-CAT.6+ - Surge protection device

2881007

<https://www.phoenixcontact.com/us/products/2881007>



Surge protection in accordance with Class E<sub>A</sub> (CAT6<sub>A</sub>), for Gigabit Ethernet (up to 10 Gbps), token ring, FDDI/CDDI, ISDN, and DS1. Suitable for Power over Ethernet (PoE++ / 4PPoE) "Mode A" and "Mode B". RJ45 attachment plug with separate grounding cable and ground connection snap-on foot for NS 35 DIN rails.

# FL SWITCH 1001T-4POE-GT - Industrial Ethernet Switch



1026937

<https://www.phoenixcontact.com/us/products/1026937>

## FL CAT5 PATCH 0,5 - Patch cable

2832263

<https://www.phoenixcontact.com/us/products/2832263>

Patch cable, CAT5, assembled, 0.5 m



---

## FL CAT5 PATCH 1,0 - Patch cable

2832276

<https://www.phoenixcontact.com/us/products/2832276>

Patch cable, CAT5, assembled, 1 m



# FL SWITCH 1001T-4POE-GT - Industrial Ethernet Switch



1026937

<https://www.phoenixcontact.com/us/products/1026937>

## FL CAT5 PATCH 2,0 - Patch cable

2832289

<https://www.phoenixcontact.com/us/products/2832289>

Patch cable, CAT5, assembled, 2 m



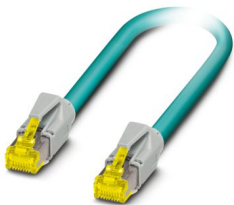
---

## NBC-R4AC-R4AC-IE8A/.../... - Patch cable

1411854

<https://www.phoenixcontact.com/us/products/1411854>

Patch cable, degree of protection: IP20, number of positions: 8, 10 Gbps, CAT6<sub>A</sub>, cable outlet: straight, Ethernet



# FL SWITCH 1001T-4POE-GT - Industrial Ethernet Switch



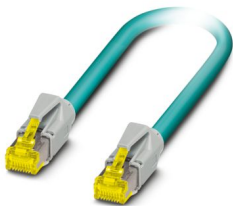
1026937

<https://www.phoenixcontact.com/us/products/1026937>

## NBC-R4AC/10G-R4AC/10G-94F/2,0 - Patch cable

1408360

<https://www.phoenixcontact.com/us/products/1408360>



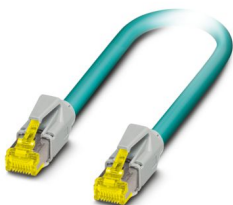
Patch cable, CAT6<sub>A</sub>, 4-pair, shielded, connection not crossed (line), assembled at both ends with RJ45/IP20 connectors, outer sheath material: PUR, length: 2.0 m

---

## NBC-R4AC/10G-R4AC/10G-94F/3,0 - Patch cable

1408365

<https://www.phoenixcontact.com/us/products/1408365>



Patch cable, CAT6<sub>A</sub>, 4-pair, shielded, connection not crossed (line), assembled at both ends with RJ45/IP20 connectors, outer sheath material: PUR, length: 3.0 m

# FL SWITCH 1001T-4POE-GT - Industrial Ethernet Switch



1026937

<https://www.phoenixcontact.com/us/products/1026937>

## FL DIN RA - DIN rail adapter

2891053

<https://www.phoenixcontact.com/us/products/2891053>

The FL DIN RA is installed in a standard, 19-inch rack (EIA-310-D, IEC 60297-3-100) to allow DIN rail mounted equipment to be rack mounted.



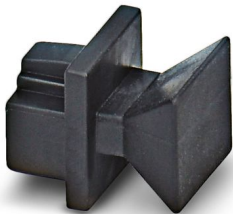
---

## FL RJ45 PROTECT CAP - Dust protection

2832991

<https://www.phoenixcontact.com/us/products/2832991>

Dust protection caps for RJ45 socket





# FL SWITCH 1001T-4POE-GT - Industrial Ethernet Switch



1026937

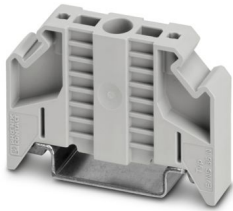
<https://www.phoenixcontact.com/us/products/1026937>

## E/NS 35 N - End bracket

0800886

<https://www.phoenixcontact.com/us/products/0800886>

End clamp, width: 9.5 mm, color: gray



---

Phoenix Contact 2024 © - all rights reserved

<https://www.phoenixcontact.com>

Phoenix Contact USA  
586 Fulling Mill Road  
Middletown, PA 17057, United States  
(+717) 944-1300  
[info@phoenixcon.com](mailto:info@phoenixcon.com)