

BTP 2043W - Touch panel



1050387

<https://www.phoenixcontact.com/us/products/1050387>

Please be informed that the data shown in this PDF document is generated from our online catalog. Please find the complete data in the user documentation. Our general terms of use for downloads are valid.



Touch panel with 10.92 cm / 4.3"-TFT display (analog resistive), 480 x 272 pixel(s) (WQVGA), 16.7 million colors, Arm® Cortex®-A7, 528 MHz i.MX6 UL, 2x COM (RS-232/422/485), 1x USB 2.0, Typ A, 1x USB 2.0, Typ B, 1 x Ethernet (10/100 Mbps), RJ45, Windows® Embedded Compact 7 and user software: Visu+. (bus system: without)

Your advantages

- Visu+ RT integrated as standard in all BTP 2000 devices
- Connection to all relevant control systems, thanks to a large number of available drivers
- Developed for basic applications with attractive price/performance ratio
- 3 display sizes in 16:9 format

Commercial data

Item number	1050387
Packing unit	50 pc
Minimum order quantity	1 pc
Sales key	DR17
Product key	DRCEBC
Catalog page	Page 471 (C-6-2019)
GTIN	4055626666587
Weight per piece (including packing)	337 g
Weight per piece (excluding packing)	324 g
Customs tariff number	84715000
Country of origin	IN

BTP 2043W - Touch panel

1050387

<https://www.phoenixcontact.com/us/products/1050387>



Technical data

Notes

Note on application

Note on application	Only for industrial use
---------------------	-------------------------

Product properties

Product type	Operator panel
--------------	----------------

Data management status

Article revision	12
------------------	----

Computer data

Processor	Arm® Cortex®-A7, 528 MHz i.MX6 UL
Operating system	Windows® Embedded Compact 7
RAM	512 MB DDR3 SDRAM
Data storage system	eMMC, 4 GB
Slots	1x SD

Display

Display type	10.92 cm / 4.3"-TFT
Screen resolution	480 x 272 Pixel(s) (WQVGA)
Touch technology	analog resistive
Display lighting type	LED
Brightness	350 cd/m², typical (adjustable)
MTBF	25000 h
Color spectrum	16.7 million colors
Reading angle left	70.00 °
Reading angle right	70.00 °
Reading angle top	50.00 °
Reading angle bottom	70.00 °

Interfaces

Interfaces	2x COM (RS-232/422/485)
	1x USB 2.0, Typ A
	1x USB 2.0, Typ B
Network	1 x Ethernet (10/100 Mbps), RJ45
Bus system	without

System properties

User software	Visu+
---------------	-------

Electrical properties

Supply

BTP 2043W - Touch panel



1050387

<https://www.phoenixcontact.com/us/products/1050387>

Power supply unit	24 V DC $\pm 15\%$
Typical current consumption	0.17 A

Mounting

Mounting type	Front mounting
---------------	----------------

Material specifications

Material front plate	Plastic
Housing material	Plastic

Environmental and real-life conditions

Ambient conditions

Degree of protection	IP66 (front), IP20 (back)
Ambient temperature (operation)	0 °C ... 50 °C
Ambient temperature (storage/transport)	-20 °C ... 85 °C
Permissible humidity (operation)	10 % ... 95 % (non-condensing)
Permissible humidity (storage/transport)	10 % ... 95 % (non-condensing)
Shock	DIN EN 60068-2-27
Vibration (operation)	DIN EN 60068-2-6

Dimensions

External dimensions

Width / Height / Depth	120 mm / 89 mm / 5 mm (Dimensions of the front plate)
------------------------	---

Installation dimensions

Width / Height / Installation depth	111 mm / 80 mm / 31.5 mm (Installation cutout)
-------------------------------------	--

BTP 2043W - Touch panel



1050387

<https://www.phoenixcontact.com/us/products/1050387>

Approvals

To download certificates, visit the product detail page: <https://www.phoenixcontact.com/us/products/1050387>



EAC

Approval ID: RU*-DE*08.B.00004/18



EAC-RoHS

Approval ID: RU*-DE*35.B.00394/20



EAC

Approval ID: RU*-DE*08.B.00004/18



EAC-RoHS

Approval ID: RU*-DE*35.B.00394/20



cUL Listed

Approval ID: E196811



UL Listed

Approval ID: FILE E 196811



UL Listed

Approval ID: FILE E 196811



cUL Listed

Approval ID: E196811

BTP 2043W - Touch panel



1050387
<https://www.phoenixcontact.com/us/products/1050387>

Classifications

ECLASS

ECLASS-11.0	27330201
ECLASS-12.0	27330201
ECLASS-13.0	27330201

ETIM

ETIM 9.0	EC001412
----------	----------

UNSPSC

UNSPSC 21.0	43211900
-------------	----------

BTP 2043W - Touch panel

1050387

<https://www.phoenixcontact.com/us/products/1050387>



Environmental product compliance

EU RoHS	
Fulfills EU RoHS substance requirements	Yes
Exemption	7(a)
China RoHS	
Environment friendly use period (EFUP)	EFUP-50
	An article-related China RoHS declaration table can be found in the download area for the respective article under "Manufacturer declaration". For all articles with EFUP-E, no China RoHS declaration table issued and required.
EU REACH SVHC	
REACH candidate substance (CAS No.)	Lead(CAS: 7439-92-1)

BTP 2043W - Touch panel



1050387

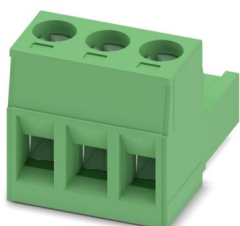
<https://www.phoenixcontact.com/us/products/1050387>

Accessories

MSTB 2,5/ 3-ST-5,08 - PCB connector

1757022

<https://www.phoenixcontact.com/us/products/1757022>



PCB connector, nominal cross section: 2.5 mm², color: green, nominal current: 12 A, rated voltage (III/2): 320 V, contact surface: Sn, contact connection type: Socket, number of potentials: 3, number of rows: 1, number of positions: 3, number of connections: 3, product range: MSTB 2,5/...-ST, pitch: 5.08 mm, connection method: Screw connection with tension sleeve, screw head form: L Slotted, conductor/PCB connection direction: 0 °, locking clip: - Locking clip, plug-in system: COMBICON MSTB 2,5, locking: without, mounting: without, type of packaging: packed in cardboard

Phoenix Contact 2024 © - all rights reserved
<https://www.phoenixcontact.com>

Phoenix Contact USA
586 Fulling Mill Road
Middletown, PA 17057, United States
(+717) 944-1300
info@phoenixcon.com