

1076882

<https://www.phoenixcontact.com/us/products/1076882>

Please be informed that the data shown in this PDF document is generated from our online catalog. Please find the complete data in the user documentation. Our general terms of use for downloads are valid.

DIN rail housing, Upper part, with transparent hinged cover, width: 50.1 mm, height: 101 mm, depth: 14.35 mm, color: black (similar RAL 9005)



Your advantages

- Flexible use, thanks to the modular system and unique modularity in the connection technology
- Standardized connections such as RJ45, USB, D-SUB and antenna sockets as components that can be integrated
- Optimal space utilization, as well as adaptability of design, colors, and printing
- Eight-position DIN rail connectors with parallel and up to two serial contacts for easy module-to-module communication

Commercial data

Item number	1076882
Packing unit	10 pc
Minimum order quantity	10 pc
Sales key	AC09
Product key	ACHAEC
GTIN	4055626787404
Weight per piece (including packing)	27.432 g
Weight per piece (excluding packing)	18.7 g
Customs tariff number	85389099
Country of origin	DE

ICS50-TL100X12-9005 - Upper housing part



1076882

<https://www.phoenixcontact.com/us/products/1076882>

Technical data

Notes

Assembly note	Refer to the data sheet for the range in the download area.
---------------	---


Product properties

Product type	Upper housing part
Housing type	DIN rail housing
Housing series	ICS
Product family	ICS50-..100X..
Type	Upper part, with transparent hinged cover
Ventilation openings present	no

Data management status

Article revision	00
------------------	----

Dimensions

Dimensional drawing	
Width	50.1 mm
Height	101 mm
Depth	14.35 mm

PCB design

PCB thickness	1.4 mm ... 1.8 mm
---------------	-------------------

Material specifications

Color (Upper housing part)	black (RAL 9005)
Color (Housing cover)	transparent
Flammability rating according to UL 94	V0
CTI according to IEC 60112	600
Housing material	Polyamide
Surface characteristics	untreated

Environmental and real-life conditions

Vibration test

Specification	IEC 60068-2-6:2007-12
Frequency	10 - 150 - 10 Hz

ICS50-TL100X12-9005 - Upper housing part



1076882

<https://www.phoenixcontact.com/us/products/1076882>

Sweep speed	1 octave/min
Amplitude	0.15 mm (10 Hz ... 58.1 Hz)
Acceleration	2g (58.1 Hz ... 150 Hz)
Test duration per axis	2.5 h
Test directions	X-, Y- and Z-axis

Glow-wire test

Specification	IEC 60695-2-11:2014-02
Temperature	850 °C
Time of exposure	30 s

Thermal stability / ball thrust test

Specification	IEC 60695-10-2:2014-02
Temperature	125 °C
Test duration	1 h
Force	20 N

Mechanical strength / tumbling barrel

Specification	IEC 60068-2-31:2008-05
Height of fall	50 cm
Frequency	50

Shocks

Specification	IEC 60068-2-27:2008-02
Pulse shape	Semi-sinusoidal
Acceleration	15g
Shock duration	11 ms
Number of shocks per direction	3
Test directions	X-, Y- and Z-axis (pos. and neg.)

Test for substances that would hinder coating with paint or varnish

Specification	VDMA 24364:2018-05
Result	Test passed

Degree of protection (IP code)

Specification	IEC 60529:1989-11 + AMD 1:1999-11 + AMD 2:2013-08
Result, degree of protection, IP code	IP20

Protection against electric shock

Specification	IEC 60998-1:2002-12
Requirements, protection against electric shock	It must not be possible to touch any conductive part with the IEC test finger and a test force of 10 N.

Ambient conditions

Max. IP code to attain	IP20
Ambient temperature (operation)	-40 °C ... 105 °C (depending on power dissipation)
Ambient temperature (storage/transport)	-40 °C ... 55 °C
Ambient temperature (assembly)	-5 °C ... 100 °C

ICS50-TL100X12-9005 - Upper housing part



1076882

<https://www.phoenixcontact.com/us/products/1076882>

Relative humidity (storage/transport)	80 %
---------------------------------------	------

PCB data

Number of PCB holders	4
Type of PCB mount	Slot
Thickness of the PCB	1.4 mm ... 1.8 mm

Mounting

Mounting type	Snap in
---------------	---------

Packaging specifications

Type of packaging	packed in cardboard
Outer packaging type	Carton

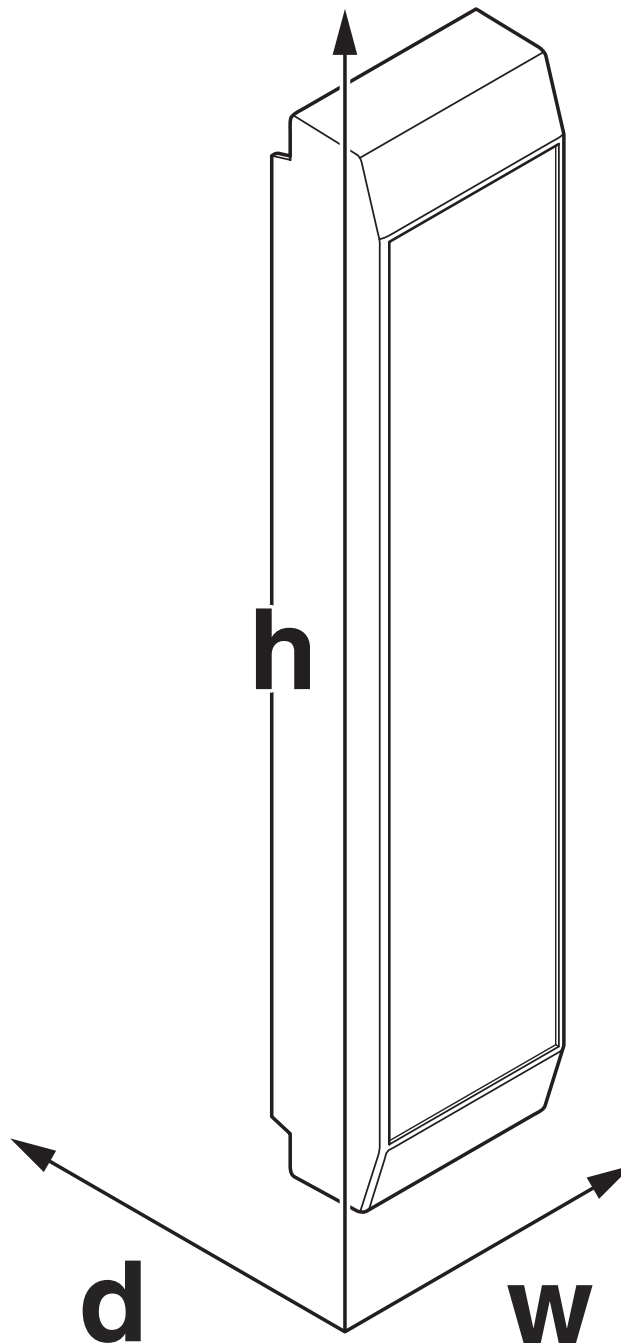
ICS50-TL100X12-9005 - Upper housing part

1076882

<https://www.phoenixcontact.com/us/products/1076882>

Drawings

Dimensional drawing



Schematic figure for illustrating the item dimensions. The figure is not of the desired product. For further details, refer to the product drawings in the "Downloads" tab.

ICS50-TL100X12-9005 - Upper housing part



1076882

<https://www.phoenixcontact.com/us/products/1076882>

Approvals

🔗 To download certificates, visit the product detail page: <https://www.phoenixcontact.com/us/products/1076882>



UL Recognized
Approval ID: E240868

ICS50-TL100X12-9005 - Upper housing part



1076882

<https://www.phoenixcontact.com/us/products/1076882>

Classifications

ECLASS

ECLASS-11.0	27182702
ECLASS-13.0	27190603

ETIM

ETIM 9.0	EC002779
----------	----------

UNSPSC

UNSPSC 21.0	31261500
-------------	----------

Environmental product compliance

EU RoHS	
Fulfills EU RoHS substance requirements	Yes, No exemptions
China RoHS	
Environment friendly use period (EFUP)	EFUP-E
	No hazardous substances above the limits
EU REACH SVHC	
REACH candidate substance (CAS No.)	No substance above 0.1 wt%

ICS50-TL100X12-9005 - Upper housing part



1076882

<https://www.phoenixcontact.com/us/products/1076882>

Mandatory accessories

ICS50-B100X98-V-V-9005 - Mounting base housing

1076893

<https://www.phoenixcontact.com/us/products/1076893>



DIN rail housing, Lower housing part with metal foot catch, Level 1: with vents, width: 50.1 mm, height: 100 mm, depth: 108.35 mm, color: black (similar RAL 9005), cross connection: DIN rail connector (optional), number of positions cross connector: 8

ICS50-B100X98-O-O-9005 - Mounting base housing

1118654

<https://www.phoenixcontact.com/us/products/1118654>



DIN rail housing, Lower housing part with metal foot catch, width: 50.1 mm, height: 100 mm, depth: 108.35 mm, color: black (similar RAL 9005), cross connection: DIN rail connector (optional), number of positions cross connector: 8

Accessories

ICS50-TL100X12-9005 - Upper housing part

1076882

<https://www.phoenixcontact.com/us/products/1076882>



ICS-FE-CONTACT - Functional ground contact

2203904

<https://www.phoenixcontact.com/us/products/2203904>

Functional ground contact, for ICS series electronics housings



ICC25-H/4L5,0-9005 - PCB header

1072486

<https://www.phoenixcontact.com/us/products/1072486>



PCB headers, nominal cross section: 2.5 mm², color: black, nominal current: 16 A, rated voltage (III/2): 320 V, contact surface: Sn, contact connection type: Pin, number of potentials: 4, number of rows: 1, number of positions: 4, number of connections: 4, product range: ICC...-H/...L5,0, pitch: 5 mm, mounting: Wave soldering, pin layout: Linear pinning, solder pin [P]: 3.5 mm, number of solder pins per potential: 1, Pin connector pattern alignment: Standard, locking: Snap-in locking, mounting: without, type of packaging: Box packaging, Product with pin output on left side

ICS50-TL100X12-9005 - Upper housing part



1076882

<https://www.phoenixcontact.com/us/products/1076882>

ICC25-H/4R5,0-9005 - PCB header

1072485

<https://www.phoenixcontact.com/us/products/1072485>



PCB headers, nominal cross section: 2.5 mm², color: black, nominal current: 16 A, rated voltage (III/2): 320 V, contact surface: Sn, contact connection type: Pin, number of potentials: 4, number of rows: 1, number of positions: 4, number of connections: 4, product range: ICC...-H/...R5,0, pitch: 5 mm, mounting: Wave soldering, pin layout: Linear pinning, solder pin [P]: 3.5 mm, number of solder pins per potential: 1, Pin connector pattern alignment: Standard, locking: Snap-in locking, mounting: without, type of packaging: Box packaging, Product with pin output on right side

ICC25-H/5L3,5-9005 - PCB header

1524091

<https://www.phoenixcontact.com/us/products/1524091>



PCB headers, color: black, nominal current: 8 A, rated voltage (III/2): 150 V, contact surface: Sn, contact connection type: Pin, number of potentials: 5, number of rows: 1, number of positions: 5, number of connections: 5, product range: ICC...-H/...L3,5, pitch: 3.5 mm, mounting: Wave soldering, pin layout: Linear pinning, solder pin [P]: 2.8 mm, number of solder pins per potential: 1, Pin connector pattern alignment: Standard, locking: Snap-in locking, mounting: without, type of packaging: Box packaging, Product with pin output on left side

ICS50-TL100X12-9005 - Upper housing part

1076882

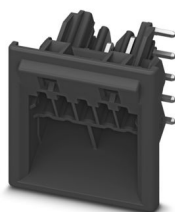
<https://www.phoenixcontact.com/us/products/1076882>



ICC25-H/5R3,5-9005 - PCB header

1524100

<https://www.phoenixcontact.com/us/products/1524100>

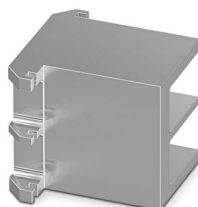


PCB headers, color: black, nominal current: 8 A, rated voltage (III/2): 150 V, contact surface: Sn, contact connection type: Pin, number of potentials: 5, number of rows: 1, number of positions: 5, number of connections: 5, product range: ICC...-H/...R3,5, pitch: 3.5 mm, mounting: Wave soldering, pin layout: Linear pinning, solder pin [P]: 2.8 mm, number of solder pins per potential: 1, Pin connector pattern alignment: Standard, locking: Snap-in locking, mounting: without, type of packaging: Box packaging, Product with pin output on right side

ICE25-F22H-A1 - Heatsink

1328704

<https://www.phoenixcontact.com/us/products/1328704>



Heatsink for housing series: ICS, type: Heatsink fillers, material: Aluminum, anodized, product range: ICS25, width: 22.4 mm, height: 25 mm, Individual milling possible.

ICS50-TL100X12-9005 - Upper housing part



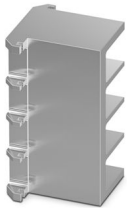
1076882

<https://www.phoenixcontact.com/us/products/1076882>

ICE25-F45H-A1 - Heatsink

1328703

<https://www.phoenixcontact.com/us/products/1328703>



Heatsink for housing series: ICS, type: Heatsink fillers, material: Aluminum, anodized, product range: ICS25, width: 44.9 mm, height: 25 mm, Individual milling possible.

ICE25-R100X22-A1 - Heatsink

1328715

<https://www.phoenixcontact.com/us/products/1328715>



Heatsink for housing series: ICS, material: Aluminum, anodized, product range: ICS25-..100X.., width: 22.4 mm, height: 25 mm, Individual milling possible.

ICS50-TL100X12-9005 - Upper housing part



1076882

<https://www.phoenixcontact.com/us/products/1076882>

ICE25-R100X45-A1 - Heatsink

1328714

<https://www.phoenixcontact.com/us/products/1328714>

Heatsink for housing series: ICS, material: Aluminum, anodized, product range: ICS25-..100X.., width: 44.9 mm, height: 25 mm, Individual milling possible.



ICE50-R100X22-A1 - Heatsink

1328713

<https://www.phoenixcontact.com/us/products/1328713>

Heatsink for housing series: ICS, material: Aluminum, anodized, product range: ICS50-..100X.., width: 22.4 mm, height: 50.1 mm, Individual milling possible.



ICS50-TL100X12-9005 - Upper housing part



1076882

<https://www.phoenixcontact.com/us/products/1076882>

ICE50-R100X45-A1 - Heatsink

1328712

<https://www.phoenixcontact.com/us/products/1328712>

Heatsink for housing series: ICS, material: Aluminum, anodized, product range: ICS50-..100X.., width: 44.9 mm, height: 50.1 mm, Individual milling possible.



ICE50-R100X67-A1 - Heatsink

1118306

<https://www.phoenixcontact.com/us/products/1118306>

Heatsink for housing series: ICS, material: Aluminum, anodized, product range: ICS50-..100X.., width: 67.4 mm, height: 50.1 mm, Individual milling possible.



ICS50-TL100X12-9005 - Upper housing part



1076882

<https://www.phoenixcontact.com/us/products/1076882>

ICS25-F22A-9005 - Connection plate

1072502

<https://www.phoenixcontact.com/us/products/1072502>

DIN rail housing, ICS filler, with antenna function cutout, width: 25 mm, height: 7.25 mm, depth: 22.4 mm, color: black (similar RAL 9005)

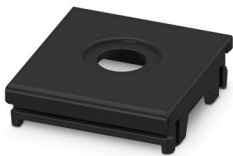


ICS25-F22A6-9005 - Connection plate

1287367

<https://www.phoenixcontact.com/us/products/1287367>

DIN rail housing, ICS filler, with antenna function cutout, width: 25 mm, height: 7.25 mm, depth: 22.4 mm, color: black (similar RAL 9005)



ICS50-TL100X12-9005 - Upper housing part



1076882

<https://www.phoenixcontact.com/us/products/1076882>

ICS25-F22J-9005 - Connection plate

1072501

<https://www.phoenixcontact.com/us/products/1072501>

DIN rail housing, ICS filler, with RJ45 function cutout, width: 25 mm, height: 7.25 mm, depth: 22.4 mm, color: black (similar RAL 9005)



ICS25-F22S-9005 - Connection plate

1072520

<https://www.phoenixcontact.com/us/products/1072520>

DIN rail housing, ICS filler, closed, width: 25 mm, height: 7.25 mm, depth: 22.4 mm, color: black (similar RAL 9005)



ICS50-TL100X12-9005 - Upper housing part

1076882

<https://www.phoenixcontact.com/us/products/1076882>



ICS25-F22U-9005 - Connection plate

1072494

<https://www.phoenixcontact.com/us/products/1072494>

DIN rail housing, ICS filler, with USB function cutout, width: 25 mm, height: 7.25 mm, depth: 22.4 mm, color: black (similar RAL 9005)



ICS25-F22V-9005 - Connection plate

1104313

<https://www.phoenixcontact.com/us/products/1104313>

DIN rail housing, ICS filler, with vents, width: 25 mm, height: 7.25 mm, depth: 22.4 mm, color: black (similar RAL 9005)



ICS50-TL100X12-9005 - Upper housing part



1076882

<https://www.phoenixcontact.com/us/products/1076882>

ICS25-F45D15-9005 - Connection plate

1072495

<https://www.phoenixcontact.com/us/products/1072495>

DIN rail housing, ICS filler, with D-SUB 15 function cutout, width: 25 mm, height: 7.25 mm, depth: 44.9 mm, color: black (similar RAL 9005)

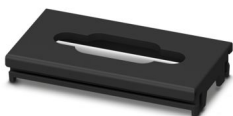


ICS25-F45D9-9005 - Connection plate

1072500

<https://www.phoenixcontact.com/us/products/1072500>

DIN rail housing, ICS filler, with D-SUB 9 function cutout, width: 25 mm, height: 7.25 mm, depth: 44.9 mm, color: black (similar RAL 9005)



ICS50-TL100X12-9005 - Upper housing part

1076882

<https://www.phoenixcontact.com/us/products/1076882>



ICS25-F45S-9005 - Connection plate

1072519

<https://www.phoenixcontact.com/us/products/1072519>

DIN rail housing, ICS filler, closed, width: 25 mm, height: 7.25 mm, depth: 44.9 mm, color: black (similar RAL 9005)



ICS25-F45V-9005 - Connection plate

1104312

<https://www.phoenixcontact.com/us/products/1104312>

DIN rail housing, ICS filler, with vents, width: 25 mm, height: 7.25 mm, depth: 44.9 mm, color: black (similar RAL 9005)



ICS50-TL100X12-9005 - Upper housing part

1076882

<https://www.phoenixcontact.com/us/products/1076882>



ICS25-F67V-9005 - Connection plate

1287407

<https://www.phoenixcontact.com/us/products/1287407>

DIN rail housing, ICS filler, with vents, width: 25 mm, height: 7.25 mm, depth: 67.3 mm, color: black (similar RAL 9005)



ICS25-F67S-9005 - Connection plate

1287431

<https://www.phoenixcontact.com/us/products/1287431>

DIN rail housing, ICS filler, closed, width: 25 mm, height: 7.25 mm, depth: 67.3 mm, color: black (similar RAL 9005)



ICS50-TL100X12-9005 - Upper housing part

1076882

<https://www.phoenixcontact.com/us/products/1076882>



ICS25-F90S-9005 - Connection plate

1287415

<https://www.phoenixcontact.com/us/products/1287415>

DIN rail housing, ICS filler, closed, width: 25 mm, height: 7.25 mm, depth: 89.8 mm, color: black (similar RAL 9005)



ICS25-F90V-9005 - Connection plate

1287403

<https://www.phoenixcontact.com/us/products/1287403>

DIN rail housing, ICS filler, with vents, width: 25 mm, height: 7.25 mm, depth: 89.8 mm, color: black (similar RAL 9005)



ICS50-TL100X12-9005 - Upper housing part

1076882

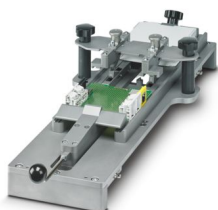
<https://www.phoenixcontact.com/us/products/1076882>



ICS MOUNTING DEVICE - Assembly tool

1118354

<https://www.phoenixcontact.com/us/products/1118354>



Equipment for fast, serial-production attachment of printed circuit boards in ICS 20 and ICS 25 housings

TBUS8-25,0-PPPPPPPP-9005 - DIN rail bus connectors

1072478

<https://www.phoenixcontact.com/us/products/1072478>



DIN rail connector, color: black, nominal current: 6 A (parallel contacts), rated voltage (III/2): 32 V, number of positions: 8, product range: TBUS8-25..., pitch: 2.54 mm, mounting: DIN rail mounting, locking: without, mounting: without, type of packaging: packed in cardboard, Item with gold-plated contacts, bus connectors for connecting with electronics housings, 8 parallel contacts

ICS50-TL100X12-9005 - Upper housing part

1076882

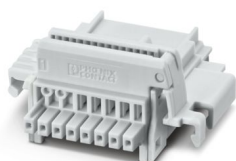
<https://www.phoenixcontact.com/us/products/1076882>



TBUS8-25,0-PPPPPPPS-7035 - DIN rail bus connectors

2202890

<https://www.phoenixcontact.com/us/products/2202890>

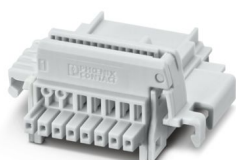


DIN rail connector, color: light gray, nominal current: 6 A, 4 A (parallel contacts) (Serial contacts), rated voltage (III/2): 32 V, number of positions: 8, product range: TBUS8-25..., pitch: 2.54 mm, mounting: DIN rail mounting, locking: without, mounting: without, type of packaging: packed in cardboard, Item with gold-plated contacts, bus connectors for connecting with electronics housings, 7 parallel contacts/1 serial contact

TBUS8-25,0-PPPPPPSS-7035 - DIN rail bus connectors

2202895

<https://www.phoenixcontact.com/us/products/2202895>



DIN rail connector, color: light gray, nominal current: 6 A, 4 A (parallel contacts) (Serial contacts), rated voltage (III/2): 32 V, number of positions: 8, product range: TBUS8-25..., pitch: 2.54 mm, mounting: DIN rail mounting, locking: without, mounting: without, type of packaging: packed in cardboard, Item with gold-plated contacts, bus connectors for connecting with electronics housings, 6 parallel contacts/2 serial contacts

ICS50-TL100X12-9005 - Upper housing part

1076882

<https://www.phoenixcontact.com/us/products/1076882>



TBUS8-25,0-PPPPSSSS-9005 - DIN rail bus connectors

1174596

<https://www.phoenixcontact.com/us/products/1174596>



DIN rail connector, color: black, nominal current: 6 A, 4 A (parallel contacts) (Serial contacts), rated voltage (III/2): 32 V, number of positions: 8, product range: TBUS8-25..., pitch: 2.54 mm, mounting: DIN rail mounting, locking: without, mounting: without, type of packaging: packed in cardboard, Item with gold-plated contacts, bus connectors for connecting with electronics housings, 4 parallel contacts/4 serial contacts

Phoenix Contact 2024 © - all rights reserved

<https://www.phoenixcontact.com>

Phoenix Contact USA
586 Fulling Mill Road
Middletown, PA 17057, United States
(+717) 944-1300
info@phoenixcon.com