

1079167
<https://www.phoenixcontact.com/us/products/1079167>

Please be informed that the data shown in this PDF document is generated from our online catalog. Please find the complete data in the user documentation. Our general terms of use for downloads are valid.



Feed-through terminal block, nom. voltage: 500 V, nominal current: 32 A, number of connections: 3, connection method: Screw connection, Rated cross section: 4 mm², cross section: 0.14 mm² - 6 mm², mounting type: NS 35/7,5, NS 35/15, color: black

Your advantages

- The consistent double function shaft offers every opportunity for time-saving potential distribution and accommodating test accessories
- User-friendly implementation of all potential branching tasks
- Tested for railway applications

Commercial data

| | |
|--------------------------------------|---------------|
| Item number | 1079167 |
| Packing unit | 50 pc |
| Minimum order quantity | 1 pc |
| Sales key | BE01 |
| Product key | BE1112 |
| GTIN | 4055626796796 |
| Weight per piece (including packing) | 13.614 g |
| Weight per piece (excluding packing) | 13.614 g |
| Customs tariff number | 85369010 |
| Country of origin | DE |

UT 4-TWIN BK - Feed-through terminal block



1079167

<https://www.phoenixcontact.com/us/products/1079167>

Technical data

Product properties

| | |
|-----------------------|--------------------------------|
| Product type | Multi-conductor terminal block |
| Area of application | Railway industry |
| | Machine building |
| | Plant engineering |
| | Process industry |
| Number of connections | 3 |
| Number of rows | 1 |
| Potentials | 1 |

Data management status

| | |
|------------------|----|
| Article revision | 07 |
|------------------|----|

Insulation characteristics

| | |
|----------------------|-----|
| Overvoltage category | III |
| Degree of pollution | 3 |

Electrical properties

| | |
|---|--------|
| Rated surge voltage | 6 kV |
| Maximum power dissipation for nominal condition | 1.02 W |

Connection data

| | |
|---|---|
| Number of connections per level | 3 |
| Nominal cross section | 4 mm ² |
| Screw thread | M3 |
| Tightening torque | 0.6 ... 0.8 Nm |
| Stripping length | 9 mm |
| Internal cylindrical gage | A4 |
| Connection in acc. with standard | IEC 60947-7-1 |
| Conductor cross section rigid | 0.14 mm ² ... 6 mm ² |
| Cross section AWG | 26 ... 10 (converted acc. to IEC) |
| Conductor cross section flexible | 0.14 mm ² ... 6 mm ² |
| Conductor cross section, flexible [AWG] | 26 ... 10 (converted acc. to IEC) |
| Conductor cross-section flexible (ferrule without plastic sleeve) | 0.25 mm ² ... 4 mm ² |
| Flexible conductor cross section (ferrule with plastic sleeve) | 0.25 mm ² ... 4 mm ² |
| 2 conductors with same cross section, solid | 0.14 mm ² ... 1.5 mm ² |
| 2 conductors with same cross section, flexible | 0.14 mm ² ... 1.5 mm ² |
| 2 conductors with same cross section, flexible, with ferrule without plastic sleeve | 0.25 mm ² ... 1.5 mm ² |
| 2 conductors with the same cross section, flexible, with TWIN ferrule with plastic sleeve | 0.5 mm ² ... 1 mm ² |
| Nominal current | 32 A |
| Maximum load current | 41 A (In the case of a 6 mm ² conductor cross section, the |

UT 4-TWIN BK - Feed-through terminal block



1079167

<https://www.phoenixcontact.com/us/products/1079167>

| | |
|-----------------------|---|
| | maximum load current must not be exceeded by the total current of all connected conductors) |
| Nominal voltage | 500 V |
| Nominal cross section | 4 mm ² |

Ex data

Rated data (ATEX/IECEX)

| | |
|--|-------------------------------------|
| Identification | Ex II 2 GD Ex eb IIC Gb |
| Operating temperature range | -60 °C ... 110 °C |
| Ex-certified accessories | 3047141 D-UT 2,5/4-TWIN |
| | 3047109 DS-UT 2,5/4 |
| | 3047183 ATP-UT-TWIN |
| | 1212587 SF-SL 0,6X3,5-100 S-VDE |
| | 3022276 CLIPFIX 35-5 |
| | 3022218 CLIPFIX 35 |
| List of bridges | Plug-in bridge / FBS 2-6 / 3030336 |
| | Plug-in bridge / FBS 3-6 / 3030242 |
| | Plug-in bridge / FBS 4-6 / 3030255 |
| | Plug-in bridge / FBS 5-6 / 3030349 |
| | Plug-in bridge / FBS 10-6 / 3030271 |
| | Plug-in bridge / FBS 20-6 / 3030365 |
| Bridge data | 27 A / 4 mm ² |
| Ex temperature increase | 40 K (32.5 A / 4 mm ²) |
| Rated voltage | 352 V |
| for bridging with bridge | 352 V |
| - At bridging between non-adjacent terminal blocks | 352 V |
| - At bridging between non-adjacent terminal blocks via PE terminal block | 275 V |
| - At cut-to-length bridging with cover | 220 V |
| - At cut-to-length bridging with partition plate | 275 V |
| Rated insulation voltage | 320 V |
| output | (Permanent) |

Ex level General

| | |
|----------------------|---------|
| Rated current | 29 A |
| Maximum load current | 35 A |
| Contact resistance | 0.44 mΩ |

Ex connection data General

| | |
|------------------------------|--|
| Torque range | 0.6 Nm ... 0.8 Nm |
| Nominal cross section | 4 mm ² |
| Rated cross section AWG | 12 |
| Connection capacity rigid | 0.14 mm ² ... 6 mm ² |
| Connection capacity AWG | 26 ... 10 |
| Connection capacity flexible | 0.14 mm ² ... 4 mm ² |

UT 4-TWIN BK - Feed-through terminal block



1079167

<https://www.phoenixcontact.com/us/products/1079167>

| | |
|---|--|
| Connection capacity AWG | 26 ... 12 |
| 2 conductors with same cross section, solid | 0.14 mm ² ... 1.5 mm ² |
| 2 conductors with the same cross-section AWG rigid | 26 ... 16 |
| 2 conductors with same cross section, stranded | 0.14 mm ² ... 1.5 mm ² |
| 2 conductors with the same cross-section AWG flexible | 26 ... 16 |

Dimensions

| | |
|--------------------|---------|
| Width | 6.2 mm |
| End cover width | 2.2 mm |
| Height | 57.8 mm |
| Depth | 46.9 mm |
| Depth on NS 35/7,5 | 47.5 mm |
| Depth on NS 35/15 | 55 mm |

Material specifications

| | |
|--|-------------|
| Color | black |
| Flammability rating according to UL 94 | V0 |
| Insulating material group | I |
| Insulating material | PA |
| Static insulating material application in cold | -60 °C |
| Relative insulation material temperature index (Elec., UL 746 B) | 130 °C |
| Fire protection for rail vehicles (DIN EN 45545-2) R22 | HL 1 - HL 3 |
| Fire protection for rail vehicles (DIN EN 45545-2) R23 | HL 1 - HL 3 |
| Fire protection for rail vehicles (DIN EN 45545-2) R24 | HL 1 - HL 3 |
| Fire protection for rail vehicles (DIN EN 45545-2) R26 | HL 1 - HL 3 |
| Surface flammability NFPA 130 (ASTM E 162) | passed |
| Specific optical density of smoke NFPA 130 (ASTM E 662) | passed |
| Smoke gas toxicity NFPA 130 (SMP 800C) | passed |

Electrical tests

Surge voltage test

| | |
|-----------------------|-------------|
| Test voltage setpoint | 7.3 kV |
| Result | Test passed |

Temperature-rise test

| | |
|--|--------------------------------|
| Requirement temperature-rise test | Increase in temperature ≤ 45 K |
| Result | Test passed |
| Short-time withstand current 4 mm ² | 0.48 kA |
| Short-time withstand current 6 mm ² | 0.72 kA |
| Result | Test passed |

Power-frequency withstand voltage

| | |
|-----------------------|-------------|
| Test voltage setpoint | 1.89 kV |
| Result | Test passed |

UT 4-TWIN BK - Feed-through terminal block



1079167

<https://www.phoenixcontact.com/us/products/1079167>

Mechanical properties

Mechanical data

| | |
|-----------------|-----|
| Open side panel | Yes |
|-----------------|-----|

Mechanical tests

Mechanical strength

| | |
|--------|-------------|
| Result | Test passed |
|--------|-------------|

Attachment on the carrier

| | |
|-------------------------|-------------|
| DIN rail/fixing support | NS 35 |
| Test force setpoint | 1 N |
| Result | Test passed |

Test for conductor damage and slackening

| | |
|--------------------------------|-------------------------------|
| Rotation speed | 10 rpm |
| Revolutions | 135 |
| Conductor cross section/weight | 0.14 mm ² / 0.2 kg |
| | 4 mm ² / 0.9 kg |
| | 6 mm ² / 1.4 kg |
| Result | Test passed |

Environmental and real-life conditions

Needle-flame test

| | |
|------------------|-------------|
| Time of exposure | 30 s |
| Result | Test passed |

Oscillation/broadband noise

| | |
|------------------------|---|
| Specification | DIN EN 50155 (VDE 0115-200):2008-03 |
| Spectrum | Service life test category 1, class B, body mounted |
| Frequency | $f_1 = 5 \text{ Hz}$ to $f_2 = 150 \text{ Hz}$ |
| ASD level | 1.857 (m/s ²)/Hz |
| Acceleration | 0.8g |
| Test duration per axis | 5 h |
| Test directions | X-, Y- and Z-axis |
| Result | Test passed |

Shocks

| | |
|--------------------------------|-------------------------------------|
| Specification | DIN EN 50155 (VDE 0115-200):2008-03 |
| Pulse shape | Half-sine |
| Acceleration | 5g |
| Shock duration | 30 ms |
| Number of shocks per direction | 3 |
| Test directions | X-, Y- and Z-axis (pos. and neg.) |
| Result | Test passed |

UT 4-TWIN BK - Feed-through terminal block



1079167

<https://www.phoenixcontact.com/us/products/1079167>

Ambient conditions

| | |
|--|--|
| Ambient temperature (operation) | -60 °C ... 110 °C (Operating temperature range incl. self-heating; for max. short-term operating temperature, see RTI Elec.) |
| Ambient temperature (storage/transport) | -25 °C ... 60 °C (for a short time, no longer than 24 h, -60°C to +70°C) |
| Ambient temperature (assembly) | -5 °C ... 70 °C |
| Ambient temperature (actuation) | -5 °C ... 70 °C |
| Permissible humidity (operation) | 20 % ... 90 % |
| Permissible humidity (storage/transport) | 30 % ... 70 % |

Standards and regulations

| | |
|----------------------------------|---------------|
| Connection in acc. with standard | IEC 60947-7-1 |
|----------------------------------|---------------|

Mounting

| | |
|---------------|-----------|
| Mounting type | NS 35/7,5 |
| | NS 35/15 |

UT 4-TWIN BK - Feed-through terminal block



1079167

<https://www.phoenixcontact.com/us/products/1079167>

Drawings

Circuit diagram



UT 4-TWIN BK - Feed-through terminal block



1079167

<https://www.phoenixcontact.com/us/products/1079167>

Approvals

To download certificates, visit the product detail page: <https://www.phoenixcontact.com/us/products/1079167>

DNV

Approval ID: TAE00001S9



CSA

Approval ID: 13631

| | Nominal voltage U_N | Nominal current I_N | Cross section AWG | Cross section mm^2 |
|-------------|-----------------------|-----------------------|-------------------|-----------------------------|
| Use group B | | | | |
| | 150 V | 30 A | 26 - 10 | - |
| Use group C | | | | |
| | 150 V | 30 A | 26 - 10 | - |



IECEE CB Scheme

Approval ID: DE1-62912

| | Nominal voltage U_N | Nominal current I_N | Cross section AWG | Cross section mm^2 |
|--|-----------------------|-----------------------|-------------------|-----------------------------|
| | 500 V | - | - | - |



cULus Recognized

Approval ID: E60425

| | Nominal voltage U_N | Nominal current I_N | Cross section AWG | Cross section mm^2 |
|-------------|-----------------------|-----------------------|-------------------|-----------------------------|
| Use group B | | | | |
| | 300 V | 30 A | 26 - 10 | - |
| Use group C | | | | |
| | 300 V | 30 A | 26 - 10 | - |



VDE Zeichengenehmigung

Approval ID: 40040772

| | Nominal voltage U_N | Nominal current I_N | Cross section AWG | Cross section mm^2 |
|--|-----------------------|-----------------------|-------------------|-----------------------------|
| | 500 V | 32 A | - | 0.14 - 6 |



ATEX

Approval ID: KEMA06ATEX0017U



cUL Recognized

Approval ID: E192998

| | Nominal voltage U_N | Nominal current I_N | Cross section AWG | Cross section mm^2 |
|-------------|-----------------------|-----------------------|-------------------|-----------------------------|
| Use group B | | | | |


UT 4-TWIN BK - Feed-through terminal block




1079167

<https://www.phoenixcontact.com/us/products/1079167>


| | | | | |
|-------------|-------|------|---------|---|
| | 150 V | 30 A | 26 - 10 | - |
| Use group C | | | | |
| | 150 V | 30 A | 26 - 10 | - |




EAC Ex
Approval ID: RU C-DE.HA91.B.00066




IECEX
Approval ID: IECEX KEM 06.0013U

| | | | | |
|---|--|-----------------------|-------------------|-----------------------------|
|  | UL Recognized Approval ID: E192998 | | | |
| | Nominal voltage U_N | Nominal current I_N | Cross section AWG | Cross section mm^2 |
| Use group B | | | | |
| | 150 V | 30 A | 26 - 10 | - |
| Use group C | | | | |
| | 150 V | 30 A | 26 - 10 | - |



CCC
Approval ID: 2020322313000622



UKCA-EX
Approval ID: DEKRA 21UKEX0305U

cULus Recognized

UT 4-TWIN BK - Feed-through terminal block



1079167

<https://www.phoenixcontact.com/us/products/1079167>

Classifications

ECLASS

| | |
|-------------|----------|
| ECLASS-11.0 | 27141120 |
| ECLASS-13.0 | 27250101 |

ETIM

| | |
|----------|----------|
| ETIM 9.0 | EC000897 |
|----------|----------|

UNSPSC

| | |
|-------------|----------|
| UNSPSC 21.0 | 39121400 |
|-------------|----------|

Environmental product compliance

| | |
|---|---|
| EU RoHS | |
| Fulfills EU RoHS substance requirements | Yes |
| Exemption | 6(c) |
| China RoHS | |
| Environment friendly use period (EFUP) | EFUP-50 |
| | An article-related China RoHS declaration table can be found in the download area for the respective article under "Manufacturer declaration". For all articles with EFUP-E, no China RoHS declaration table issued and required. |
| EU REACH SVHC | |
| REACH candidate substance (CAS No.) | Lead(CAS: 7439-92-1) |
| SCIP | 8c5d747d-5673-4f32-b4b8-0a52073aaa7a |

UT 4-TWIN BK - Feed-through terminal block



1079167

<https://www.phoenixcontact.com/us/products/1079167>

Accessories

i Note: Applying some accessories below might limit this product.

FBS 2-6 - Plug-in bridge

3030336

<https://www.phoenixcontact.com/us/products/3030336>



Plug-in bridge, pitch: 6.2 mm, number of positions: 2, color: red

i Max. current carrying capacity: 32 A

FBS 3-6 - Plug-in bridge

3030242

<https://www.phoenixcontact.com/us/products/3030242>



Plug-in bridge, pitch: 6.2 mm, number of positions: 3, color: red

i Max. current carrying capacity: 32 A

UT 4-TWIN BK - Feed-through terminal block



1079167

<https://www.phoenixcontact.com/us/products/1079167>

FBS 4-6 - Plug-in bridge

3030255

<https://www.phoenixcontact.com/us/products/3030255>



Plug-in bridge, pitch: 6.2 mm, number of positions: 4, color: red

 Max. current carrying capacity: 32 A

FBS 5-6 - Plug-in bridge

3030349

<https://www.phoenixcontact.com/us/products/3030349>



Plug-in bridge, pitch: 6.2 mm, number of positions: 5, color: red

 Max. current carrying capacity: 32 A

UT 4-TWIN BK - Feed-through terminal block



1079167

<https://www.phoenixcontact.com/us/products/1079167>

FBS 6-6 - Plug-in bridge

1008238

<https://www.phoenixcontact.com/us/products/1008238>



Plug-in bridge, One side not fully isolated, pitch: 6.2 mm, number of positions: 6, color: red

 Max. current carrying capacity: 32 A

FBS 10-6 - Plug-in bridge

3030271

<https://www.phoenixcontact.com/us/products/3030271>



Plug-in bridge, pitch: 6.2 mm, number of positions: 10, color: red

 Max. current carrying capacity: 32 A

UT 4-TWIN BK - Feed-through terminal block

1079167

<https://www.phoenixcontact.com/us/products/1079167>




FBS 20-6 - Plug-in bridge

3030365

<https://www.phoenixcontact.com/us/products/3030365>



Plug-in bridge, pitch: 6.2 mm, number of positions: 20, color: red

 Max. current carrying capacity: 32 A


FBS 50-6 - Plug-in bridge

3032224

<https://www.phoenixcontact.com/us/products/3032224>



Plug-in bridge, pitch: 6.2 mm, number of positions: 50, color: red

 Max. current carrying capacity: 32 A

UT 4-TWIN BK - Feed-through terminal block



1079167

<https://www.phoenixcontact.com/us/products/1079167>

FBSR 2-6 - Plug-in bridge

3033715

<https://www.phoenixcontact.com/us/products/3033715>



Plug-in bridge, pitch: 6.2 mm, number of positions: 2, color: red

 Max. current carrying capacity: 24 A

FBSR 3-6 - Plug-in bridge

3001594

<https://www.phoenixcontact.com/us/products/3001594>



Plug-in bridge, pitch: 6.2 mm, number of positions: 3, color: red

 Max. current carrying capacity: 24 A

UT 4-TWIN BK - Feed-through terminal block



1079167

<https://www.phoenixcontact.com/us/products/1079167>

FBSR 4-6 - Plug-in bridge

3001595

<https://www.phoenixcontact.com/us/products/3001595>



Plug-in bridge, pitch: 6.2 mm, number of positions: 4, color: red

 Max. current carrying capacity: 24 A

FBSR 5-6 - Plug-in bridge

3001596

<https://www.phoenixcontact.com/us/products/3001596>



Plug-in bridge, pitch: 6.2 mm, number of positions: 5, color: red

 Max. current carrying capacity: 24 A

UT 4-TWIN BK - Feed-through terminal block



1079167

<https://www.phoenixcontact.com/us/products/1079167>

FBSR 10-6 - Plug-in bridge

3033716

<https://www.phoenixcontact.com/us/products/3033716>



Plug-in bridge, pitch: 6.2 mm, number of positions: 10, color: red

 Max. current carrying capacity: 24 A

FBSRH 2-6 - Short-circuit connector

3033812

<https://www.phoenixcontact.com/us/products/3033812>



Short-circuit connector, pitch: 6.2 mm, number of positions: 2, color: red

 Max. current carrying capacity: 24 A

UT 4-TWIN BK - Feed-through terminal block

1079167

<https://www.phoenixcontact.com/us/products/1079167>



FBS 2-6 BU - Plug-in bridge

3036932

<https://www.phoenixcontact.com/us/products/3036932>



Plug-in bridge, pitch: 6.2 mm, number of positions: 2, color: blue

 Max. current carrying capacity: 32 A

FBS 3-6 BU - Plug-in bridge

3036945

<https://www.phoenixcontact.com/us/products/3036945>



Plug-in bridge, pitch: 6.2 mm, number of positions: 3, color: blue

 Max. current carrying capacity: 32 A

UT 4-TWIN BK - Feed-through terminal block

1079167

<https://www.phoenixcontact.com/us/products/1079167>



FBS 4-6 BU - Plug-in bridge

3036958

<https://www.phoenixcontact.com/us/products/3036958>



Plug-in bridge, pitch: 6.2 mm, number of positions: 4, color: blue

 Max. current carrying capacity: 32 A

FBS 5-6 BU - Plug-in bridge

3036961

<https://www.phoenixcontact.com/us/products/3036961>



Plug-in bridge, pitch: 6.2 mm, number of positions: 5, color: blue

 Max. current carrying capacity: 32 A

UT 4-TWIN BK - Feed-through terminal block

1079167

<https://www.phoenixcontact.com/us/products/1079167>



FBS 10-6 BU - Plug-in bridge

3032198

<https://www.phoenixcontact.com/us/products/3032198>

Plug-in bridge, pitch: 6.2 mm, number of positions: 10, color: blue



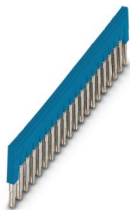
 Max. current carrying capacity: 32 A

FBS 20-6 BU - Plug-in bridge

3032208

<https://www.phoenixcontact.com/us/products/3032208>

Plug-in bridge, pitch: 6.2 mm, number of positions: 20, color: blue



 Max. current carrying capacity: 32 A

UT 4-TWIN BK - Feed-through terminal block

1079167

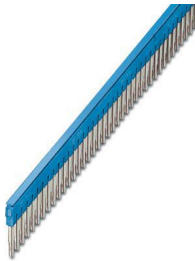
<https://www.phoenixcontact.com/us/products/1079167>



FBS 50-6 BU - Plug-in bridge

3032211

<https://www.phoenixcontact.com/us/products/3032211>



Plug-in bridge, pitch: 6.2 mm, number of positions: 50, color: blue

 Max. current carrying capacity: 32 A

RB ST 10-(2,5/4) - Reducing bridge

3030873

<https://www.phoenixcontact.com/us/products/3030873>



Reducing bridge, pitch: 10 mm, number of positions: 2, length: 36 mm, color: red

 Max. current carrying capacity: 35 A

UT 4-TWIN BK - Feed-through terminal block



1079167

<https://www.phoenixcontact.com/us/products/1079167>


RB UT 10-(2,5/4) - Reducing bridge

3047060

<https://www.phoenixcontact.com/us/products/3047060>



Reducing bridge, pitch: 10.2 mm, number of positions: 2, length: 29 mm, color: red

 Max. current carrying capacity: 40 A


RB UT 35-(2,5/4) - Reducing bridge

3047277

<https://www.phoenixcontact.com/us/products/3047277>



Reducing bridge, pitch: 11 mm, number of positions: 2, color: red

 Max. current carrying capacity: 40 A

UT 4-TWIN BK - Feed-through terminal block



1079167

<https://www.phoenixcontact.com/us/products/1079167>


RB UT 16-(2,5/4) - Reducing bridge

3047073

<https://www.phoenixcontact.com/us/products/3047073>



Reducing bridge, pitch: 11 mm, number of positions: 2, length: 31 mm, color: red

 Max. current carrying capacity: 40 A


RB UT 6-(2,5/4) - Reducing bridge

3047251

<https://www.phoenixcontact.com/us/products/3047251>



Reducing bridge, pitch: 9.5 mm, number of positions: 2, length: 25 mm, color: red

 Max. current carrying capacity: 40 A

UT 4-TWIN BK - Feed-through terminal block



1079167

<https://www.phoenixcontact.com/us/products/1079167>

DS-UT 2,5/4 - Cover segment

3047109

<https://www.phoenixcontact.com/us/products/3047109>

Cover segment, color: gray



D-UT 2,5/4-TWIN - End cover

3047141

<https://www.phoenixcontact.com/us/products/3047141>

End cover, depth: 39.8 mm, width: 2.2 mm, height: 56.8 mm, color: gray



UT 4-TWIN BK - Feed-through terminal block

1079167

<https://www.phoenixcontact.com/us/products/1079167>



ATP-UT-TWIN - Partition plate

3047183

<https://www.phoenixcontact.com/us/products/3047183>



Partition plate, depth: 52.5 mm, width: 2.2 mm, height: 62.1 mm, color: gray

PS-6/2,3MM RD - Test plug

3038736

<https://www.phoenixcontact.com/us/products/3038736>



Test plug, number of positions: 1, color: red

UT 4-TWIN BK - Feed-through terminal block

1079167

<https://www.phoenixcontact.com/us/products/1079167>

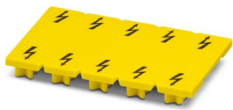


WS UT 4 - Warning label

3047332

<https://www.phoenixcontact.com/us/products/3047332>

Warning sign for UT terminal blocks



LPS-6/E - Service connector

3270540

<https://www.phoenixcontact.com/us/products/3270540>



Service connector, nom. voltage: 800 V, nominal current: 24 A, number of positions: 1, connection method: Push-in connection, Rated cross section: 2.5 mm², cross section: 0.14 mm²- 4 mm², color: red

UT 4-TWIN BK - Feed-through terminal block



1079167

<https://www.phoenixcontact.com/us/products/1079167>

LPS-6 - Service connector

3270541

<https://www.phoenixcontact.com/us/products/3270541>



Service connector, nom. voltage: 800 V, nominal current: 24 A, number of positions: 1, connection method: Push-in connection, Rated cross section: 2.5 mm², cross section: 0.14 mm²- 4 mm², color: red

LPO 4/E - Pick-off plug

3270519

<https://www.phoenixcontact.com/us/products/3270519>



Pick-off plug, nom. voltage: 800 V, nominal current: 24 A, number of positions: 1, connection method: Push-in connection, Rated cross section: 2.5 mm², cross section: 0.14 mm²- 4 mm², color: gray

UT 4-TWIN BK - Feed-through terminal block

1079167

<https://www.phoenixcontact.com/us/products/1079167>



LPO 4 - Pick-off plug

3270522

<https://www.phoenixcontact.com/us/products/3270522>



Pick-off plug, nom. voltage: 800 V, nominal current: 24 A, number of positions: 1, connection method: Push-in connection, Rated cross section: 2.5 mm², cross section: 0.14 mm²- 4 mm², color: gray

NS 35/ 7,5 PERF 2000MM - DIN rail perforated

0801733

<https://www.phoenixcontact.com/us/products/0801733>



DIN rail perforated, Pack of 25 (50 m), acc. to EN 60715, material: Steel, galvanized, passivated with a thick layer, Standard profile, color: silver

UT 4-TWIN BK - Feed-through terminal block

1079167

<https://www.phoenixcontact.com/us/products/1079167>



NS 35/ 7,5 UNPERF 2000MM - DIN rail, unperforated

0801681

<https://www.phoenixcontact.com/us/products/0801681>



DIN rail, unperforated, Pack of 25 (50 m), acc. to EN 60715, material: Steel, galvanized, passivated with a thick layer, Standard profile, color: silver

NS 35/ 7,5 WH PERF 2000MM - DIN rail perforated

1204119

<https://www.phoenixcontact.com/us/products/1204119>



DIN rail perforated, Pack of 25 (50 m), acc. to EN 60715, material: Steel, Galvanized, white passivated, Standard profile, color: silver

UT 4-TWIN BK - Feed-through terminal block

1079167

<https://www.phoenixcontact.com/us/products/1079167>



NS 35/ 7,5 WH UNPERF 2000MM-VPE 10 - DIN rail, unperforated

1204122

<https://www.phoenixcontact.com/us/products/1204122>



DIN rail, unperforated, Pack of 10 (20 m), acc. to EN 60715, material: Steel, Galvanized, white passivated, Standard profile, color: silver

NS 35/ 7,5 AL UNPERF 2000MM - DIN rail, unperforated

0801704

<https://www.phoenixcontact.com/us/products/0801704>



DIN rail, unperforated, Pack of 25 (50 m), acc. to EN 60715, material: Aluminum, uncoated, Standard profile, color: silver

UT 4-TWIN BK - Feed-through terminal block

1079167

<https://www.phoenixcontact.com/us/products/1079167>



NS 35/ 7,5 ZN PERF 2000MM - DIN rail perforated

1206421

<https://www.phoenixcontact.com/us/products/1206421>



DIN rail perforated, Pack of 25 (50 m), acc. to EN 60715, material: Steel, galvanized, Standard profile, color: silver

NS 35/ 7,5 ZN UNPERF 2000MM - DIN rail, unperforated

1206434

<https://www.phoenixcontact.com/us/products/1206434>



DIN rail, unperforated, Pack of 25 (50 m), acc. to EN 60715, material: Steel, galvanized, Standard profile, color: silver

UT 4-TWIN BK - Feed-through terminal block

1079167

<https://www.phoenixcontact.com/us/products/1079167>



NS 35/ 7,5 CU UNPERF 2000MM-VPE 10 - DIN rail, unperforated

0801762

<https://www.phoenixcontact.com/us/products/0801762>



DIN rail, unperforated, Pack of 10 (20 m), acc. to EN 60715, material: Copper, uncoated, Standard profile, color: copper-colored

NS 35/ 7,5 CAP - End cap

1206560

<https://www.phoenixcontact.com/us/products/1206560>

DIN rail end piece, for DIN rail NS 35/7.5



UT 4-TWIN BK - Feed-through terminal block

1079167

<https://www.phoenixcontact.com/us/products/1079167>



NS 35/15 PERF 2000MM - DIN rail perforated

1201730

<https://www.phoenixcontact.com/us/products/1201730>



DIN rail perforated, Pack of 25 (50 m), similar to EN 60715, material: Steel, galvanized, passivated with a thick layer, Standard profile, color: silver

NS 35/15 UNPERF 2000MM - DIN rail, unperforated

1201714

<https://www.phoenixcontact.com/us/products/1201714>



DIN rail, unperforated, Pack of 25 (50 m), similar to EN 60715, material: Steel, galvanized, passivated with a thick layer, Standard profile, color: silver

UT 4-TWIN BK - Feed-through terminal block

1079167

<https://www.phoenixcontact.com/us/products/1079167>



NS 35/15 WH PERF 2000MM - DIN rail perforated

0806602

<https://www.phoenixcontact.com/us/products/0806602>



DIN rail perforated, Pack of 25 (50 m), similar to EN 60715, material: Steel, Galvanized, white passivated, Standard profile, color: white

NS 35/15 WH UNPERF 2000MM-VPE 10 - DIN rail, unperforated

1204135

<https://www.phoenixcontact.com/us/products/1204135>



DIN rail, unperforated, Pack of 10 (20 m), similar to EN 60715, material: Steel, Galvanized, white passivated, Standard profile, color: silver

UT 4-TWIN BK - Feed-through terminal block

1079167

<https://www.phoenixcontact.com/us/products/1079167>



NS 35/15 AL UNPERF 2000MM - DIN rail, unperforated

1201756

<https://www.phoenixcontact.com/us/products/1201756>



DIN rail, unperforated, similar to EN 60715, material: Aluminum, uncoated, Standard profile, color: silver

NS 35/15 ZN PERF 2000MM - DIN rail perforated

1206599

<https://www.phoenixcontact.com/us/products/1206599>



DIN rail perforated, Pack of 25 (50 m), similar to EN 60715, material: Steel, galvanized, Standard profile, color: silver

UT 4-TWIN BK - Feed-through terminal block

1079167

<https://www.phoenixcontact.com/us/products/1079167>



NS 35/15 ZN UNPERF 2000MM - DIN rail, unperforated

1206586

<https://www.phoenixcontact.com/us/products/1206586>



DIN rail, unperforated, Pack of 25 (50 m), similar to EN 60715, material: Steel, galvanized, Standard profile, color: silver

NS 35/15 CU UNPERF 2000MM-VPE 10 - DIN rail, unperforated

1201895

<https://www.phoenixcontact.com/us/products/1201895>



DIN rail, unperforated, Pack of 10 (20 m), similar to EN 60715, material: Copper, uncoated, Standard profile, color: copper-colored

UT 4-TWIN BK - Feed-through terminal block

1079167

<https://www.phoenixcontact.com/us/products/1079167>

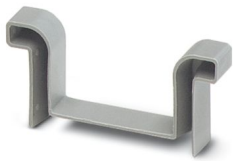


NS 35/15 CAP - End cap

1206573

<https://www.phoenixcontact.com/us/products/1206573>

DIN rail end piece, for DIN rail NS 35/15



NS 35/15-2,3 UNPERF 2000MM-VPE 10 - DIN rail, unperforated

1201798

<https://www.phoenixcontact.com/us/products/1201798>



DIN rail, unperforated, Pack of 10 (20 m), acc. to EN 60715, material: Steel, galvanized, passivated with a thick layer, Standard profile 2.3 mm, color: silver

UT 4-TWIN BK - Feed-through terminal block



1079167

<https://www.phoenixcontact.com/us/products/1079167>

ZB 6:UNBEDRUCKT - Zack marker strip

1051003

<https://www.phoenixcontact.com/us/products/1051003>



Zack marker strip, Strip, white, unlabeled, can be labeled with: PLOTMARK, CMS-P1-PLOTTER, mounting type: snapped, for terminal block width: 6.2 mm, lettering field size: 6.15 x 10.5 mm, Number of individual labels: 10

ZB 6 CUS - Zack marker strip

0824992

<https://www.phoenixcontact.com/us/products/0824992>



Zack marker strip, can be ordered: Strip, white, labeled according to customer specifications, mounting type: snap into tall marker groove, for terminal block width: 6.2 mm, lettering field size: 6.15 x 10.5 mm, Number of individual labels: 10

UT 4-TWIN BK - Feed-through terminal block



1079167

<https://www.phoenixcontact.com/us/products/1079167>

ZB 6,LGS:FORTL.ZAHLEN - Zack marker strip

1051016

<https://www.phoenixcontact.com/us/products/1051016>



Zack marker strip, Strip, white, labeled, can be labeled with: CMS-P1-PLOTTER, printed horizontally: consecutive numbers 1 ... 10, 11 ... 20, etc. up to 491 ... 500, mounting type: snapped, for terminal block width: 6.2 mm, lettering field size: 6. 15 x 10.5 mm, Number of individual labels: 10

ZB 6,QR:FORTL.ZAHLEN - Zack marker strip

1051029

<https://www.phoenixcontact.com/us/products/1051029>



Zack marker strip, Strip, white, labeled, can be labeled with: CMS-P1-PLOTTER, Printed vertically: consecutive numbers 1 ... 10, 11 ... 20, etc. up to 491 ... 500, mounting type: snapped, for terminal block width: 6.2 mm, lettering field size: 6. 15 x 10.5 mm, Number of individual labels: 10

UT 4-TWIN BK - Feed-through terminal block



1079167

<https://www.phoenixcontact.com/us/products/1079167>

ZB 6,LGS:GLEICHE ZAHLEN - Zack marker strip

1051032

<https://www.phoenixcontact.com/us/products/1051032>



Zack marker strip, Strip, white, labeled, can be labeled with: CMS-P1-PLOTTER, printed horizontally: Identical numbers 1 or 2, etc. up to 100, mounting type: snapped, for terminal block width: 6.2 mm, lettering field size: 6.15 x 10.5 mm, Number of individual labels: 10

ZB 6,LGS:L1-N,PE - Marker for terminal blocks

1051414

<https://www.phoenixcontact.com/us/products/1051414>



Marker for terminal blocks, Strip, white, labeled, can be labeled with: CMS-P1-PLOTTER, horizontal: L1, L2, L3, N, PE, L1, L2, L3, N, PE, mounting type: snapped, for terminal block width: 6.2 mm, lettering field size: 6.15 x 10.5 mm, Number of individual labels: 10

UT 4-TWIN BK - Feed-through terminal block



1079167

<https://www.phoenixcontact.com/us/products/1079167>

ZB 6,LGS:U-N - Marker for terminal blocks

1051430

<https://www.phoenixcontact.com/us/products/1051430>



Marker for terminal blocks, Strip, white, labeled, can be labeled with: CMS-P1-PLOTTER, printed horizontally: U, V, W, N, GND, U, V, W, N, GND, mounting type: snapped, for terminal block width: 6.2 mm, lettering field size: 6.15 x 10.5 mm, Number of individual labels: 10

UC-TM 6 - Marker for terminal blocks

0818085

<https://www.phoenixcontact.com/us/products/0818085>



Marker for terminal blocks, Sheet, white, unlabeled, can be labeled with: BLUEMARK ID COLOR, BLUEMARK ID, BLUEMARK CLED, PLOTMARK, CMS-P1-PLOTTER, mounting type: snapped, for terminal block width: 6.2 mm, lettering field size: 5.6 x 10.5 mm, Number of individual labels: 80

UT 4-TWIN BK - Feed-through terminal block

1079167

<https://www.phoenixcontact.com/us/products/1079167>



UC-TM 6 CUS - Marker for terminal blocks

0824589

<https://www.phoenixcontact.com/us/products/0824589>



Marker for terminal blocks, can be ordered: by sheet, white, labeled according to customer specifications, mounting type: snap into tall marker groove, for terminal block width: 6.2 mm, lettering field size: 5.6 x 10.5 mm, Number of individual labels: 80

UCT-TM 6 - Marker for terminal blocks

0828736

<https://www.phoenixcontact.com/us/products/0828736>



Marker for terminal blocks, Sheet, white, unlabeled, can be labeled with: TOPMARK NEO, TOPMARK LASER, BLUEMARK ID COLOR, BLUEMARK ID, BLUEMARK CLED, THERMOMARK PRIME, THERMOMARK CARD 2.0, THERMOMARK CARD, mounting type: snapped, for terminal block width: 6.2 mm, lettering field size: 5.6 x 10.5 mm, Number of individual labels: 60

UT 4-TWIN BK - Feed-through terminal block

1079167

<https://www.phoenixcontact.com/us/products/1079167>



UCT-TM 6 CUS - Marker for terminal blocks

0829602

<https://www.phoenixcontact.com/us/products/0829602>



Marker for terminal blocks, can be ordered: by sheet, white, labeled according to customer specifications, mounting type: snap into tall marker groove, for terminal block width: 6.2 mm, lettering field size: 5.6 x 10.5 mm, Number of individual labels: 60

MPS-MT - Test plug

0201744

<https://www.phoenixcontact.com/us/products/0201744>



Test plug, with solder connection up to 1 mm² conductor cross section, number of positions: 1, color: gray

UT 4-TWIN BK - Feed-through terminal block

1079167

<https://www.phoenixcontact.com/us/products/1079167>



MPS-IH WH - Insulating sleeve

0201663

<https://www.phoenixcontact.com/us/products/0201663>

Insulating sleeve, color: white



MPS-IH RD - Insulating sleeve

0201676

<https://www.phoenixcontact.com/us/products/0201676>

Insulating sleeve, color: red



UT 4-TWIN BK - Feed-through terminal block

1079167

<https://www.phoenixcontact.com/us/products/1079167>

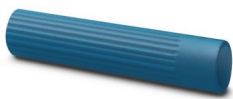


MPS-IH BU - Insulating sleeve

0201689

<https://www.phoenixcontact.com/us/products/0201689>

Insulating sleeve, color: blue



MPS-IH YE - Insulating sleeve

0201692

<https://www.phoenixcontact.com/us/products/0201692>

Insulating sleeve, color: yellow



UT 4-TWIN BK - Feed-through terminal block

1079167

<https://www.phoenixcontact.com/us/products/1079167>



MPS-IH GN - Insulating sleeve

0201702

<https://www.phoenixcontact.com/us/products/0201702>

Insulating sleeve, color: green



MPS-IH GY - Insulating sleeve

0201728

<https://www.phoenixcontact.com/us/products/0201728>

Insulating sleeve, color: gray



UT 4-TWIN BK - Feed-through terminal block

1079167

<https://www.phoenixcontact.com/us/products/1079167>



MPS-IH BK - Insulating sleeve

0201731

<https://www.phoenixcontact.com/us/products/0201731>

Insulating sleeve, color: black



PAI-4-FIX-5/6 BU - Test adapter

3035975

<https://www.phoenixcontact.com/us/products/3035975>

4 mm test adapter, for terminal blocks with 5.2 mm and 6.2 mm pitch



UT 4-TWIN BK - Feed-through terminal block

1079167

<https://www.phoenixcontact.com/us/products/1079167>



PAI-4-FIX-5/6 OG - Test adapter

3035974

<https://www.phoenixcontact.com/us/products/3035974>



4 mm test adapter, for terminal blocks with 5.2 mm and 6.2 mm pitch

PAI-4-FIX-5/6 YE - Test adapter

3035977

<https://www.phoenixcontact.com/us/products/3035977>



4 mm test adapter, for terminal blocks with 5.2 mm and 6.2 mm pitch

UT 4-TWIN BK - Feed-through terminal block



1079167

<https://www.phoenixcontact.com/us/products/1079167>

PAI-4-FIX-5/6 RD - Test adapter

3035976

<https://www.phoenixcontact.com/us/products/3035976>



4 mm test adapter, for terminal blocks with 5.2 mm and 6.2 mm pitch

PAI-4-FIX-5/6 GN - Test adapter

3035978

<https://www.phoenixcontact.com/us/products/3035978>



4 mm test adapter, for terminal blocks with 5.2 mm and 6.2 mm pitch

UT 4-TWIN BK - Feed-through terminal block



1079167

<https://www.phoenixcontact.com/us/products/1079167>

PAI-4-FIX-5/6 BK - Test adapter

3035980

<https://www.phoenixcontact.com/us/products/3035980>



4 mm test adapter, for terminal blocks with 5.2 mm and 6.2 mm pitch

PAI-4-FIX-5/6 GY - Test adapter

3035982

<https://www.phoenixcontact.com/us/products/3035982>



4 mm test adapter, for terminal blocks with 5.2 mm and 6.2 mm pitch

UT 4-TWIN BK - Feed-through terminal block



1079167

<https://www.phoenixcontact.com/us/products/1079167>

PAI-4-FIX-5/6 VT - Test adapter

3035979

<https://www.phoenixcontact.com/us/products/3035979>



4 mm test adapter, for terminal blocks with 5.2 mm and 6.2 mm pitch

PAI-4-FIX-5/6 BN - Test adapter

3035981

<https://www.phoenixcontact.com/us/products/3035981>



4 mm test adapter, for terminal blocks with 5.2 mm and 6.2 mm pitch

UT 4-TWIN BK - Feed-through terminal block

1079167

<https://www.phoenixcontact.com/us/products/1079167>



PAI-4-FIX-5/6 WH - Test adapter

3035983

<https://www.phoenixcontact.com/us/products/3035983>



4 mm test adapter, for terminal blocks with 5.2 mm and 6.2 mm pitch

PS-6 - Test plug

3030996

<https://www.phoenixcontact.com/us/products/3030996>



Test plug, Modular test plug, number of positions: 1, color: red

UT 4-TWIN BK - Feed-through terminal block

1079167

<https://www.phoenixcontact.com/us/products/1079167>



CLIPFIX 35 - End bracket

3022218

<https://www.phoenixcontact.com/us/products/3022218>



Quick mounting end clamp for NS 35/7,5 DIN rail or NS 35/15 DIN rail, with marking option, width: 9.5 mm, color: gray

CLIPFIX 35-5 - End bracket

3022276

<https://www.phoenixcontact.com/us/products/3022276>



Quick mounting end clamp for NS 35/7,5 DIN rail or NS 35/15 DIN rail, with marking option, with parking option for FBS...5, FBS...6, KSS 5, KSS 6, width: 5.15 mm, color: gray

UT 4-TWIN BK - Feed-through terminal block

1079167

<https://www.phoenixcontact.com/us/products/1079167>

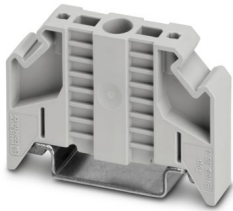


E/NS 35 N - End bracket

0800886

<https://www.phoenixcontact.com/us/products/0800886>

End clamp, width: 9.5 mm, color: gray



PAI-4-N GY - Test adapter

3032871

<https://www.phoenixcontact.com/us/products/3032871>

4 mm test adapter, for terminal blocks with 5.2 mm, 6.2 mm and 8.2 mm pitch



UT 4-TWIN BK - Feed-through terminal block

1079167

<https://www.phoenixcontact.com/us/products/1079167>



SF-SL 0,6X3,5-100 S-VDE - Screwdriver

1212587

<https://www.phoenixcontact.com/us/products/1212587>



Actuation tool, for ST terminal blocks, VDE insulated, with slimmer insulation integrated in the blade, also suitable for use as a bladed screwdriver, size: 0.6 x 3.5 x 100 mm, 2-component grip, with non-slip grip

X-PEN 0,35 - Marker pen

0811228

<https://www.phoenixcontact.com/us/products/0811228>



Marker pen without ink cartridge, for manual labeling of markers, labeling extremely wipe-proof, line thickness 0.35 mm

UT 4-TWIN BK - Feed-through terminal block



1079167

<https://www.phoenixcontact.com/us/products/1079167>

SZS 0,6X3,5 - Screwdriver

1205053

<https://www.phoenixcontact.com/us/products/1205053>



Actuation tool, for ST terminal blocks, insulated, also suitable for use as a bladed screwdriver, size: 0.6 x 3.5 x 100 mm, 2-component grip, with non-slip grip

Phoenix Contact 2024 © - all rights reserved

<https://www.phoenixcontact.com>

Phoenix Contact USA
586 Fulling Mill Road
Middletown, PA 17057, United States
(+717) 944-1300
info@phoenixcon.com