

FL SWITCH 1004N-FX SM - Industrial Ethernet Switch



1085214

<https://www.phoenixcontact.com/us/products/1085214>

Please be informed that the data shown in this PDF document is generated from our online catalog. Please find the complete data in the user documentation. Our general terms of use for downloads are valid.



Unmanaged Switch 1000, 4 RJ45 ports 10/100 Mbps, 1 SC single mode 100 Mbps, PROFINET Conformance-Class A

Your advantages

- QoS-prioritized (Quality of Service) messages
- RJ45 ports support a transmission speed of 10/100 Mbps
- Local diagnostic indicators with LEDs
- Enhanced traffic prioritization for automation protocols
- PROFINET PTCP filter for reliable communication on PROFINET networks
- Energy-efficient Ethernet in accord. with IEEE 802.3az
- PROFINET conformance Class A for real-time data exchange, alarms, and diagnostics
- Auto negotiation and autocrossing detection simplifies installation and setup

Commercial data

Item number	1085214
Packing unit	1 pc
Minimum order quantity	1 pc
Sales key	DN20
Product key	DNN116
GTIN	4055626834498
Weight per piece (including packing)	218 g
Weight per piece (excluding packing)	137 g
Customs tariff number	85176200
Country of origin	TW

Technical data

Dimensions

Width	22.5 mm
Height	117 mm
Depth	84 mm

Notes

Note on application

Note on application	Only for industrial use
---------------------	-------------------------

Utilization restriction

EMC note	EMC: class A product, see manufacturer's declaration in the download area
----------	---

Material specifications

Housing material	Polycarbonate fiber reinforced
------------------	--------------------------------

Mounting

Mounting type	DIN rail mounting
---------------	-------------------

Interfaces

Ethernet (RJ45)

Number of interfaces	4
Connection method	RJ45
Note on the connection method	Auto negotiation and autocrossing
Transmission speed	10/100 Mbps
Transmission physics	Ethernet in RJ45 twisted pair
Transmission length	100 m (per segment)
Signal LEDs	Data receive, link status
No. of channels	4 (RJ45 ports)

Ethernet FO

Number of interfaces	1
Connection method	SC
Transmission speed	100 Mbps (full duplex)
Transmit capacity, minimum	-20 dBm
Transmit capacity, maximum	0 dBm
Minimum receiver sensitivity	-32 dBm
Maximum receiver sensitivity	0 dBm
Transmission physics	Single-mode fiberglass
Transmission length	20 km (fiberglass with F-G 9/125 0.5 dB/km)
Wavelength	1310 nm
No. of channels	1 (SC single mode)

FL SWITCH 1004N-FX SM - Industrial Ethernet Switch



1085214

<https://www.phoenixcontact.com/us/products/1085214>

Product properties

Product type	Switch
Product family	Unmanaged Switch 1000
MTTF	95.9 Years (MIL-HDBK-217F standard, temperature 25°C, operating cycle 100%)
	298.8 Years (SN 29500 standard, temperature 25°C, operating cycle 21%)
	188.3 Years (Telcordia standard, 25°C temperature, 21% operating cycle (5 days a week, 8 hours a day))

Data management status

Article revision	03
------------------	----

Switch functions

Basic functions	Unmanaged switch
	Autonegotiation
	Store and Forward switching mode
PROFINET conformance class	Conformance-Class A
MAC address table	2k
Status and diagnostic indicators	LEDs: U _S , link and activity per port
Additional functions	100 BASE-TX/100BASE-FX (IEEE 802.3u)
	Quality of Service (QoS) prioritization (IEEE 802.1p)
	Energy-efficient Ethernet (IEEE 802.3az)
	10Base-T (IEEE 802.3)

Security functions

Basic functions	Unmanaged switch
	Autonegotiation
	Store and Forward switching mode

Electrical properties

Maximum power dissipation for nominal condition	2.196 W (at 24 V DC)
Transmission medium	Copper
	FO

Supply

Supply voltage (DC)	24 V DC
Supply voltage (AC)	24 V AC (50/60 Hz)
Supply voltage range	9 V DC ... 32 V DC
	18 V AC ... 30 V AC (50/60 Hz)
Power supply connection	Via COMBICON, max. conductor cross section 2.5 mm²
Residual ripple	3.6 V _{PP} (within the permitted voltage range)
Max. current consumption	244 mA (at 9 V DC)
Typical current consumption	51 mA (at 24 V DC)

Connection data

FL SWITCH 1004N-FX SM - Industrial Ethernet Switch



1085214

<https://www.phoenixcontact.com/us/products/1085214>

Connection technology

Connection name	Power supply
pluggable	yes

Power supply

Connection method	Push-in spring connection
Conductor cross section, rigid	0.2 mm² ... 2.5 mm²
Conductor cross section, flexible	0.2 mm² ... 2.5 mm²
Conductor cross section AWG	24 ... 12
Conductor cross section, flexible, with ferrule, with plastic sleeve	0.25 mm² ... 2.5 mm²
Conductor cross section flexible, with ferrule without plastic sleeve	0.25 mm² ... 2.5 mm²
Stripping length	10 mm

Environmental and real-life conditions

Ambient conditions

Degree of protection	IP30
Ambient temperature (operation)	-10 °C ... 60 °C
Ambient temperature (storage/transport)	-40 °C ... 85 °C
Altitude	2000 m (maximum)
Permissible humidity (operation)	5 % ... 95 % (non-condensing)
Permissible humidity (storage/transport)	5 % ... 95 % (non-condensing)
Shock (operation)	30g (EN 60068-2-27)
Vibration (operation)	in acc. with IEC 60068-2-6: 5g, 150 Hz
Air pressure (operation)	79 kPa ... 108 kPa up to 2000 m above mean sea level (Without derating)
Air pressure (storage/transport)	79 kPa ... 108 kPa up to 2000 m above mean sea level (Without derating)

Approvals

Conformity/Approvals

UL, USA / Canada	UL 61010-1, UL 61010-2-201, UL 62368-1 Class I, Div. 2, Groups A, B, C, D, T4 Class I, Zone 2, Group IIC, T4
FCC	Title 47 Part 15 Subpart B:2018 Class A

System properties

Functionality

Basic functions	Unmanaged switch
	Autonegotiation
	Store and Forward switching mode

Signaling

Status display	LEDs: U _S , link and activity per port
----------------	---

FL SWITCH 1004N-FX SM - Industrial Ethernet Switch











1085214

<https://www.phoenixcontact.com/us/products/1085214>

Approvals

To download certificates, visit the product detail page: <https://www.phoenixcontact.com/us/products/1085214>

	EAC Approval ID: RU D-DE.GB09.B.00312
	UL Listed Approval ID: E238705
	cUL Listed Approval ID: E238705
	cUL Listed Approval ID: E140403
	UL Listed Approval ID: E140403
	KC Approval ID: R-R-PCK-1085214
	UAE-RoHS Approval ID: 23-09-84493
	cUL Listed Approval ID: E196811
	UL Listed Approval ID: E196811
	cULus Listed

FL SWITCH 1004N-FX SM - Industrial Ethernet Switch



1085214

<https://www.phoenixcontact.com/us/products/1085214>

Classifications

ECLASS

ECLASS-11.0	19170402
ECLASS-12.0	19170402
ECLASS-13.0	19170402

ETIM

ETIM 9.0	EC000734
----------	----------

UNSPSC

UNSPSC 21.0	43222600
-------------	----------

1085214

<https://www.phoenixcontact.com/us/products/1085214>

Environmental product compliance

EU RoHS	
Fulfills EU RoHS substance requirements	Yes
Exemption	7(a), 7(c)-I
China RoHS	
Environment friendly use period (EFUP)	EFUP-50
	An article-related China RoHS declaration table can be found in the download area for the respective article under "Manufacturer declaration". For all articles with EFUP-E, no China RoHS declaration table issued and required.
EU REACH SVHC	
REACH candidate substance (CAS No.)	Lead(CAS: 7439-92-1)
SCIP	2d06d5ab-21ba-4a08-b6ba-2f7208360ca9

1085214

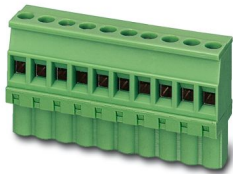
<https://www.phoenixcontact.com/us/products/1085214>

Accessories

MVSTBW 2,5/ 3-ST-5,08 GY - PCB connector

1783685

<https://www.phoenixcontact.com/us/products/1783685>

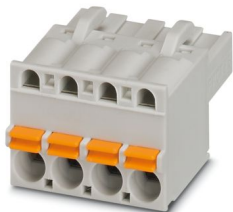


PCB connector, nominal cross section: 2.5 mm², color: gray, nominal current: 12 A, rated voltage (III/2): 320 V, contact surface: Sn, contact connection type: Socket, number of potentials: 3, number of rows: 1, number of positions: 3, number of connections: 3, product range: MVSTBW 2,5/...-ST, pitch: 5.08 mm, connection method: Screw connection with tension sleeve, screw head form: L Slotted, conductor/PCB connection direction: -90 °, locking clip: - Locking clip, plug-in system: COMBICON MSTB 2,5, locking: without, mounting: without, type of packaging: packed in cardboard

FKCT 2,5/ 3-ST KMGY - PCB connector

1998263

<https://www.phoenixcontact.com/us/products/1998263>



PCB connector, nominal cross section: 2.5 mm², color: light gray, nominal current: 12 A, rated voltage (III/2): 320 V, contact surface: Sn, contact connection type: Socket, number of potentials: 3, number of rows: 1, number of positions: 3, number of connections: 3, product range: FKCT 2,5/...-ST, pitch: 5 mm, connection method: Push-in spring connection, conductor/PCB connection direction: 0 °, locking clip: - Locking clip, plug-in system: COMBICON MSTB 2,5, locking: without, mounting: without, type of packaging: packed in cardboard

FL SWITCH 1004N-FX SM - Industrial Ethernet Switch



1085214

<https://www.phoenixcontact.com/us/products/1085214>

DT-LAN-CAT.6+ - Surge protection device

2881007

<https://www.phoenixcontact.com/us/products/2881007>



Surge protection in accordance with Class E_A (CAT6_A), for Gigabit Ethernet (up to 10 Gbps), token ring, FDDI/CDDI, ISDN, and DS1. Suitable for Power over Ethernet (PoE++ / 4PPoE) "Mode A" and "Mode B". RJ45 attachment plug with separate grounding cable and ground connection snap-on foot for NS 35 DIN rails.

FL CAT5 PATCH 0,5 - Patch cable

2832263

<https://www.phoenixcontact.com/us/products/2832263>



Patch cable, CAT5, assembled, 0.5 m

FL SWITCH 1004N-FX SM - Industrial Ethernet Switch



1085214

<https://www.phoenixcontact.com/us/products/1085214>

FL CAT5 PATCH 1,0 - Patch cable

2832276

<https://www.phoenixcontact.com/us/products/2832276>

Patch cable, CAT5, assembled, 1 m



FL CAT5 PATCH 2,0 - Patch cable

2832289

<https://www.phoenixcontact.com/us/products/2832289>

Patch cable, CAT5, assembled, 2 m



FL SWITCH 1004N-FX SM - Industrial Ethernet Switch



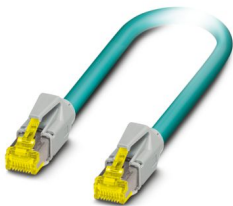
1085214

<https://www.phoenixcontact.com/us/products/1085214>

NBC-R4AC-R4AC-IE8A/.../... - Patch cable

1411854

<https://www.phoenixcontact.com/us/products/1411854>

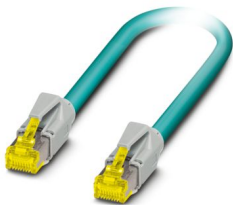


Patch cable, degree of protection: IP20, number of positions: 8, 10 Gbps, CAT6_A, cable outlet: straight, Ethernet

NBC-R4AC/10G-R4AC/10G-94F/2,0 - Patch cable

1408360

<https://www.phoenixcontact.com/us/products/1408360>



Patch cable, CAT6_A, 4-pair, shielded, connection not crossed (line), assembled at both ends with RJ45/IP20 connectors, outer sheath material: PUR, length: 2.0 m

FL SWITCH 1004N-FX SM - Industrial Ethernet Switch



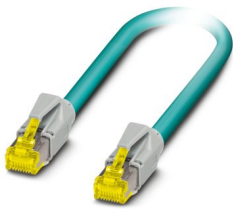
1085214

<https://www.phoenixcontact.com/us/products/1085214>

NBC-R4AC/10G-R4AC/10G-94F/3,0 - Patch cable

1408365

<https://www.phoenixcontact.com/us/products/1408365>



Patch cable, CAT6_A, 4-pair, shielded, connection not crossed (line), assembled at both ends with RJ45/IP20 connectors, outer sheath material: PUR, length: 3.0 m

FL DIN-RAIL ADAPTER 22.5 - Mounting panel

1085485

<https://www.phoenixcontact.com/us/products/1085485>



The FL DIN-RAIL ADAPTER 22.5 is designed to allow products 22.5 mm wide to be mounted flush to a standard 35 mm DIN rail, in any orientation.

FL SWITCH 1004N-FX SM - Industrial Ethernet Switch



1085214

<https://www.phoenixcontact.com/us/products/1085214>

FL PANEL ADAPTER 22.5 - Mounting panel

1085488

<https://www.phoenixcontact.com/us/products/1085488>

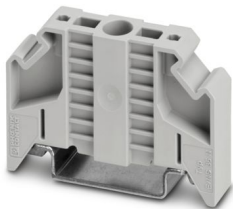


The FL PANEL ADAPTER 22.5 is designed to allow products 22.5 mm wide to be mounted flush to a panel, in any orientation.

E/NS 35 N - End bracket

0800886

<https://www.phoenixcontact.com/us/products/0800886>



End clamp, width: 9.5 mm, color: gray

FL SWITCH 1004N-FX SM - Industrial Ethernet Switch



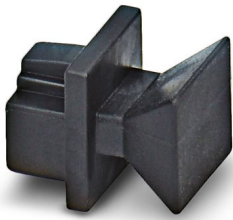
1085214

<https://www.phoenixcontact.com/us/products/1085214>

FL RJ45 PROTECT CAP - Dust protection

2832991

<https://www.phoenixcontact.com/us/products/2832991>



Dust protection caps for RJ45 socket

Phoenix Contact 2024 © - all rights reserved

<https://www.phoenixcontact.com>

Phoenix Contact USA
586 Fulling Mill Road
Middletown, PA 17057, United States
(+717) 944-1300
info@phoenixcon.com