

1118654

<https://www.phoenixcontact.com/us/products/1118654>

Please be informed that the data shown in this PDF document is generated from our online catalog. Please find the complete data in the user documentation. Our general terms of use for downloads are valid.



DIN rail housing, Lower housing part with metal foot catch, width: 50.1 mm, height: 100 mm, depth: 108.35 mm, color: black (similar RAL 9005), cross connection: DIN rail connector (optional), number of positions cross connector: 8

Your advantages

- Flexible use, thanks to the modular system and unique modularity in the connection technology
- Standardized connections such as RJ45, USB, D-SUB and antenna sockets as components that can be integrated
- Optimal space utilization, as well as adaptability of design, colors, and printing
- Eight-position DIN rail connectors with parallel and up to two serial contacts for easy module-to-module communication

Commercial data

Item number	1118654
Packing unit	5 pc
Minimum order quantity	5 pc
Sales key	AC09
Product key	ACHAEB
GTIN	4063151044558
Weight per piece (including packing)	65.34 g
Weight per piece (excluding packing)	42.2 g
Customs tariff number	85389099
Country of origin	DE

ICS50-B100X98-O-O-9005 - Mounting base housing



1118654

<https://www.phoenixcontact.com/us/products/1118654>

Technical data

Notes

Assembly note	Refer to the data sheet for the range in the download area.
Recommendation	Material of contact pads for bus connector, galvanic gold (hard gold)

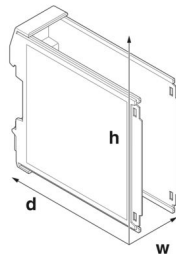
Product properties

Product type	Enclosure bottom part
Housing type	DIN rail housing
Housing series	ICS
Product family	ICS50-..100X..
Max. number of positions	80 (pitch: 3.5 mm) 64 (pitch: 5 mm)
Number of rows	4
Number (Number of connection openings)	16
Type	Lower housing part with metal foot catch
Ventilation openings present	no

Data management status

Article revision	02
------------------	----

Dimensions

Dimensional drawing	
Width	50.1 mm
Height	100 mm
Depth	108.35 mm
Depth from top edge of DIN rail to support point on upper part	98.15 mm
Dimensions	50.1 mm x 100 mm x 110 mm (Lower housing part from the top edge of the DIN rail with upper housing part) 50.1 mm x 100 mm x 116.7 mm (Lower housing part with upper housing part)

PCB design

PCB thickness	1.4 mm ... 1.8 mm
---------------	-------------------

Material specifications

Color (Housing)	black (RAL 9005)
-----------------	------------------

ICS50-B100X98-O-O-9005 - Mounting base housing



1118654

<https://www.phoenixcontact.com/us/products/1118654>

Flammability rating according to UL 94	V0
CTI according to IEC 60112	600
Housing material	Polyamide
Surface characteristics	untreated

Environmental and real-life conditions

Vibration test

Specification	IEC 60068-2-6:2007-12
Frequency	10 - 150 - 10 Hz
Sweep speed	1 octave/min
Amplitude	0.15 mm (10 Hz ... 58.1 Hz)
Acceleration	2g (58.1 Hz ... 150 Hz)
Test duration per axis	2.5 h
Test directions	X-, Y- and Z-axis

Glow-wire test

Specification	IEC 60695-2-11:2014-02
Temperature	850 °C
Time of exposure	30 s

Thermal stability / ball thrust test

Specification	IEC 60695-10-2:2014-02
Temperature	125 °C
Test duration	1 h
Force	20 N

Mechanical strength / tumbling barrel

Specification	IEC 60068-2-31:2008-05
Height of fall	50 cm
Frequency	50

Shocks

Specification	IEC 60068-2-27:2008-02
Pulse shape	Semi-sinusoidal
Acceleration	15g
Shock duration	11 ms
Number of shocks per direction	3
Test directions	X-, Y- and Z-axis (pos. and neg.)

Test for substances that would hinder coating with paint or varnish

Specification	VDMA 24364:2018-05
Result	Test passed

Degree of protection (IP code)

Specification	IEC 60529:1989-11 + AMD 1:1999-11 + AMD 2:2013-08
Result, degree of protection, IP code	IP20

ICS50-B100X98-O-O-9005 - Mounting base housing



1118654

<https://www.phoenixcontact.com/us/products/1118654>

Ambient conditions

Max. IP code to attain	IP20
Ambient temperature (operation)	-40 °C ... 105 °C (depending on power dissipation)
Ambient temperature (storage/transport)	-40 °C ... 55 °C
Ambient temperature (assembly)	-5 °C ... 100 °C
Relative humidity (storage/transport)	80 %

PCB data

Number of PCB holders	4
Type of PCB mount	Latching
Thickness of the PCB	1.4 mm ... 1.8 mm

Mounting

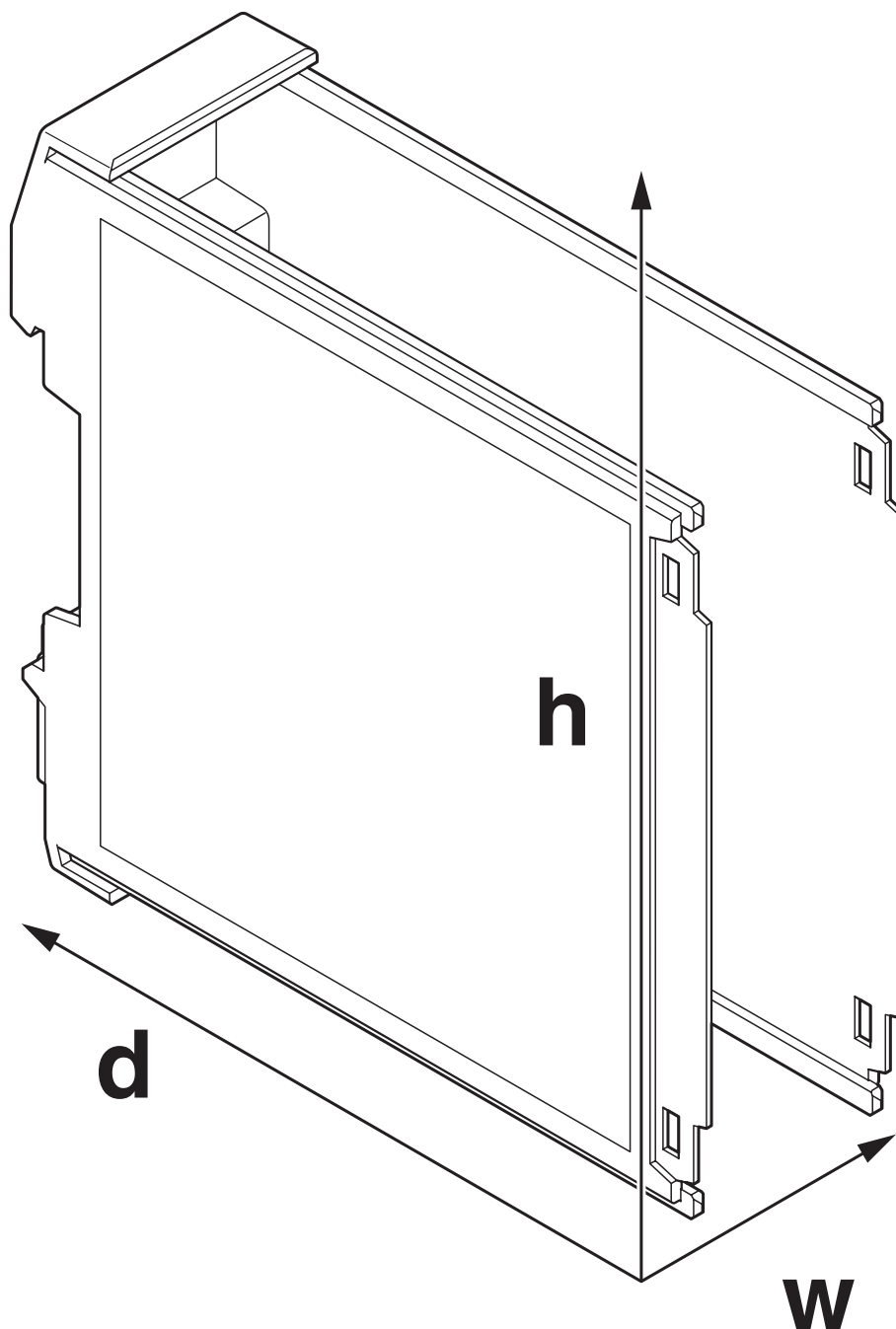
Mounting type	DIN rail mounting
---------------	-------------------

Packaging specifications

Type of packaging	packed in cardboard
Outer packaging type	Carton

Drawings

Dimensional drawing



Schematic figure for illustrating the item dimensions. The figure is not of the desired product. For further details, refer to the product drawings in the "Downloads" tab.

ICS50-B100X98-O-O-9005 - Mounting base housing



1118654

<https://www.phoenixcontact.com/us/products/1118654>

Classifications

ECLASS

ECLASS-11.0	27182702
ECLASS-13.0	27190601

ETIM

ETIM 9.0	EC002779
----------	----------

UNSPSC

UNSPSC 21.0	31261500
-------------	----------

1118654

<https://www.phoenixcontact.com/us/products/1118654>

Environmental product compliance

EU RoHS	
Fulfills EU RoHS substance requirements	Yes, No exemptions
China RoHS	
Environment friendly use period (EFUP)	EFUP-E
	No hazardous substances above the limits
EU REACH SVHC	
REACH candidate substance (CAS No.)	No substance above 0.1 wt%

ICS50-B100X98-O-O-9005 - Mounting base housing



1118654

<https://www.phoenixcontact.com/us/products/1118654>

Mandatory accessories

ICS25-C100X12-7035 - Upper housing part

2203882

<https://www.phoenixcontact.com/us/products/2203882>

DIN rail housing, Upper part, closed, width: 25 mm, height: 100 mm, depth: 14.35 mm, color: light gray (similar RAL 7035)



ICS25-C100X12-9005 - Upper housing part

1072531

<https://www.phoenixcontact.com/us/products/1072531>

DIN rail housing, Upper part, closed, width: 25 mm, height: 100 mm, depth: 14.35 mm, color: black (similar RAL 9005)



ICS50-B100X98-O-O-9005 - Mounting base housing



1118654

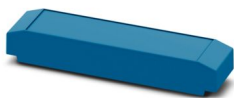
<https://www.phoenixcontact.com/us/products/1118654>

ICS25-C100X12-5015 - Upper housing part

1072378

<https://www.phoenixcontact.com/us/products/1072378>

DIN rail housing, Upper part, closed, width: 25 mm, height: 100 mm, depth: 14.35 mm, color: blue (similar RAL 5015)



ICS25-C100X12-1018 - Upper housing part

1099162

<https://www.phoenixcontact.com/us/products/1099162>

DIN rail housing, Upper part, closed, width: 25 mm, height: 100 mm, depth: 14.35 mm, color: yellow (similar RAL 1018)



ICS50-B100X98-O-O-9005 - Mounting base housing



1118654

<https://www.phoenixcontact.com/us/products/1118654>

ICS25-C100X12-DKP-7035 - Upper housing part with display

1215686

<https://www.phoenixcontact.com/us/products/1215686>

DIN rail housing, Upper part, integrated 0.96" display, resolution: 80 x 160 Pixel(s), interface: 4-wire SPI half duplex, width: 25 mm, height: 100 mm, depth: 14.35 mm

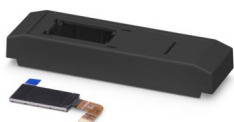


ICS25-C100X12-DKP-9005 - Upper housing part with display

1524410

<https://www.phoenixcontact.com/us/products/1524410>

DIN rail housing, Upper part, integrated 0.96" display, interface: 4-wire SPI half duplex, width: 25 mm, height: 100 mm, depth: 14.35 mm



ICS50-B100X98-O-O-9005 - Mounting base housing



1118654

<https://www.phoenixcontact.com/us/products/1118654>

ICS25-TL100X12-7035 - Upper housing part

2203883

<https://www.phoenixcontact.com/us/products/2203883>

DIN rail housing, Upper part, with transparent hinged cover, width: 25 mm, height: 101 mm, depth: 14.35 mm, color: light gray (similar RAL 7035)



ICS25-TL100X12-9005 - Upper housing part

1072528

<https://www.phoenixcontact.com/us/products/1072528>

DIN rail housing, Upper part, with transparent hinged cover, width: 25 mm, height: 101 mm, depth: 14.35 mm, color: black (similar RAL 9005)



ICS50-B100X98-O-O-9005 - Mounting base housing



1118654

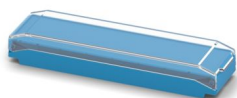
<https://www.phoenixcontact.com/us/products/1118654>

ICS25-TL100X12-5015 - Upper housing part

1072377

<https://www.phoenixcontact.com/us/products/1072377>

DIN rail housing, Upper part, with transparent hinged cover, width: 25 mm, height: 101 mm, depth: 14.35 mm, color: blue (similar RAL 5015)



Accessories

ICS-FE-CONTACT - Functional ground contact

2203904

<https://www.phoenixcontact.com/us/products/2203904>

Functional ground contact, for ICS series electronics housings



ICS50-B100X98-O-O-9005 - Mounting base housing



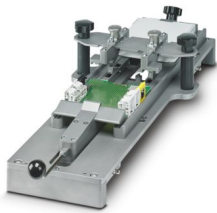
1118654

<https://www.phoenixcontact.com/us/products/1118654>

ICS MOUNTING DEVICE - Assembly tool

1118354

<https://www.phoenixcontact.com/us/products/1118354>



Equipment for fast, serial-production attachment of printed circuit boards in ICS 20 and ICS 25 housings

ICS25-F22V-7035 - Connection plate

1079495

<https://www.phoenixcontact.com/us/products/1079495>



DIN rail housing, ICS filler, with vents, width: 25 mm, height: 7.25 mm, depth: 22.4 mm, color: light gray (similar RAL 7035)

ICS50-B100X98-O-O-9005 - Mounting base housing



1118654

<https://www.phoenixcontact.com/us/products/1118654>

ICS25-F22V-9005 - Connection plate

1104313

<https://www.phoenixcontact.com/us/products/1104313>

DIN rail housing, ICS filler, with vents, width: 25 mm, height: 7.25 mm, depth: 22.4 mm, color: black (similar RAL 9005)



ICS25-F22V-5015 - Connection plate

1104318

<https://www.phoenixcontact.com/us/products/1104318>

DIN rail housing, ICS filler, with vents, width: 25 mm, height: 7.25 mm, depth: 22.4 mm, color: blue (similar RAL 5015)



ICS50-B100X98-O-O-9005 - Mounting base housing



1118654

<https://www.phoenixcontact.com/us/products/1118654>

ICS25-F22V-1018 - Connection plate

1287382

<https://www.phoenixcontact.com/us/products/1287382>

DIN rail housing, ICS filler, with vents, width: 25 mm, height: 7.25 mm, depth: 22.4 mm, color: yellow (similar RAL 1018)



ICS25-F45V-7035 - Connection plate

1079492

<https://www.phoenixcontact.com/us/products/1079492>

DIN rail housing, ICS filler, with vents, width: 25 mm, height: 7.25 mm, depth: 44.9 mm, color: light gray (similar RAL 7035)



ICS50-B100X98-O-O-9005 - Mounting base housing



1118654

<https://www.phoenixcontact.com/us/products/1118654>

ICS25-F45V-9005 - Connection plate

1104312

<https://www.phoenixcontact.com/us/products/1104312>

DIN rail housing, ICS filler, with vents, width: 25 mm, height: 7.25 mm, depth: 44.9 mm, color: black (similar RAL 9005)



ICS25-F45V-5015 - Connection plate

1104317

<https://www.phoenixcontact.com/us/products/1104317>

DIN rail housing, ICS filler, with vents, width: 25 mm, height: 7.25 mm, depth: 44.9 mm, color: blue (similar RAL 5015)



ICS50-B100X98-O-O-9005 - Mounting base housing



1118654

<https://www.phoenixcontact.com/us/products/1118654>

ICS25-F45V-1018 - Connection plate

1287380

<https://www.phoenixcontact.com/us/products/1287380>

DIN rail housing, ICS filler, with vents, width: 25 mm, height: 7.25 mm, depth: 44.9 mm, color: yellow (similar RAL 1018)



ICS25-F67V-1018 - Connection plate

1287406

<https://www.phoenixcontact.com/us/products/1287406>

DIN rail housing, ICS filler, with vents, width: 25 mm, height: 7.25 mm, depth: 67.3 mm, color: yellow (similar RAL 1018)



ICS50-B100X98-O-O-9005 - Mounting base housing



1118654

<https://www.phoenixcontact.com/us/products/1118654>

ICS25-F67V-9005 - Connection plate

1287407

<https://www.phoenixcontact.com/us/products/1287407>

DIN rail housing, ICS filler, with vents, width: 25 mm, height: 7.25 mm, depth: 67.3 mm, color: black (similar RAL 9005)



ICS25-F67V-5015 - Connection plate

1287408

<https://www.phoenixcontact.com/us/products/1287408>

DIN rail housing, ICS filler, with vents, width: 25 mm, height: 7.25 mm, depth: 67.3 mm, color: blue (similar RAL 5015)



ICS50-B100X98-O-O-9005 - Mounting base housing



1118654

<https://www.phoenixcontact.com/us/products/1118654>

ICS25-F67V-7035 - Connection plate

1287409

<https://www.phoenixcontact.com/us/products/1287409>

DIN rail housing, ICS filler, with vents, width: 25 mm, height: 7.25 mm, depth: 67.3 mm, color: light gray (similar RAL 7035)



ICS25-F90V-1018 - Connection plate

1287402

<https://www.phoenixcontact.com/us/products/1287402>

DIN rail housing, ICS filler, with vents, width: 25 mm, height: 7.25 mm, depth: 89.8 mm, color: yellow (similar RAL 1018)



ICS50-B100X98-O-O-9005 - Mounting base housing



1118654

<https://www.phoenixcontact.com/us/products/1118654>

ICS25-F90V-9005 - Connection plate

1287403

<https://www.phoenixcontact.com/us/products/1287403>

DIN rail housing, ICS filler, with vents, width: 25 mm, height: 7.25 mm, depth: 89.8 mm, color: black (similar RAL 9005)



ICS25-F90V-5015 - Connection plate

1287404

<https://www.phoenixcontact.com/us/products/1287404>

DIN rail housing, ICS filler, with vents, width: 25 mm, height: 7.25 mm, depth: 89.8 mm, color: blue (similar RAL 5015)



ICS50-B100X98-O-O-9005 - Mounting base housing



1118654

<https://www.phoenixcontact.com/us/products/1118654>

ICS25-F90V-7035 - Connection plate

1287405

<https://www.phoenixcontact.com/us/products/1287405>

DIN rail housing, ICS filler, with vents, width: 25 mm, height: 7.25 mm, depth: 89.8 mm, color: light gray (similar RAL 7035)



ICS25-F22S-7035 - Connection plate

2203890

<https://www.phoenixcontact.com/us/products/2203890>

DIN rail housing, ICS filler, closed, width: 25 mm, height: 7.25 mm, depth: 22.4 mm, color: light gray (similar RAL 7035)



ICS50-B100X98-O-O-9005 - Mounting base housing



1118654

<https://www.phoenixcontact.com/us/products/1118654>

ICS25-F22S-9005 - Connection plate

1072520

<https://www.phoenixcontact.com/us/products/1072520>

DIN rail housing, ICS filler, closed, width: 25 mm, height: 7.25 mm, depth: 22.4 mm, color: black (similar RAL 9005)



ICS25-F22S-5015 - Connection plate

1071794

<https://www.phoenixcontact.com/us/products/1071794>

DIN rail housing, ICS filler, closed, width: 25 mm, height: 7.25 mm, depth: 22.4 mm, color: blue (similar RAL 5015)



ICS50-B100X98-O-O-9005 - Mounting base housing

1118654

<https://www.phoenixcontact.com/us/products/1118654>



ICS25-F22S-1018 - Connection plate

1099531

<https://www.phoenixcontact.com/us/products/1099531>

DIN rail housing, ICS filler, closed, width: 25 mm, height: 7.25 mm, depth: 22.4 mm, color: yellow (similar RAL 1018)



ICS25-F45S-7035 - Connection plate

2203891

<https://www.phoenixcontact.com/us/products/2203891>

DIN rail housing, ICS filler, closed, width: 25 mm, height: 7.25 mm, depth: 44.9 mm, color: light gray (similar RAL 7035)



ICS50-B100X98-O-O-9005 - Mounting base housing



1118654

<https://www.phoenixcontact.com/us/products/1118654>

ICS25-F45S-9005 - Connection plate

1072519

<https://www.phoenixcontact.com/us/products/1072519>

DIN rail housing, ICS filler, closed, width: 25 mm, height: 7.25 mm, depth: 44.9 mm, color: black (similar RAL 9005)



ICS25-F45S-5015 - Connection plate

1071767

<https://www.phoenixcontact.com/us/products/1071767>

DIN rail housing, ICS filler, closed, width: 25 mm, height: 7.25 mm, depth: 44.9 mm, color: blue (similar RAL 5015)



ICS50-B100X98-O-O-9005 - Mounting base housing

1118654

<https://www.phoenixcontact.com/us/products/1118654>



ICS25-F45S-1018 - Connection plate

1099555

<https://www.phoenixcontact.com/us/products/1099555>

DIN rail housing, ICS filler, closed, width: 25 mm, height: 7.25 mm, depth: 44.9 mm, color: yellow (similar RAL 1018)



ICS25-F67S-7035 - Connection plate

1287434

<https://www.phoenixcontact.com/us/products/1287434>

DIN rail housing, ICS filler, closed, width: 25 mm, height: 7.25 mm, depth: 67.3 mm, color: light gray (similar RAL 7035)



ICS50-B100X98-O-O-9005 - Mounting base housing



1118654

<https://www.phoenixcontact.com/us/products/1118654>

ICS25-F67S-9005 - Connection plate

1287431

<https://www.phoenixcontact.com/us/products/1287431>

DIN rail housing, ICS filler, closed, width: 25 mm, height: 7.25 mm, depth: 67.3 mm, color: black (similar RAL 9005)



ICS25-F67S-5015 - Connection plate

1287433

<https://www.phoenixcontact.com/us/products/1287433>

DIN rail housing, ICS filler, closed, width: 25 mm, height: 7.25 mm, depth: 67.3 mm, color: blue (similar RAL 5015)



ICS50-B100X98-O-O-9005 - Mounting base housing



1118654

<https://www.phoenixcontact.com/us/products/1118654>

ICS25-F67S-1018 - Connection plate

1287430

<https://www.phoenixcontact.com/us/products/1287430>

DIN rail housing, ICS filler, closed, width: 25 mm, height: 7.25 mm, depth: 67.3 mm, color: yellow (similar RAL 1018)



ICS25-F90S-7035 - Connection plate

1287425

<https://www.phoenixcontact.com/us/products/1287425>

DIN rail housing, ICS filler, closed, width: 25 mm, height: 7.25 mm, depth: 89.8 mm, color: light gray (similar RAL 7035)



ICS50-B100X98-O-O-9005 - Mounting base housing



1118654

<https://www.phoenixcontact.com/us/products/1118654>

ICS25-F90S-9005 - Connection plate

1287415

<https://www.phoenixcontact.com/us/products/1287415>

DIN rail housing, ICS filler, closed, width: 25 mm, height: 7.25 mm, depth: 89.8 mm, color: black (similar RAL 9005)



ICS25-F90S-5015 - Connection plate

1287416

<https://www.phoenixcontact.com/us/products/1287416>

DIN rail housing, ICS filler, closed, width: 25 mm, height: 7.25 mm, depth: 89.8 mm, color: blue (similar RAL 5015)



ICS50-B100X98-O-O-9005 - Mounting base housing



1118654

<https://www.phoenixcontact.com/us/products/1118654>

ICS25-F90S-1018 - Connection plate

1287414

<https://www.phoenixcontact.com/us/products/1287414>

DIN rail housing, ICS filler, closed, width: 25 mm, height: 7.25 mm, depth: 89.8 mm, color: yellow (similar RAL 1018)



ICS25-F22A-7035 - Connection plate

2203894

<https://www.phoenixcontact.com/us/products/2203894>

DIN rail housing, ICS filler, with antenna function cutout, width: 25 mm, height: 7.25 mm, depth: 22.4 mm, color: light gray (similar RAL 7035)



ICS50-B100X98-O-O-9005 - Mounting base housing



1118654

<https://www.phoenixcontact.com/us/products/1118654>

ICS25-F22A6-7035 - Connection plate

1287369

<https://www.phoenixcontact.com/us/products/1287369>

DIN rail housing, ICS filler, with antenna function cutout, width: 25 mm, height: 7.25 mm, depth: 22.4 mm, color: light gray (similar RAL 7035)



ICS25-F22A-9005 - Connection plate

1072502

<https://www.phoenixcontact.com/us/products/1072502>

DIN rail housing, ICS filler, with antenna function cutout, width: 25 mm, height: 7.25 mm, depth: 22.4 mm, color: black (similar RAL 9005)



ICS50-B100X98-O-O-9005 - Mounting base housing



1118654

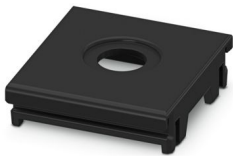
<https://www.phoenixcontact.com/us/products/1118654>

ICS25-F22A6-9005 - Connection plate

1287367

<https://www.phoenixcontact.com/us/products/1287367>

DIN rail housing, ICS filler, with antenna function cutout, width: 25 mm, height: 7.25 mm, depth: 22.4 mm, color: black (similar RAL 9005)

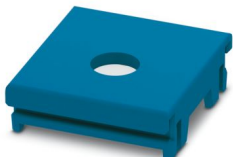


ICS25-F22A-5015 - Connection plate

1071642

<https://www.phoenixcontact.com/us/products/1071642>

DIN rail housing, ICS filler, with antenna function cutout, width: 25 mm, height: 7.25 mm, depth: 22.4 mm, color: blue (similar RAL 5015)



ICS50-B100X98-O-O-9005 - Mounting base housing



1118654

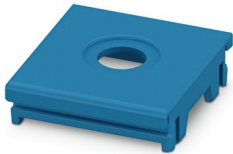
<https://www.phoenixcontact.com/us/products/1118654>

ICS25-F22A6-5015 - Connection plate

1287368

<https://www.phoenixcontact.com/us/products/1287368>

DIN rail housing, ICS filler, with antenna function cutout, width: 25 mm, height: 7.25 mm, depth: 22.4 mm, color: blue (similar RAL 5015)



ICS25-F22A6-1018 - Connection plate

1287366

<https://www.phoenixcontact.com/us/products/1287366>

DIN rail housing, ICS filler, with antenna function cutout, width: 25 mm, height: 7.25 mm, depth: 22.4 mm, color: yellow (similar RAL 1018)



ICS50-B100X98-O-O-9005 - Mounting base housing



1118654

<https://www.phoenixcontact.com/us/products/1118654>

ICS25-F22U-7035 - Connection plate

1053046

<https://www.phoenixcontact.com/us/products/1053046>

DIN rail housing, ICS filler, with USB function cutout, width: 25 mm, height: 7.25 mm, depth: 22.4 mm, color: light gray (similar RAL 7035)



ICS25-F22U-9005 - Connection plate

1072494

<https://www.phoenixcontact.com/us/products/1072494>

DIN rail housing, ICS filler, with USB function cutout, width: 25 mm, height: 7.25 mm, depth: 22.4 mm, color: black (similar RAL 9005)



ICS50-B100X98-O-O-9005 - Mounting base housing



1118654

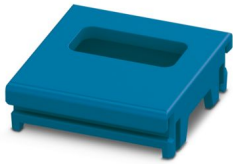
<https://www.phoenixcontact.com/us/products/1118654>

ICS25-F22U-5015 - Connection plate

1071629

<https://www.phoenixcontact.com/us/products/1071629>

DIN rail housing, ICS filler, with USB function cutout, width: 25 mm, height: 7.25 mm, depth: 22.4 mm, color: blue (similar RAL 5015)



ICS25-F22U-1018 - Connection plate

1287377

<https://www.phoenixcontact.com/us/products/1287377>

DIN rail housing, ICS filler, with USB function cutout, width: 25 mm, height: 7.25 mm, depth: 22.4 mm, color: yellow (similar RAL 1018)



ICS50-B100X98-O-O-9005 - Mounting base housing



1118654

<https://www.phoenixcontact.com/us/products/1118654>

CUC-COX-J1M-A/KBS - Coaxial PCB connector

1340153

<https://www.phoenixcontact.com/us/products/1340153>

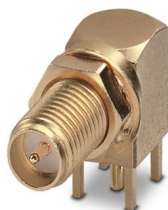


Coaxial PCB connector, degree of protection: IP20, number of positions: 2, 12 Gbps, material: Metal, connection method: Solder connection, cable outlet: straight, for additional information, see the product range drawing in the Download Center

CUC-COX-J1M-A/LBS - Coaxial PCB connector

1340152

<https://www.phoenixcontact.com/us/products/1340152>



Coaxial PCB connector, degree of protection: IP20, number of positions: 1, 12 Gbps, material: Metal, connection method: Solder connection, cable outlet: straight

ICS50-B100X98-O-O-9005 - Mounting base housing



1118654

<https://www.phoenixcontact.com/us/products/1118654>

CUC-USB2.0-J1ST-AH/UAF-THT - USB PCB connectors

1332631

<https://www.phoenixcontact.com/us/products/1332631>



USB PCB connectors, degree of protection: IP20, number of positions: 4, 480 Mbps, material: Metal, connection method: Solder connection, USB 2.0

CUC-USB2.0-J1ST-AH/UAF-SMD - USB PCB connectors

1332634

<https://www.phoenixcontact.com/us/products/1332634>



USB PCB connectors, degree of protection: IP20, number of positions: 4, 480 Mbps, material: Metal, connection method: Solder connection, USB 2.0

ICS50-B100X98-O-O-9005 - Mounting base housing

1118654

<https://www.phoenixcontact.com/us/products/1118654>



CUC-USB3.0-J1ST-AH/UAF-THT - USB PCB connectors

1332637

<https://www.phoenixcontact.com/us/products/1332637>



USB PCB connectors, degree of protection: IP20, number of positions: 9, 5
Gbps, material: Metal, connection method: Solder connection, USB 3.0

CUC-SP-J1ST-A/R4LB - RJ45 PCB connectors

1149868

<https://www.phoenixcontact.com/us/products/1149868>



RJ45 PCB connectors, degree of protection: IP20, number of positions: 8, 10
Gbps, material: Metal, connection method: THT wave

ICS50-B100X98-O-O-9005 - Mounting base housing



1118654

<https://www.phoenixcontact.com/us/products/1118654>

CUC-SP-J1ST-A/R4LB-LED - RJ45 PCB connectors

1149866

<https://www.phoenixcontact.com/us/products/1149866>



RJ45 PCB connectors, degree of protection: IP20, number of positions: 8, 10 Gbps, material: Metal, connection method: THT wave

VS-09-ST-DSUB-ER - Contact insert

1688382

<https://www.phoenixcontact.com/us/products/1688382>



D-SUB contact insert, shell size 1, with 9 signal contacts, type of contact pin, for PCB mounting, angled, fixing with M3 thread and solder pins, for panel mounting frame VS-09-...

ICS50-B100X98-O-O-9005 - Mounting base housing



1118654

<https://www.phoenixcontact.com/us/products/1118654>

VS-09-BU-DSUB-ER - Contact insert

1688405

<https://www.phoenixcontact.com/us/products/1688405>

D-SUB contact insert, shell size 1, with 9 signal contacts, type of contact socket, for PCB mounting, angled, fixing with M3 thread and solder pins, for panel mounting frame VS-09-...



VS-15-ST-DSUB-ER - Contact insert

1688081

<https://www.phoenixcontact.com/us/products/1688081>

D-SUB contact insert, shell size 2, with 15 signal contacts, type of contact pin, for PCB mounting, angled, fixing with M3 thread and solder pins, for panel mounting frame VS-15-...



ICS50-B100X98-O-O-9005 - Mounting base housing



1118654

<https://www.phoenixcontact.com/us/products/1118654>

VS-15-BU-DSUB-ER - Contact insert

1688120

<https://www.phoenixcontact.com/us/products/1688120>

D-SUB contact insert, shell size 2, with 15 signal contacts, type of contact socket, for PCB mounting, angled, fixing with M3 thread and solder pins, for panel mounting frame VS-15-...



ICC25-TP1,5/5L3,5-1018 - PCB terminal block

1477248

<https://www.phoenixcontact.com/us/products/1477248>



PCB terminal block, nominal current: 8 A, rated voltage (III/2): 150 V, nominal cross section: 1.5 mm², number of potentials: 5, number of rows: 1, number of positions per row: 5, product range: ICC...-TP1,5/..L3,5, pitch: 3.5 mm, connection method: Push-in spring connection, mounting: Wave soldering, conductor/PCB connection direction: 0 °, color: yellow, Pin layout: Linear pinning, number of solder pins per potential: 1, type of packaging: packed in cardboard. Product with pin output on left side

ICS50-B100X98-O-O-9005 - Mounting base housing



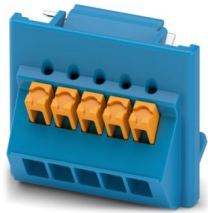
1118654

<https://www.phoenixcontact.com/us/products/1118654>

ICC25-TP1,5/5L3,5-5015 - PCB terminal block

1477246

<https://www.phoenixcontact.com/us/products/1477246>



PCB terminal block, nominal current: 8 A, rated voltage (III/2): 150 V, nominal cross section: 1.5 mm², number of potentials: 5, number of rows: 1, number of positions per row: 5, product range: ICC...-TP1,5/..L3,5, pitch: 3.5 mm, connection method: Push-in spring connection, mounting: Wave soldering, conductor/PCB connection direction: 0 °, color: blue, Pin layout: Linear pinning, number of solder pins per potential: 1, type of packaging: packed in cardboard. Product with pin output on left side

ICC25-TP1,5/5L3,5-7035 - PCB terminal block

1474497

<https://www.phoenixcontact.com/us/products/1474497>



PCB terminal block, nominal current: 8 A, rated voltage (III/2): 150 V, nominal cross section: 1.5 mm², number of potentials: 5, number of rows: 1, number of positions per row: 5, product range: ICC...-TP1,5/..L3,5, pitch: 3.5 mm, connection method: Push-in spring connection, mounting: Wave soldering, conductor/PCB connection direction: 0 °, color: light gray, Pin layout: Linear pinning, number of solder pins per potential: 1, type of packaging: packed in cardboard. Product with pin output on left side

ICS50-B100X98-O-O-9005 - Mounting base housing



1118654

<https://www.phoenixcontact.com/us/products/1118654>

ICC25-TP1,5/5L3,5-9005 - PCB terminal block

1477245

<https://www.phoenixcontact.com/us/products/1477245>



PCB terminal block, nominal current: 8 A, rated voltage (III/2): 150 V, nominal cross section: 1.5 mm², number of potentials: 5, number of rows: 1, number of positions per row: 5, product range: ICC...-TP1,5/..L3,5, pitch: 3.5 mm, connection method: Push-in spring connection, mounting: Wave soldering, conductor/PCB connection direction: 0 °, color: black, Pin layout: Linear pinning, number of solder pins per potential: 1, type of packaging: packed in cardboard. Product with pin output on left side

ICC25-TP1,5/5R3,5-1018 - PCB terminal block

1477331

<https://www.phoenixcontact.com/us/products/1477331>



PCB terminal block, nominal current: 8 A, rated voltage (III/2): 150 V, nominal cross section: 1.5 mm², number of potentials: 5, number of rows: 1, number of positions per row: 5, product range: ICC...-TP1,5/..R3,5, pitch: 3.5 mm, connection method: Push-in spring connection, mounting: Wave soldering, conductor/PCB connection direction: 0 °, color: yellow, Pin layout: Linear pinning, number of solder pins per potential: 1, type of packaging: packed in cardboard. Product with pin output on right side

ICS50-B100X98-O-O-9005 - Mounting base housing



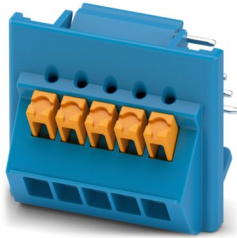
1118654

<https://www.phoenixcontact.com/us/products/1118654>

ICC25-TP1,5/5R3,5-5015 - PCB terminal block

1477330

<https://www.phoenixcontact.com/us/products/1477330>



PCB terminal block, nominal current: 8 A, rated voltage (III/2): 150 V, nominal cross section: 1.5 mm², number of potentials: 5, number of rows: 1, number of positions per row: 5, product range: ICC...-TP1,5/..R3,5, pitch: 3.5 mm, connection method: Push-in spring connection, mounting: Wave soldering, conductor/PCB connection direction: 0 °, color: blue, Pin layout: Linear pinning, number of solder pins per potential: 1, type of packaging: packed in cardboard. Product with pin output on right side

ICC25-TP1,5/5R3,5-7035 - PCB terminal block

1474499

<https://www.phoenixcontact.com/us/products/1474499>



PCB terminal block, nominal current: 8 A, rated voltage (III/2): 150 V, nominal cross section: 1.5 mm², number of potentials: 5, number of rows: 1, number of positions per row: 5, product range: ICC...-TP1,5/..R3,5, pitch: 3.5 mm, connection method: Push-in spring connection, mounting: Wave soldering, conductor/PCB connection direction: 0 °, color: light gray, Pin layout: Linear pinning, Solder pin [P]: 2.8 mm, number of solder pins per potential: 1, type of packaging: packed in cardboard. Product with pin output on right side

ICS50-B100X98-O-O-9005 - Mounting base housing



1118654

<https://www.phoenixcontact.com/us/products/1118654>

ICC25-TP1,5/5R3,5-9005 - PCB terminal block

1477328

<https://www.phoenixcontact.com/us/products/1477328>



PCB terminal block, nominal current: 8 A, rated voltage (III/2): 150 V, nominal cross section: 1.5 mm², number of potentials: 5, number of rows: 1, number of positions per row: 5, product range: ICC...-TP1,5/..R3,5, pitch: 3.5 mm, connection method: Push-in spring connection, mounting: Wave soldering, conductor/PCB connection direction: 0 °, color: black, Pin layout: Linear pinning, number of solder pins per potential: 1, type of packaging: packed in cardboard. Product with pin output on right side

ICC25-TP2,5/4L5,0-1018 - PCB terminal block

1477323

<https://www.phoenixcontact.com/us/products/1477323>



PCB terminal block, nominal current: 18 A, rated voltage (III/2): 300 V, nominal cross section: 2.5 mm², number of potentials: 4, number of rows: 1, number of positions per row: 4, product range: ICC...-TP2,5/..L5,0, pitch: 5 mm, connection method: Push-in spring connection, mounting: Wave soldering, conductor/PCB connection direction: 0 °, color: yellow, Pin layout: Linear pinning, number of solder pins per potential: 1, type of packaging: packed in cardboard. Product with pin output on left side

ICS50-B100X98-O-O-9005 - Mounting base housing



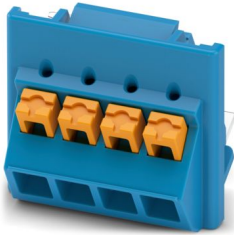
1118654

<https://www.phoenixcontact.com/us/products/1118654>

ICC25-TP2,5/4L5,0-5015 - PCB terminal block

1477322

<https://www.phoenixcontact.com/us/products/1477322>



PCB terminal block, nominal current: 18 A, rated voltage (III/2): 300 V, nominal cross section: 2.5 mm², number of potentials: 4, number of rows: 1, number of positions per row: 4, product range: ICC...-TP2,5/..L5,0, pitch: 5 mm, connection method: Push-in spring connection, mounting: Wave soldering, conductor/PCB connection direction: 0 °, color: blue, Pin layout: Linear pinning, number of solder pins per potential: 1, type of packaging: packed in cardboard. Product with pin output on left side

ICC25-TP2,5/4L5,0-7035 - PCB terminal block

1474487

<https://www.phoenixcontact.com/us/products/1474487>



PCB terminal block, nominal current: 18 A, rated voltage (III/2): 300 V, nominal cross section: 2.5 mm², number of potentials: 4, number of rows: 1, number of positions per row: 4, product range: ICC...-TP2,5/..L5,0, pitch: 5 mm, connection method: Push-in spring connection, mounting: Wave soldering, conductor/PCB connection direction: 0 °, color: light gray, Pin layout: Linear pinning, number of solder pins per potential: 1, type of packaging: packed in cardboard. Product with pin output on left side

ICS50-B100X98-O-O-9005 - Mounting base housing



1118654

<https://www.phoenixcontact.com/us/products/1118654>

ICC25-TP2,5/4L5,0-9005 - PCB terminal block

1477321

<https://www.phoenixcontact.com/us/products/1477321>

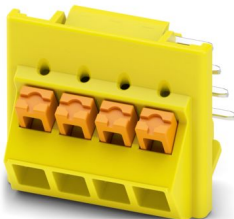


PCB terminal block, nominal current: 18 A, rated voltage (III/2): 300 V, nominal cross section: 2.5 mm², number of potentials: 4, number of rows: 1, number of positions per row: 4, product range: ICC...-TP2,5/..L5,0, pitch: 5 mm, connection method: Push-in spring connection, mounting: Wave soldering, conductor/PCB connection direction: 0 °, color: black, Pin layout: Linear pinning, number of solder pins per potential: 1, type of packaging: packed in cardboard. Product with pin output on left side

ICC25-TP2,5/4R5,0-1018 - PCB terminal block

1477327

<https://www.phoenixcontact.com/us/products/1477327>



PCB terminal block, nominal current: 18 A, rated voltage (III/2): 300 V, nominal cross section: 2.5 mm², number of potentials: 4, number of rows: 1, number of positions per row: 4, product range: ICC...-TP2,5/..R5,0, pitch: 5 mm, connection method: Push-in spring connection, mounting: Wave soldering, conductor/PCB connection direction: 0 °, color: yellow, Pin layout: Linear pinning, number of solder pins per potential: 1, type of packaging: packed in cardboard. Product with pin output on right side

ICS50-B100X98-O-O-9005 - Mounting base housing



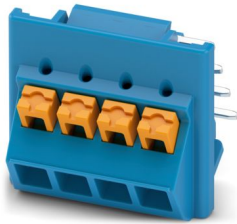
1118654

<https://www.phoenixcontact.com/us/products/1118654>

ICC25-TP2,5/4R5,0-5015 - PCB terminal block

1477325

<https://www.phoenixcontact.com/us/products/1477325>



PCB terminal block, nominal current: 18 A, rated voltage (III/2): 300 V, nominal cross section: 2.5 mm², number of potentials: 4, number of rows: 1, number of positions per row: 4, product range: ICC...-TP2,5/..R5,0, pitch: 5 mm, connection method: Push-in spring connection, mounting: Wave soldering, conductor/PCB connection direction: 0 °, color: blue, Pin layout: Linear pinning, number of solder pins per potential: 1, type of packaging: packed in cardboard. Product with pin output on right side

ICC25-TP2,5/4R5,0-7035 - PCB terminal block

1474491

<https://www.phoenixcontact.com/us/products/1474491>



PCB terminal block, nominal current: 18 A, rated voltage (III/2): 300 V, nominal cross section: 2.5 mm², number of potentials: 4, number of rows: 1, number of positions per row: 4, product range: ICC...-TP2,5/..R5,0, pitch: 5 mm, connection method: Push-in spring connection, mounting: Wave soldering, conductor/PCB connection direction: 0 °, color: light gray, Pin layout: Linear pinning, number of solder pins per potential: 1, type of packaging: packed in cardboard. Product with pin output on right side

ICS50-B100X98-O-O-9005 - Mounting base housing



1118654

<https://www.phoenixcontact.com/us/products/1118654>

ICC25-TP2,5/4R5,0-9005 - PCB terminal block

1477324

<https://www.phoenixcontact.com/us/products/1477324>



PCB terminal block, nominal current: 18 A, rated voltage (III/2): 300 V, nominal cross section: 2.5 mm², number of potentials: 4, number of rows: 1, number of positions per row: 4, product range: ICC...-TP2,5/..R5,0, pitch: 5 mm, connection method: Push-in spring connection, mounting: Wave soldering, conductor/PCB connection direction: 0 °, color: black, Pin layout: Linear pinning, number of solder pins per potential: 1, type of packaging: packed in cardboard. Product with pin output on right side

ICC25-TS1,5/5L3,5-1018 - PCB terminal block

1380328

<https://www.phoenixcontact.com/us/products/1380328>



PCB terminal block, nominal current: 16 A, rated voltage (III/2): 150 V, nominal cross section: 1.5 mm², number of potentials: 5, number of rows: 1, number of positions per row: 5, product range: ICC...-TS1,5/..L3,5, pitch: 3.5 mm, connection method: Screw connection with tension sleeve, screw head form: L Slotted, mounting: Wave soldering, conductor/PCB connection direction: 0 °, color: yellow, Pin layout: Linear pinning, number of solder pins per potential: 1, type of packaging: packed in cardboard. Product with pin output on left side

ICS50-B100X98-O-O-9005 - Mounting base housing



1118654

<https://www.phoenixcontact.com/us/products/1118654>

ICC25-TS1,5/5L3,5-5015 - PCB terminal block

1380316

<https://www.phoenixcontact.com/us/products/1380316>



PCB terminal block, nominal current: 16 A, rated voltage (III/2): 150 V, nominal cross section: 1.5 mm², number of potentials: 5, number of rows: 1, number of positions per row: 5, product range: ICC...-TS1,5/..L3,5, pitch: 3.5 mm, connection method: Screw connection with tension sleeve, screw head form: L Slotted, mounting: Wave soldering, conductor/PCB connection direction: 0 °, color: blue, Pin layout: Linear pinning, number of solder pins per potential: 1, type of packaging: packed in cardboard. Product with pin output on left side

ICC25-TS1,5/5L3,5-7035 - PCB terminal block

1380295

<https://www.phoenixcontact.com/us/products/1380295>



PCB terminal block, nominal current: 16 A, rated voltage (III/2): 150 V, nominal cross section: 1.5 mm², number of potentials: 5, number of rows: 1, number of positions per row: 5, product range: ICC...-TS1,5/..L3,5, pitch: 3.5 mm, connection method: Screw connection with tension sleeve, screw head form: L Slotted, mounting: Wave soldering, conductor/PCB connection direction: 0 °, color: light gray, Pin layout: Linear pinning, number of solder pins per potential: 1, type of packaging: packed in cardboard. Product with pin output on left side

ICS50-B100X98-O-O-9005 - Mounting base housing



1118654

<https://www.phoenixcontact.com/us/products/1118654>

ICC25-TS1,5/5L3,5-9005 - PCB terminal block

1380308

<https://www.phoenixcontact.com/us/products/1380308>



PCB terminal block, nominal current: 16 A, rated voltage (III/2): 150 V, nominal cross section: 1.5 mm², number of potentials: 5, number of rows: 1, number of positions per row: 5, product range: ICC...-TS1,5/..L3,5, pitch: 3.5 mm, connection method: Screw connection with tension sleeve, screw head form: L Slotted, mounting: Wave soldering, conductor/PCB connection direction: 0 °, color: black, Pin layout: Linear pinning, number of solder pins per potential: 1, type of packaging: packed in cardboard. Product with pin output on left side

ICC25-TS1,5/5R3,5-1018 - PCB terminal block

1380329

<https://www.phoenixcontact.com/us/products/1380329>



PCB terminal block, nominal current: 16 A, rated voltage (III/2): 150 V, nominal cross section: 1.5 mm², number of potentials: 5, number of rows: 1, number of positions per row: 5, product range: ICC...-TS1,5/..R3,5, pitch: 3.5 mm, connection method: Screw connection with tension sleeve, screw head form: L Slotted, mounting: Wave soldering, conductor/PCB connection direction: 0 °, color: yellow, Pin layout: Linear pinning, number of solder pins per potential: 1, type of packaging: packed in cardboard. Product with pin output on right side

ICS50-B100X98-O-O-9005 - Mounting base housing



1118654

<https://www.phoenixcontact.com/us/products/1118654>

ICC25-TS1,5/5R3,5-5015 - PCB terminal block

1380317

<https://www.phoenixcontact.com/us/products/1380317>

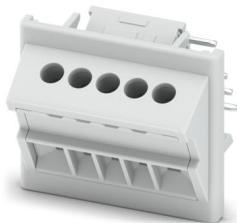


PCB terminal block, nominal current: 16 A, rated voltage (III/2): 150 V, nominal cross section: 1.5 mm², number of potentials: 5, number of rows: 1, number of positions per row: 5, product range: ICC...-TS1,5/..R3,5, pitch: 3.5 mm, connection method: Screw connection with tension sleeve, screw head form: L Slotted, mounting: Wave soldering, conductor/PCB connection direction: 0 °, color: blue, Pin layout: Linear pinning, number of solder pins per potential: 1, type of packaging: packed in cardboard. Product with pin output on right side

ICC25-TS1,5/5R3,5-7035 - PCB terminal block

1380298

<https://www.phoenixcontact.com/us/products/1380298>



PCB terminal block, nominal current: 16 A, rated voltage (III/2): 150 V, nominal cross section: 1.5 mm², number of potentials: 5, number of rows: 1, number of positions per row: 5, product range: ICC...-TS1,5/..R3,5, pitch: 3.5 mm, connection method: Screw connection with tension sleeve, screw head form: L Slotted, mounting: Wave soldering, conductor/PCB connection direction: 0 °, color: light gray, Pin layout: Linear pinning, number of solder pins per potential: 1, type of packaging: packed in cardboard. Product with pin output on right side

ICS50-B100X98-O-O-9005 - Mounting base housing



1118654

<https://www.phoenixcontact.com/us/products/1118654>

ICC25-TS1,5/5R3,5-9005 - PCB terminal block

1380309

<https://www.phoenixcontact.com/us/products/1380309>



PCB terminal block, nominal current: 16 A, rated voltage (III/2): 150 V, nominal cross section: 1.5 mm², number of potentials: 5, number of rows: 1, number of positions per row: 5, product range: ICC...-TS1,5/..R3,5, pitch: 3.5 mm, connection method: Screw connection with tension sleeve, screw head form: L Slotted, mounting: Wave soldering, conductor/PCB connection direction: 0 °, color: black, Pin layout: Linear pinning, number of solder pins per potential: 1, type of packaging: packed in cardboard. Product with pin output on right side

ICC25-TS2,5/4L5,0-1018 - PCB terminal block

1380324

<https://www.phoenixcontact.com/us/products/1380324>



PCB terminal block, nominal current: 24 A, rated voltage (III/2): 300 V, nominal cross section: 2.5 mm², number of potentials: 4, number of rows: 1, number of positions per row: 4, product range: ICC...-TS2,5/..L5,0, pitch: 5 mm, connection method: Screw connection with tension sleeve, screw head form: H1L Slotted Phillips recess, mounting: Wave soldering, conductor/PCB connection direction: 0 °, color: yellow, Pin layout: Linear pinning, number of solder pins per potential: 1, type of packaging: packed in cardboard. Product with pin output on left side

ICS50-B100X98-O-O-9005 - Mounting base housing



1118654

<https://www.phoenixcontact.com/us/products/1118654>

ICC25-TS2,5/4L5,0-5015 - PCB terminal block

1380314

<https://www.phoenixcontact.com/us/products/1380314>



PCB terminal block, nominal current: 24 A, rated voltage (III/2): 300 V, nominal cross section: 2.5 mm², number of potentials: 4, number of rows: 1, number of positions per row: 4, product range: ICC...-TS2,5/..L5,0, pitch: 5 mm, connection method: Screw connection with tension sleeve, screw head form: H1L Slotted Phillips recess, mounting: Wave soldering, conductor/PCB connection direction: 0 °, color: blue, Pin layout: Linear pinning, number of solder pins per potential: 1, type of packaging: packed in cardboard. Product with pin output on left side

ICC25-TS2,5/4L5,0-7035 - PCB terminal block

1380293

<https://www.phoenixcontact.com/us/products/1380293>



PCB terminal block, nominal current: 24 A, rated voltage (III/2): 300 V, nominal cross section: 2.5 mm², number of potentials: 4, number of rows: 1, number of positions per row: 4, product range: ICC...-TS2,5/..L5,0, pitch: 5 mm, connection method: Screw connection with tension sleeve, screw head form: H1L Slotted Phillips recess, mounting: Wave soldering, conductor/PCB connection direction: 0 °, color: light gray, Pin layout: Linear pinning, number of solder pins per potential: 1, type of packaging: packed in cardboard. Product with pin output on left side

ICS50-B100X98-O-O-9005 - Mounting base housing



1118654

<https://www.phoenixcontact.com/us/products/1118654>

ICC25-TS2,5/4L5,0-9005 - PCB terminal block

1380305

<https://www.phoenixcontact.com/us/products/1380305>



PCB terminal block, nominal current: 24 A, rated voltage (III/2): 300 V, nominal cross section: 2.5 mm², number of potentials: 4, number of rows: 1, number of positions per row: 4, product range: ICC...-TS2,5/..L5,0, pitch: 5 mm, connection method: Screw connection with tension sleeve, screw head form: H1L Slotted Phillips recess, mounting: Wave soldering, conductor/PCB connection direction: 0 °, color: black, Pin layout: Linear pinning, number of solder pins per potential: 1, type of packaging: packed in cardboard. Product with pin output on left side

ICC25-TS2,5/4R5,0-1018 - PCB terminal block

1380326

<https://www.phoenixcontact.com/us/products/1380326>



PCB terminal block, nominal current: 24 A, rated voltage (III/2): 300 V, nominal cross section: 2.5 mm², number of potentials: 4, number of rows: 1, number of positions per row: 4, product range: ICC...-TS2,5/..R5,0, pitch: 5 mm, connection method: Screw connection with tension sleeve, screw head form: H1L Slotted Phillips recess, mounting: Wave soldering, conductor/PCB connection direction: 0 °, color: yellow, Pin layout: Linear pinning, number of solder pins per potential: 1, type of packaging: packed in cardboard. Product with pin output on right side

ICS50-B100X98-O-O-9005 - Mounting base housing



1118654

<https://www.phoenixcontact.com/us/products/1118654>

ICC25-TS2,5/4R5,0-5015 - PCB terminal block

1380315

<https://www.phoenixcontact.com/us/products/1380315>

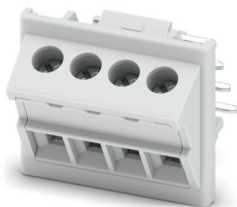


PCB terminal block, nominal current: 24 A, rated voltage (III/2): 300 V, nominal cross section: 2.5 mm², number of potentials: 4, number of rows: 1, number of positions per row: 4, product range: ICC...-TS2,5/..R5,0, pitch: 5 mm, connection method: Screw connection with tension sleeve, screw head form: H1L Slotted Phillips recess, mounting: Wave soldering, conductor/PCB connection direction: 0 °, color: blue, Pin layout: Linear pinning, number of solder pins per potential: 1, type of packaging: packed in cardboard. Product with pin output on right side

ICC25-TS2,5/4R5,0-7035 - PCB terminal block

1380294

<https://www.phoenixcontact.com/us/products/1380294>



PCB terminal block, nominal current: 24 A, rated voltage (III/2): 300 V, nominal cross section: 2.5 mm², number of potentials: 4, number of rows: 1, number of positions per row: 4, product range: ICC...-TS2,5/..R5,0, pitch: 5 mm, connection method: Screw connection with tension sleeve, screw head form: H1L Slotted Phillips recess, mounting: Wave soldering, conductor/PCB connection direction: 0 °, color: light gray, Pin layout: Linear pinning, number of solder pins per potential: 1, type of packaging: packed in cardboard. Product with pin output on right side

ICS50-B100X98-O-O-9005 - Mounting base housing



1118654

<https://www.phoenixcontact.com/us/products/1118654>

ICC25-TS2,5/4R5,0-9005 - PCB terminal block

1380306

<https://www.phoenixcontact.com/us/products/1380306>



PCB terminal block, nominal current: 24 A, rated voltage (III/2): 300 V, nominal cross section: 2.5 mm², number of potentials: 4, number of rows: 1, number of positions per row: 4, product range: ICC...-TS2,5/..R5,0, pitch: 5 mm, connection method: Screw connection with tension sleeve, screw head form: H1L Slotted Phillips recess, mounting: Wave soldering, conductor/PCB connection direction: 0 °, color: black, Pin layout: Linear pinning, number of solder pins per potential: 1, type of packaging: packed in cardboard. Product with pin output on right side

ICC25-H/4L5,0-1018 - PCB header

1112639

<https://www.phoenixcontact.com/us/products/1112639>



PCB headers, nominal cross section: 2.5 mm², color: yellow, nominal current: 16 A, rated voltage (III/2): 320 V, contact surface: Sn, contact connection type: Pin, number of potentials: 4, number of rows: 1, number of positions: 4, number of connections: 4, product range: ICC...-H/..L5,0, pitch: 5 mm, mounting: Wave soldering, pin layout: Linear pinning, solder pin [P]: 3.5 mm, number of solder pins per potential: 1, Pin connector pattern alignment: Standard, locking: Snap-in locking, mounting: without, type of packaging: Box packaging, Product with pin output on left side

ICS50-B100X98-O-O-9005 - Mounting base housing



1118654

<https://www.phoenixcontact.com/us/products/1118654>

ICC25-H/4L5,0-5015 - PCB header

1071451

<https://www.phoenixcontact.com/us/products/1071451>



PCB headers, nominal cross section: 2.5 mm², color: blue, nominal current: 16 A, rated voltage (III/2): 320 V, contact surface: Sn, contact connection type: Pin, number of potentials: 4, number of rows: 1, number of positions: 4, number of connections: 4, product range: ICC...-H/...L5,0, pitch: 5 mm, mounting: Wave soldering, pin layout: Linear pinning, solder pin [P]: 3.5 mm, number of solder pins per potential: 1, Pin connector pattern alignment: Standard, locking: Snap-in locking, mounting: without, type of packaging: Box packaging, Product with pin output on left side

ICC25-H/4L5,0-6021 - PCB header

1207794

<https://www.phoenixcontact.com/us/products/1207794>



PCB headers, nominal cross section: 2.5 mm², color: green, nominal current: 16 A, rated voltage (III/2): 320 V, contact surface: Sn, contact connection type: Pin, number of potentials: 4, number of rows: 1, number of positions: 4, number of connections: 4, product range: ICC...-H/...L5,0, pitch: 5 mm, mounting: Wave soldering, pin layout: Linear pinning, solder pin [P]: 3.5 mm, number of solder pins per potential: 1, Pin connector pattern alignment: Standard, locking: Snap-in locking, mounting: without, type of packaging: Box packaging, Product with pin output on left side

ICS50-B100X98-O-O-9005 - Mounting base housing



1118654

<https://www.phoenixcontact.com/us/products/1118654>

ICC25-H/4L5,0-7035 - PCB header

2203902

<https://www.phoenixcontact.com/us/products/2203902>



PCB headers, nominal cross section: 2.5 mm², color: light gray, nominal current: 16 A, rated voltage (III/2): 320 V, contact surface: Sn, contact connection type: Pin, number of potentials: 4, number of rows: 1, number of positions: 4, number of connections: 4, product range: ICC...-H/...L5,0, pitch: 5 mm, mounting: Wave soldering, pin layout: Linear pinning, solder pin [P]: 3.5 mm, number of solder pins per potential: 1, Pin connector pattern alignment: Standard, locking: Snap-in locking, mounting: without, type of packaging: Box packaging, Product with pin output on left side

ICC25-H/4L5,0-9005 - PCB header

1072486

<https://www.phoenixcontact.com/us/products/1072486>



PCB headers, nominal cross section: 2.5 mm², color: black, nominal current: 16 A, rated voltage (III/2): 320 V, contact surface: Sn, contact connection type: Pin, number of potentials: 4, number of rows: 1, number of positions: 4, number of connections: 4, product range: ICC...-H/...L5,0, pitch: 5 mm, mounting: Wave soldering, pin layout: Linear pinning, solder pin [P]: 3.5 mm, number of solder pins per potential: 1, Pin connector pattern alignment: Standard, locking: Snap-in locking, mounting: without, type of packaging: Box packaging, Product with pin output on left side

ICS50-B100X98-O-O-9005 - Mounting base housing



1118654

<https://www.phoenixcontact.com/us/products/1118654>

ICC25-H/4R5,0-1018 - PCB header

1112640

<https://www.phoenixcontact.com/us/products/1112640>



PCB headers, nominal cross section: 2.5 mm², color: yellow, nominal current: 16 A, rated voltage (III/2): 320 V, contact surface: Sn, contact connection type: Pin, number of potentials: 4, number of rows: 1, number of positions: 4, number of connections: 4, product range: ICC...-H/...R5,0, pitch: 5 mm, mounting: Wave soldering, pin layout: Linear pinning, solder pin [P]: 3.5 mm, number of solder pins per potential: 1, Pin connector pattern alignment: Standard, locking: Snap-in locking, mounting: without, type of packaging: Box packaging, Product with pin output on right side

ICC25-H/4R5,0-5015 - PCB header

1071449

<https://www.phoenixcontact.com/us/products/1071449>



PCB headers, nominal cross section: 2.5 mm², color: blue, nominal current: 16 A, rated voltage (III/2): 320 V, contact surface: Sn, contact connection type: Pin, number of potentials: 4, number of rows: 1, number of positions: 4, number of connections: 4, product range: ICC...-H/...R5,0, pitch: 5 mm, mounting: Wave soldering, pin layout: Linear pinning, solder pin [P]: 3.5 mm, number of solder pins per potential: 1, Pin connector pattern alignment: Standard, locking: Snap-in locking, mounting: without, type of packaging: Box packaging, Product with pin output on right side

ICS50-B100X98-O-O-9005 - Mounting base housing



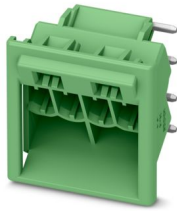
1118654

<https://www.phoenixcontact.com/us/products/1118654>

ICC25-H/4R5,0-6021 - PCB header

1475131

<https://www.phoenixcontact.com/us/products/1475131>



PCB headers, nominal cross section: 2.5 mm², color: green, nominal current: 16 A, rated voltage (III/2): 320 V, contact surface: Sn, contact connection type: Pin, number of potentials: 4, number of rows: 1, number of positions: 4, number of connections: 4, product range: ICC...-H/...R5,0, pitch: 5 mm, mounting: Wave soldering, pin layout: Linear pinning, solder pin [P]: 3.5 mm, number of solder pins per potential: 1, Pin connector pattern alignment: Standard, locking: Snap-in locking, mounting: without, type of packaging: Box packaging, Product with pin output on right side

ICC25-H/4R5,0-7035 - PCB header

2203903

<https://www.phoenixcontact.com/us/products/2203903>



PCB headers, nominal cross section: 2.5 mm², color: light gray, nominal current: 16 A, rated voltage (III/2): 320 V, contact surface: Sn, contact connection type: Pin, number of potentials: 4, number of rows: 1, number of positions: 4, number of connections: 4, product range: ICC...-H/...R5,0, pitch: 5 mm, mounting: Wave soldering, pin layout: Linear pinning, solder pin [P]: 3.5 mm, number of solder pins per potential: 1, Pin connector pattern alignment: Standard, locking: Snap-in locking, mounting: without, type of packaging: Box packaging, Product with pin output on right side

ICS50-B100X98-O-O-9005 - Mounting base housing



1118654

<https://www.phoenixcontact.com/us/products/1118654>

ICC25-H/4R5,0-9005 - PCB header

1072485

<https://www.phoenixcontact.com/us/products/1072485>



PCB headers, nominal cross section: 2.5 mm², color: black, nominal current: 16 A, rated voltage (III/2): 320 V, contact surface: Sn, contact connection type: Pin, number of potentials: 4, number of rows: 1, number of positions: 4, number of connections: 4, product range: ICC...-H/...R5,0, pitch: 5 mm, mounting: Wave soldering, pin layout: Linear pinning, solder pin [P]: 3.5 mm, number of solder pins per potential: 1, Pin connector pattern alignment: Standard, locking: Snap-in locking, mounting: without, type of packaging: Box packaging, Product with pin output on right side

ICC25-H/5L3,5-1018 - PCB header

1357417

<https://www.phoenixcontact.com/us/products/1357417>



PCB headers, color: yellow, nominal current: 8 A, rated voltage (III/2): 150 V, contact surface: Sn, contact connection type: Pin, number of potentials: 5, number of rows: 1, number of positions: 5, number of connections: 5, product range: ICC...-H/...L3,5, pitch: 3.5 mm, mounting: Wave soldering, pin layout: Linear pinning, solder pin [P]: 2.8 mm, number of solder pins per potential: 1, Pin connector pattern alignment: Standard, locking: Snap-in locking, mounting: without, type of packaging: Box packaging, Product with pin output on left side

ICS50-B100X98-O-O-9005 - Mounting base housing



1118654

<https://www.phoenixcontact.com/us/products/1118654>

ICC25-H/5L3,5-5015 - PCB header

1522853

<https://www.phoenixcontact.com/us/products/1522853>



PCB headers, color: blue, nominal current: 8 A, rated voltage (III/2): 150 V, contact surface: Sn, contact connection type: Pin, number of potentials: 5, number of rows: 1, number of positions: 5, number of connections: 5, product range: ICC...-H/...L3,5, pitch: 3.5 mm, mounting: Wave soldering, pin layout: Linear pinning, solder pin [P]: 2.8 mm, number of solder pins per potential: 1, Pin connector pattern alignment: Standard, locking: Snap-in locking, mounting: without, type of packaging: Box packaging, Product with pin output on left side

ICC25-H/5L3,5-7035 - PCB header

1084018

<https://www.phoenixcontact.com/us/products/1084018>



PCB headers, color: light gray, nominal current: 8 A, rated voltage (III/2): 150 V, contact surface: Sn, contact connection type: Pin, number of potentials: 5, number of rows: 1, number of positions: 5, number of connections: 5, product range: ICC...-H/...L3,5, pitch: 3.5 mm, mounting: Wave soldering, pin layout: Linear pinning, solder pin [P]: 2.8 mm, number of solder pins per potential: 1, Pin connector pattern alignment: Standard, locking: Snap-in locking, mounting: without, type of packaging: Box packaging, Product with pin output on left side

ICS50-B100X98-O-O-9005 - Mounting base housing



1118654

<https://www.phoenixcontact.com/us/products/1118654>

ICC25-H/5L3,5-9005 - PCB header

1524091

<https://www.phoenixcontact.com/us/products/1524091>

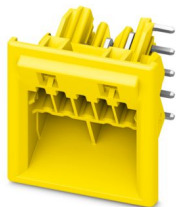


PCB headers, color: black, nominal current: 8 A, rated voltage (III/2): 150 V, contact surface: Sn, contact connection type: Pin, number of potentials: 5, number of rows: 1, number of positions: 5, number of connections: 5, product range: ICC...-H/...L3,5, pitch: 3.5 mm, mounting: Wave soldering, pin layout: Linear pinning, solder pin [P]: 2.8 mm, number of solder pins per potential: 1, Pin connector pattern alignment: Standard, locking: Snap-in locking, mounting: without, type of packaging: Box packaging, Product with pin output on left side

ICC25-H/5R3,5-1018 - PCB header

1357416

<https://www.phoenixcontact.com/us/products/1357416>



PCB headers, color: yellow, nominal current: 8 A, rated voltage (III/2): 150 V, contact surface: Sn, contact connection type: Pin, number of potentials: 5, number of rows: 1, number of positions: 5, number of connections: 5, product range: ICC...-H/...R3,5, pitch: 3.5 mm, mounting: Wave soldering, pin layout: Linear pinning, solder pin [P]: 2.8 mm, number of solder pins per potential: 1, Pin connector pattern alignment: Standard, locking: Snap-in locking, mounting: without, type of packaging: Box packaging, Product with pin output on right side

ICS50-B100X98-O-O-9005 - Mounting base housing



1118654

<https://www.phoenixcontact.com/us/products/1118654>

ICC25-H/5R3,5-5015 - PCB header

1643166

<https://www.phoenixcontact.com/us/products/1643166>

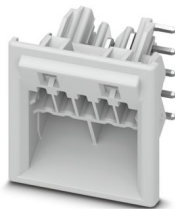


PCB headers, color: blue, nominal current: 8 A, rated voltage (III/2): 150 V, contact surface: Sn, contact connection type: Pin, number of potentials: 5, number of rows: 1, number of positions: 5, number of connections: 5, product range: ICC...-H/...R3,5, pitch: 3.5 mm, mounting: Wave soldering, pin layout: Linear pinning, solder pin [P]: 2.8 mm, number of solder pins per potential: 1, Pin connector pattern alignment: Standard, locking: Snap-in locking, mounting: without, type of packaging: Box packaging, Product with pin output on right side

ICC25-H/5R3,5-7035 - PCB header

1084017

<https://www.phoenixcontact.com/us/products/1084017>



PCB headers, color: light gray, nominal current: 8 A, rated voltage (III/2): 150 V, contact surface: Sn, contact connection type: Pin, number of potentials: 5, number of rows: 1, number of positions: 5, number of connections: 5, product range: ICC...-H/...R3,5, pitch: 3.5 mm, mounting: Wave soldering, pin layout: Linear pinning, solder pin [P]: 2.8 mm, number of solder pins per potential: 1, Pin connector pattern alignment: Standard, locking: Snap-in locking, mounting: without, type of packaging: Box packaging, Product with pin output on right side

ICS50-B100X98-O-O-9005 - Mounting base housing



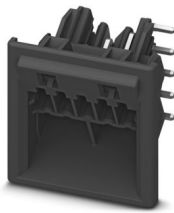
1118654

<https://www.phoenixcontact.com/us/products/1118654>

ICC25-H/5R3,5-9005 - PCB header

1524100

<https://www.phoenixcontact.com/us/products/1524100>

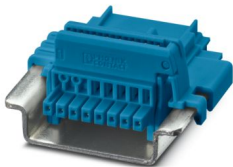


PCB headers, color: black, nominal current: 8 A, rated voltage (III/2): 150 V, contact surface: Sn, contact connection type: Pin, number of potentials: 5, number of rows: 1, number of positions: 5, number of connections: 5, product range: ICC...-H/...R3,5, pitch: 3.5 mm, mounting: Wave soldering, pin layout: Linear pinning, solder pin [P]: 2.8 mm, number of solder pins per potential: 1, Pin connector pattern alignment: Standard, locking: Snap-in locking, mounting: without, type of packaging: Box packaging, Product with pin output on right side

TBUS8-25,0-PPPPPPPP-5015 - DIN rail bus connectors

1071426

<https://www.phoenixcontact.com/us/products/1071426>



DIN rail connector, color: blue, nominal current: 6 A (parallel contacts), rated voltage (III/2): 32 V, number of positions: 8, product range: TBUS8-25..., pitch: 2.54 mm, mounting: DIN rail mounting, locking: without, mounting: without, type of packaging: packed in cardboard, Item with gold-plated contacts, bus connectors for connecting with electronics housings, 8 parallel contacts

ICS50-B100X98-O-O-9005 - Mounting base housing



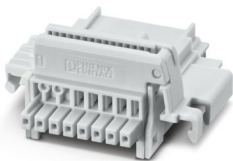
1118654

<https://www.phoenixcontact.com/us/products/1118654>

TBUS8-25,0-PPPPPPPP-7035 - DIN rail bus connectors

2202891

<https://www.phoenixcontact.com/us/products/2202891>



DIN rail connector, color: light gray, nominal current: 6 A (parallel contacts), rated voltage (III/2): 32 V, number of positions: 8, product range: TBUS8-25..., pitch: 2.54 mm, mounting: DIN rail mounting, locking: without, mounting: without, type of packaging: packed in cardboard, Item with gold-plated contacts, bus connectors for connecting with electronics housings, 8 parallel contacts

TBUS8-25,0-PPPPPPPP-9005 - DIN rail bus connectors

1072478

<https://www.phoenixcontact.com/us/products/1072478>



DIN rail connector, color: black, nominal current: 6 A (parallel contacts), rated voltage (III/2): 32 V, number of positions: 8, product range: TBUS8-25..., pitch: 2.54 mm, mounting: DIN rail mounting, locking: without, mounting: without, type of packaging: packed in cardboard, Item with gold-plated contacts, bus connectors for connecting with electronics housings, 8 parallel contacts

ICS50-B100X98-O-O-9005 - Mounting base housing



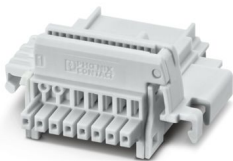
1118654

<https://www.phoenixcontact.com/us/products/1118654>

TBUS8-25,0-PPPPPPPS-7035 - DIN rail bus connectors

2202890

<https://www.phoenixcontact.com/us/products/2202890>

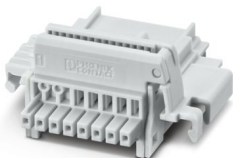


DIN rail connector, color: light gray, nominal current: 6 A, 4 A (parallel contacts) (Serial contacts), rated voltage (III/2): 32 V, number of positions: 8, product range: TBUS8-25..., pitch: 2.54 mm, mounting: DIN rail mounting, locking: without, mounting: without, type of packaging: packed in cardboard, Item with gold-plated contacts, bus connectors for connecting with electronics housings, 7 parallel contacts/1 serial contact

TBUS8-25,0-PPPPPPPS-7035VPE100 - DIN rail bus connectors

1442879

<https://www.phoenixcontact.com/us/products/1442879>



DIN rail connector, color: light gray, nominal current: 6 A, 4 A (parallel contacts) (Serial contacts), rated voltage (III/2): 32 V, number of positions: 8, product range: TBUS8-25..., pitch: 2.54 mm, mounting: DIN rail mounting, locking: without, mounting: without, type of packaging: packed in cardboard, Item with gold-plated contacts, bus connectors for connecting with electronics housings, 7 parallel contacts/1 serial contact

ICS50-B100X98-O-O-9005 - Mounting base housing

1118654

<https://www.phoenixcontact.com/us/products/1118654>



TBUS8-25,0-PPPPPPPS-9005 - DIN rail bus connectors

1072472

<https://www.phoenixcontact.com/us/products/1072472>

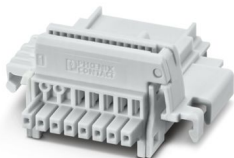


DIN rail connector, color: black, nominal current: 6 A, 4 A (parallel contacts) (Serial contacts), rated voltage (III/2): 32 V, number of positions: 8, product range: TBUS8-25..., pitch: 2.54 mm, mounting: DIN rail mounting, locking: without, mounting: without, type of packaging: packed in cardboard, Item with gold-plated contacts, bus connectors for connecting with electronics housings, 7 parallel contacts/1 serial contact

TBUS8-25,0-PPPPPPSS-7035 - DIN rail bus connectors

2202895

<https://www.phoenixcontact.com/us/products/2202895>



DIN rail connector, color: light gray, nominal current: 6 A, 4 A (parallel contacts) (Serial contacts), rated voltage (III/2): 32 V, number of positions: 8, product range: TBUS8-25..., pitch: 2.54 mm, mounting: DIN rail mounting, locking: without, mounting: without, type of packaging: packed in cardboard, Item with gold-plated contacts, bus connectors for connecting with electronics housings, 6 parallel contacts/2 serial contacts

ICS50-B100X98-O-O-9005 - Mounting base housing



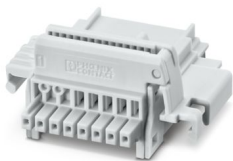
1118654

<https://www.phoenixcontact.com/us/products/1118654>

TBUS8-25,0-PPPPSSSS-7035 - DIN rail bus connectors

1156781

<https://www.phoenixcontact.com/us/products/1156781>



DIN rail connector, color: light gray, nominal current: 6 A, 4 A (parallel contacts) (Serial contacts), rated voltage (III/2): 32 V, number of positions: 8, product range: TBUS8-25..., pitch: 2.54 mm, mounting: DIN rail mounting, locking: without, mounting: without, type of packaging: packed in cardboard, Item with gold-plated contacts, bus connectors for connecting with electronics housings, 4 parallel contacts/4 serial contacts

TBUS8-25,0-PPPPSSSS-9005 - DIN rail bus connectors

1174596

<https://www.phoenixcontact.com/us/products/1174596>



DIN rail connector, color: black, nominal current: 6 A, 4 A (parallel contacts) (Serial contacts), rated voltage (III/2): 32 V, number of positions: 8, product range: TBUS8-25..., pitch: 2.54 mm, mounting: DIN rail mounting, locking: without, mounting: without, type of packaging: packed in cardboard, Item with gold-plated contacts, bus connectors for connecting with electronics housings, 4 parallel contacts/4 serial contacts

ICS50-B100X98-O-O-9005 - Mounting base housing



1118654

<https://www.phoenixcontact.com/us/products/1118654>

TBUS8-25-BRIDGE-7035 - DIN rail bus connectors

1387008

<https://www.phoenixcontact.com/us/products/1387008>

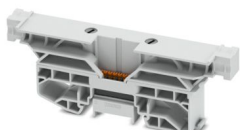
DIN rail bus adapter for ICS, overall width: 25 mm, 8 parallel positions, color: light grey (similar to RAL 7035)



TBUS8-SPL-KIT-7035 - DIN rail bus connectors

1488805

<https://www.phoenixcontact.com/us/products/1488805>



DIN rail connector, nominal cross section: 0.5 mm², color: light gray, nominal current: 6 A (parallel contacts), rated voltage (III/2): 32 V, contact surface: Au, contact connection type: Socket, number of potentials: 8, number of positions: 8, number of connections: 8, product range: TBUS8..2,54, pitch: 2.54 mm, connection method: Push-in spring connection, mounting: DIN rail mounting, conductor/PCB connection direction: 0 °, locking: Snap-in locking, mounting: without, type of packaging: packed in cardboard

ICS50-B100X98-O-O-9005 - Mounting base housing



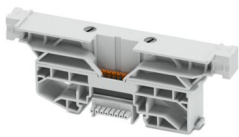
1118654

<https://www.phoenixcontact.com/us/products/1118654>

TBUS8-TAP-KIT-7035 - DIN rail bus connectors

1488806

<https://www.phoenixcontact.com/us/products/1488806>



DIN rail connector, nominal cross section: 0.5 mm², color: light gray, nominal current: 6 A (parallel contacts), rated voltage (III/2): 32 V, contact surface: Au, contact connection type: Socket, number of potentials: 8, number of positions: 8, number of connections: 8, product range: TBUS8..2,54, pitch: 2.54 mm, connection method: Push-in spring connection, mounting: DIN rail mounting, conductor/PCB connection direction: 0 °, locking: Snap-in locking, mounting: without, type of packaging: packed in cardboard

HS LC-H-D3/ R1XC1 - Fiber optic

2202313

<https://www.phoenixcontact.com/us/products/2202313>



Multiple light guides, passive, rigid, Cylinder head, Emission surface: planar, Number of displays: 1, (1 row, 1 column), pitch: 5.08 mm, ESD protection: <10 kV, can be used for the ME, ME-MAX, ME-IO, ME PLC, and EH housing ranges (housing must be processed)

ICS50-B100X98-O-O-9005 - Mounting base housing



1118654

<https://www.phoenixcontact.com/us/products/1118654>

HS LC-H-5X2/ R1XC1 - Fiber optic

2202314

<https://www.phoenixcontact.com/us/products/2202314>



Single light guide, passive, rigid, Rectangular, straight, Emission surface: planar, Number of displays: 1, (1 row, 1 column), ESD protection: <10 kV, can be used for the ME, ME-MAX, ME-IO, ME PLC, and EH housing ranges (housing must be processed)

HS LC-H-D3/ R2XC1-5,08 - Fiber optic

2202315

<https://www.phoenixcontact.com/us/products/2202315>



Multiple light guides, passive, rigid, Cylinder head, Emission surface: planar, Number of displays: 2, (2 rows, 1 column), pitch: 5.08 mm, ESD protection: <5 kV, can be used for the ME, ME-MAX, ME-IO, ME PLC, and EH housing ranges (housing must be processed)

ICS50-B100X98-O-O-9005 - Mounting base housing



1118654

<https://www.phoenixcontact.com/us/products/1118654>

HS LC-H-D2/ R2XC1-2,54 - Fiber optic

2202316

<https://www.phoenixcontact.com/us/products/2202316>



Multiple light guides with glare protection, passive, rigid, Raised head, Emission surface: spherical, Number of displays: 2, (2 rows, 1 column), pitch: 2.54 mm, ESD protection: <8 kV, can be used for the ME, ME-MAX, ME-IO, ME PLC, and EH housing ranges (housing must be processed)

HS LC-H-D2/ R2XC2-2,54 - Fiber optic

2202317

<https://www.phoenixcontact.com/us/products/2202317>



Multiple light guides with glare protection, passive, rigid, Raised head, Emission surface: spherical, Number of displays: 4, (2 rows, 2 columns), pitch: 2.54 mm, ESD protection: <8 kV, can be used for the ME, ME-MAX, ME-IO, ME PLC, and EH housing ranges (housing must be processed)

ICS50-B100X98-O-O-9005 - Mounting base housing



1118654

<https://www.phoenixcontact.com/us/products/1118654>

HS LC-H-D2/ R2XC4-2,54 - Fiber optic

2202531

<https://www.phoenixcontact.com/us/products/2202531>



Multiple light guides with glare protection, passive, rigid, Raised head, Emission surface: spherical, Number of displays: 8, (2 rows, 4 columns), pitch: 2.54 mm, ESD protection: <8 kV, can be used for the ME, ME-MAX, ME-IO, ME PLC, and EH housing ranges (housing must be processed)

HS LC-H-D2/ R2XC5-2,54 - Fiber optic

2202318

<https://www.phoenixcontact.com/us/products/2202318>



Multiple light guides with glare protection, passive, rigid, Raised head, Emission surface: spherical, Number of displays: 10, (2 rows, 5 columns), pitch: 2.54 mm, ESD protection: <8 kV, can be used for the ME, ME-MAX, ME-IO, ME PLC, and EH housing ranges (housing must be processed)

ICS50-B100X98-O-O-9005 - Mounting base housing



1118654

<https://www.phoenixcontact.com/us/products/1118654>

HS LC-H-D2/ R2XC10-2,54 - Fiber optic

2202319

<https://www.phoenixcontact.com/us/products/2202319>



Multiple light guides with glare protection, passive, rigid, Raised head, Emission surface: spherical, Number of displays: 20, (2 rows, 10 columns), pitch: 2.54 mm, ESD protection: <8 kV, can be used for the ME, ME-MAX, ME-IO, ME PLC, and EH housing ranges (housing must be processed)

HS LC-H-D2/ R3XC1-2,54 - Fiber optic

1393207

<https://www.phoenixcontact.com/us/products/1393207>



Multiple light guides with glare protection, passive, rigid, Raised head, Emission surface: spherical, Number of displays: 3, (3 rows, 1 column), pitch: 2.54 mm, ESD protection: <8 kV, can be used for the ME, ME-MAX, ME-IO, ME PLC, and EH housing ranges (housing must be processed)

ICS50-B100X98-O-O-9005 - Mounting base housing



1118654

<https://www.phoenixcontact.com/us/products/1118654>

HS LC-H-D2/ R3XC10-2,54 - Fiber optic

1104374

<https://www.phoenixcontact.com/us/products/1104374>



Multiple light guides with glare protection, passive, rigid, Raised head, Emission surface: spherical, Number of displays: 30, (3 rows, 10 columns), pitch: 2.54 mm, ESD protection: <8 kV, can be used for the ME, ME-MAX, ME-IO, ME PLC, and EH housing ranges (housing must be processed)

HS LC-H-D2/ R4XC4-2,54 - Fiber optic

2202532

<https://www.phoenixcontact.com/us/products/2202532>



Multiple light guides with glare protection, passive, rigid, Raised head, Emission surface: spherical, Number of displays: 16, (4 rows, 4 columns), pitch: 2.54 mm, ESD protection: <8 kV, can be used for the ME, ME-MAX, ME-IO, ME PLC, and EH housing ranges (housing must be processed)

ICS50-B100X98-O-O-9005 - Mounting base housing



1118654

<https://www.phoenixcontact.com/us/products/1118654>

HS LC-H-D2/ R4XC2-2,54 - Fiber optic

2202320

<https://www.phoenixcontact.com/us/products/2202320>



Multiple light guides with glare protection, passive, rigid, Raised head, Emission surface: spherical, Number of displays: 8, (4 rows, 2 columns), pitch: 2.54 mm, ESD protection: <8 kV, can be used for the ME, ME-MAX, ME-IO, ME PLC, and EH housing ranges (housing must be processed)

HS LC-H-D2/ R4XC5-2,54 - Fiber optic

2202321

<https://www.phoenixcontact.com/us/products/2202321>



Multiple light guides with glare protection, passive, rigid, Raised head, Emission surface: spherical, Number of displays: 20, (4 rows, 5 columns), pitch: 2.54 mm, ESD protection: <8 kV, can be used for the ME, ME-MAX, ME-IO, ME PLC, and EH housing ranges (housing must be processed)

ICS50-B100X98-O-O-9005 - Mounting base housing



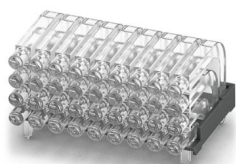
1118654

<https://www.phoenixcontact.com/us/products/1118654>

HS LC-H-D2/ R4XC9-2,54 - Fiber optic

2202322

<https://www.phoenixcontact.com/us/products/2202322>



Multiple light guides with glare protection, passive, rigid, Raised head, Emission surface: spherical, Number of displays: 36, (4 rows, 9 columns), pitch: 2.54 mm, ESD protection: <8 kV, can be used for the ME, ME-MAX, ME-IO, ME PLC, and EH housing ranges (housing must be processed)

HS LC-H-D2/ R4XC10-2,54 - Fiber optic

2202323

<https://www.phoenixcontact.com/us/products/2202323>



Multiple light guides with glare protection, passive, rigid, Raised head, Emission surface: spherical, Number of displays: 40, (4 rows, 10 columns), pitch: 2.54 mm, ESD protection: <8 kV, can be used for the ME, ME-MAX, ME-IO, ME PLC, and EH housing ranges (housing must be processed)

ICS50-B100X98-O-O-9005 - Mounting base housing



1118654

<https://www.phoenixcontact.com/us/products/1118654>

HS LC-H-D2C/ R2XC1-2,54 - Fiber optic

1036658

<https://www.phoenixcontact.com/us/products/1036658>



Multiple light guides with glare protection, passive, rigid, Raised head, conical, Emission surface: spherical, Number of displays: 2, (2 rows, 1 column), pitch: 2.54 mm, ESD protection: <8 kV, can be used for the ME, ME-MAX, ME-IO, ME PLC, and EH housing ranges (housing must be processed)

HS LC-H-D2C/ R2XC2-2,54 - Fiber optic

1043044

<https://www.phoenixcontact.com/us/products/1043044>



Multiple light guides with glare protection, passive, rigid, Raised head, conical, Emission surface: spherical, Number of displays: 4, (2 rows, 2 columns), pitch: 2.54 mm, ESD protection: <8 kV, can be used for the ME, ME-MAX, ME-IO, ME PLC, and EH housing ranges (housing must be processed)

ICS50-B100X98-O-O-9005 - Mounting base housing



1118654

<https://www.phoenixcontact.com/us/products/1118654>

HS LC-H-D2C/ R2XC4-2,54 - Fiber optic

1036724

<https://www.phoenixcontact.com/us/products/1036724>



Multiple light guides with glare protection, passive, rigid, Raised head, conical, Emission surface: spherical, Number of displays: 8, (2 rows, 4 columns), pitch: 2.54 mm, ESD protection: <8 kV, can be used for the ME, ME-MAX, ME-IO, ME PLC, and EH housing ranges (housing must be processed)

HS LC-H-D2C/ R2XC5-2,54 - Fiber optic

1071310

<https://www.phoenixcontact.com/us/products/1071310>



Multiple light guides with glare protection, passive, rigid, Raised head, conical, Emission surface: spherical, Number of displays: 10, (2 rows, 5 columns), pitch: 2.54 mm, ESD protection: <8 kV, can be used for the ME, ME-MAX, ME-IO, ME PLC, and EH housing ranges (housing must be processed)

ICS50-B100X98-O-O-9005 - Mounting base housing



1118654

<https://www.phoenixcontact.com/us/products/1118654>

HS LC-H-D2C/ R2XC10-2,54 - Fiber optic

1071314

<https://www.phoenixcontact.com/us/products/1071314>

Multiple light guides with glare protection, passive, rigid, Raised head, conical, Emission surface: spherical, Number of displays: 20, (2 rows, 10 columns), pitch: 2.54 mm, ESD protection: <8 kV, can be used for the ME, ME-MAX, ME-IO, ME PLC, and EH housing ranges (housing must be processed)



HS LC-H-D2C/ R4XC2-2,54 - Fiber optic

1071316

<https://www.phoenixcontact.com/us/products/1071316>

Multiple light guides with glare protection, passive, rigid, Raised head, conical, Emission surface: spherical, Number of displays: 8, (4 rows, 2 columns), pitch: 2.54 mm, ESD protection: <8 kV, can be used for the ME, ME-MAX, ME-IO, ME PLC, and EH housing ranges (housing must be processed)



ICS50-B100X98-O-O-9005 - Mounting base housing



1118654

<https://www.phoenixcontact.com/us/products/1118654>

HS LC-H-D2C/ R4XC4-2,54 - Fiber optic

1036727

<https://www.phoenixcontact.com/us/products/1036727>



Multiple light guides with glare protection, passive, rigid, Raised head, conical, Emission surface: spherical, Number of displays: 16, (4 rows, 4 columns), pitch: 2.54 mm, ESD protection: <8 kV, can be used for the ME, ME-MAX, ME-IO, ME PLC, and EH housing ranges (housing must be processed)

HS LC-H-D2C/ R4XC5-2,54 - Fiber optic

1071318

<https://www.phoenixcontact.com/us/products/1071318>



Multiple light guides with glare protection, passive, rigid, Raised head, conical, Emission surface: spherical, Number of displays: 20, (4 rows, 5 columns), pitch: 2.54 mm, ESD protection: <8 kV, can be used for the ME, ME-MAX, ME-IO, ME PLC, and EH housing ranges (housing must be processed)

ICS50-B100X98-O-O-9005 - Mounting base housing



1118654

<https://www.phoenixcontact.com/us/products/1118654>

HS LC-H-D2C/ R4XC9-2,54 - Fiber optic

1071321

<https://www.phoenixcontact.com/us/products/1071321>

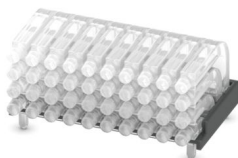


Multiple light guides with glare protection, passive, rigid, Raised head, conical, Emission surface: spherical, Number of displays: 36, (4 rows, 9 columns), pitch: 2.54 mm, ESD protection: <8 kV, can be used for the ME, ME-MAX, ME-IO, ME PLC, and EH housing ranges (housing must be processed)

HS LC-H-D2C/ R4XC10-2,54 - Fiber optic

1071329

<https://www.phoenixcontact.com/us/products/1071329>



Multiple light guides with glare protection, passive, rigid, Raised head, conical, Emission surface: spherical, Number of displays: 40, (4 rows, 10 columns), pitch: 2.54 mm, ESD protection: <8 kV, can be used for the ME, ME-MAX, ME-IO, ME PLC, and EH housing ranges (housing must be processed)

ICS50-B100X98-O-O-9005 - Mounting base housing



1118654

<https://www.phoenixcontact.com/us/products/1118654>

HS LC-H-D3PL/ R2XC2-5,08 - Fiber optic

1474395

<https://www.phoenixcontact.com/us/products/1474395>



Multiple light guides with glare protection, passive, rigid, Cylinder head, Emission surface: planar, Number of displays: 4, (2 rows, 2 columns), pitch: 5.08 mm, ESD protection: <8 kV, can be used for the ME, ME-MAX, ME-IO, ME PLC, and EH housing ranges (housing must be processed)

HS LC-H-D3PL/ R2XC3-5,08 - Fiber optic

1474396

<https://www.phoenixcontact.com/us/products/1474396>



Multiple light guides with glare protection, passive, rigid, Cylinder head, Emission surface: planar, Number of displays: 6, (2 rows, 3 columns), pitch: 5.08 mm, ESD protection: <8 kV, can be used for the ME, ME-MAX, ME-IO, ME PLC, and EH housing ranges (housing must be processed)

ICS50-B100X98-O-O-9005 - Mounting base housing



1118654

<https://www.phoenixcontact.com/us/products/1118654>

HS LC-H-D3PL/ R2XC4-5,08 - Fiber optic

1474397

<https://www.phoenixcontact.com/us/products/1474397>



Multiple light guides with glare protection, passive, rigid, Cylinder head, Emission surface: planar, Number of displays: 8, (2 rows, 4 columns), pitch: 5.08 mm, ESD protection: <8 kV, can be used for the ME, ME-MAX, ME-IO, ME PLC, and EH housing ranges (housing must be processed)

HS LC-H-D3PL/ R2XC5-5,08 - Fiber optic

1474399

<https://www.phoenixcontact.com/us/products/1474399>



Multiple light guides with glare protection, passive, rigid, Cylinder head, Emission surface: planar, Number of displays: 10, (2 rows, 5 columns), pitch: 5.08 mm, ESD protection: <8 kV, can be used for the ME, ME-MAX, ME-IO, ME PLC, and EH housing ranges (housing must be processed)

ICS50-B100X98-O-O-9005 - Mounting base housing



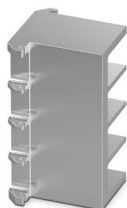
1118654

<https://www.phoenixcontact.com/us/products/1118654>

ICE25-F45H-A1 - Heatsink

1328703

<https://www.phoenixcontact.com/us/products/1328703>

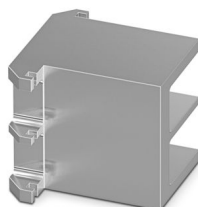


Heatsink for housing series: ICS, type: Heatsink fillers, material: Aluminum, anodized, product range: ICS25, width: 44.9 mm, height: 25 mm, Individual milling possible.

ICE25-F22H-A1 - Heatsink

1328704

<https://www.phoenixcontact.com/us/products/1328704>



Heatsink for housing series: ICS, type: Heatsink fillers, material: Aluminum, anodized, product range: ICS25, width: 22.4 mm, height: 25 mm, Individual milling possible.

ICS50-B100X98-O-O-9005 - Mounting base housing



1118654

<https://www.phoenixcontact.com/us/products/1118654>

ICE25-R122X45-A1 - Heatsink

1328708

<https://www.phoenixcontact.com/us/products/1328708>

Heatsink for housing series: ICS, material: Aluminum, anodized, product range: ICS25-..122X.., width: 44.9 mm, height: 25 mm, Individual milling possible.



ICE25-R122X22-A1 - Heatsink

1328711

<https://www.phoenixcontact.com/us/products/1328711>

Heatsink for housing series: ICS, material: Aluminum, anodized, product range: ICS25-..122X.., width: 22.4 mm, height: 25 mm, Individual milling possible.



ICS50-B100X98-O-O-9005 - Mounting base housing



1118654

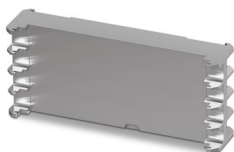
<https://www.phoenixcontact.com/us/products/1118654>

ICE25-R100X45-A1 - Heatsink

1328714

<https://www.phoenixcontact.com/us/products/1328714>

Heatsink for housing series: ICS, material: Aluminum, anodized, product range: ICS25-..100X.., width: 44.9 mm, height: 25 mm, Individual milling possible.



ICE25-R100X22-A1 - Heatsink

1328715

<https://www.phoenixcontact.com/us/products/1328715>

Heatsink for housing series: ICS, material: Aluminum, anodized, product range: ICS25-..100X.., width: 22.4 mm, height: 25 mm, Individual milling possible.



ICS50-B100X98-O-O-9005 - Mounting base housing



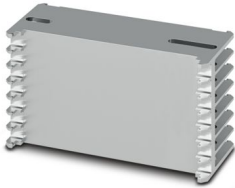
1118654

<https://www.phoenixcontact.com/us/products/1118654>

ICE50-R122X67-A1 - Heatsink

1118305

<https://www.phoenixcontact.com/us/products/1118305>



Heatsink for housing series: ICS, material: Aluminum, anodized, product range: ICS50-..122X.., width: 67.4 mm, height: 50.1 mm, Individual milling possible.

ICE50-R100X67-A1 - Heatsink

1118306

<https://www.phoenixcontact.com/us/products/1118306>



Heatsink for housing series: ICS, material: Aluminum, anodized, product range: ICS50-..100X.., width: 67.4 mm, height: 50.1 mm, Individual milling possible.

ICS50-B100X98-O-O-9005 - Mounting base housing



1118654

<https://www.phoenixcontact.com/us/products/1118654>

ICE50-R122X45-A1 - Heatsink

1328706

<https://www.phoenixcontact.com/us/products/1328706>

Heatsink for housing series: ICS, material: Aluminum, anodized, product range: ICS50-..122X.., width: 44.9 mm, height: 50.1 mm, Individual milling possible.



ICE50-R122X22-A1 - Heatsink

1328707

<https://www.phoenixcontact.com/us/products/1328707>

Heatsink for housing series: ICS, material: Aluminum, anodized, product range: ICS50-..122X.., width: 22.4 mm, height: 50.1 mm, Individual milling possible.



ICS50-B100X98-O-O-9005 - Mounting base housing



1118654

<https://www.phoenixcontact.com/us/products/1118654>

ICE50-R100X45-A1 - Heatsink

1328712

<https://www.phoenixcontact.com/us/products/1328712>

Heatsink for housing series: ICS, material: Aluminum, anodized, product range: ICS50-..100X.., width: 44.9 mm, height: 50.1 mm, Individual milling possible.



ICE50-R100X22-A1 - Heatsink

1328713

<https://www.phoenixcontact.com/us/products/1328713>

Heatsink for housing series: ICS, material: Aluminum, anodized, product range: ICS50-..100X.., width: 22.4 mm, height: 50.1 mm, Individual milling possible.



ICS50-B100X98-O-O-9005 - Mounting base housing



1118654

<https://www.phoenixcontact.com/us/products/1118654>

ICC-CODING - Coding element

1084009

<https://www.phoenixcontact.com/us/products/1084009>



Coding profile for ICC connectors of the ICS housing series

PSPT 2,5/ 4-ST BK - PCB connector

2202757

<https://www.phoenixcontact.com/us/products/2202757>



PCB connector, nominal cross section: 2.5 mm², color: black, nominal current: 16 A, rated voltage (III/2): 300 V, contact surface: Sn, contact connection type: Socket, number of potentials: 4, number of rows: 1, number of positions: 4, number of connections: 4, product range: PSPT 2,5/..-ST, pitch: 5 mm, connection method: Push-in spring connection, conductor/PCB connection direction: 0 °, locking clip: - Locking clip, locking: without, mounting: without, type of packaging: packed in cardboard, Color of the spring lever: orange

ICS50-B100X98-O-O-9005 - Mounting base housing



1118654

<https://www.phoenixcontact.com/us/products/1118654>

PSPT 2,5/ 4-ST BU - PCB connector

1036975

<https://www.phoenixcontact.com/us/products/1036975>



PCB connector, nominal cross section: 2.5 mm², color: blue, nominal current: 16 A, rated voltage (III/2): 300 V, contact surface: Sn, contact connection type: Socket, number of potentials: 4, number of rows: 1, number of positions: 4, number of connections: 4, product range: PSPT 2,5/..-ST, pitch: 5 mm, connection method: Push-in spring connection, conductor/PCB connection direction: 0 °, locking clip: - Locking clip, locking: without, mounting: without, type of packaging: packed in cardboard, Color of the spring lever: orange

PSPT 2,5/ 4-ST GY - PCB connector

1036976

<https://www.phoenixcontact.com/us/products/1036976>



PCB connector, nominal cross section: 2.5 mm², color: gray, nominal current: 16 A, rated voltage (III/2): 300 V, contact surface: Sn, contact connection type: Socket, number of potentials: 4, number of rows: 1, number of positions: 4, number of connections: 4, product range: PSPT 2,5/..-ST, pitch: 5 mm, connection method: Push-in spring connection, conductor/PCB connection direction: 0 °, locking clip: - Locking clip, locking: without, mounting: without, type of packaging: packed in cardboard, Color of the spring lever: orange

ICS50-B100X98-O-O-9005 - Mounting base housing



1118654

<https://www.phoenixcontact.com/us/products/1118654>

PSPT 2,5/ 4-ST KMGY - PCB connector

2202344

<https://www.phoenixcontact.com/us/products/2202344>

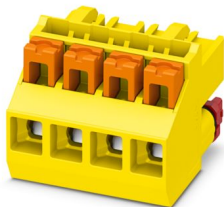


PCB connector, nominal cross section: 2.5 mm², color: light gray, nominal current: 16 A, rated voltage (III/2): 300 V, contact surface: Sn, contact connection type: Socket, number of potentials: 4, number of rows: 1, number of positions: 4, number of connections: 4, product range: PSPT 2,5/...-ST, pitch: 5 mm, connection method: Push-in spring connection, conductor/PCB connection direction: 0 °, locking clip: - Locking clip, locking: without, mounting: without, type of packaging: packed in cardboard, Color of the spring lever: orange

ICC25-PPC2,5/4-5,0-AA-1018 - PCB connector

1360576

<https://www.phoenixcontact.com/us/products/1360576>



PCB connector, nominal cross section: 2.5 mm², color: yellow, nominal current: 16 A, rated voltage (III/2): 320 V, contact surface: Sn, contact connection type: Socket, number of potentials: 4, number of rows: 1, number of positions: 4, number of connections: 4, product range: ICC...-PPC2,5/...-5,0, pitch: 5 mm, connection method: Push-in spring connection, conductor/PCB connection direction: 0 °, locking clip: - Locking clip, locking: without, mounting: without, type of packaging: packed in cardboard, Color of the spring lever: orange

ICS50-B100X98-O-O-9005 - Mounting base housing



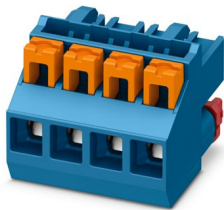
1118654

<https://www.phoenixcontact.com/us/products/1118654>

ICC25-PPC2,5/4-5,0-AA-5015 - PCB connector

1272011

<https://www.phoenixcontact.com/us/products/1272011>

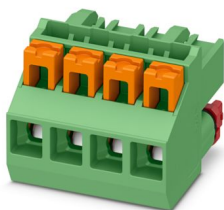


PCB connector, nominal cross section: 2.5 mm², color: blue, nominal current: 16 A, rated voltage (III/2): 320 V, contact surface: Sn, contact connection type: Socket, number of potentials: 4, number of rows: 1, number of positions: 4, number of connections: 4, product range: ICC...-PPC2,5/...-5,0, pitch: 5 mm, connection method: Push-in spring connection, conductor/PCB connection direction: 0 °, locking clip: - Locking clip, locking: without, mounting: without, type of packaging: packed in cardboard, Color of the spring lever: orange

ICC25-PPC2,5/4-5,0-AA-6021 - PCB connector

1475114

<https://www.phoenixcontact.com/us/products/1475114>



PCB connector, nominal cross section: 2.5 mm², color: green, nominal current: 16 A, rated voltage (III/2): 320 V, contact surface: Sn, contact connection type: Socket, number of potentials: 4, number of rows: 1, number of positions: 4, number of connections: 4, product range: ICC...-PPC2,5/...-5,0, pitch: 5 mm, connection method: Push-in spring connection, conductor/PCB connection direction: 0 °, locking clip: - Locking clip, locking: without, mounting: without, type of packaging: packed in cardboard, Color of the spring lever: orange

ICS50-B100X98-O-O-9005 - Mounting base housing



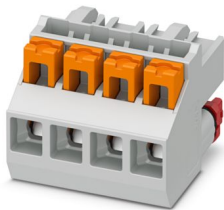
1118654

<https://www.phoenixcontact.com/us/products/1118654>

ICC25-PPC2,5/4-5,0-AA-7035 - PCB connector

1084034

<https://www.phoenixcontact.com/us/products/1084034>

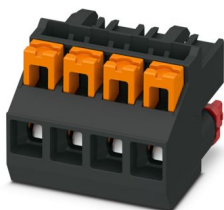


PCB connector, nominal cross section: 2.5 mm², color: light gray, nominal current: 16 A, rated voltage (III/2): 320 V, contact surface: Sn, contact connection type: Socket, number of potentials: 4, number of rows: 1, number of positions: 4, number of connections: 4, product range: ICC...-PPC2,5/...-5,0, pitch: 5 mm, connection method: Push-in spring connection, conductor/PCB connection direction: 0 °, locking clip: - Locking clip, locking: without, mounting: without, type of packaging: packed in cardboard, Color of the spring lever: orange

ICC25-PPC2,5/4-5,0-AA-9005 - PCB connector

1227025

<https://www.phoenixcontact.com/us/products/1227025>



PCB connector, nominal cross section: 2.5 mm², color: black, nominal current: 16 A, rated voltage (III/2): 320 V, contact surface: Sn, contact connection type: Socket, number of potentials: 4, number of rows: 1, number of positions: 4, number of connections: 4, product range: ICC...-PPC2,5/...-5,0, pitch: 5 mm, connection method: Push-in spring connection, conductor/PCB connection direction: 0 °, locking clip: - Locking clip, locking: without, mounting: without, type of packaging: packed in cardboard, Color of the spring lever: orange

ICS50-B100X98-O-O-9005 - Mounting base housing



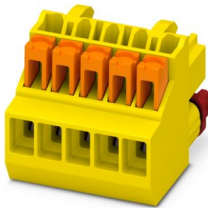
1118654

<https://www.phoenixcontact.com/us/products/1118654>

ICC25-PPC1,5/5-3,5-AA-1018 - PCB connector

1360577

<https://www.phoenixcontact.com/us/products/1360577>

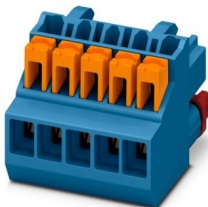


PCB connector, nominal cross section: 1.5 mm², color: yellow, nominal current: 8 A, rated voltage (III/2): 150 V, contact surface: Sn, contact connection type: Socket, number of potentials: 5, number of rows: 1, number of positions: 5, number of connections: 5, product range: ICC...-PPC1,5/...-3,5, pitch: 3.5 mm, connection method: Push-in spring connection, conductor/PCB connection direction: 0 °, locking clip: - Locking clip, locking: without, mounting: without, type of packaging: packed in cardboard, Color of the spring lever: orange

ICC25-PPC1,5/5-3,5-AA-5015 - PCB connector

1522851

<https://www.phoenixcontact.com/us/products/1522851>



PCB connector, nominal cross section: 1.5 mm², color: blue, nominal current: 8 A, rated voltage (III/2): 150 V, contact surface: Sn, contact connection type: Socket, number of potentials: 5, number of rows: 1, number of positions: 5, number of connections: 5, product range: ICC...-PPC1,5/...-3,5, pitch: 3.5 mm, connection method: Push-in spring connection, conductor/PCB connection direction: 0 °, locking clip: - Locking clip, locking: without, mounting: without, type of packaging: packed in cardboard, Color of the spring lever: orange

ICS50-B100X98-O-O-9005 - Mounting base housing



1118654

<https://www.phoenixcontact.com/us/products/1118654>

ICC25-PPC1,5/5-3,5-AA-7035 - PCB connector

1102108

<https://www.phoenixcontact.com/us/products/1102108>

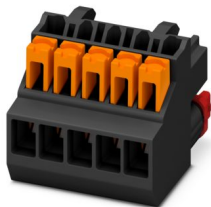


PCB connector, nominal cross section: 1.5 mm², color: light gray, nominal current: 8 A, rated voltage (III/2): 150 V, contact surface: Sn, contact connection type: Socket, number of potentials: 5, number of rows: 1, number of positions: 5, number of connections: 5, product range: ICC...-PPC1,5/...-3,5, pitch: 3.5 mm, connection method: Push-in spring connection, conductor/PCB connection direction: 0 °, locking clip: - Locking clip, locking: without, mounting: without, type of packaging: packed in cardboard, Color of the spring lever: orange

ICC25-PPC1,5/5-3,5-AA-BK - PCB connector

1561123

<https://www.phoenixcontact.com/us/products/1561123>



PCB connector, nominal cross section: 1.5 mm², color: black, nominal current: 8 A, rated voltage (III/2): 150 V, contact surface: Sn, contact connection type: Socket, number of potentials: 5, number of rows: 1, number of positions: 5, number of connections: 5, product range: ICC...-PPC1,5/...-3,5, pitch: 3.5 mm, connection method: Push-in spring connection, conductor/PCB connection direction: 0 °, locking clip: - Locking clip, locking: without, mounting: without, type of packaging: packed in cardboard, Color of the spring lever: orange

ICS50-B100X98-O-O-9005 - Mounting base housing



1118654

<https://www.phoenixcontact.com/us/products/1118654>

MSTBT 2,5 HC/ 4-STP BU - PCB connector

1009166

<https://www.phoenixcontact.com/us/products/1009166>

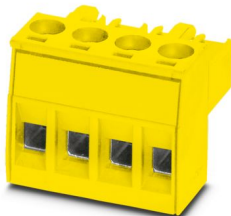


PCB connector, nominal cross section: 2.5 mm², color: blue, nominal current: 16 A (see derating curve), rated voltage (III/2): 320 V, contact surface: Sn, contact connection type: Socket, number of potentials: 4, number of rows: 1, number of positions: 4, number of connections: 4, product range: MSTBT 2,5 HC/...-STP, pitch: 5 mm, connection method: Screw connection with tension sleeve, conductor/PCB connection direction: 0 °, locking clip: - Locking clip, plug-in system: COMBICON MSTB 2,5 HC, locking: without, mounting: without, type of packaging: packed in cardboard

MSTBT 2,5 HC/ 4-STP YE - PCB connector

1511787

<https://www.phoenixcontact.com/us/products/1511787>



PCB connector, nominal cross section: 2.5 mm², color: yellow, nominal current: 16 A (see derating curve), rated voltage (III/2): 320 V, contact surface: Sn, contact connection type: Socket, number of potentials: 4, number of rows: 1, number of positions: 4, number of connections: 4, product range: MSTBT 2,5 HC/...-STP, pitch: 5 mm, connection method: Screw connection with tension sleeve, conductor/PCB connection direction: 0 °, locking clip: - Locking clip, plug-in system: COMBICON MSTB 2,5 HC, locking: without, mounting: without, type of packaging: packed in cardboard

ICS50-B100X98-O-O-9005 - Mounting base housing



1118654

<https://www.phoenixcontact.com/us/products/1118654>

MSTBT 2,5 HC/ 4-STP 7042 - PCB connector

1546540

<https://www.phoenixcontact.com/us/products/1546540>



PCB connector, nominal cross section: 2.5 mm², color: gray, nominal current: 16 A (see derating curve), rated voltage (III/2): 320 V, contact surface: Sn, contact connection type: Socket, number of potentials: 4, number of rows: 1, number of positions: 4, number of connections: 4, product range: MSTBT 2,5 HC/...-STP, pitch: 5 mm, connection method: Screw connection with tension sleeve, conductor/PCB connection direction: 0 °, locking clip: - Locking clip, plug-in system: COMBICON MSTB 2,5 HC, locking: without, mounting: without, type of packaging: packed in cardboard

MSTBT 2,5 HC/ 4-STP GY7035 - PCB connector

2200332

<https://www.phoenixcontact.com/us/products/2200332>



PCB connector, nominal cross section: 2.5 mm², color: light gray, nominal current: 16 A (see derating curve), rated voltage (III/2): 320 V, contact surface: Sn, contact connection type: Socket, number of potentials: 4, number of rows: 1, number of positions: 4, number of connections: 4, product range: MSTBT 2,5 HC/...-STP, pitch: 5 mm, connection method: Screw connection with tension sleeve, conductor/PCB connection direction: 0 °, locking clip: - Locking clip, plug-in system: COMBICON MSTB 2,5 HC, locking: without, mounting: without, type of packaging: packed in cardboard

ICS50-B100X98-O-O-9005 - Mounting base housing



1118654

<https://www.phoenixcontact.com/us/products/1118654>

MSTBT 2,5 HC/ 4-STP BK - PCB connector

2200482

<https://www.phoenixcontact.com/us/products/2200482>



PCB connector, nominal cross section: 2.5 mm², color: black, nominal current: 16 A (see derating curve), rated voltage (III/2): 320 V, contact surface: Sn, contact connection type: Socket, number of potentials: 4, number of rows: 1, number of positions: 4, number of connections: 4, product range: MSTBT 2,5 HC/...-STP, pitch: 5 mm, connection method: Screw connection with tension sleeve, conductor/PCB connection direction: 0 °, locking clip: - Locking clip, plug-in system: COMBICON MSTB 2,5 HC, locking: without, mounting: without, type of packaging: packed in cardboard

MSTBT 2,5 HC/ 4-STP BUGY - PCB connector

2201085

<https://www.phoenixcontact.com/us/products/2201085>



PCB connector, nominal cross section: 2.5 mm², color: blue, nominal current: 16 A (see derating curve), rated voltage (III/2): 320 V, contact surface: Sn, contact connection type: Socket, number of potentials: 4, number of rows: 1, number of positions: 4, number of connections: 4, product range: MSTBT 2,5 HC/...-STP, pitch: 5 mm, connection method: Screw connection with tension sleeve, conductor/PCB connection direction: 0 °, locking clip: - Locking clip, plug-in system: COMBICON MSTB 2,5 HC, locking: without, mounting: without, type of packaging: packed in cardboard

ICS50-B100X98-O-O-9005 - Mounting base housing



1118654

<https://www.phoenixcontact.com/us/products/1118654>

ICC25-PSC2,5/4-5,0-AA-7035 - PCB connector

1084027

<https://www.phoenixcontact.com/us/products/1084027>



PCB connector, nominal cross section: 2.5 mm², color: light gray, nominal current: 16 A, rated voltage (III/2): 320 V, contact surface: Sn, contact connection type: Socket, number of potentials: 4, number of rows: 1, number of positions: 4, number of connections: 4, product range: ICC...-PSC2,5/...-5,0, pitch: 5 mm, connection method: Screw connection with tension sleeve, conductor/PCB connection direction: 0 °, locking clip: - Locking clip, locking: without, mounting: without, type of packaging: packed in cardboard

ICC25-PSC2,5/4-5,0-AA-1018 - PCB connector

1367873

<https://www.phoenixcontact.com/us/products/1367873>



PCB connector, nominal cross section: 2.5 mm², color: yellow, nominal current: 16 A, rated voltage (III/2): 320 V, contact surface: Sn, contact connection type: Socket, number of potentials: 4, number of rows: 1, number of positions: 4, number of connections: 4, product range: ICC...-PSC2,5/...-5,0, pitch: 5 mm, connection method: Screw connection with tension sleeve, conductor/PCB connection direction: 0 °, locking clip: - Locking clip, locking: without, mounting: without, type of packaging: packed in cardboard

ICS50-B100X98-O-O-9005 - Mounting base housing



1118654

<https://www.phoenixcontact.com/us/products/1118654>

ICC25-PSC2,5/4-5,0-AA-9005 - PCB connector

1428287

<https://www.phoenixcontact.com/us/products/1428287>

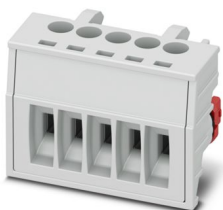


PCB connector, nominal cross section: 2.5 mm², color: black, nominal current: 16 A, rated voltage (III/2): 320 V, contact surface: Sn, contact connection type: Socket, number of potentials: 4, number of rows: 1, number of positions: 4, number of connections: 4, product range: ICC...PSC2,5/...-5,0, pitch: 5 mm, connection method: Screw connection with tension sleeve, conductor/PCB connection direction: 0 °, locking clip: - Locking clip, locking: without, mounting: without, type of packaging: packed in cardboard

ICC25-PSC1,5/5-3,5-AA-7035 - PCB connector

1084024

<https://www.phoenixcontact.com/us/products/1084024>



PCB connector, nominal cross section: 1.5 mm², color: light gray, nominal current: 8 A, rated voltage (III/2): 150 V, contact surface: Sn, contact connection type: Socket, number of potentials: 5, number of rows: 1, number of positions: 5, number of connections: 5, product range: ICC...PSC1,5/...-3,5, pitch: 3.5 mm, connection method: Screw connection with tension sleeve, screw head form: L Slotted, conductor/PCB connection direction: 0 °, locking clip: - Locking clip, locking: without, mounting: without, type of packaging: packed in cardboard

ICS50-B100X98-O-O-9005 - Mounting base housing



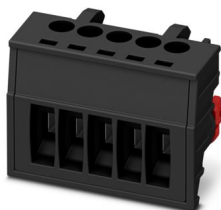
1118654

<https://www.phoenixcontact.com/us/products/1118654>

ICC25-PSC1,5/5-3,5-AA-BK - PCB connector

1560994

<https://www.phoenixcontact.com/us/products/1560994>



PCB connector, nominal cross section: 1.5 mm², color: black, nominal current: 8 A, rated voltage (III/2): 150 V, contact surface: Sn, contact connection type: Socket, number of potentials: 5, number of rows: 1, number of positions: 5, number of connections: 5, product range: ICC...-PSC1,5/...-3,5, pitch: 3.5 mm, connection method: Screw connection with tension sleeve, screw head form: L Slotted, conductor/PCB connection direction: 0 °, locking clip: - Locking clip, locking: without, mounting: without, type of packaging: packed in cardboard

NS 35/ 7,5 PERF 2000MM - DIN rail perforated

0801733

<https://www.phoenixcontact.com/us/products/0801733>



DIN rail perforated, Pack of 25 (50 m), acc. to EN 60715, material: Steel, galvanized, passivated with a thick layer, Standard profile, color: silver

ICS50-B100X98-O-O-9005 - Mounting base housing



1118654

<https://www.phoenixcontact.com/us/products/1118654>

NS 35/ 7,5 UNPERF 2000MM - DIN rail, unperforated

0801681

<https://www.phoenixcontact.com/us/products/0801681>



DIN rail, unperforated, Pack of 25 (50 m), acc. to EN 60715, material: Steel, galvanized, passivated with a thick layer, Standard profile, color: silver

NS 35/ 7,5 WH PERF 2000MM - DIN rail perforated

1204119

<https://www.phoenixcontact.com/us/products/1204119>



DIN rail perforated, Pack of 25 (50 m), acc. to EN 60715, material: Steel, Galvanized, white passivated, Standard profile, color: silver

ICS50-B100X98-O-O-9005 - Mounting base housing



1118654

<https://www.phoenixcontact.com/us/products/1118654>

NS 35/ 7,5 WH UNPERF 2000MM-VPE 10 - DIN rail, unperforated

1204122

<https://www.phoenixcontact.com/us/products/1204122>



DIN rail, unperforated, Pack of 10 (20 m), acc. to EN 60715, material: Steel, Galvanized, white passivated, Standard profile, color: silver

NS 35/ 7,5 AL UNPERF 2000MM - DIN rail, unperforated

0801704

<https://www.phoenixcontact.com/us/products/0801704>



DIN rail, unperforated, Pack of 25 (50 m), acc. to EN 60715, material: Aluminum, uncoated, Standard profile, color: silver

ICS50-B100X98-O-O-9005 - Mounting base housing



1118654

<https://www.phoenixcontact.com/us/products/1118654>

NS 35/ 7,5 ZN PERF 2000MM - DIN rail perforated

1206421

<https://www.phoenixcontact.com/us/products/1206421>



DIN rail perforated, Pack of 25 (50 m), acc. to EN 60715, material: Steel, galvanized, Standard profile, color: silver

NS 35/ 7,5 ZN UNPERF 2000MM - DIN rail, unperforated

1206434

<https://www.phoenixcontact.com/us/products/1206434>



DIN rail, unperforated, Pack of 25 (50 m), acc. to EN 60715, material: Steel, galvanized, Standard profile, color: silver

ICS50-B100X98-O-O-9005 - Mounting base housing

1118654

<https://www.phoenixcontact.com/us/products/1118654>



NS 35/ 7,5 CU UNPERF 2000MM-VPE 10 - DIN rail, unperforated

0801762

<https://www.phoenixcontact.com/us/products/0801762>



DIN rail, unperforated, Pack of 10 (20 m), acc. to EN 60715, material: Copper, uncoated, Standard profile, color: copper-colored

NS 35/ 7,5 CAP - End cap

1206560

<https://www.phoenixcontact.com/us/products/1206560>

DIN rail end piece, for DIN rail NS 35/7.5



Phoenix Contact 2024 © - all rights reserved
<https://www.phoenixcontact.com>

Phoenix Contact USA
586 Fulling Mill Road
Middletown, PA 17057, United States
(+717) 944-1300
info@phoenixcon.com