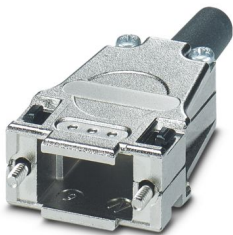


Please be informed that the data shown in this PDF document is generated from our online catalog. Please find the complete data in the user documentation. Our general terms of use for downloads are valid.



D-SUB sleeve housings, degree of protection: IP20, material: Zinc die-cast, cable outlet: straight, housing size: 1, color: Bare metallic

Your advantages

- Easy to mount thanks to preassembled locking screws
- Angled conductor entry
- Antimagnetic plastic housing

Commercial data

| | |
|--------------------------------------|---------------|
| Item number | 1419722 |
| Packing unit | 1 pc |
| Minimum order quantity | 1 pc |
| Sales key | AB19 |
| Product key | ABNCAE |
| GTIN | 4055626188010 |
| Weight per piece (including packing) | 45.4 g |
| Weight per piece (excluding packing) | 45 g |
| Customs tariff number | 85389099 |
| Country of origin | DE |

CUC-DST-GZNI-S/DSSC9 - D-SUB sleeve housings



1419722

<https://www.phoenixcontact.com/us/products/1419722>

Technical data

Product properties

| | |
|----------------------|-----------------|
| Product type | Sleeve housings |
| Type | D-SUB |
| No. of cable outlets | 1 |
| Cable outlet | straight |

Data management status

| | |
|------------------|----|
| Article revision | 00 |
|------------------|----|

Connection data

| | |
|--------------|----------|
| Screw thread | 4-40 UNC |
|--------------|----------|

Dimensions

| | |
|---------------------|---------|
| Dimensional drawing | |
| Width | 31.6 mm |
| Height | 15.2 mm |
| Depth | 64.9 mm |

Material specifications

| | |
|--|---------------|
| Color | Bare metallic |
| Flammability rating according to UL 94 | V0 |
| Housing material | Zinc die-cast |
| Housing surface material | nickel-plated |

Cable/line

| | |
|-------------------------|--|
| External cable diameter | 3 mm ... 9.5 mm (Without bending protection) |
|-------------------------|--|

Environmental and real-life conditions

Ambient conditions

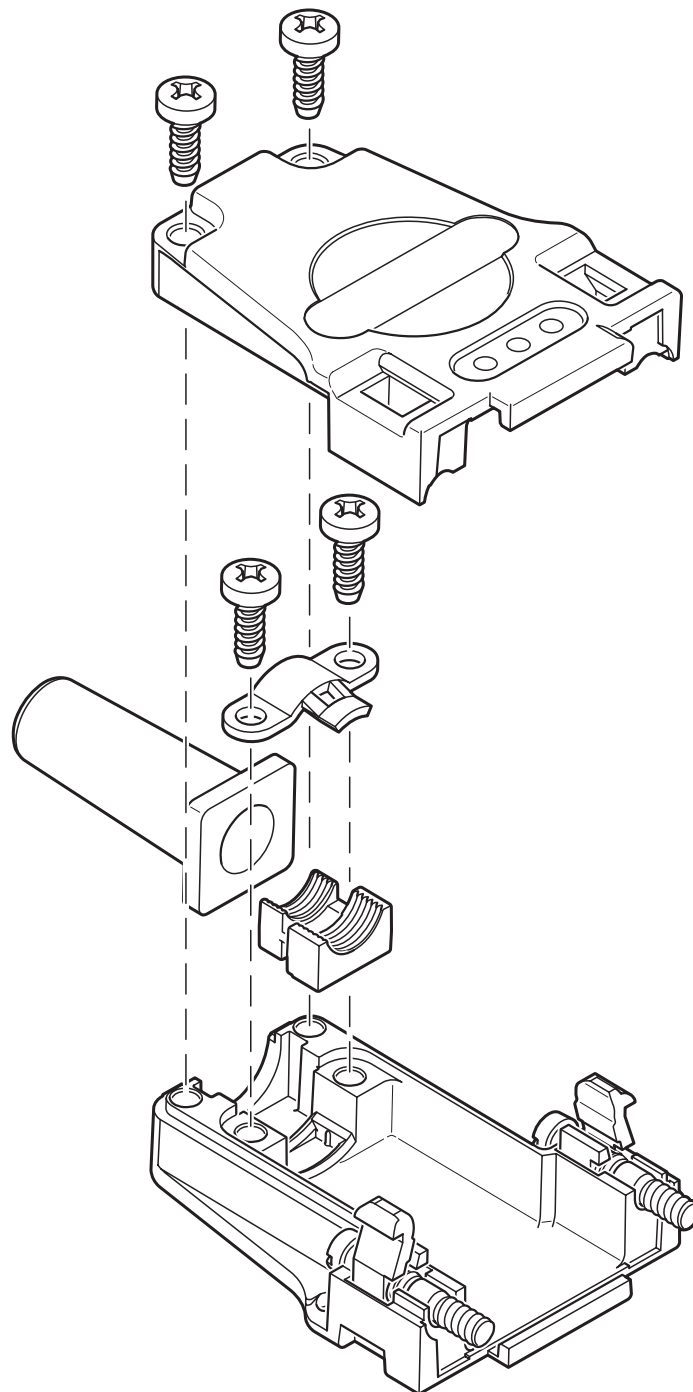
| | |
|---------------------------------|-------------------|
| Degree of protection | IP20 |
| Ambient temperature (operation) | -35 °C ... 100 °C |

Mounting

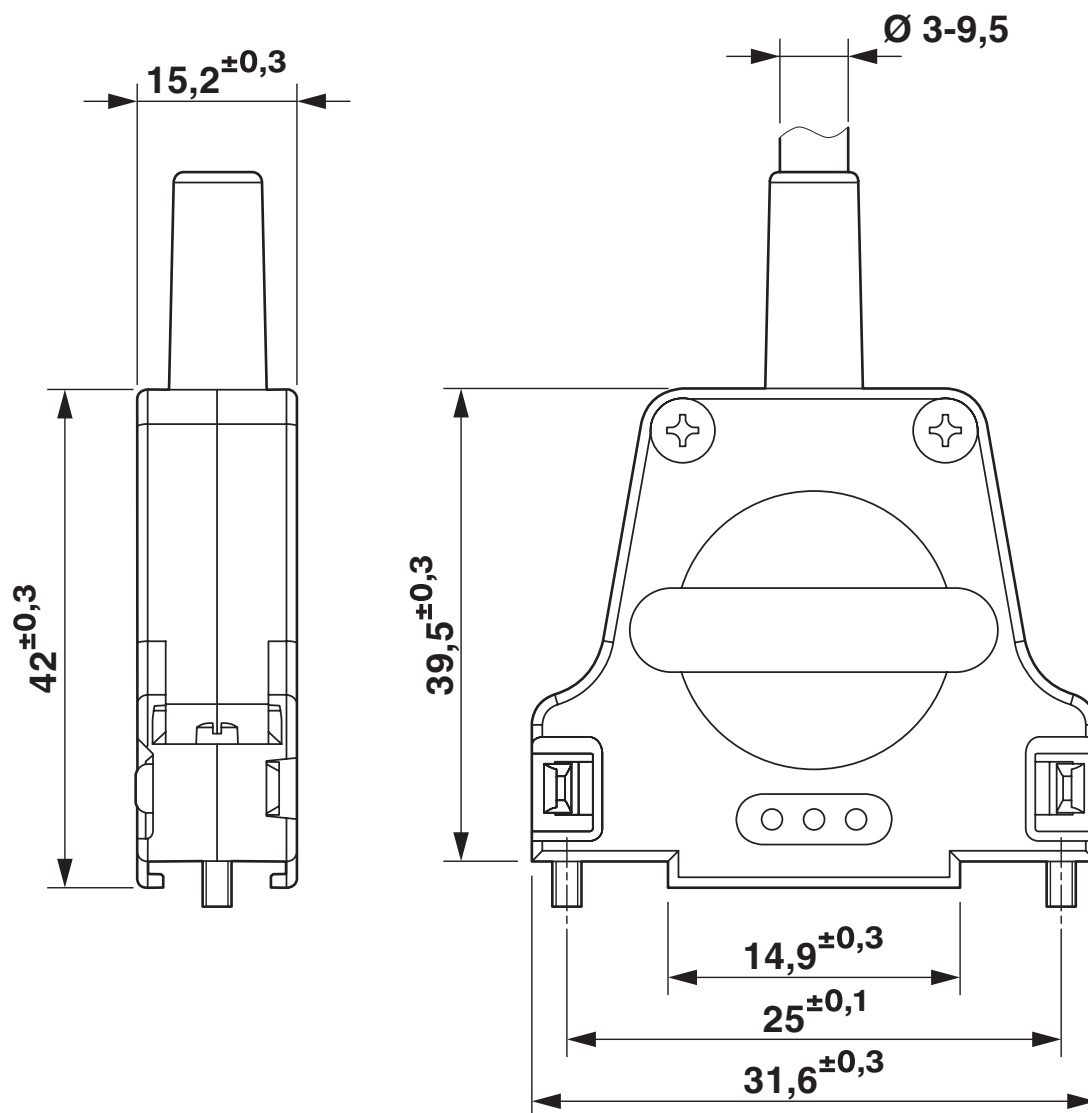
| | |
|---------------|-------------------------|
| Mounting type | Screw locking mechanism |
|---------------|-------------------------|

Drawings

Schematic diagram



Dimensional drawing



D-SUB sleeve housings

Classifications

ECLASS

| | |
|-------------|----------|
| ECLASS-11.0 | 27440202 |
| ECLASS-12.0 | 27440202 |
| ECLASS-13.0 | 27440202 |

ETIM

| | |
|----------|----------|
| ETIM 9.0 | EC000437 |
|----------|----------|

UNSPSC

| | |
|-------------|----------|
| UNSPSC 21.0 | 31261500 |
|-------------|----------|

Environmental product compliance

| | |
|---|---|
| EU RoHS | |
| Fulfills EU RoHS substance requirements | Yes |
| Exemption | 6(a), 6(a)-I |
| China RoHS | |
| Environment friendly use period (EFUP) | EFUP-50 |
| | An article-related China RoHS declaration table can be found in the download area for the respective article under "Manufacturer declaration". For all articles with EFUP-E, no China RoHS declaration table issued and required. |
| EU REACH SVHC | |
| REACH candidate substance (CAS No.) | Lead(CAS: 7439-92-1) |
| SCIP | f4b3e993-ae3f-4207-a39d-60aeb978917e |

1419722

<https://www.phoenixcontact.com/us/products/1419722>

Accessories

VS-09-ST-DSUB-EG - Contact insert

1688793

<https://www.phoenixcontact.com/us/products/1688793>



D-SUB contact insert, shell size 1, with nine signal contacts, type of contact pin, with solder cup, straight, fixing with a 3 mm hole, for panel mounting frame and sleeve housing VS-09-...

VS-09-BU-DSUB-EG - Contact insert

1688803

<https://www.phoenixcontact.com/us/products/1688803>



D-SUB contact insert, shell size 1, with nine signal contacts, type of contact socket, with solder cup, straight, fixing with a 3 mm hole, for panel mounting frame and sleeve housing VS-09-...

CUC-DST-GZNI-S/DSSC9 - D-SUB sleeve housings



1419722

<https://www.phoenixcontact.com/us/products/1419722>

VS-09-ST-DSUB-HD-EG - D-SUB contact insert

1655111

<https://www.phoenixcontact.com/us/products/1655111>



D-SUB contact insert, shell size 1, with 15 signal contacts, type of contact pin, with solder cup, straight, fixing with a 3 mm hole, for panel mounting frame VS-09-...

VS-09-BU-DSUB-HD-EG - D-SUB contact insert

1655108

<https://www.phoenixcontact.com/us/products/1655108>



D-SUB contact insert, shell size 1, with 15 signal contacts, type of contact socket, with solder cup, straight, fixing with a 3 mm hole, for panel mounting frame VS-09-...

CUC-DST-GZNI-S/DSSC9 - D-SUB sleeve housings



1419722

<https://www.phoenixcontact.com/us/products/1419722>

VS-09-ST-DSUB-CD-B - D-SUB contact support

1688858

<https://www.phoenixcontact.com/us/products/1688858>



D-SUB contact carrier, shell size 1, for nine signal contacts, type of contact pin, for crimp contacts, straight, fixing with 3 mm hole, for panel mounting frame and sleeve housing VS-09-...

VS-09-BU-DSUB-CD-B - D-SUB contact support

1688861

<https://www.phoenixcontact.com/us/products/1688861>



D-SUB contact carrier, shell size 1, for nine signal contacts, type of contact socket, for crimp contacts, straight, fixing with a 3 mm hole, for panel mounting frame and sleeve housing VS-09-...

CUC-DST-GZNI-S/DSSC9 - D-SUB sleeve housings



1419722

<https://www.phoenixcontact.com/us/products/1419722>

VS-09-ST-DSUB-HD-CD-B - D-SUB contact support

1655137

<https://www.phoenixcontact.com/us/products/1655137>



D-SUB contact carrier, shell size 1, for 15 signal contacts, type of contact pin, for crimp contacts, straight, fixing with a 3 mm hole, for panel mounting frame and sleeve housing VS-09-...

VS-09-BU-DSUB-HD-CD-B - D-SUB contact support

1655124

<https://www.phoenixcontact.com/us/products/1655124>



D-SUB contact carrier, shell size 1, for 15 signal contacts, type of contact socket, for crimp contacts, straight, fixing with a 3 mm hole, for panel mounting frame and sleeve housing VS-09-...

CUC-DST-GZNI-S/DSSC9 - D-SUB sleeve housings



1419722

<https://www.phoenixcontact.com/us/products/1419722>

VS-09-ST-DSUB-2P - D-SUB contact support

1688418

<https://www.phoenixcontact.com/us/products/1688418>

D-SUB contact carrier, shell size 1, accommodation for two combined contacts, type of contact pin, straight, fixing with a 3 mm hole, for panel mounting frame and sleeve housing VS-09-...



VS-09-BU-DSUB-2P - D-SUB contact support

1688421

<https://www.phoenixcontact.com/us/products/1688421>

D-SUB contact carrier, shell size 1, accommodation for two combined contacts, type of contact socket, straight, fixing with a 3 mm hole, for panel mounting frame and sleeve housing VS-09-...



Phoenix Contact 2024 © - all rights reserved
<https://www.phoenixcontact.com>

Phoenix Contact USA
586 Fulling Mill Road
Middletown, PA 17057, United States
(+717) 944-1300
info@phoenixcon.com