

1582288  
<https://www.phoenixcontact.com/us/products/1582288>

Please be informed that the data shown in this PDF document is generated from our online catalog. Please find the complete data in the user documentation. Our general terms of use for downloads are valid.



Panel feed-through, product family: QPD, connection method: Spade connection/ IDC connection, M25, Pin, 1 mm<sup>2</sup> ... 2.5 mm<sup>2</sup>, 690 V, 20 A, PA, gray, with QUICKON nut, coding: coded, external cable diameter: 6 mm ... 10 mm and 6 mm ... 10 mm, 2.5 mm<sup>2</sup>

Commercial data

Item number	1582288
Packing unit	1 pc
Note	Made to order (non-returnable)
Sales key	BF50
Product key	BF6ABB
Catalog page	Page 98 (PC-2011)
GTIN	4046356463430
Weight per piece (including packing)	41.5 g
Weight per piece (excluding packing)	36.4 g
Customs tariff number	85366990
Country of origin	DE

# QPD W 4X2,5 6-10 M25 FC GY - Panel feed-through



1582288

<https://www.phoenixcontact.com/us/products/1582288>

## Technical data

### Product properties

Product type	Panel feed-through
Product family	QPD
Type	QPD 4x2,5
Number of positions	4
Position marking	1, 2, 3, 4
Number of connections	10
Number of connections per position	1
Coding	coded

### Insulation characteristics

Overvoltage category	III
Degree of pollution	3

### Connection data

#### Connection technology

Connection method On the device side	Spade connection
Connection method On the field side	IDC connection
Frequency of connections between conductors of the same cross section	max. 10

#### Conductor connection

Conductor cross section flexibel	1 mm² ... 2.5 mm²
Conductor cross section solid	1 mm² ... 2.5 mm²
Connection cross section AWG	16 ... 14
Tightening torque Union nut	5 Nm
Tightening torque Locking nut	5 Nm
Wrench size Union nut	22 mm
Wrench size Locking nut	27 mm

### Dimensions

Dimensional drawing	
Width	29.6 mm
Height	29.6 mm
Length	71 mm
Diameter	29.6 mm
Wrench size	27 mm
Wrench size for mounting	27 mm

# QPD W 4X2,5 6-10 M25 FC GY - Panel feed-through



1582288

<https://www.phoenixcontact.com/us/products/1582288>

Dimensions of slip-on connection	4.8 x 0.8 mm
----------------------------------	--------------

## Electrical properties

Rated surge voltage (II/2)	8 kV
Rated surge voltage (III/2)	8 kV
Rated surge voltage (III/3)	6 kV
Rated current	20 A
Contact resistance	< 3 mΩ
rated voltage (II/2)	1000 V
rated voltage (III/2)	1000 V
Rated voltage (III/3)	690 V (With insulating sleeve PT/FS 4,8, 1670497 without insulating sleeve 250 V.)
Nominal voltage $U_N$	690 V
Nominal current $I_N$	20 A

## Mechanical properties

### Mechanical data

Insertion/withdrawal cycles	max. 50
-----------------------------	---------

## Material specifications

Material Housing	PA
Material Contact	CuZn
Material Contact surface	silver-plated
Flammability rating according to UL 94	V0
Material wire insulation	PVC/PE/TPE/rubber

## Cable/line

Structure of individual litz in acc. with VDE 0295 / smallest wire diameter	VDE 0295 class 1 to 6/min. 0.15 mm
External cable diameter	6 mm ... 10 mm
	6 mm ... 10 mm
Wire diameter including insulation	2 mm ... 3.8 mm
Position marking	1, 2, 3, 4
Cable cross section	2.5 mm <sup>2</sup>
Material wire insulation	PVC/PE/TPE/rubber

## Mounting

Mounting type	Front mounting M25
---------------	--------------------

## Environmental and real-life conditions

### Ambient conditions

Degree of protection	IP66
	IP68 (2 m / 24 h)
	IP69K

# QPD W 4X2,5 6-10 M25 FC GY - Panel feed-through



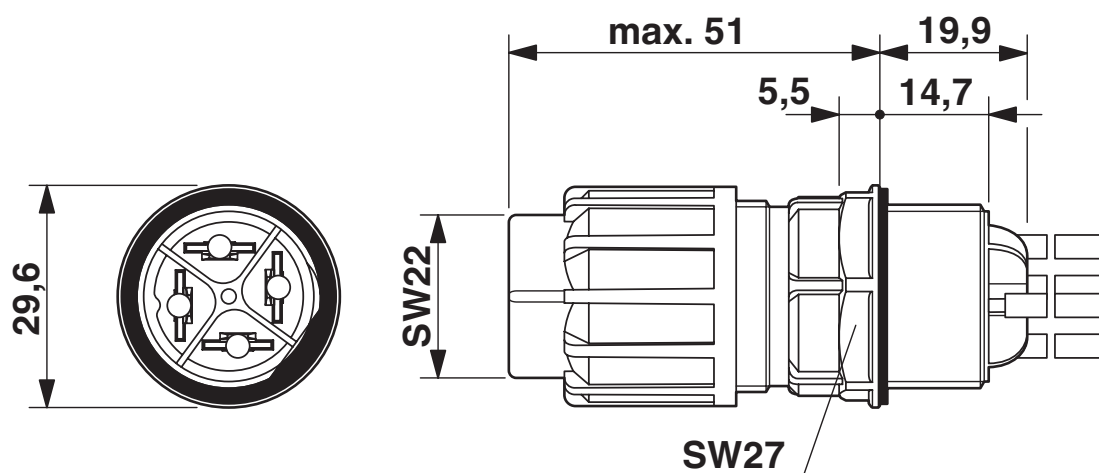
1582288

<https://www.phoenixcontact.com/us/products/1582288>

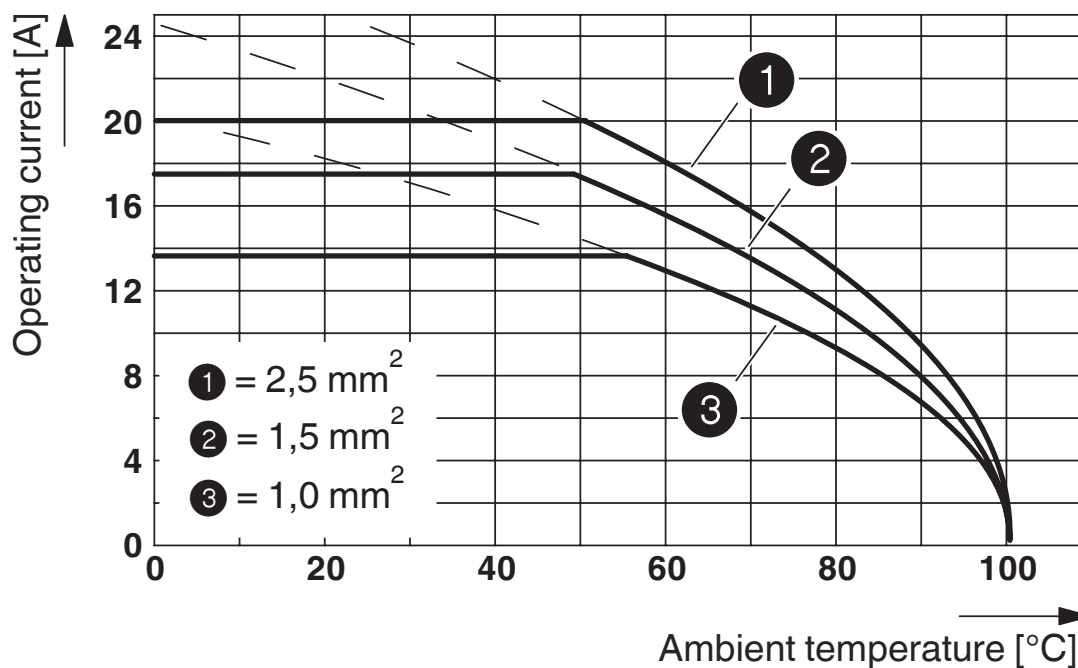
Impact strength	IK07
Ambient temperature (operation)	-40 °C ... 100 °C
Temperature when conductor connected	-5 °C ... 50 °C
Ambient temperature (storage/transport)	-40 °C ... 100 °C

## Drawings

Dimensional drawing



Diagram



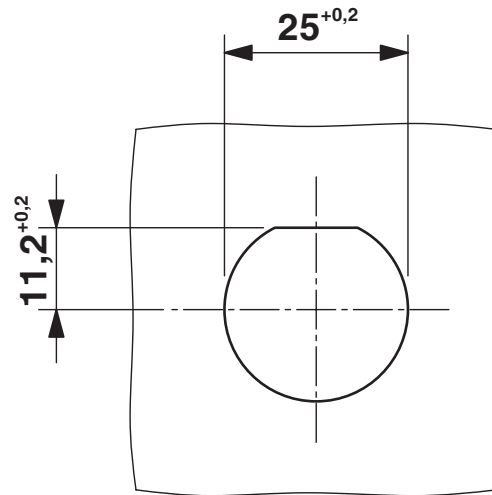
# QPD W 4X2,5 6-10 M25 FC GY - Panel feed-through

1582288

<https://www.phoenixcontact.com/us/products/1582288>



Dimensional drawing



Panel cutout

# QPD W 4X2,5 6-10 M25 FC GY - Panel feed-through



1582288

<https://www.phoenixcontact.com/us/products/1582288>

## Classifications

### ECLASS

ECLASS-11.0	27440602
ECLASS-13.0	27440602

### UNSPSC

UNSPSC 21.0	39121522
-------------	----------

Environmental product compliance

EU RoHS	
Fulfills EU RoHS substance requirements	Yes, No exemptions
China RoHS	
Environment friendly use period (EFUP)	EFUP-E
	No hazardous substances above the limits
EU REACH SVHC	
REACH candidate substance (CAS No.)	No substance above 0.1 wt%



# QPD W 4X2,5 6-10 M25 FC GY - Panel feed-through



1582288

<https://www.phoenixcontact.com/us/products/1582288>

## Accessories

### SEALING PLUG 10X16 RD - Sealing plug

1400284

<https://www.phoenixcontact.com/us/products/1400284>

Sealing plug, for threads pluggable, color: red



---

### EMLP (13X9)R - Label

0819453

<https://www.phoenixcontact.com/us/products/0819453>



Label, Roll, white, unlabeled, can be labeled with: THERMOMARK E.300 (D)/600 (D), THERMOMARK ROLL 2.0, THERMOMARK ROLL, THERMOMARK ROLL X1, THERMOMARK ROLLMASTER 300/600, THERMOMARK X1.2, mounting type: adhesive, lettering field size: 13 x 9 mm, Number of individual labels: 500

## QPD W 4X2,5 6-10 M25 FC GY - Panel feed-through

1582288

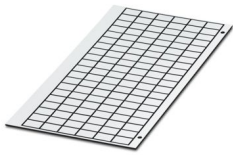
<https://www.phoenixcontact.com/us/products/1582288>



### GPE 13X 9 WH - Engraving material

0806932

<https://www.phoenixcontact.com/us/products/0806932>



Engraving material, Sheet, white, unlabeled, can be labeled with: PLOTMARK, ENGRAVING UNIT, CMS-P1-PLOTTER, P1 ENGRAVING UNIT, mounting type: adhesive, lettering field size: 13 x 9 mm, Number of individual labels: 120

---

### Q-MU M25 - Nut

1640715

<https://www.phoenixcontact.com/us/products/1640715>

Nut (plastic) to lock the contact carrier from the inside of the device



## QPD W 4X2,5 6-10 M25 FC GY - Panel feed-through

1582288

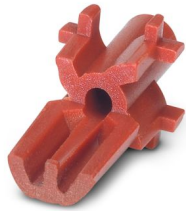
<https://www.phoenixcontact.com/us/products/1582288>



### CP-QPD - Coding profile

1582459

<https://www.phoenixcontact.com/us/products/1582459>



Coding profile red, for pushing into the QUICKON dome and connector, can be positioned in 90° steps.

---

### KV-DI-PG16-1XASI - Seal

1582462

<https://www.phoenixcontact.com/us/products/1582462>



Seal for one AS-i line, 17.2 x 9 mm, from NBR, black, for IP65/67 degree of protection

## QPD W 4X2,5 6-10 M25 FC GY - Panel feed-through

1582288

<https://www.phoenixcontact.com/us/products/1582288>



### KV-DI-PG16-2XASI - Seal

1582464

<https://www.phoenixcontact.com/us/products/1582464>



Seal for two AS-i lines, 17.2 x 9 mm, from NBR, black, for IP65/67 degree of protection

---

### PT/FS 4,8 - Insulating sleeve

1670497

<https://www.phoenixcontact.com/us/products/1670497>



Insulating sleeve, as touch protection, for 4.8 mm slip-on sleeves, slide onto the conductor before

# QPD W 4X2,5 6-10 M25 FC GY - Panel feed-through



1582288

<https://www.phoenixcontact.com/us/products/1582288>

## QSS 22 - Socket wrench

1670206

<https://www.phoenixcontact.com/us/products/1670206>



Allen wrench, for loosening and fastening the QUICKON union nut, WAF 22 mm

---

Phoenix Contact 2024 © - all rights reserved

<https://www.phoenixcontact.com>

Phoenix Contact USA  
586 Fulling Mill Road  
Middletown, PA 17057, United States  
(+717) 944-1300  
[info@phoenixcon.com](mailto:info@phoenixcon.com)