

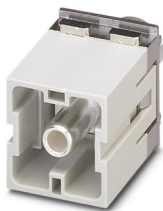
HC-M-HS 200/40-MOD-ST-PE - Contact insert module



1637184

<https://www.phoenixcontact.com/us/products/1637184>

Please be informed that the data shown in this PDF document is generated from our online catalog. Please find the complete data in the user documentation. Our general terms of use for downloads are valid.



HEAVYCON contact insert module, connector, 1-pos., for axial screw connection, 200 A, 25 mm² ... 40 mm², for the PE connection

Commercial data

Item number	1637184
Packing unit	1 pc
Note	Made to order (non-returnable)
Sales key	BF62
Product key	BF7ACB
Catalog page	Page 551 (C-4-2015)
GTIN	4046356095235
Weight per piece (including packing)	98.5 g
Weight per piece (excluding packing)	98.5 g
Customs tariff number	85366990
Country of origin	DE

Technical data

Notes

General	For HEAVYCON HC-B6 to B48 housing (housing height: min. 72 mm), HC-M-MHR... hinged retaining frame required, axial connection for 5 mm Allen key
---------	--

Mounting

Assembly note	<ul style="list-style-type: none"> - Use only flexible conductors, - Connection of wires with 5 mm an Allen wrench, - Housing height $h \geq 72$ mm, - Connectors may only be operated without load/voltage. <p>Note on axial connection technology: Only for stranded wires. The specified conductor cross sections refer to the geometric cross section of the cable used. Use of cables with a geometric cross section that differs greatly from the nominal cross section of the cable should be checked before use. The wiring space for axial screw technology is designed for fine strand cables according to VDE 0295 Class 5. Deviating cable structures (e.g., Class 6 cables) should be checked before use.</p> <p>Assembly instructions Before assembly, ensure that the tapered screw is turned back all the way (chamber is open). The cables must not be twisted. The wires should be inserted as far as they will go into the contact chamber (until the insulation touches the contact). Hold the wires in position and use the socket wrench to tighten. The used wire end should be cut off before connecting again. The connection screw may only be retightened once to prevent the litz wires from breaking. To prevent damage to the contact, the wire/cable should be mechanically intercepted at an appropriate distance from the connection point (e.g., by using a plate cutout). DIN VDE 0100-520:2003-06 contains information on how to do this correctly. The module cannot be used simultaneously with HC-B..-TMB-SD-IP65 and HC-B..-TMS-SD-IP65 protective covers.</p> <p>PE mounting plate The PE plate must be pressed hard against the swing frame using the 4 screws. First loosen the 4 screws of the PE plate and then tighten them again once the module is fixed in the swing frame.</p>
Hexagonal socket	SW 5

Product properties

Product type	Modular contact insert
Series	HC-M-HS
Application	PE transmission
Number of positions	1
Connection profile	PE
Number of module slots	2

Connection data

HC-M-HS 200/40-MOD-ST-PE - Contact insert module



1637184

<https://www.phoenixcontact.com/us/products/1637184>

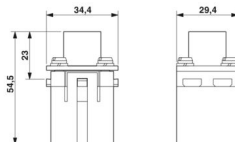
Connection technology

Connection technology	Axial screw connection
-----------------------	------------------------

Conductor connection

Conductor cross section	25 mm ² ... 40 mm ² (The cross section specification refers to the geometric cross section of the cable used)
Connection cross section AWG	3 ... 2
Tightening torque	8 Nm (25 mm ² ... 35 mm ²) 9 Nm (40 mm ²)
Stripping length of the individual wire	16 mm

Dimensions

Dimensional drawing	
Width	34.2 mm
Height	54.5 mm
Length	29.4 mm

Mechanical characteristics

Minimum housing height	72 mm
------------------------	-------

Electrical properties

Rated current	200 A
---------------	-------

Mechanical properties

Mechanical data

Insertion/withdrawal cycles	≥ 500
-----------------------------	-------

Material specifications

Flammability rating according to UL 94	V0
Contact material	Copper alloy
Contact surface material	Ag
Contact carrier material	PC

Environmental and real-life conditions

Ambient conditions

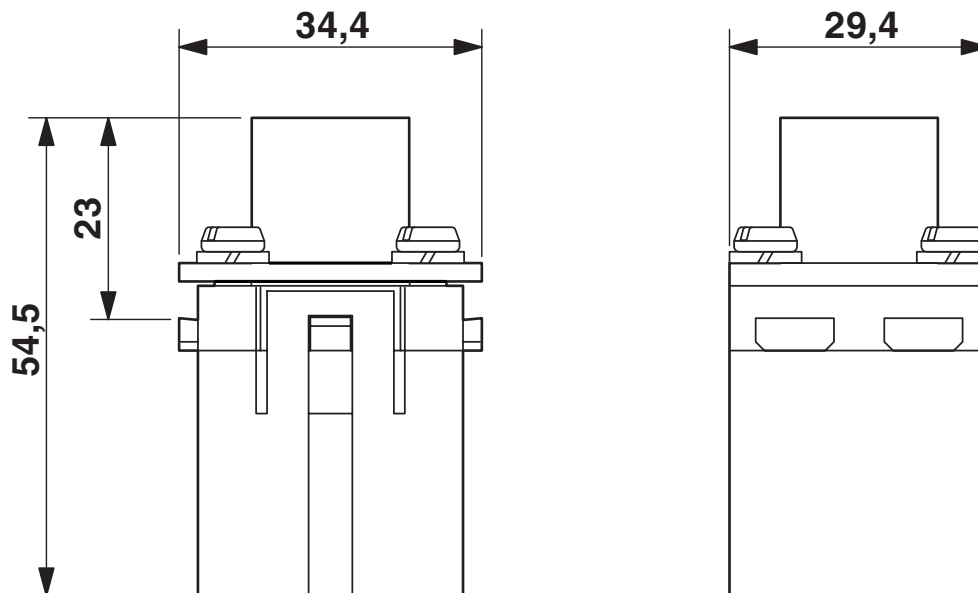
Ambient temperature (operation)	-40 °C ... 125 °C
---------------------------------	-------------------

1637184

<https://www.phoenixcontact.com/us/products/1637184>

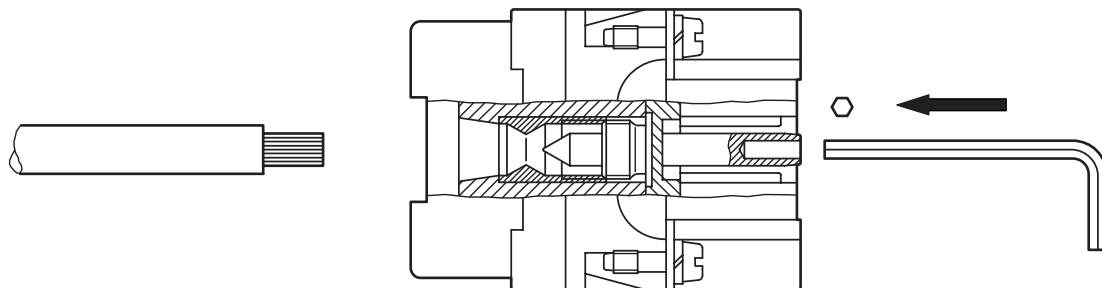
Drawings

Dimensional drawing



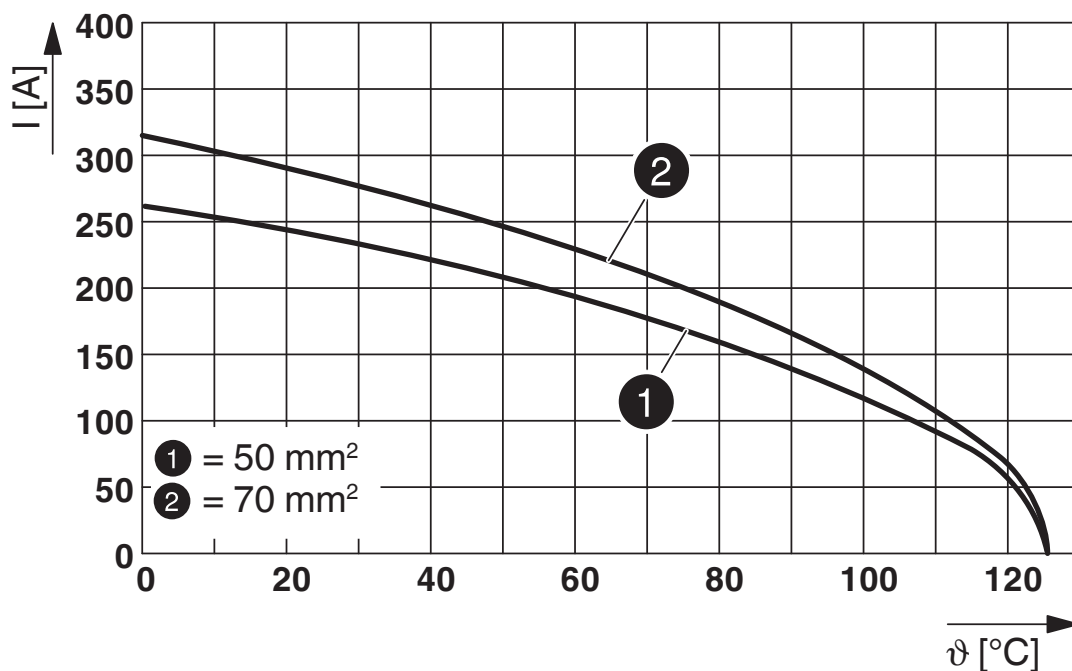
Male insert

Schematic diagram



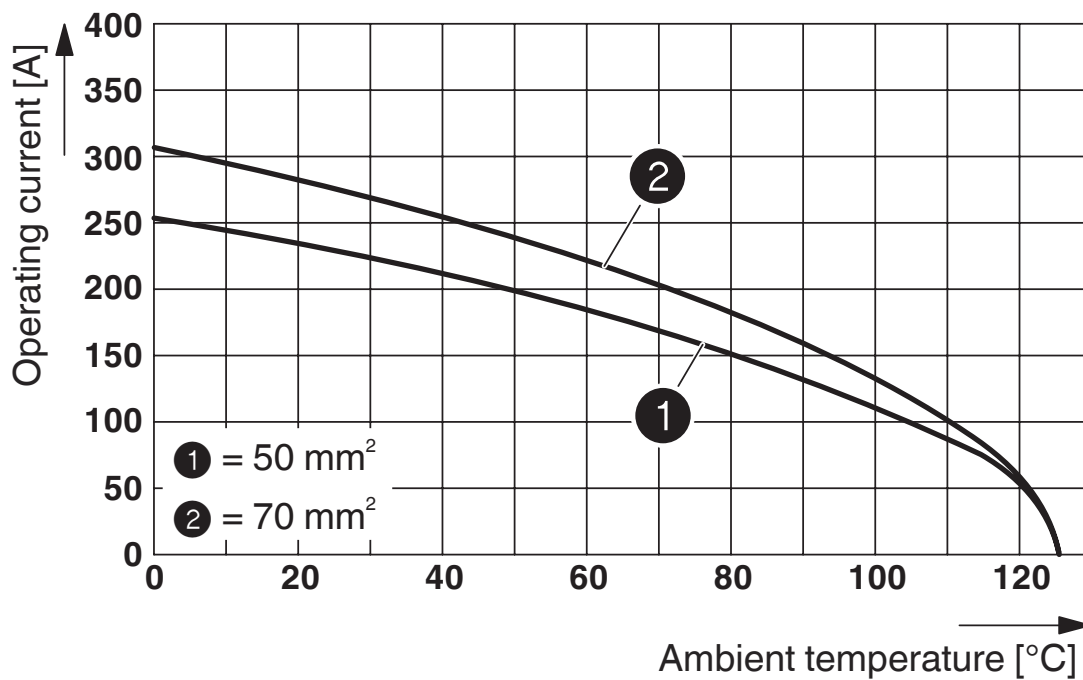
Axial screw connection

Diagram



Two modules in B24 housing

Diagram



Three modules in B24 housing

HC-M-HS 200/40-MOD-ST-PE - Contact insert module



1637184

<https://www.phoenixcontact.com/us/products/1637184>

Phoenix Contact 2024 © - all rights reserved
<https://www.phoenixcontact.com>

Phoenix Contact USA
586 Fulling Mill Road
Middletown, PA 17057, United States
(+717) 944-1300
info@phoenixcon.com