

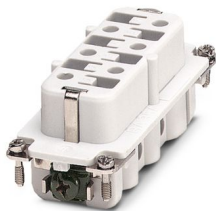
HC-HS 6-EBUS - Contact insert



1773132

<https://www.phoenixcontact.com/us/products/1773132>

Please be informed that the data shown in this PDF document is generated from our online catalog. Please find the complete data in the user documentation. Our general terms of use for downloads are valid.



HEAVYCON female insert, HS6 series, 6-pos., screw connection

Commercial data

Item number	1773132
Packing unit	1 pc
Note	Made to order (non-returnable)
Sales key	BF61
Product key	BF7ABI
Catalog page	Page 459 (C-4-2013)
GTIN	4017918037642
Weight per piece (including packing)	106.81 g
Weight per piece (excluding packing)	103.12 g
Customs tariff number	85366990
Country of origin	DE

HC-HS 6-EBUS - Contact insert



1773132

<https://www.phoenixcontact.com/us/products/1773132>

Technical data

Notes

General	For housing HC-B16
---------	--------------------

Mounting

Assembly note	Connectors may be operated only when there is no load/voltage.
---------------	--

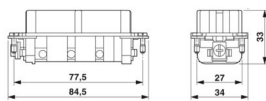
Product properties

Product type	Contact insert with a fixed no. of positions
Series	HC-HS
Type	B16 B32
Number of positions	6
Connection profile	6+PE
Contact numbering	1 - 6

Insulation characteristics

Overvoltage category	III
Degree of pollution	3

Dimensions

Dimensional drawing	
Width	34 mm
Height	33 mm
Length	84.5 mm
Drill hole distance, horizontal	77.5 mm

Connection data

Connection technology

Connection technology	Screw connection
Connection in acc. with standard	IEC / EN

Conductor connection

Conductor cross section	0.5 mm ² ... 6 mm ²
Connection cross section AWG	20 ... 10
Tightening torque	1.2 Nm
Stripping length of the individual wire	10 mm

Electrical properties

HC-HS 6-EBUS - Contact insert



1773132

<https://www.phoenixcontact.com/us/products/1773132>

Rated voltage (III/3)	500 V
Rated voltage for power contacts	400/690 V
Rated surge voltage	6 kV
Rated current	35 A

Mechanical properties

Mechanical data

Insertion/withdrawal cycles	≥ 500
-----------------------------	-------

Material specifications

Flammability rating according to UL 94	V0
Contact material	Copper alloy
Contact surface material	Ag
Contact carrier material	PA

Environmental and real-life conditions

Ambient conditions

Ambient temperature (operation)	-40 °C ... 125 °C (including heating up of contacts)
---------------------------------	--

Standards and regulations

Constructional and testing regulations	DIN VDE 0627/86
	DIN VDE 0110/02.79
	DIN VDE 0110-1/04.97
	IEC 60664-1, DIN IEC 60512
Tests	DIN VDE 0627/86
	DIN VDE 0110/02.79
	DIN VDE 0110-1/04.97
	IEC 60664-1, DIN IEC 60512

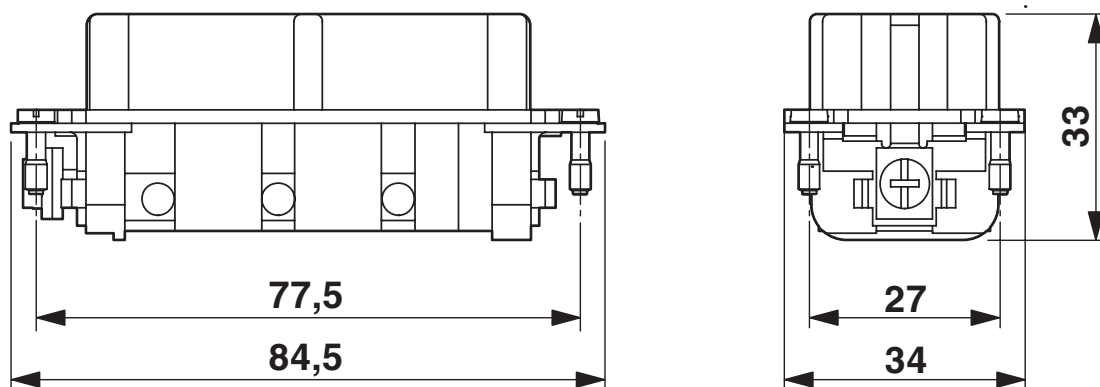
HC-HS 6-EBUS - Contact insert

1773132

<https://www.phoenixcontact.com/us/products/1773132>

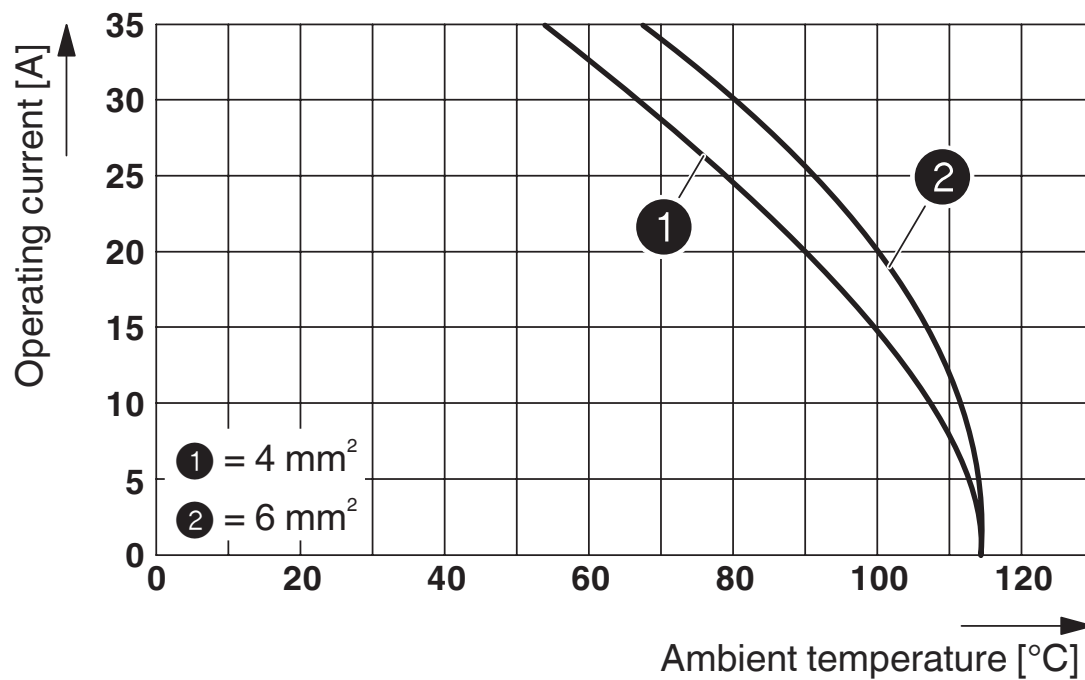
Drawings

Dimensional drawing



Female insert

Diagram



Derating diagram: HC-HS...S series

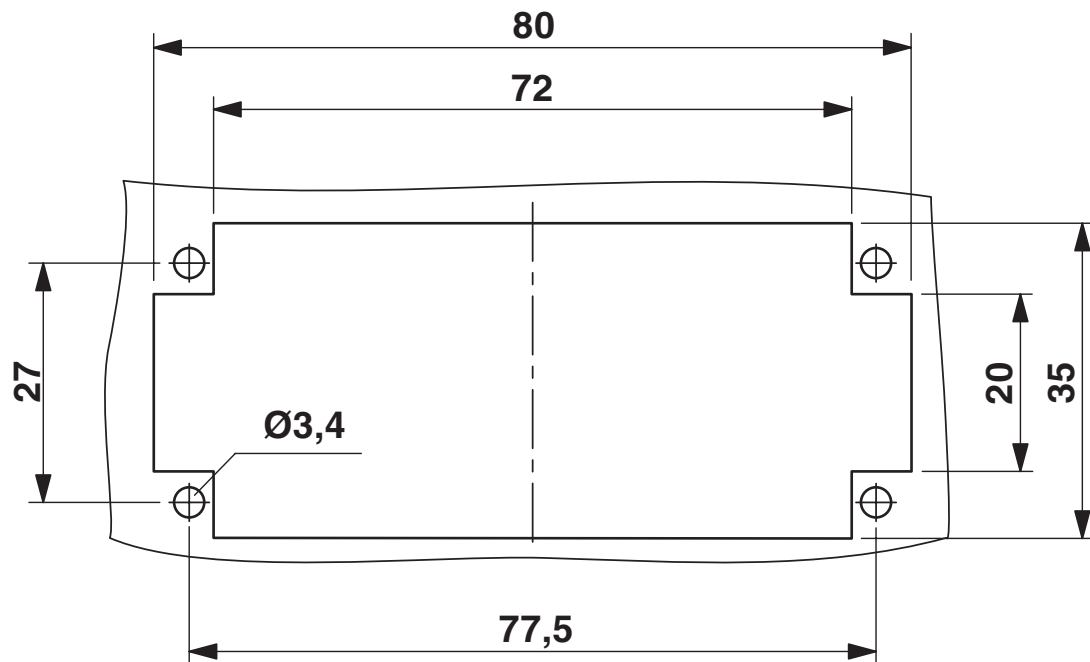
HC-HS 6-EBUS - Contact insert

1773132

<https://www.phoenixcontact.com/us/products/1773132>



Dimensional drawing

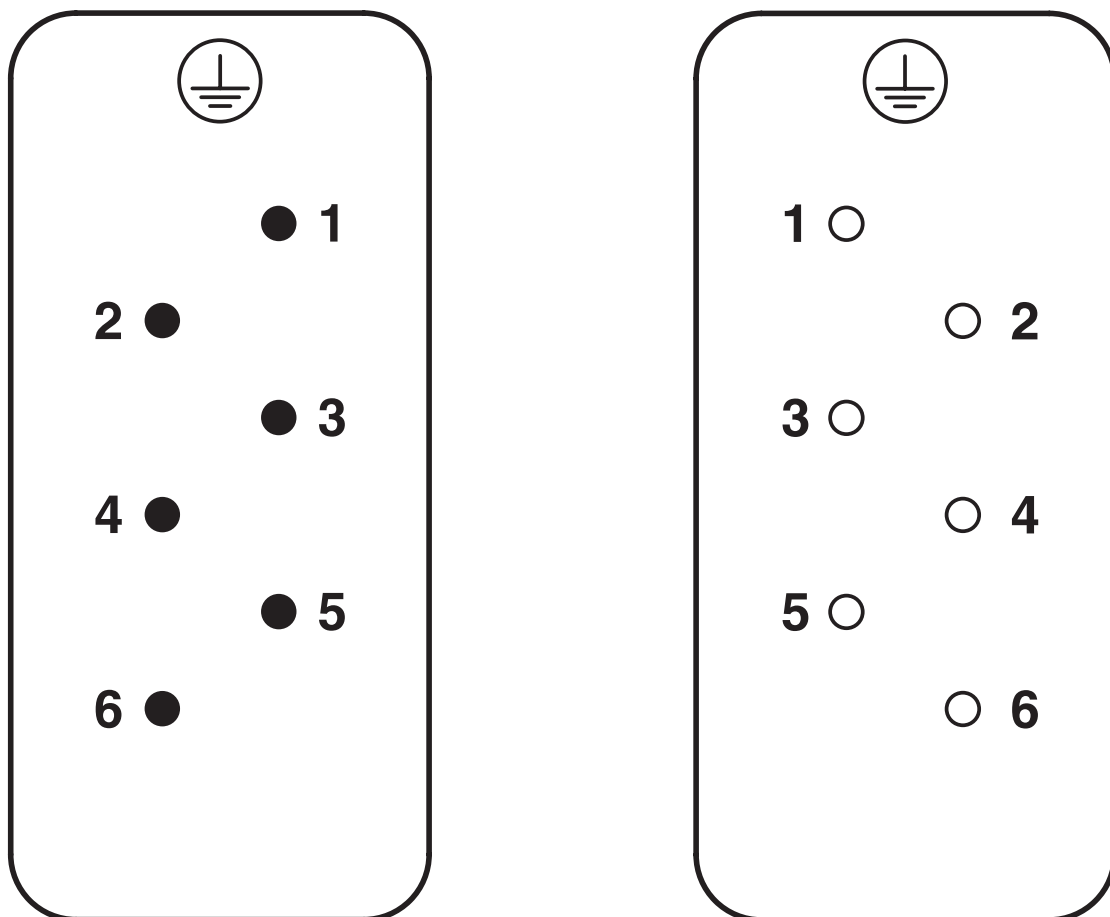


Mounting cutout

1773132

<https://www.phoenixcontact.com/us/products/1773132>

Schematic diagram



Connector pin assignment, connection side

HC-HS 6-EBUS - Contact insert

1773132

<https://www.phoenixcontact.com/us/products/1773132>



Classifications

ECLASS

ECLASS-11.0	27440205
ECLASS-13.0	27440205

Environmental product compliance

China RoHS	
Environment friendly use period (EFUP)	EFUP-50
	An article-related China RoHS declaration table can be found in the download area for the respective article under "Manufacturer declaration". For all articles with EFUP-E, no China RoHS declaration table issued and required.
EU REACH SVHC	
REACH candidate substance (CAS No.)	No substance above 0.1 wt%

Phoenix Contact 2024 © - all rights reserved
<https://www.phoenixcontact.com>

Phoenix Contact USA
586 Fulling Mill Road
Middletown, PA 17057, United States
(+717) 944-1300
info@phoenixcon.com