

VC-AR2/3M - Panel-mount frame

1852985

<https://www.phoenixcontact.com/us/products/1852985>



Please be informed that the data shown in this PDF document is generated from our online catalog. Please find the complete data in the user documentation. Our general terms of use for downloads are valid.



Panel-mount frame, Range of articles: VARIOCON, design: VC2, housing material: Polyamide, 2 x 1852862 VC-AF for each connector

Your advantages

- Proven COMBICON technology
- Universal connection
- Can be keyed to prevent incorrect connection

Commercial data

Item number	1852985
Packing unit	5 pc
Minimum order quantity	1 pc
Sales key	AB01
Product key	ABLABD
Catalog page	Page 25 (C-2-2013)
GTIN	4017918134341
Weight per piece (including packing)	12.08 g
Weight per piece (excluding packing)	12.24 g
Customs tariff number	85389099
Country of origin	PL

VC-AR2/3M - Panel-mount frame

1852985

<https://www.phoenixcontact.com/us/products/1852985>



Technical data

Notes

General	2 x 1852862 VC-AF for each connector
Safety note	
Safety note	<p>WARNING: The connectors may not be plugged in or disconnected under load. Ignoring the warning or improper use may damage persons and/or property.</p> <ul style="list-style-type: none">• WARNING: Commission properly functioning products only. The products must be regularly inspected for damage. Decommission defective products immediately. Replace damaged products. Repairs are not possible.• WARNING: Only electrically qualified personnel may install and operate the product. They must observe the following safety notes. The qualified personnel must be familiar with the basics of electrical engineering. They must be able to recognize and prevent danger. The relevant symbol on the packaging indicates that only personnel familiar with electrical engineering are allowed to install and operate the product.• The products are suitable for applications in plant, controller, and electrical device engineering.• When operating the connectors in outdoor applications, they must be separately protected against environmental influences.• Assembled products may not be manipulated or improperly opened.• Only use mating connectors that are specified in the technical data of the standards listed (e.g. the ones listed in the product accessories online at phoenixcontact.com/products).• When using the product in direct connection with third-party manufacturers, the user is responsible.• For operating voltages > 50 V AC, conductive connector housings must be grounded• Ensure that the protective or functional ground has been properly connected.• VDE 0100/1.97 § 411.1.3.2 and DIN EN 60 204/11.98 § 14.1.3 are applicable when combining several circuits in a cable and/or connector• Observe the corresponding technical data. You will find information:<ul style="list-style-type: none">o On the producto On the packing labelo In the supplied documentationo Online at phoenixcontact.com/products under the product• Only use tools recommended by Phoenix Contact• The installation notes/Design In documents online on the download page at phoenixcontact.com/products must be observed for this product.• Use a protective cap to protect connectors that are not in use. The suitable accessories are available online in the accessory section of the product at phoenixcontact.com/products• Operate the connector only when it is fully plugged in.

VC-AR2/3M - Panel-mount frame

1852985

<https://www.phoenixcontact.com/us/products/1852985>



- Ensure that when laying the cable, the tensile load on the connectors does not exceed the upper limit specified in the standards.
- Observe the minimum bending radius of the cable. Lay the cable without twisting it.
- The connector warms up in normal operation. Depending on the ambient conditions, the surface of the connector can continue to warm up. In this case, the user is responsible for posting warnings (e.g. DIN EN ISO 13732-1:2008-12).

Product properties

Product type	Panel-mount frame
Product family	VARIOCON
Series	VC-M
Type	VC2
Number of module slots	3

Data management status

Article revision	09
------------------	----

Dimensions

Dimensional drawing	
Width	65.6 mm
Height	25.5 mm
Depth	7.1 mm
Length	17.1 mm

Material specifications

Color of the housing part	black
Material	PA-GF
Material	Polyamide
Flammability rating according to UL 94	V0
Insulating material group	CTI 600
Housing material	Polyamide
Material of locking screw	Stainless steel

Environmental and real-life conditions

Ambient conditions

Ambient temperature (operation)	-40 °C ... 125 °C
---------------------------------	-------------------

VC-AR2/3M - Panel-mount frame

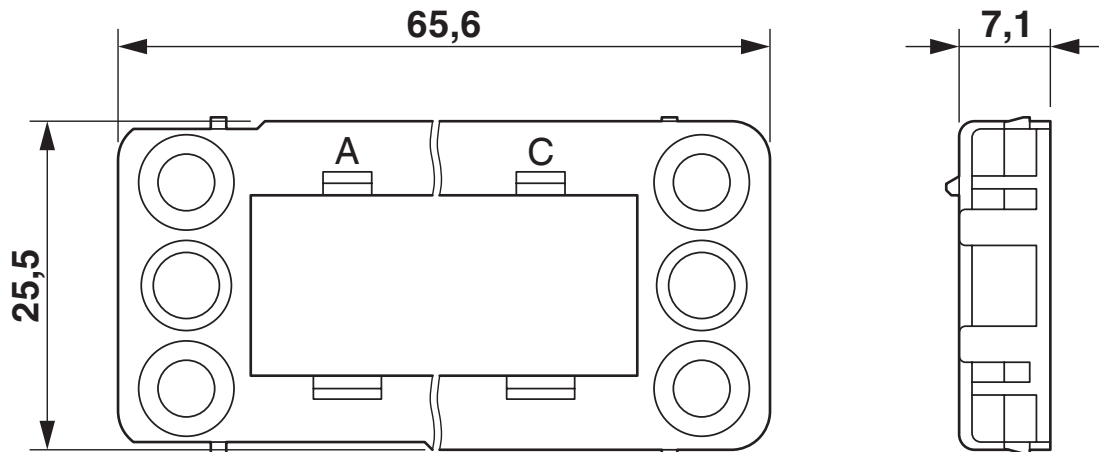
1852985

<https://www.phoenixcontact.com/us/products/1852985>



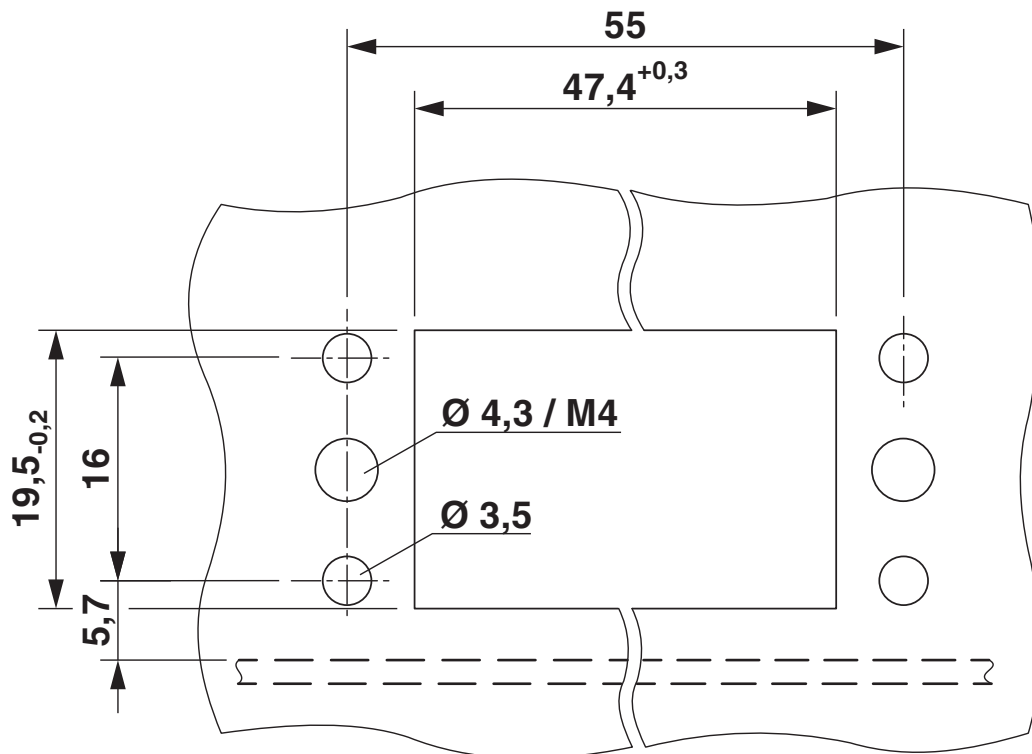
Drawings

Dimensional drawing



Panel mounting frame dimensional drawing

Dimensional drawing



a - PCB

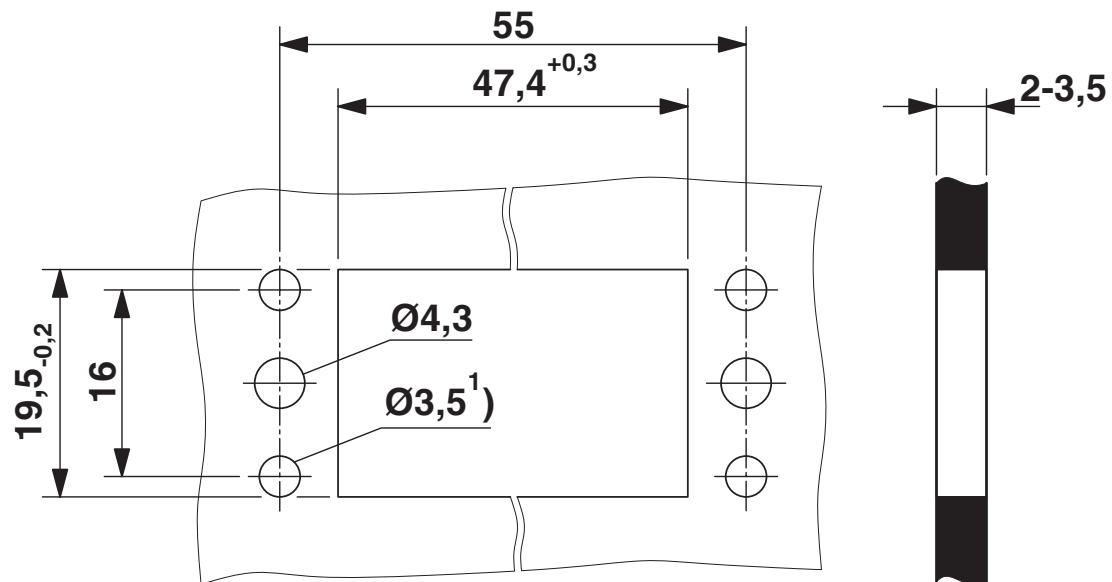
VC-AR2/3M - Panel-mount frame

1852985

<https://www.phoenixcontact.com/us/products/1852985>



Dimensional drawing



Housing cutout

VC-AR2/3M - Panel-mount frame

1852985

<https://www.phoenixcontact.com/us/products/1852985>



Classifications

ECLASS

ECLASS-11.0	27440210
ECLASS-12.0	27440210
ECLASS-13.0	27440210

ETIM

ETIM 9.0	EC002310
----------	----------

UNSPSC

UNSPSC 21.0	39121400
-------------	----------

VC-AR2/3M - Panel-mount frame

1852985

<https://www.phoenixcontact.com/us/products/1852985>



Environmental product compliance

EU RoHS	
Fulfills EU RoHS substance requirements	Yes, No exemptions
China RoHS	
Environment friendly use period (EFUP)	EFUP-E
	No hazardous substances above the limits
EU REACH SVHC	
REACH candidate substance (CAS No.)	No substance above 0.1 wt%

VC-AR2/3M - Panel-mount frame

1852985

<https://www.phoenixcontact.com/us/products/1852985>



Accessories

VC-AF - Panel-mount flange

1852862

<https://www.phoenixcontact.com/us/products/1852862>



Panel mounting flange for screw locking, for mounting contact insert modules, for a panel thickness of 1 - 5 mm

VC-SD-A2 - Protective cover

1886773

<https://www.phoenixcontact.com/us/products/1886773>



Protective cover, design: VC2, housing material: PA 6, color: gray

VC-AR2/3M - Panel-mount frame

1852985

<https://www.phoenixcontact.com/us/products/1852985>



VC-AR2-EMV - Panel-mount frame

1853227

<https://www.phoenixcontact.com/us/products/1853227>



Panel-mount frame, Range of articles: VARIOCON, design: VC2, housing material: Copper alloy, For painted surfaces with conductive panel cutout

VC-AMS-FO - Contact insert

1885240

<https://www.phoenixcontact.com/us/products/1885240>



Contact insert module, for panel mounting frames for accommodating 2 optical fibers VC-FSMA-M ... Quick mounting connectors

VC-AR2/3M - Panel-mount frame

1852985

<https://www.phoenixcontact.com/us/products/1852985>



VC-AMLV 6 - Contact insert

1884872

<https://www.phoenixcontact.com/us/products/1884872>



Contact insert, Range of articles: VARIOCON, housing material: Polyamide, color: light grey, number of positions: 6, rated voltage: 250, rated current: 10 A, Connection method: PCB connection, Contact connection type: Pin, Connectors may only be connected/disconnected when under no load.

VC-AML 6 - Contact insert

1853531

<https://www.phoenixcontact.com/us/products/1853531>



Contact insert, Range of articles: VARIOCON, housing material: Polyamide, color: light grey, number of positions: 6, rated voltage: 250, rated current: 10 A, Connection method: PCB connection, Contact connection type: Pin, Connectors may only be connected/disconnected when under no load.

VC-AR2/3M - Panel-mount frame

1852985

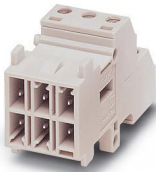
<https://www.phoenixcontact.com/us/products/1852985>



VC-AMS 6 - Contact insert

1854019

<https://www.phoenixcontact.com/us/products/1854019>

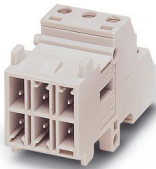


Contact insert, Range of articles: VARIOCON, housing material: Polyamide, color: light grey, number of positions: 6, min. conductor cross section: 0.14 mm^2 , max. conductor cross section: 1.5 mm^2 , rated voltage: 250, rated current: 10 A, Connection method: Screw connection, Contact connection type: Pin, Connectors may only be connected/disconnected when under no load.

VC-AMS 6-PE - Contact insert

1583555

<https://www.phoenixcontact.com/us/products/1583555>



Contact insert, Range of articles: VARIOCON, housing material: Polyamide, color: light grey, number of positions: 6, min. conductor cross section: 0.14 mm^2 , max. conductor cross section: 1.5 mm^2 , rated voltage: 250, rated current: 10 A, Connection method: Screw connection, Contact connection type: Pin, Connectors may only be connected/disconnected when under no load.

VC-AR2/3M - Panel-mount frame

1852985

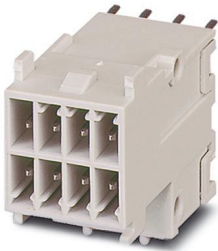
<https://www.phoenixcontact.com/us/products/1852985>



VC-AMLV 8 - Contact insert

1884885

<https://www.phoenixcontact.com/us/products/1884885>

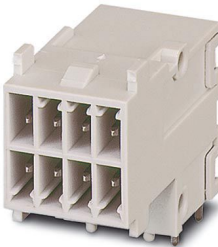


Contact insert, Range of articles: VARIOCON, housing material: Polyamide, color: light grey, number of positions: 8, rated voltage: 160, rated current: 10 A, Connection method: PCB connection, Contact connection type: Pin, Connectors may only be connected/disconnected when under no load.

VC-AML 8 - Contact insert

1852833

<https://www.phoenixcontact.com/us/products/1852833>



Contact insert, Range of articles: VARIOCON, housing material: Polyamide, color: light grey, number of positions: 8, rated voltage: 160, rated current: 10 A, Connection method: PCB connection, Contact connection type: Pin, Connectors may only be connected/disconnected when under no load.

VC-AR2/3M - Panel-mount frame



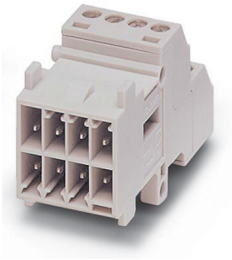
1852985

<https://www.phoenixcontact.com/us/products/1852985>

VC-AMS 8 - Contact insert

1854022

<https://www.phoenixcontact.com/us/products/1854022>

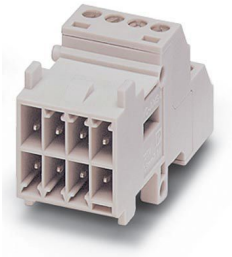


Contact insert, Range of articles: VARIOCON, housing material: Polyamide, color: light grey, number of positions: 8, min. conductor cross section: 0.14 mm^2 , max. conductor cross section: 1.5 mm^2 , rated voltage: 160, rated current: 10 A, Connection method: Screw connection, Contact connection type: Pin, Connectors may only be connected/disconnected when under no load.

VC-AMS 8-PE - Contact insert

1583568

<https://www.phoenixcontact.com/us/products/1583568>



Contact insert, Range of articles: VARIOCON, housing material: Polyamide, color: light grey, number of positions: 8, min. conductor cross section: 0.14 mm^2 , max. conductor cross section: 1.5 mm^2 , rated voltage: 160, rated current: 10 A, Connection method: Screw connection, Contact connection type: Pin, Connectors may only be connected/disconnected when under no load.

VC-AR2/3M - Panel-mount frame

1852985

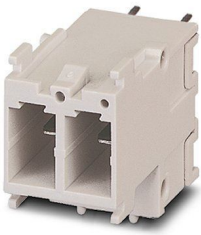
<https://www.phoenixcontact.com/us/products/1852985>



VC-AMLV 2 - Contact insert

1884979

<https://www.phoenixcontact.com/us/products/1884979>

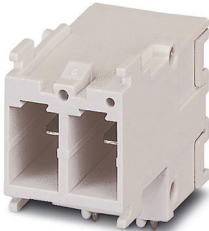


Contact insert, Range of articles: VARIOCON, housing material: Polyamide, color: light grey, number of positions: 2, rated voltage: 400, rated current: 20 A, Connection method: PCB connection, Contact connection type: Pin, Connectors may only be connected/disconnected when under no load.

VC-AML 2 - Contact insert

1852859

<https://www.phoenixcontact.com/us/products/1852859>



Contact insert, Range of articles: VARIOCON, housing material: Polyamide, color: light grey, number of positions: 2, rated voltage: 400, rated current: 20 A, Connection method: PCB connection, Contact connection type: Pin, Connectors may only be connected/disconnected when under no load.

VC-AR2/3M - Panel-mount frame



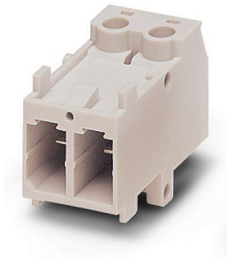
1852985

<https://www.phoenixcontact.com/us/products/1852985>

VC-AMS 2 - Contact insert

1853528

<https://www.phoenixcontact.com/us/products/1853528>



Contact insert, Range of articles: VARIOCON, housing material: Polyamide, color: light grey, number of positions: 2, min. conductor cross section: 0.25 mm^2 , max. conductor cross section: 4 mm^2 , rated voltage: 400, rated current: 20 A, Connection method: Screw connection, Contact connection type: Pin, Connectors may only be connected/disconnected when under no load.

VC-AMS 2-PE - Contact insert

1583542

<https://www.phoenixcontact.com/us/products/1583542>



Contact insert, Range of articles: VARIOCON, housing material: Polyamide, color: light grey, number of positions: 2, min. conductor cross section: 0.25 mm^2 , max. conductor cross section: 4 mm^2 , rated voltage: 400, rated current: 20 A, Connection method: Screw connection, Contact connection type: Pin, Connectors may only be connected/disconnected when under no load.

VC-AR2/3M - Panel-mount frame

1852985

<https://www.phoenixcontact.com/us/products/1852985>



VC-AML 4 - Contact insert

1607509

<https://www.phoenixcontact.com/us/products/1607509>



Contact insert, Range of articles: VARIOCON, design: VC2, housing material: PA, color: light grey, number of positions: 4, rated voltage: 690, rated current: 63 A, Connection method: PCB connection, Contact connection type: Pin, Connectors may only be connected/disconnected when under no load.

VC-AML 4-PEA - Contact insert

1607516

<https://www.phoenixcontact.com/us/products/1607516>



Contact insert, Range of articles: VARIOCON, design: VC2, housing material: PA, color: light grey, number of positions: 4, rated voltage: 690, rated current: 63 A, Connection method: PCB connection, Contact connection type: Pin, Connectors may only be connected/disconnected when under no load.

VC-AR2/3M - Panel-mount frame

1852985

<https://www.phoenixcontact.com/us/products/1852985>



VC-AMS 4 - Contact insert

1607745

<https://www.phoenixcontact.com/us/products/1607745>



Contact insert, Range of articles: VARIOCON, design: VC2, housing material: PA 6.6, color: light grey, number of positions: 4, min. conductor cross section: 0.5 mm², max. conductor cross section: 16 mm², rated voltage: 690, rated current: 70 A, Connection method: Screw connection, Contact connection type: Pin, Connectors may only be connected/disconnected when under no load.

Phoenix Contact 2024 © - all rights reserved

<https://www.phoenixcontact.com>

Phoenix Contact USA
586 Fulling Mill Road
Middletown, PA 17057, United States
(+717) 944-1300
info@phoenixcon.com