

UM-BASIC/PRO LID-73 KMGY - Lateral element



2202033

<https://www.phoenixcontact.com/us/products/2202033>

Please be informed that the data shown in this PDF document is generated from our online catalog. Please find the complete data in the user documentation. Our general terms of use for downloads are valid.



Press-drawn section housings, Latching, Side element for U-shaped profile cover, width: 10.35 mm, height: 78.49 mm, depth: 68.95 mm

Your advantages

- Different base profiles, each with three PCB levels
- Module covers of different geometries can be positioned in any way
- Compatibility with many standard connection technologies
- Easy device mounting thanks to snap-mount principle (the sides are fixed without the aid of tools)
- High degree of flexibility, thanks to freely positionable covering hoods

Commercial data

Item number	2202033
Packing unit	10 pc
Minimum order quantity	10 pc
Note	Made to order (non-returnable)
Sales key	AC13
Product key	ACHDAC
GTIN	4055626005447
Weight per piece (including packing)	17.26 g
Weight per piece (excluding packing)	17.26 g
Customs tariff number	39269097
Country of origin	PL

Technical data

Notes

Assembly note	Refer to the data sheet for the range in the download area.
---------------	---

Product properties

Product type	Panel mounting base side part
Housing type	Press-drawn section housings
Housing series	UM-BASIC
Type	Side element for U-shaped profile cover
Ventilation openings present	no

Data management status

Article revision	00
------------------	----

Dimensions

Width	10.35 mm
Height	78.49 mm
Depth	68.95 mm

PCB design

PCB thickness	1.4 mm ... 1.8 mm
---------------	-------------------

Material specifications

Color (Housing)	light gray (RAL 7035)
Flammability rating according to UL 94	V0
Housing material	Polyamide
Surface characteristics	untreated

Environmental and real-life conditions

Glow-wire test

Specification	IEC 60695-2-11:2014-02
Temperature	850 °C
Time of exposure	30 s

Thermal stability / ball thrust test

Specification	IEC 60695-10-2:2014-02
Temperature	125 °C
Test duration	1 h
Force	20 N

Mechanical strength / tumbling barrel

Specification	IEC 60068-2-31:2008-05
Height of fall	50 cm
Frequency	50

UM-BASIC/PRO LID-73 KMGY - Lateral element



2202033

<https://www.phoenixcontact.com/us/products/2202033>

Degree of protection (IP code)

Specification	IEC 60529:1989-11 + AMD 1:1999-11 + AMD 2:2013-08
---------------	---

Ambient conditions

Max. IP code to attain	IP20
Ambient temperature (operation)	-40 °C ... 105 °C (depending on power dissipation)
Ambient temperature (storage/transport)	-40 °C ... 55 °C
Ambient temperature (assembly)	-5 °C ... 100 °C
Relative humidity (storage/transport)	80 %

PCB data

Number of PCB holders	4
Type of PCB mount	Slot
Thickness of the PCB	1.4 mm ... 1.8 mm
Note on PCB holders	vertical

Mounting

Mounting type	Latching
---------------	----------

Packaging specifications

Type of packaging	packed in cardboard
Outer packaging type	Carton

UM-BASIC/PRO LID-73 KMGY - Lateral element



2202033

<https://www.phoenixcontact.com/us/products/2202033>

Approvals

🔗 To download certificates, visit the product detail page: <https://www.phoenixcontact.com/us/products/2202033>



UL Recognized

Approval ID: E240868

UM-BASIC/PRO LID-73 KMGY - Lateral element



2202033

<https://www.phoenixcontact.com/us/products/2202033>

Classifications

ECLASS

ECLASS-11.0	27182701
ECLASS-13.0	27190602

ETIM

ETIM 9.0	EC002779
----------	----------

UNSPSC

UNSPSC 21.0	31261500
-------------	----------

Environmental product compliance

EU RoHS	
Fulfills EU RoHS substance requirements	Yes, No exemptions
China RoHS	
Environment friendly use period (EFUP)	EFUP-E
	No hazardous substances above the limits
EU REACH SVHC	
REACH candidate substance (CAS No.)	No substance above 0.1 wt%

UM-BASIC/PRO LID-73 KMGY - Lateral element



2202033

<https://www.phoenixcontact.com/us/products/2202033>

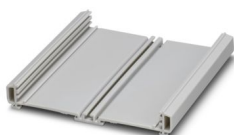
Mandatory accessories

UM-BASIC PROFILE - Profile

2200149

<https://www.phoenixcontact.com/us/products/2200149>

Press-drawn section housings, Latching with side elements, latching with foot element, Basic profile, profile length (configurable): 3 cm ... 200 cm, depth: 19.8 mm, Note: required profile length = PCB length - 16.2 mm



UM-BASIC/PRO 72 COVER-L KMGY - Lateral element

2202018

<https://www.phoenixcontact.com/us/products/2202018>

Lateral element (left) with mounting foot for DIN rails for UM-BASIC profiles with a PCB width of 72 mm



UM-BASIC/PRO LID-73 KMGY - Lateral element

2202033

<https://www.phoenixcontact.com/us/products/2202033>

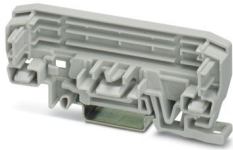


UM-BASIC/PRO 72 COVER-R KMGY - Lateral element

2202019

<https://www.phoenixcontact.com/us/products/2202019>

Lateral element (right) with mounting foot for DIN rails for UM-BASIC profiles with a PCB width of 72 mm



UM-BASIC/PRO 108 COVER-L KMGY - Lateral element

2202021

<https://www.phoenixcontact.com/us/products/2202021>

Lateral element (left) with mounting foot for DIN rails for UM-BASIC profiles with a PCB width of 108 mm



UM-BASIC/PRO LID-73 KMGY - Lateral element

2202033

<https://www.phoenixcontact.com/us/products/2202033>

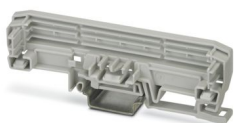


UM-BASIC/PRO 108 COVER-R KMGY - Lateral element

2202022

<https://www.phoenixcontact.com/us/products/2202022>

Lateral element (right) with mounting foot for DIN rails for UM-BASIC profiles with a PCB width of 108 mm



UM-BASIC/PRO 122 COVER-L KMGY - Lateral element

2202045

<https://www.phoenixcontact.com/us/products/2202045>

Lateral element (left) with mounting foot for DIN rails for UM-BASIC profiles with a PCB width of 122 mm



UM-BASIC/PRO LID-73 KMGY - Lateral element

2202033

<https://www.phoenixcontact.com/us/products/2202033>



UM-BASIC/PRO 122 COVER-R KMGY - Lateral element

2202046

<https://www.phoenixcontact.com/us/products/2202046>

Lateral element (right) with mounting foot for DIN rails for UM-BASIC profiles with a PCB width of 122 mm



UM-BASIC/PRO A/U 73 CM - Covering hood

2202036

<https://www.phoenixcontact.com/us/products/2202036>



Press-drawn section housings, Latching, Cover, width: 73 mm, profile length (configurable): 3 cm ... 100 cm, height: 63.2 mm, Note: max. length of the cover = PCB length - 19 mm

Accessories

UM-BASIC/PRO LID-73 KMGY - Lateral element

2202033

<https://www.phoenixcontact.com/us/products/2202033>



SZF 0-0,4X2,5 - Screwdriver

1204504

<https://www.phoenixcontact.com/us/products/1204504>



Actuation tool, for ST terminal blocks, also suitable for use as a bladed screwdriver, size: 0.4 x 2.5 x 75 mm, 2-component grip, with non-slip grip

UM-BASIC/PRO PE CONTACT L1 - Functional ground contact

2202025

<https://www.phoenixcontact.com/us/products/2202025>



PE contact for UM-BASIC panel mounting base for connecting the PCB to the DIN rail at level 1

UM-BASIC/PRO LID-73 KMGY - Lateral element



2202033

<https://www.phoenixcontact.com/us/products/2202033>

UM-BASIC/PRO PE CONTACT L2 - Functional ground contact

2202026

<https://www.phoenixcontact.com/us/products/2202026>



PE contact for UM-BASIC panel mounting base for connecting the PCB to the DIN rail at level 2

UM-BASIC/PRO PE CONTACT L3 - Functional ground contact

2202027

<https://www.phoenixcontact.com/us/products/2202027>



PE contact for UM-BASIC panel mounting base for connecting the PCB to the DIN rail at level 3

UM-BASIC/PRO LID-73 KMGY - Lateral element



2202033

<https://www.phoenixcontact.com/us/products/2202033>

UM-BASIC/PRO PCB S-LOCK KMGY - Locking

2202031

<https://www.phoenixcontact.com/us/products/2202031>



Locking element for locking the upper PCB onto UM-BASIC/PRO housings close to the edge

UM-BASIC/PRO PCB C-LOCK L1KMGY - Locking

2202028

<https://www.phoenixcontact.com/us/products/2202028>



Locking element for locking the PCB onto UM-BASIC/PRO housing at level 1

UM-BASIC/PRO LID-73 KMGY - Lateral element



2202033

<https://www.phoenixcontact.com/us/products/2202033>

UM-BASIC/PRO PCB C-LOCK L2KMGY - Locking

2202029

<https://www.phoenixcontact.com/us/products/2202029>



Locking element for locking the PCB onto UM-BASIC/PRO housing at level 2

UM-BASIC/PRO PCB C-LOCK L3KMGY - Locking

2202030

<https://www.phoenixcontact.com/us/products/2202030>



Locking element for locking the PCB onto UM-BASIC/PRO housing at level 3

UM-BASIC/PRO LID-73 KMGY - Lateral element

2202033

<https://www.phoenixcontact.com/us/products/2202033>



UM-BASIC/PRO MOUNT KMGY - Mounting flange

2202032

<https://www.phoenixcontact.com/us/products/2202032>

Press-drawn section housings, Wall mounting, Mounting flange for direct wall mounting



UM-BASIC/PRO 72 FOOT KMGY - Foot element

2202020

<https://www.phoenixcontact.com/us/products/2202020>

Press-drawn section housings, DIN rail mounting, for the DIN rail, for mounting below UM-BASIC PROFILE (width: 72 mm), Foot element



UM-BASIC/PRO LID-73 KMGY - Lateral element



2202033

<https://www.phoenixcontact.com/us/products/2202033>

UM-BASIC/PRO 108 FOOT KMGY - Foot element

2202023

<https://www.phoenixcontact.com/us/products/2202023>

Press-drawn section housings, DIN rail mounting, for the DIN rail, for mounting below UM-BASIC PROFILE (width: 108 mm), Foot element



UM-BASIC/PRO 122 FOOT KMGY - Foot element

2202024

<https://www.phoenixcontact.com/us/products/2202024>

Press-drawn section housings, DIN rail mounting, for the DIN rail, for mounting below UM-BASIC PROFILE (width: 122 mm), Foot element



Phoenix Contact 2024 © - all rights reserved
<https://www.phoenixcontact.com>

Phoenix Contact USA
586 Fulling Mill Road
Middletown, PA 17057, United States
(+717) 944-1300
info@phoenixcon.com