

# UM 108-PROFIL L17,45CM GN - Profile



2202145

<https://www.phoenixcontact.com/us/products/2202145>

Please be informed that the data shown in this PDF document is generated from our online catalog. Please find the complete data in the user documentation. Our general terms of use for downloads are valid.

Press-drawn section housings, Basic profile, profile width (internal): 122.6 mm, profile width (external): 107.5 mm, length: 174.5 mm, depth: 21.5 mm



## Your advantages

- Easy installation
- Flexible size and shape
- Inexpensive as a result of reducing the number of separate housing parts

## Commercial data

Item number	2202145
Packing unit	10 pc
Minimum order quantity	10 pc
Sales key	AC13
Product key	ACHDBA
GTIN	4055626002163
Weight per piece (including packing)	95.9 g
Weight per piece (excluding packing)	95.9 g
Customs tariff number	39162000
Country of origin	DE

# UM 108-PROFIL L17,45CM GN - Profile



2202145

<https://www.phoenixcontact.com/us/products/2202145>

## Technical data

### Product properties

Product type	Component housing lower part
Housing type	Press-drawn section housings
Housing series	UM
Product family	UM108
Type	Basic profile
Ventilation openings present	no

### Data management status

Article revision	00
------------------	----

### Dimensions

Depth	21.5 mm
Length	174.5 mm

### External dimensions

Profile width (external)	107.5 mm
--------------------------	----------

### Internal dimensions

Profile width (internal)	122.6 mm
--------------------------	----------

### PCB design

PCB thickness	1.4 mm ... 1.8 mm
---------------	-------------------

### Material specifications

Color (Housing)	green (RAL 6021)
Housing material	PVC
Surface characteristics	untreated

### Environmental and real-life conditions

#### Ambient conditions

Max. IP code to attain	IP20
Ambient temperature (operation)	-15 °C ... 50 °C (depending on power dissipation)
Ambient temperature (storage/transport)	-40 °C ... 50 °C
Ambient temperature (assembly)	-5 °C ... 50 °C
Relative humidity (storage/transport)	95 %

### PCB data

Number of PCB holders	2
Thickness of the PCB	1.4 mm ... 1.8 mm

### Packaging specifications

Type of packaging	packed in cardboard
-------------------	---------------------

# UM 108-PROFIL L17,45CM GN - Profile



2202145

<https://www.phoenixcontact.com/us/products/2202145>

Outer packaging type	Carton
----------------------	--------

# UM 108-PROFIL L17,45CM GN - Profile



2202145

<https://www.phoenixcontact.com/us/products/2202145>

## Classifications

### ECLASS

ECLASS-11.0	27182701
ECLASS-13.0	27190601

### ETIM

ETIM 8.0	EC002779
----------	----------

### UNSPSC

UNSPSC 21.0	31261500
-------------	----------

# UM 108-PROFIL L17,45CM GN - Profile



2202145

<https://www.phoenixcontact.com/us/products/2202145>

## Environmental product compliance

### EU RoHS

Fulfills EU RoHS substance requirements	Yes, No exemptions
---	--------------------

### China RoHS

Environment friendly use period (EFUP)	EFUP-E
	No hazardous substances above the limits

### EU REACH SVHC

REACH candidate substance (CAS No.)	No substance above 0.1 wt%
-------------------------------------	----------------------------

# UM 108-PROFIL L17,45CM GN - Profile

2202145

<https://www.phoenixcontact.com/us/products/2202145>



## Accessories

### UM108-FE - Foot element

2959463

<https://www.phoenixcontact.com/us/products/2959463>

Foot element, 107.5 mm wide, for mounting on NS 32 or NS 35/7.5, below profile housing UM 108.



---

### UMK-BF - Mounting flange

2976077

<https://www.phoenixcontact.com/us/products/2976077>

Mounting flange, for mounting directly on the wall



# UM 108-PROFIL L17,45CM GN - Profile



2202145

<https://www.phoenixcontact.com/us/products/2202145>

## UM108-SEPEF/L - Lateral element

2906490

<https://www.phoenixcontact.com/us/products/2906490>

Press-drawn section housings, Lateral element (left), with snap-on foot and PE contact



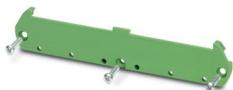
---

## UM108-SE - Lateral element

2959476

<https://www.phoenixcontact.com/us/products/2959476>

Side element, 5 mm wide, PCB width: 107.5 mm



# UM 108-PROFIL L17,45CM GN - Profile



2202145

<https://www.phoenixcontact.com/us/products/2202145>

## UM108-SEFE/R-A60 - Lateral element

2959706

<https://www.phoenixcontact.com/us/products/2959706>



Side element, with foot, tall version, right-hand, for 60 mm wide U-shaped cover.

---

## UM108-SEFE/R-A73 - Lateral element

2959719

<https://www.phoenixcontact.com/us/products/2959719>



Side element, with foot, tall version, right-hand, for 73 mm wide U-shaped cover.



# UM 108-PROFIL L17,45CM GN - Profile



2202145

<https://www.phoenixcontact.com/us/products/2202145>

## UM108 N-SEFE/R-A73 - Lateral element

2709354

<https://www.phoenixcontact.com/us/products/2709354>

Side element, with foot, low-profile version, right-hand, for 73 mm wide U-shaped cover.



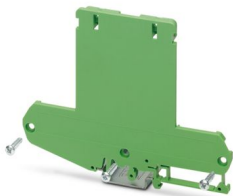
---

## UM108-SEFE/L-A60 - Lateral element

2959722

<https://www.phoenixcontact.com/us/products/2959722>

Side element, with foot, tall version, left-hand, for 60 mm wide U-shaped cover.



# UM 108-PROFIL L17,45CM GN - Profile



2202145

<https://www.phoenixcontact.com/us/products/2202145>

## UM108-SEPEF/L-A60 - Lateral element

2906500

<https://www.phoenixcontact.com/us/products/2906500>



Side element with foot, tall design, left-hand, for 60 mm wide U-shaped cover, with PE contact to the DIN rail.

---

## UM108-SEFE/L-A73 - Lateral element

2959735

<https://www.phoenixcontact.com/us/products/2959735>



Side element, with foot, tall version, left-hand, for 73 mm wide U-shaped cover.

# UM 108-PROFIL L17,45CM GN - Profile



2202145

<https://www.phoenixcontact.com/us/products/2202145>

## UM108-SEPEF/L-A73 - Lateral element

2906513

<https://www.phoenixcontact.com/us/products/2906513>



Side element with foot, tall design, left, for 73 mm wide U-shaped cover, with PE contact to the DIN rail.

---

## UM108 N-SEFE/L-A73 - Lateral element

2709367

<https://www.phoenixcontact.com/us/products/2709367>



Side element, with foot, low-profile version, left-hand, for 73 mm wide U-shaped cover.

# UM 108-PROFIL L17,45CM GN - Profile



2202145

<https://www.phoenixcontact.com/us/products/2202145>

## UM108 N-SEPEF/L-A73 - Lateral element

2709370

<https://www.phoenixcontact.com/us/products/2709370>

Side element with foot, low-profile design, left, for 73 mm wide U-shaped cover, with PE contact to the DIN rail.



---

## UM108-SE-A60 - Lateral element

2959748

<https://www.phoenixcontact.com/us/products/2959748>

Side element, without foot, tall version, for 60 mm wide U-shaped cover.



# UM 108-PROFIL L17,45CM GN - Profile



2202145

<https://www.phoenixcontact.com/us/products/2202145>

## UM108-SE-A73 - Lateral element

2959751

<https://www.phoenixcontact.com/us/products/2959751>

Side element, without foot, tall version, for 73 mm wide U-shaped cover.



---

## UM108 N-SE-A73 - Lateral element

2709383

<https://www.phoenixcontact.com/us/products/2709383>

Side element, without foot, low-profile version, for 73 mm wide U-shaped cover.



# UM 108-PROFIL L17,45CM GN - Profile

2202145

<https://www.phoenixcontact.com/us/products/2202145>



## UM108-A/U CM - Covering hood

2854898

<https://www.phoenixcontact.com/us/products/2854898>



Press-drawn section housings, Latching, Cover, tall design, 73 mm wide, width: 73 mm, Note: length of the cover = length of the press-drawn section used

---

## UM-A/U N 73 CM - Covering hood

2706852

<https://www.phoenixcontact.com/us/products/2706852>



Press-drawn section housings, Latching, Cover, flat design, 73 mm wide, width: 73 mm, Note: length of the cover = length of the press-drawn section used

# UM 108-PROFIL L17,45CM GN - Profile

2202145

<https://www.phoenixcontact.com/us/products/2202145>



## UM108-LG 10 - Lateral element

2959780

<https://www.phoenixcontact.com/us/products/2959780>

Profile housing and board base, 10 mm wide module, consisting of two side elements



---

Phoenix Contact 2024 © - all rights reserved

<https://www.phoenixcontact.com>

Phoenix Contact USA  
586 Fulling Mill Road  
Middletown, PA 17057, United States  
(+717) 944-1300  
[info@phoenixcon.com](mailto:info@phoenixcon.com)