

EG 45-G/ABS GY - Mounting base housing



2764108

<https://www.phoenixcontact.com/us/products/2764108>

Please be informed that the data shown in this PDF document is generated from our online catalog. Please find the complete data in the user documentation. Our general terms of use for downloads are valid.



Lower housing part, with snap-on foot

Your advantages

- Tool-free mounting

Commercial data

Item number	2764108
Packing unit	10 pc
Minimum order quantity	10 pc
Sales key	AC11
Product key	ACHCGA
GTIN	4017918368678
Weight per piece (including packing)	54.22 g
Weight per piece (excluding packing)	54.67 g
Customs tariff number	85389099
Country of origin	PL

EG 45-G/ABS GY - Mounting base housing



2764108

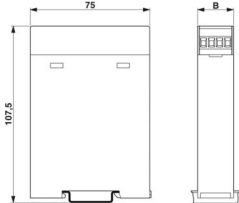
<https://www.phoenixcontact.com/us/products/2764108>

Technical data

Product properties

Product type	Enclosure bottom part
Housing type	Component housing
Housing series	EG
Product family	EG...G
Type	Lower housing part closed, housing cover necessary to complete the module
Number of positions	16
Max. number of positions	0)
Type	Lower housing part, with snap-on foot
Ventilation openings present	no

Dimensions

Dimensional drawing	
Width	45 mm
Height	75 mm

PCB design

PCB thickness	1.4 mm ... 1.8 mm
---------------	-------------------

Material specifications

Color (Housing)	window grey (RAL 7040)
Flammability rating according to UL 94	HB
Housing material	ABS
Surface characteristics	untreated

Environmental and real-life conditions

Ambient conditions

Degree of protection	IP20
Max. IP code to attain	IP20
Ambient temperature (operation)	-40 °C ... 80 °C (depending on power dissipation)
Ambient temperature (storage/transport)	-40 °C ... 55 °C
Ambient temperature (assembly)	-5 °C ... 80 °C

PCB data

Thickness of the PCB	1.4 mm ... 1.8 mm
----------------------	-------------------

EG 45-G/ABS GY - Mounting base housing



2764108

<https://www.phoenixcontact.com/us/products/2764108>

Mounting

Mounting type	DIN rail mounting
---------------	-------------------

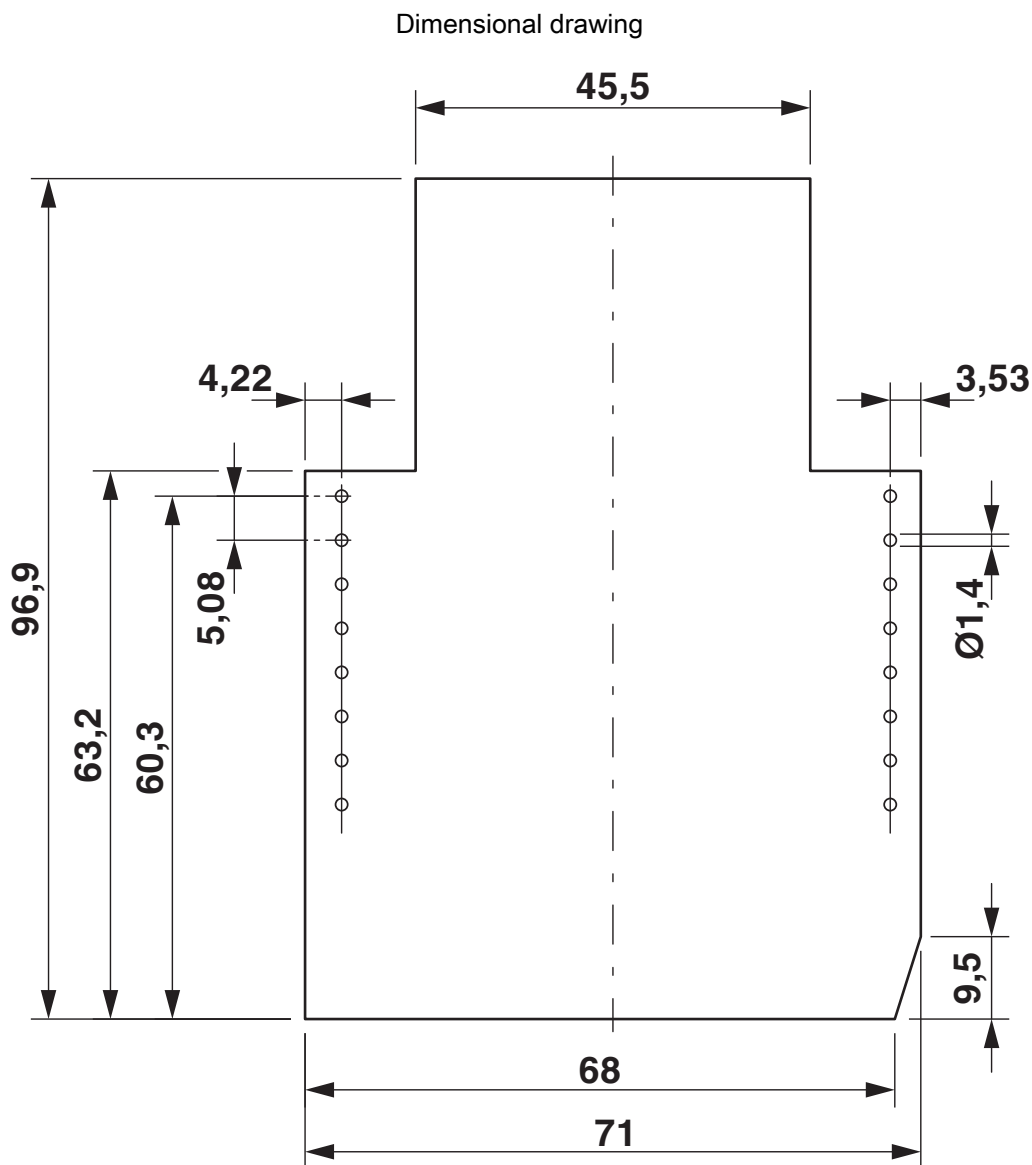
EG 45-G/ABS GY - Mounting base housing

2764108

<https://www.phoenixcontact.com/us/products/2764108>



Drawings

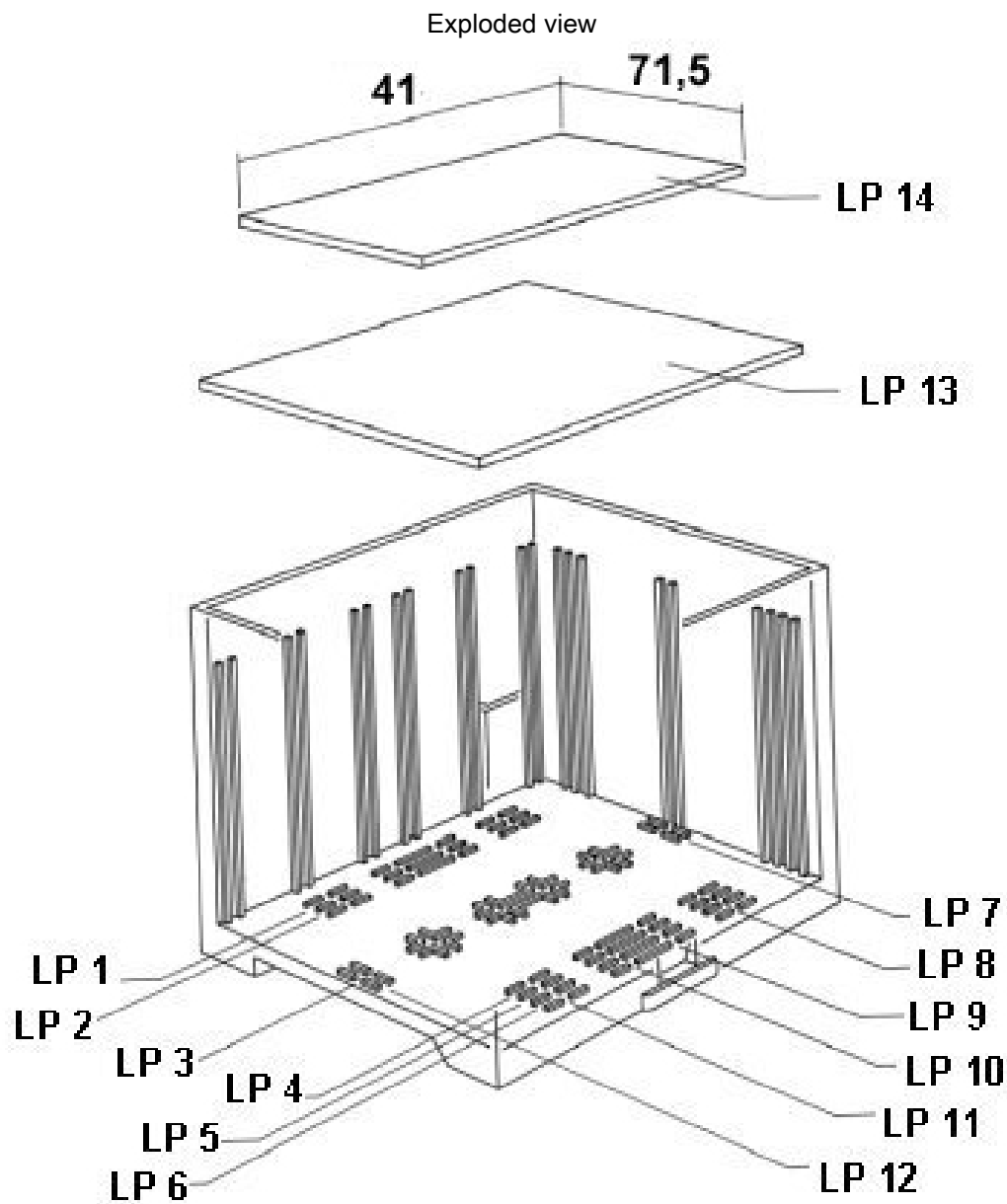


Component mounting side, if the double-level upper part is used

EG 45-G/ABS GY - Mounting base housing

2764108

<https://www.phoenixcontact.com/us/products/2764108>

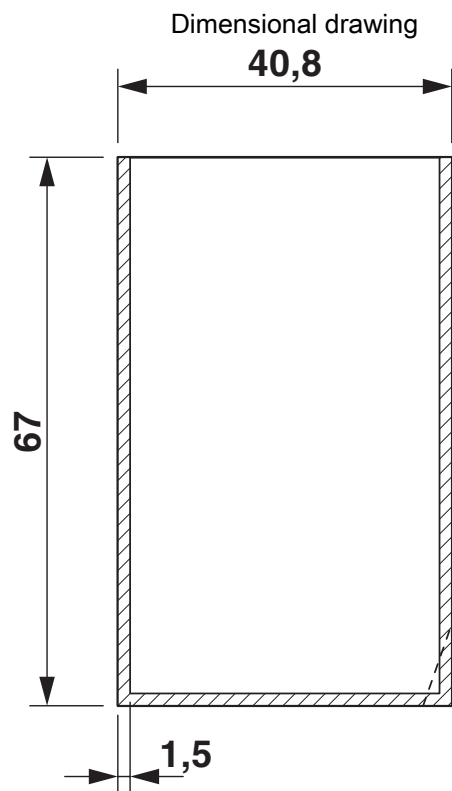


valid for PCB 13

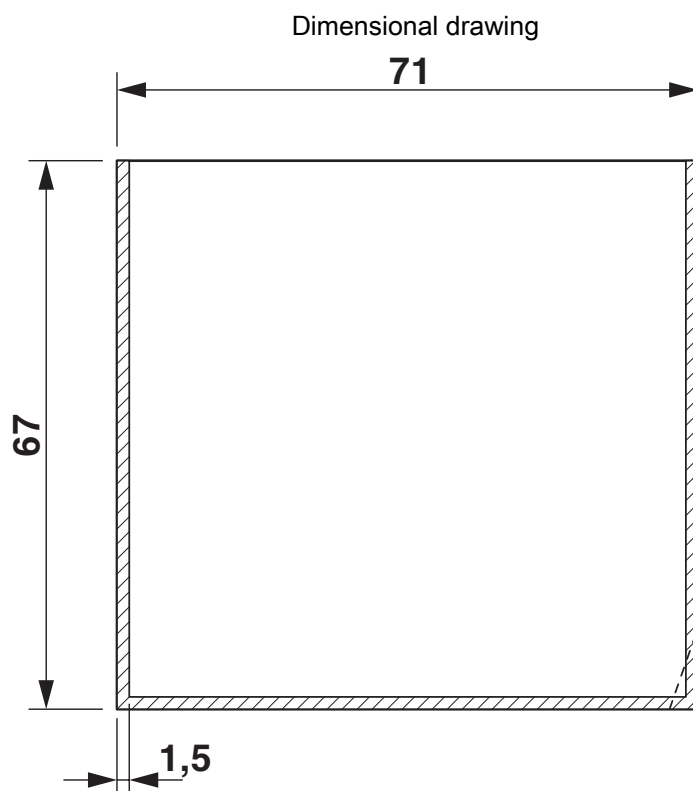
EG 45-G/ABS GY - Mounting base housing

2764108

<https://www.phoenixcontact.com/us/products/2764108>



valid for PCB 1; 3; 5 and 6, see explosion drawing



valid for PCB 7 and 12, see explosion drawing

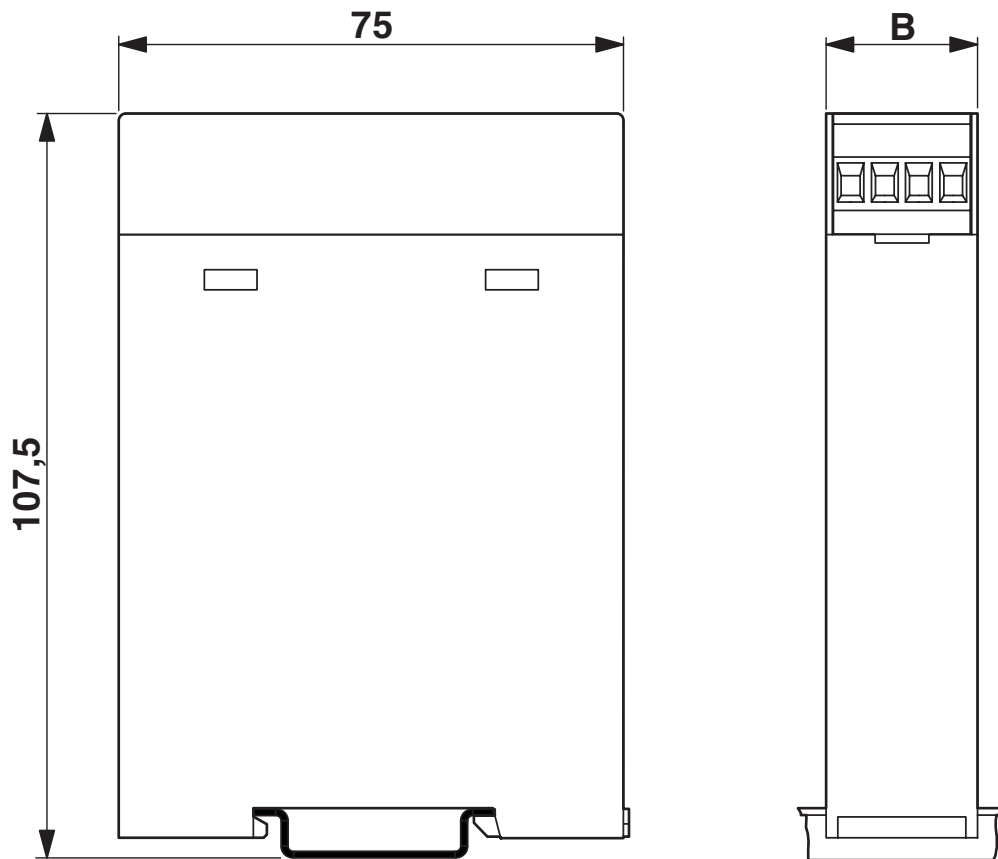
EG 45-G/ABS GY - Mounting base housing

2764108

<https://www.phoenixcontact.com/us/products/2764108>



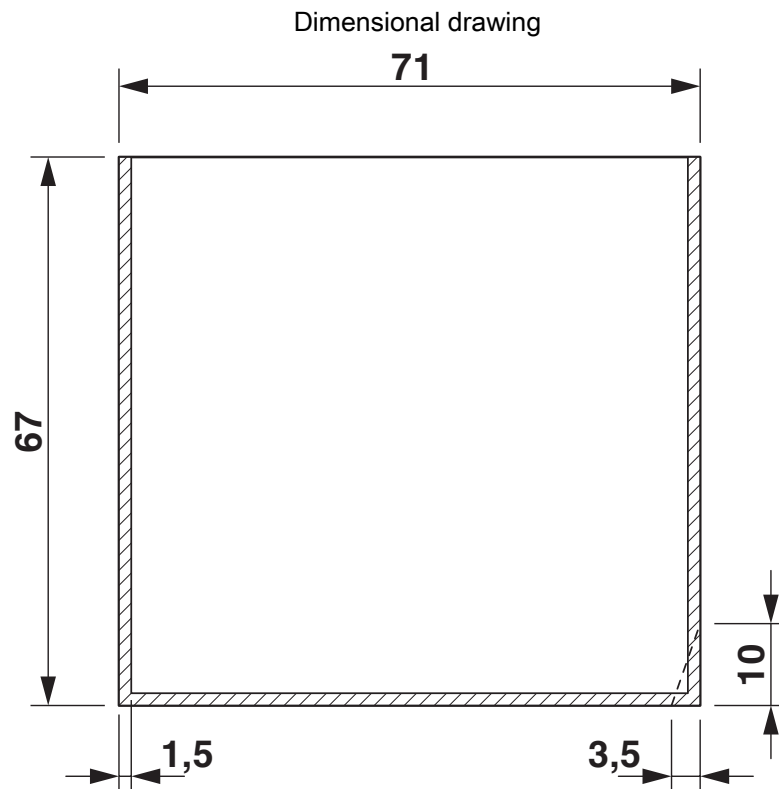
Dimensional drawing



EG 45-G/ABS GY - Mounting base housing

2764108

<https://www.phoenixcontact.com/us/products/2764108>

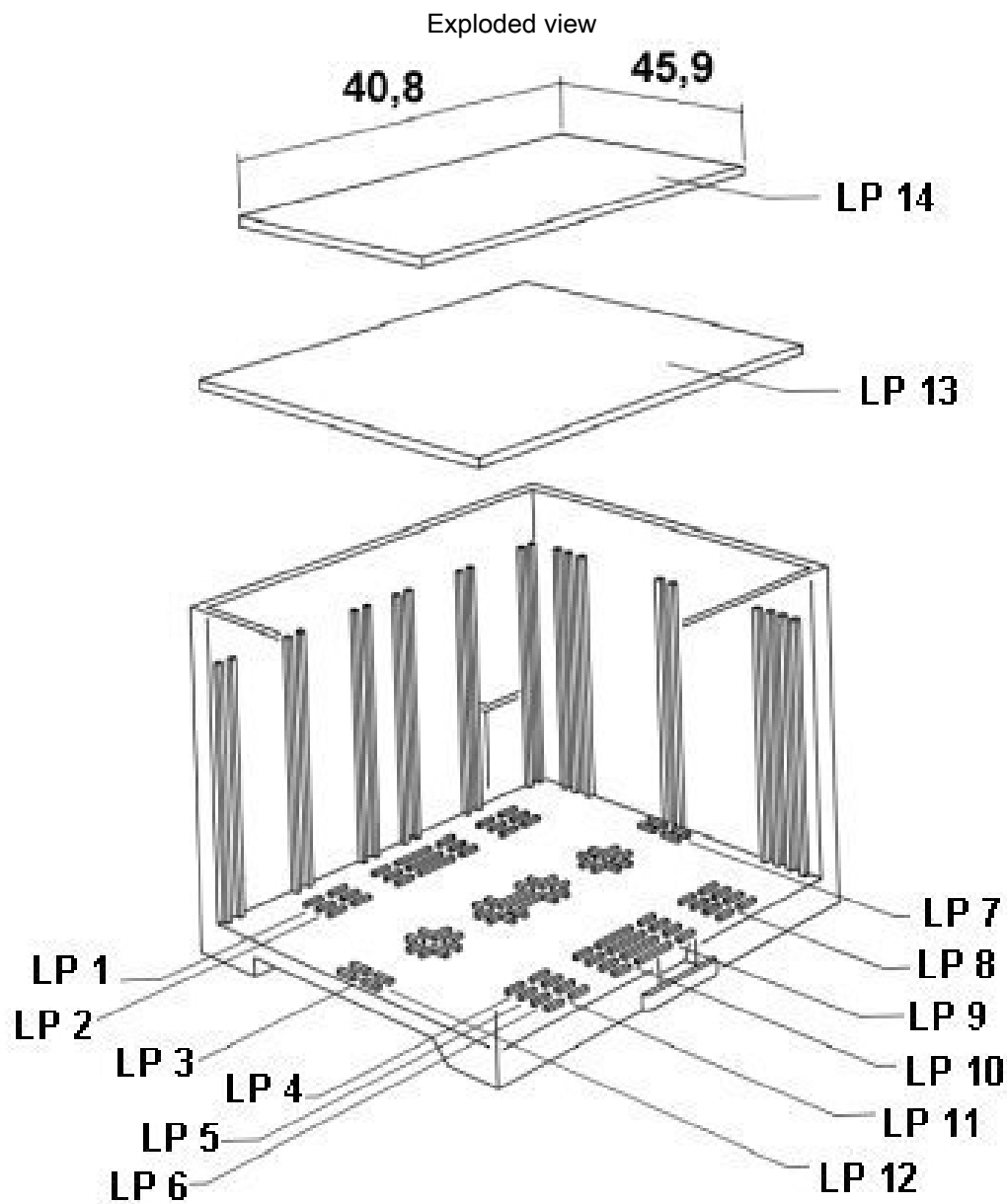


valid for PCB 10, see explosion drawing

EG 45-G/ABS GY - Mounting base housing

2764108

<https://www.phoenixcontact.com/us/products/2764108>



valid for PCB 14

EG 45-G/ABS GY - Mounting base housing



2764108

<https://www.phoenixcontact.com/us/products/2764108>

Approvals

🔗 To download certificates, visit the product detail page: <https://www.phoenixcontact.com/us/products/2764108>



UL Recognized

Approval ID: E240868

EG 45-G/ABS GY - Mounting base housing



2764108

<https://www.phoenixcontact.com/us/products/2764108>

Classifications

ECLASS

ECLASS-11.0	27182702
ECLASS-13.0	27190601

ETIM

ETIM 8.0	EC001031
----------	----------

UNSPSC

UNSPSC 21.0	31261500
-------------	----------

EG 45-G/ABS GY - Mounting base housing



2764108

<https://www.phoenixcontact.com/us/products/2764108>

Environmental product compliance

EU RoHS	
Fulfills EU RoHS substance requirements	Yes, No exemptions
China RoHS	
Environment friendly use period (EFUP)	EFUP-E
	No hazardous substances above the limits
EU REACH SVHC	
REACH candidate substance (CAS No.)	No substance above 0.1 wt%

EG 45-G/ABS GY - Mounting base housing



2764108

<https://www.phoenixcontact.com/us/products/2764108>

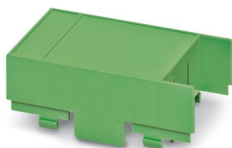
Mandatory accessories

EG 45-AE/ABS GN - Upper housing part

2764409

<https://www.phoenixcontact.com/us/products/2764409>

Component housing, Cover, for one-sided connection, width: 45 mm, height: 75 mm, color: green (similar RAL 6021)

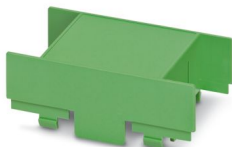


EG 45-A/ABS GN - Upper housing part

2764179

<https://www.phoenixcontact.com/us/products/2764179>

Component housing, Cover, for two-sided connection, width: 45 mm, height: 75 mm, color: green (similar RAL 6021)



EG 45-G/ABS GY - Mounting base housing

2764108

<https://www.phoenixcontact.com/us/products/2764108>



EG 45-A/ABS GY - Upper housing part

2764250

<https://www.phoenixcontact.com/us/products/2764250>

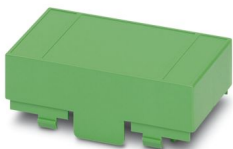


Component housing, Cover, for two-sided connection, width: 45 mm, height: 75 mm, color: window grey (similar RAL 7040)

EG 45-AG/ABS GN - Upper housing part

2907363

<https://www.phoenixcontact.com/us/products/2907363>



Component housing, Cover, closed, width: 45 mm, height: 75 mm, color: green (similar RAL 6021)

Accessories

EG 45-G/ABS GY - Mounting base housing



2764108

<https://www.phoenixcontact.com/us/products/2764108>

CR-MSTB - Coding section

1734401

<https://www.phoenixcontact.com/us/products/1734401>

Coding section, inserted into the recess in the header or the inverted plug, red insulating material



CP-MSTB - Coding profile

1734634

<https://www.phoenixcontact.com/us/products/1734634>

Coding profile, is inserted into the slot on the plug or inverted header, red insulating material



EG 45-G/ABS GY - Mounting base housing



2764108

<https://www.phoenixcontact.com/us/products/2764108>

MSTBO 2,5/ 8-GL-5,08 - PCB header

1850495

<https://www.phoenixcontact.com/us/products/1850495>

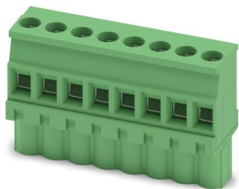


PCB headers, nominal cross section: 2.5 mm², color: green, nominal current: 8 A, rated voltage (III/2): 320 V, contact surface: Sn, contact connection type: Pin, number of potentials: 8, number of rows: 1, number of positions: 8, number of connections: 8, product range: MSTBO 2,5/...-GL, pitch: 5.08 mm, mounting: Wave soldering, pin layout: Linear pinning, solder pin [P]: 3.2 mm, number of solder pins per potential: 1, plug-in system: COMBICON MSTB 2,5, locking: without, mounting: without, type of packaging: packed in cardboard

MVSTBW 2,5/ 8-ST - PCB connector

1792582

<https://www.phoenixcontact.com/us/products/1792582>



PCB connector, nominal cross section: 2.5 mm², color: green, nominal current: 12 A, rated voltage (III/2): 320 V, contact surface: Sn, contact connection type: Socket, number of potentials: 8, number of rows: 1, number of positions: 8, number of connections: 8, product range: MVSTBW 2,5/...-ST, pitch: 5 mm, connection method: Screw connection with tension sleeve, screw head form: L Slotted, conductor/PCB connection direction: -90 °, locking clip: - Locking clip, plug-in system: COMBICON MSTB 2,5, locking: without, mounting: without, type of packaging: packed in cardboard

EG 45-G/ABS GY - Mounting base housing



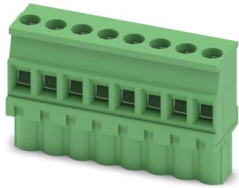
2764108

<https://www.phoenixcontact.com/us/products/2764108>

MVSTBW 2,5/ 8-ST-5,08 - PCB connector

1792812

<https://www.phoenixcontact.com/us/products/1792812>



PCB connector, nominal cross section: 2.5 mm², color: green, nominal current: 12 A, rated voltage (III/2): 320 V, contact surface: Sn, contact connection type: Socket, number of potentials: 8, number of rows: 1, number of positions: 8, number of connections: 8, product range: MVSTBW 2,5/...-ST, pitch: 5.08 mm, connection method: Screw connection with tension sleeve, screw head form: L Slotted, conductor/PCB connection direction: -90 °, locking clip: - Locking clip, plug-in system: COMBICON MSTB 2,5, locking: without, mounting: without, type of packaging: packed in cardboard

MVSTBW 2,5/ 8-STEHL - PCB connector

1784309

<https://www.phoenixcontact.com/us/products/1784309>



PCB connector, nominal cross section: 2.5 mm², color: green, nominal current: 12 A, rated voltage (III/2): 320 V, contact surface: Sn, contact connection type: Socket, number of potentials: 8, number of rows: 1, number of positions: 8, number of connections: 8, product range: MVSTBW 2,5/...-STEHL, pitch: 5 mm, connection method: Screw connection with tension sleeve, screw head form: L Slotted, conductor/PCB connection direction: -90 °, locking clip: - Locking clip, plug-in system: COMBICON MSTB 2,5, locking: without, mounting: without, type of packaging: packed in cardboard

EG 45-G/ABS GY - Mounting base housing



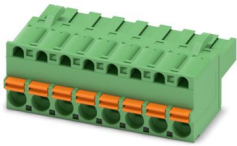
2764108

<https://www.phoenixcontact.com/us/products/2764108>

FKCT 2,5/ 8-ST - PCB connector

1909278

<https://www.phoenixcontact.com/us/products/1909278>

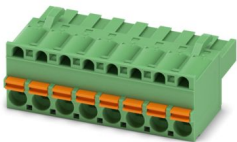


PCB connector, nominal cross section: 2.5 mm², color: green, nominal current: 12 A, rated voltage (III/2): 320 V, contact surface: Sn, contact connection type: Socket, number of potentials: 8, number of rows: 1, number of positions: 8, number of connections: 8, product range: FKCT 2,5/...-ST, pitch: 5 mm, connection method: Push-in spring connection, conductor/PCB connection direction: 0 °, locking clip: - Locking clip, plug-in system: COMBICON MSTB 2,5, locking: without, mounting: without, type of packaging: packed in cardboard

FKCT 2,5/ 8-ST-5,08 - PCB connector

1902178

<https://www.phoenixcontact.com/us/products/1902178>



PCB connector, nominal cross section: 2.5 mm², color: green, nominal current: 12 A, rated voltage (III/2): 320 V, contact surface: Sn, contact connection type: Socket, number of potentials: 8, number of rows: 1, number of positions: 8, number of connections: 8, product range: FKCT 2,5/...-ST, pitch: 5.08 mm, connection method: Push-in spring connection, conductor/PCB connection direction: 0 °, locking clip: - Locking clip, plug-in system: COMBICON MSTB 2,5, locking: without, mounting: without, type of packaging: packed in cardboard

EG 45-G/ABS GY - Mounting base housing



2764108

<https://www.phoenixcontact.com/us/products/2764108>

MKKDSH 3/ 2 - PCB terminal block

1721045

<https://www.phoenixcontact.com/us/products/1721045>



PCB terminal block, nominal current: 24 A, rated voltage (III/2): 400 V, nominal cross section: 2.5 mm², number of potentials: 2, number of rows: 1, number of positions per row: 2, product range: MKKDSH 3, pitch: 5 mm, connection method: Screw connection with tension sleeve, screw head form: L Slotted, mounting: Wave soldering, conductor/PCB connection direction: 0 °, color: green, Pin layout: Linear pinning, Solder pin [P]: 5 mm, number of solder pins per potential: 1, type of packaging: packed in cardboard. The article can be aligned to create different nos. of positions!

MKKDSH 3/ 3 - PCB terminal block

1721346

<https://www.phoenixcontact.com/us/products/1721346>



PCB terminal block, nominal current: 24 A, rated voltage (III/2): 400 V, nominal cross section: 2.5 mm², number of potentials: 3, number of rows: 1, number of positions per row: 3, product range: MKKDSH 3, pitch: 5 mm, connection method: Screw connection with tension sleeve, screw head form: L Slotted, mounting: Wave soldering, conductor/PCB connection direction: 0 °, color: green, Pin layout: Linear pinning, Solder pin [P]: 5 mm, number of solder pins per potential: 1, type of packaging: packed in cardboard. The article can be aligned to create different nos. of positions!

EG 45-G/ABS GY - Mounting base housing



2764108

<https://www.phoenixcontact.com/us/products/2764108>

MKKDSH 3/ 8 - PCB terminal block

1703283

<https://www.phoenixcontact.com/us/products/1703283>



PCB terminal block, nominal current: 24 A, rated voltage (III/2): 400 V, nominal cross section: 2.5 mm², number of potentials: 8, number of rows: 1, number of positions per row: 8, product range: MKKDSH 3, pitch: 5 mm, connection method: Screw connection with tension sleeve, screw head form: L Slotted, mounting: Wave soldering, conductor/PCB connection direction: 0 °, color: green, Pin layout: Linear pinning, Solder pin [P]: 5 mm, number of solder pins per potential: 1, type of packaging: packed in cardboard. The article can be aligned to create different nos. of positions!

MKKDSH 3/ 2 GY - PCB terminal block

1932478

<https://www.phoenixcontact.com/us/products/1932478>



PCB terminal block, nominal current: 24 A, rated voltage (III/2): 400 V, nominal cross section: 2.5 mm², number of rows: 1, number of positions per row: 2, product range: MKKDSH 3, pitch: 5 mm, connection method: Screw connection with tension sleeve, screw head form: L Slotted, mounting: Wave soldering, conductor/PCB connection direction: 0 °, color: gray, Pin layout: Linear pinning, Solder pin [P]: 5 mm, number of solder pins per potential: 1, type of packaging: packed in cardboard. The article can be aligned to create different nos. of positions!

EG 45-G/ABS GY - Mounting base housing



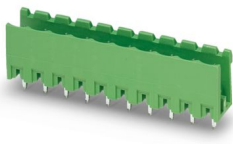
2764108

<https://www.phoenixcontact.com/us/products/2764108>

MSTBV 2,5/ 8-G GY - PCB header

1826160

<https://www.phoenixcontact.com/us/products/1826160>



PCB headers, nominal cross section: 2.5 mm², color: gray, nominal current: 12 A, rated voltage (III/2): 320 V, contact surface: Sn, contact connection type: Pin, number of potentials: 8, number of rows: 1, number of positions: 8, number of connections: 8, product range: MSTBV 2,5/...-G, pitch: 5 mm, mounting: Wave soldering, pin layout: Linear pinning, solder pin [P]: 3.9 mm, number of solder pins per potential: 1, plug-in system: COMBICON MSTB 2,5, Pin connector pattern alignment: Standard, locking: without, mounting: without, type of packaging: packed in cardboard

MSTBO 2,5/ 8-GR-5,08 GY - PCB header

1926785

<https://www.phoenixcontact.com/us/products/1926785>



PCB headers, nominal cross section: 2.5 mm², color: gray, nominal current: 8 A, rated voltage (III/2): 320 V, contact surface: Sn, contact connection type: Pin, number of potentials: 8, number of rows: 1, number of positions: 8, number of connections: 8, product range: MSTBO 2,5/...-GR, pitch: 5.08 mm, mounting: Wave soldering, pin layout: Linear pinning, solder pin [P]: 3.2 mm, number of solder pins per potential: 1, plug-in system: COMBICON MSTB 2,5, locking: without, mounting: without, type of packaging: packed in cardboard

EG 45-G/ABS GY - Mounting base housing



2764108

<https://www.phoenixcontact.com/us/products/2764108>

MSTBO 2,5/ 8-GL-5,08 GY - PCB header

1926772

<https://www.phoenixcontact.com/us/products/1926772>



PCB headers, nominal cross section: 2.5 mm², color: gray, nominal current: 8 A, rated voltage (III/2): 320 V, contact surface: Sn, contact connection type: Pin, number of potentials: 8, number of rows: 1, number of positions: 8, number of connections: 8, product range: MSTBO 2,5/...-GL, pitch: 5.08 mm, mounting: Wave soldering, pin layout: Linear pinning, solder pin [P]: 3.2 mm, number of solder pins per potential: 1, plug-in system: COMBICON MSTB 2,5, locking: without, mounting: without, type of packaging: packed in cardboard

MVSTBW 2,5/ 8-ST GY - PCB connector

1825996

<https://www.phoenixcontact.com/us/products/1825996>



PCB connector, nominal cross section: 2.5 mm², color: gray, nominal current: 12 A, rated voltage (III/2): 320 V, contact surface: Sn, contact connection type: Socket, number of potentials: 8, number of rows: 1, number of positions: 8, number of connections: 8, product range: MVSTBW 2,5/...-ST, pitch: 5 mm, connection method: Screw connection with tension sleeve, screw head form: L Slotted, conductor/PCB connection direction: -90 °, locking clip: - Locking clip, plug-in system: COMBICON MSTB 2,5, locking: without, mounting: without, type of packaging: packed in cardboard

EG 45-G/ABS GY - Mounting base housing



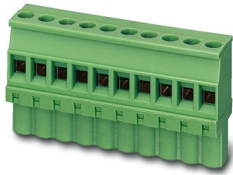
2764108

<https://www.phoenixcontact.com/us/products/2764108>

MVSTBW 2,5/ 8-ST-5,08 GY - PCB connector

1829293

<https://www.phoenixcontact.com/us/products/1829293>



PCB connector, nominal cross section: 2.5 mm², color: gray, nominal current: 12 A, rated voltage (III/2): 320 V, contact surface: Sn, contact connection type: Socket, number of potentials: 8, number of rows: 1, number of positions: 8, number of connections: 8, product range: MVSTBW 2,5/...-ST, pitch: 5.08 mm, connection method: Screw connection with tension sleeve, screw head form: L Slotted, conductor/PCB connection direction: -90 °, locking clip: - Locking clip, plug-in system: COMBICON MSTB 2,5, locking: without, mounting: without, type of packaging: packed in cardboard

MVSTBW 2,5/ 8-STE H GY - PCB connector

1863628

<https://www.phoenixcontact.com/us/products/1863628>



PCB connector, nominal cross section: 2.5 mm², color: gray, nominal current: 12 A, rated voltage (III/2): 320 V, contact surface: Sn, contact connection type: Socket, number of potentials: 8, number of rows: 1, number of positions: 8, number of connections: 8, product range: MVSTBW 2,5/...-STE H, pitch: 5 mm, connection method: Screw connection with tension sleeve, screw head form: L Slotted, conductor/PCB connection direction: -90 °, locking clip: - Locking clip, plug-in system: COMBICON MSTB 2,5, locking: without, mounting: without, type of packaging: packed in cardboard

Phoenix Contact 2024 © - all rights reserved
<https://www.phoenixcontact.com>

Phoenix Contact USA
586 Fulling Mill Road
Middletown, PA 17057, United States
(+717) 944-1300
info@phoenixcon.com