

# UEGM 25 - Electronics housing



2792015

<https://www.phoenixcontact.com/us/products/2792015>

Please be informed that the data shown in this PDF document is generated from our online catalog. Please find the complete data in the user documentation. Our general terms of use for downloads are valid.



Electronic housing, for PCB insertion, fully equipped with 3 screw or 6 tab connections per side

## Commercial data

Item number	2792015
Packing unit	10 pc
Minimum order quantity	1 pc
Sales key	AC11
Product key	ACHCCB
Catalog page	Page 724 (C-1-2013)
GTIN	4017918072520
Weight per piece (including packing)	57.2 g
Weight per piece (excluding packing)	57.2 g
Customs tariff number	85369010
Country of origin	DE

Technical data

Product properties

Product type	Complete housing
Housing type	Component housing
Housing series	UEGM
Product family	UEGM
Type	Connection system integrated, housing closed
Number of positions	6
Pitch	5 mm
Number of rows	1
Type	Complete housing equipped with 3 screw connections per side
Pin layout	Linear pinning

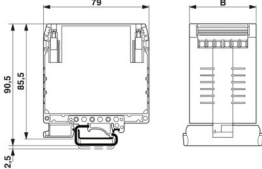
Electrical properties

Nominal voltage $U_N$	500 V (Voltage and current values are affected by the configuration of the printed circuit board.)
Nominal current $I_N$	10 A

Connection data

Connection method	Screw connection
-------------------	------------------

Dimensions

Dimensional drawing	
Width	25 mm
Installed height	85.5 mm
Height NS 35/7,5	85.5 mm
Depth	79 mm
Length	79 mm
Pitch	5 mm

Material specifications

Color (Housing)	green (RAL 6021)
Flammability rating according to UL 94	V2
Housing material	Polyamide
Surface characteristics	untreated

Environmental and real-life conditions

# UEGM 25 - Electronics housing



2792015

<https://www.phoenixcontact.com/us/products/2792015>

Ambient conditions

Ambient temperature (operation)	-40 °C ... 105 °C
---------------------------------	-------------------

Mounting

Mounting type	DIN rail mounting
Pin layout	Linear pinning

# UEGM 25 - Electronics housing

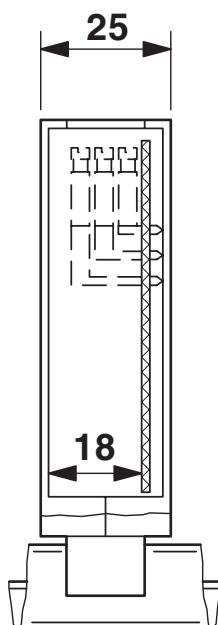
2792015

<https://www.phoenixcontact.com/us/products/2792015>



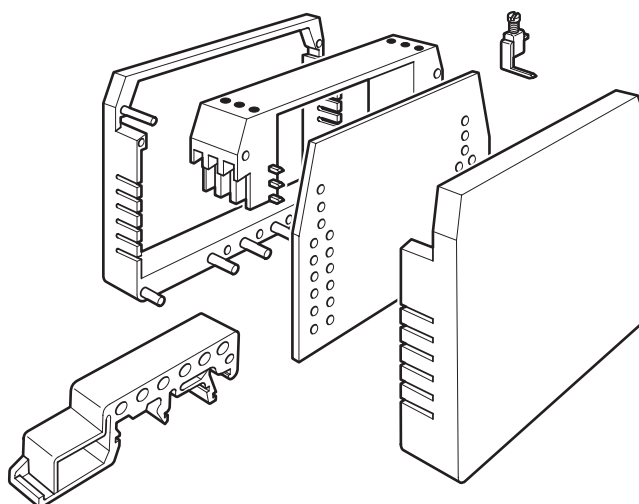
## Drawings

Dimensional drawing

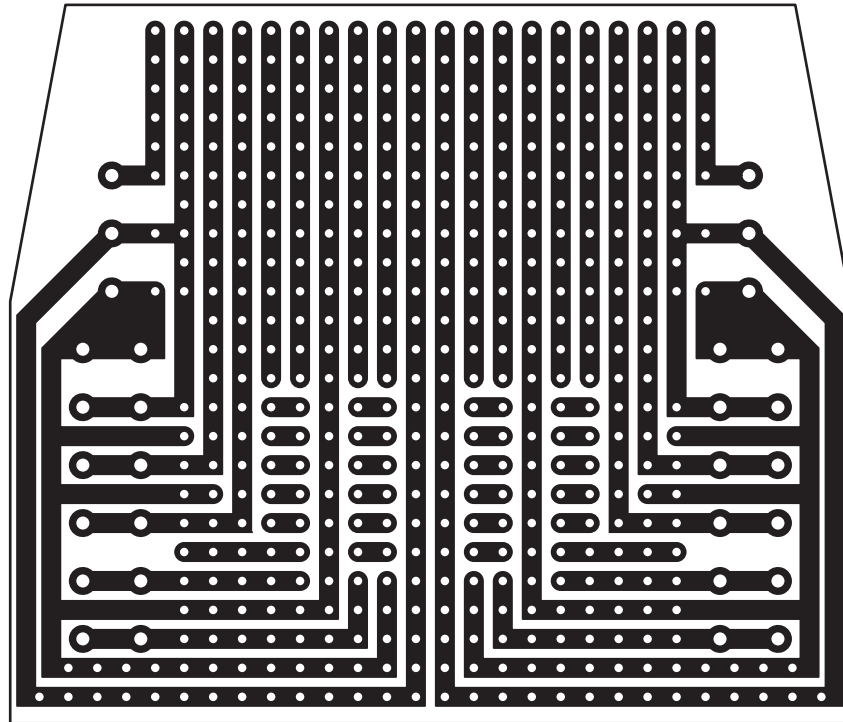


UEGM 25... und UEGM 27,5-SMD with 1 PCB, 6 positions or 12 positions (FS/FS)

Exploded view



Schematic diagram



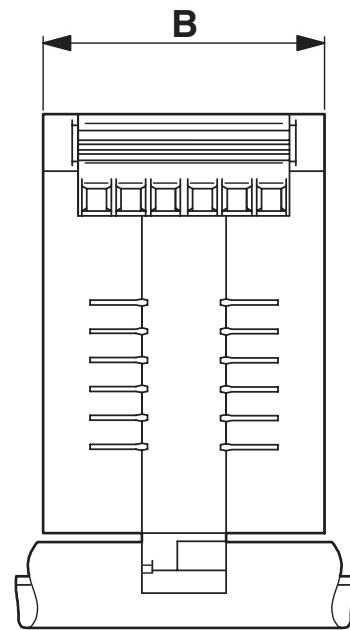
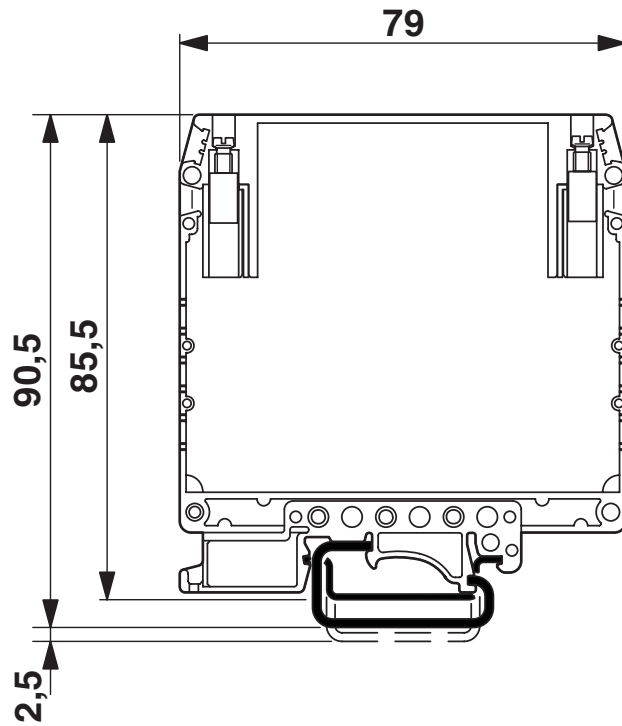
# UEGM 25 - Electronics housing

2792015

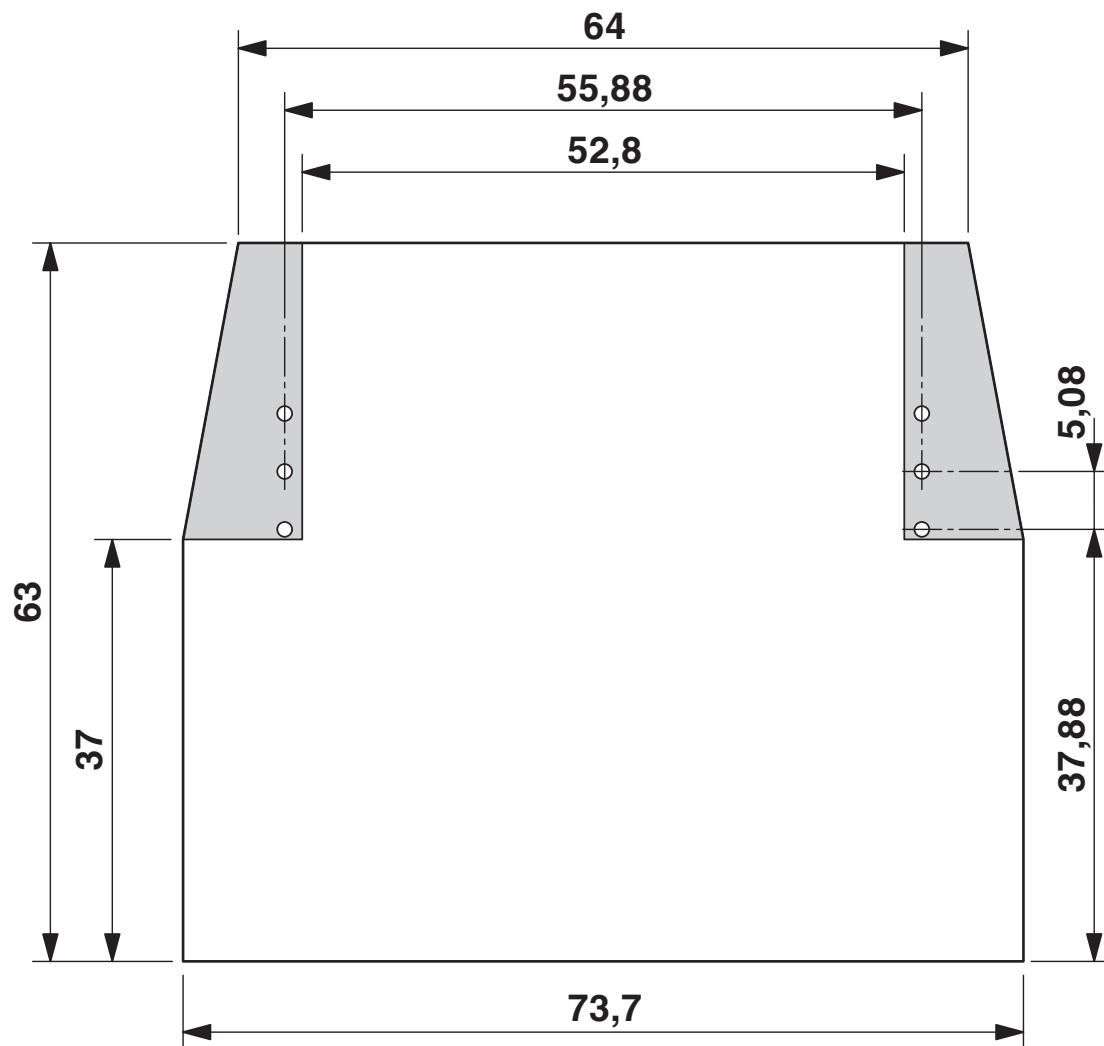
<https://www.phoenixcontact.com/us/products/2792015>



Dimensional drawing



Dimensional drawing



# UEGM 25 - Electronics housing




2792015

<https://www.phoenixcontact.com/us/products/2792015>

## Approvals

To download certificates, visit the product detail page: <https://www.phoenixcontact.com/us/products/2792015>

<div> <b>cULus Recognized</b> Approval ID: E60425-19770427</div>				
	Nominal voltage $U_N$	Nominal current $I_N$	Cross section AWG	Cross section $\text{mm}^2$
Use group B				
	300 V	10 A	30 - 12	-
Use group D				
	300 V	10 A	30 - 12	-



# UEGM 25 - Electronics housing



2792015

<https://www.phoenixcontact.com/us/products/2792015>

## Classifications

### ECLASS

ECLASS-11.0	27182702
ECLASS-13.0	27190501

### ETIM

ETIM 9.0	EC001031
----------	----------

### UNSPSC

UNSPSC 21.0	31261500
-------------	----------

Environmental product compliance

EU RoHS	
Fulfills EU RoHS substance requirements	Yes, No exemptions
China RoHS	
Environment friendly use period (EFUP)	EFUP-E
	No hazardous substances above the limits
EU REACH SVHC	
REACH candidate substance (CAS No.)	No substance above 0.1 wt%

# UEGM 25 - Electronics housing



2792015

<https://www.phoenixcontact.com/us/products/2792015>

## Accessories

### DB 50- 90 GY - Wire bridge

2820929

<https://www.phoenixcontact.com/us/products/2820929>

Flexible wire loop bridge, 50-pos., conductor cross-section: 0.5 mm<sup>2</sup>, loop length: 90 mm, ferrule length: 8 mm, color: gray



---

Phoenix Contact 2024 © - all rights reserved  
<https://www.phoenixcontact.com>

Phoenix Contact USA  
586 Fulling Mill Road  
Middletown, PA 17057, United States  
(+717) 944-1300  
[info@phoenixcon.com](mailto:info@phoenixcon.com)