

FL SWITCH SFN 8TX-PN - Industrial Ethernet Switch



2891018

<https://www.phoenixcontact.com/us/products/2891018>

Please be informed that the data shown in this PDF document is generated from our online catalog. Please find the complete data in the user documentation. Our general terms of use for downloads are valid.



Ethernet switch, eight TP RJ45 ports, automatic detection of data transmission speed of 10 or 100 Mbps (RJ45), autocrossing function. The multicast filter will block PROFINET PTCP-Delay traffic.

Product description

FL SWITCH SFN... Factoryline switches with standard functions can be used for quick and cost-effective Ethernet network expansion to the field level. The narrow housing design makes them suitable for universal remote use in control cabinets and junction boxes.

FL SWITCH SFN...-PN switches have a unique multicast filter that blocks PROFINET PTCP-Delay traffic.

Switching properties

- Multi-address function

The switch independently learns the addresses of termination devices connected to a port by evaluating the source addresses in the data. Only packets with unknown addresses, with a source address of this port or with a multicast/broadcast address in the destination address field are forwarded via the corresponding port. Up to 2048 MAC addresses can be stored.

- Quality of service

In cases of heavy traffic, packets with an 802.1Q priority level between 4 and 7 or with an IPv4 Type of Service Precedence value of one or more are considered high priority and are processed before packets with an 802.1Q priority level between 0 and 3 or an IPv4 Type of Service Precedence value of 0.

- Multicast filtering

The multicast filter will block PROFINET PTCP-Delay traffic by filtering frames with the destination MAC address in the range 01-80-C2-00-00-02 through 01-80-C2-00-00-0F. Note that the filter blocks LLDP traffic because PTCP-Delay uses the same MAC address (01-80-C2-00-00-0E).

- Security

Low cost, low complexity security (optional) elements are available to restrict access or tampering.

- Wiring

Power connection is via a removable COMBICON connector. US is +24 V DC and GND is 0 V DC. FE is via a separate screw.

Your advantages

- QoS-prioritized (Quality of Service) messages
- Multicast filter to block PROFINET PTCP-Delay traffic
- RJ45 ports support a transmission speed of 10/100 Mbps
- Local diagnostic indicators with LEDs
- The switch also offers cable locking and port blocking
- Auto negotiation and autocrossing detection simplifies installation and setup

Commercial data

Item number	2891018
Packing unit	1 pc
Minimum order quantity	1 pc
Sales key	DN19
Product key	DNN113

FL SWITCH SFN 8TX-PN - Industrial Ethernet Switch



2891018

<https://www.phoenixcontact.com/us/products/2891018>

Catalog page	Page 290 (C-6-2019)
GTIN	4046356997300
Weight per piece (including packing)	615 g
Weight per piece (excluding packing)	365 g
Customs tariff number	85176200
Country of origin	TW

FL SWITCH SFN 8TX-PN - Industrial Ethernet Switch



2891018

<https://www.phoenixcontact.com/us/products/2891018>

Technical data

Dimensions

Width	50 mm
Height	130 mm
Depth	100 mm

Notes

Note on application

Note on application	Only for industrial use
---------------------	-------------------------

Material specifications

Housing material	Aluminum
------------------	----------

Mounting

Mounting type	DIN rail mounting
---------------	-------------------

Interfaces

Ethernet (RJ45)

Connection method	RJ45
Note on the connection method	Auto negotiation and autocrossing
Transmission speed	10/100 Mbps
Transmission physics	Ethernet in RJ45 twisted pair
No. of channels	8 (RJ45 ports)

Product properties

Product type	Switch
Product family	Unmanaged Switch SFN
Type	Block design
MTTF	128 Years (MIL-HDBK-217F standard, temperature 25°C, operating cycle 100%)

Data management status

Article revision	02
------------------	----

Switch functions

Basic functions	Unmanaged switch / auto negotiation, complies with IEEE 802.3, store and forward switching mode
PROFINET conformance class	Conformance-Class A
Status and diagnostic indicators	LEDs: U _S , link and activity per port
Additional functions	Autonegotiation

Security functions

Basic functions	Unmanaged switch / auto negotiation, complies with IEEE 802.3, store and forward switching mode
-----------------	---

FL SWITCH SFN 8TX-PN - Industrial Ethernet Switch



2891018

<https://www.phoenixcontact.com/us/products/2891018>

Electrical properties

Maximum power dissipation for nominal condition	3.36 W
Transmission medium	Copper

Supply

Supply voltage (DC)	24 V DC
Supply voltage range	9 V DC ... 32 V DC
Residual ripple	3.6 V _{PP} (within the permitted voltage range)
Typical current consumption	140 mA (at U _S = 24 V DC)

Environmental and real-life conditions

Ambient conditions

Degree of protection	IP20
Ambient temperature (operation)	0 °C ... 60 °C
Ambient temperature (storage/transport)	-20 °C ... 70 °C
Permissible humidity (operation)	5 % ... 95 % (non-condensing)
Permissible humidity (storage/transport)	5 % ... 95 % (non-condensing)
Air pressure (operation)	86 kPa ... 108 kPa (up to 1500 m above sea level)
Air pressure (storage/transport)	66 kPa ... 108 kPa (up to 3500 m above sea level)

EMC data

Conformance with EMC directives	IEC 61000-6-2 IEC 61000-4-2 (ESD) Criterion B
Noise immunity	EN 61000-6-2:2005
Noise emission	EN 61000-6-4

System properties

Functionality

Basic functions	Unmanaged switch / auto negotiation, complies with IEEE 802.3, store and forward switching mode
-----------------	---

Signaling

Status display	LEDs: U _S , link and activity per port
----------------	---

FL SWITCH SFN 8TX-PN - Industrial Ethernet Switch

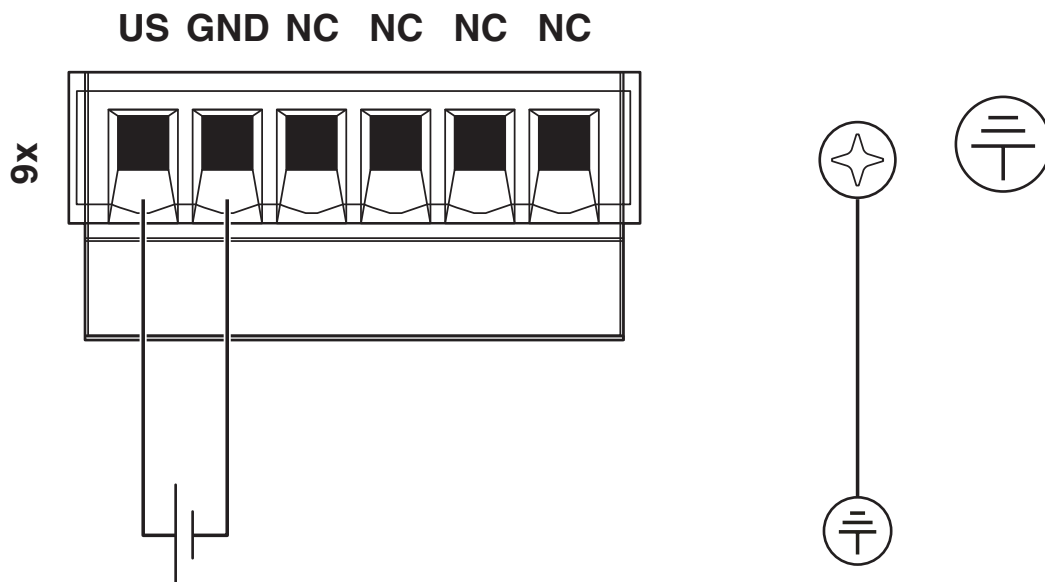


2891018

<https://www.phoenixcontact.com/us/products/2891018>

Drawings

Connection diagram



FL SWITCH SFN 8TX-PN - Industrial Ethernet Switch



2891018

<https://www.phoenixcontact.com/us/products/2891018>

Approvals

To download certificates, visit the product detail page: <https://www.phoenixcontact.com/us/products/2891018>



EAC

Approval ID: RU*-DE.*.B.00741/19



UL Listed

Approval ID: FILE E 140324



cUL Listed

Approval ID: FILE E 140324

cULus Listed

FL SWITCH SFN 8TX-PN - Industrial Ethernet Switch



2891018

<https://www.phoenixcontact.com/us/products/2891018>

Classifications

ECLASS

ECLASS-11.0	19170402
ECLASS-12.0	19170402
ECLASS-13.0	19170402

ETIM

ETIM 9.0	EC000734
----------	----------

UNSPSC

UNSPSC 21.0	43222600
-------------	----------

Environmental product compliance

EU RoHS	
Fulfills EU RoHS substance requirements	Yes
Exemption	6(c), 7(a), 7(c)-I
China RoHS	
Environment friendly use period (EFUP)	EFUP-10
	An article-related China RoHS declaration table can be found in the download area for the respective article under "Manufacturer declaration". For all articles with EFUP-E, no China RoHS declaration table issued and required.
EU REACH SVHC	
REACH candidate substance (CAS No.)	Lead(CAS: 7439-92-1)

2891018

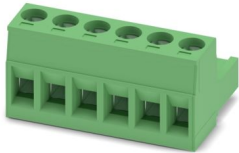
<https://www.phoenixcontact.com/us/products/2891018>

Accessories

MSTB 2,5/ 6-ST - PCB connector

1754520

<https://www.phoenixcontact.com/us/products/1754520>



PCB connector, nominal cross section: 2.5 mm², color: green, nominal current: 12 A, rated voltage (III/2): 320 V, contact surface: Sn, contact connection type: Socket, number of potentials: 6, number of rows: 1, number of positions: 6, number of connections: 6, product range: MSTB 2,5/...-ST, pitch: 5 mm, connection method: Screw connection with tension sleeve, screw head form: L Slotted, conductor/PCB connection direction: 0 °, locking clip: - Locking clip, plug-in system: COMBICON MSTB 2,5, locking: without, mounting: without, type of packaging: packed in cardboard

DT-LAN-CAT.6+ - Surge protection device

2881007

<https://www.phoenixcontact.com/us/products/2881007>



Surge protection in accordance with Class E_A (CAT6_A), for Gigabit Ethernet (up to 10 Gbps), token ring, FDDI/CDDI, ISDN, and DS1. Suitable for Power over Ethernet (PoE++ / 4PPoE) "Mode A" and "Mode B". RJ45 attachment plug with separate grounding cable and ground connection snap-on foot for NS 35 DIN rails.

FL SWITCH SFN 8TX-PN - Industrial Ethernet Switch



2891018

<https://www.phoenixcontact.com/us/products/2891018>

FL CAT5 PATCH 0,5 - Patch cable

2832263

<https://www.phoenixcontact.com/us/products/2832263>



Patch cable, CAT5, assembled, 0.5 m

FL CAT5 PATCH 1,0 - Patch cable

2832276

<https://www.phoenixcontact.com/us/products/2832276>



Patch cable, CAT5, assembled, 1 m

FL SWITCH SFN 8TX-PN - Industrial Ethernet Switch



2891018

<https://www.phoenixcontact.com/us/products/2891018>

FL CAT5 PATCH 2,0 - Patch cable

2832289

<https://www.phoenixcontact.com/us/products/2832289>

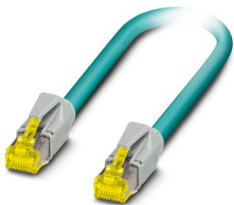


Patch cable, CAT5, assembled, 2 m

NBC-R4AC-R4AC-IE8A/.../... - Patch cable

1411854

<https://www.phoenixcontact.com/us/products/1411854>



Patch cable, degree of protection: IP20, number of positions: 8, 10 Gbps, CAT6_A, cable outlet: straight, Ethernet

FL SWITCH SFN 8TX-PN - Industrial Ethernet Switch



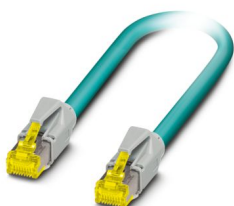
2891018

<https://www.phoenixcontact.com/us/products/2891018>

NBC-R4AC/10G-R4AC/10G-94F/2,0 - Patch cable

1408360

<https://www.phoenixcontact.com/us/products/1408360>

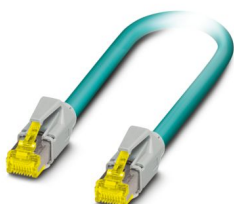


Patch cable, CAT6_A, 4-pair, shielded, connection not crossed (line), assembled at both ends with RJ45/IP20 connectors, outer sheath material: PUR, length: 2.0 m

NBC-R4AC/10G-R4AC/10G-94F/3,0 - Patch cable

1408365

<https://www.phoenixcontact.com/us/products/1408365>



Patch cable, CAT6_A, 4-pair, shielded, connection not crossed (line), assembled at both ends with RJ45/IP20 connectors, outer sheath material: PUR, length: 3.0 m

FL SWITCH SFN 8TX-PN - Industrial Ethernet Switch



2891018

<https://www.phoenixcontact.com/us/products/2891018>

FL SEC PAC 4TX - Port Guard Security Element

2832865

<https://www.phoenixcontact.com/us/products/2832865>

Layer1 security elements for 4 RJ45 network connections for use with patch boxes and panels



FL DIN RA - DIN rail adapter

2891053

<https://www.phoenixcontact.com/us/products/2891053>

The FL DIN RA is installed in a standard, 19-inch rack (EIA-310-D, IEC 60297-3-100) to allow DIN rail mounted equipment to be rack mounted.



FL SWITCH SFN 8TX-PN - Industrial Ethernet Switch



2891018

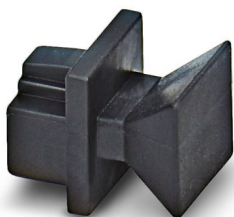
<https://www.phoenixcontact.com/us/products/2891018>

FL RJ45 PROTECT CAP - Dust protection

2832991

<https://www.phoenixcontact.com/us/products/2832991>

Dust protection caps for RJ45 socket

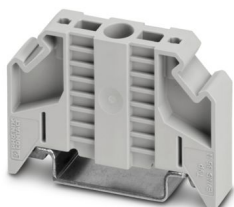


E/NS 35 N - End bracket

0800886

<https://www.phoenixcontact.com/us/products/0800886>

End clamp, width: 9.5 mm, color: gray



Phoenix Contact 2024 © - all rights reserved
<https://www.phoenixcontact.com>

Phoenix Contact USA
586 Fulling Mill Road
Middletown, PA 17057, United States
(+717) 944-1300
info@phoenixcon.com