

Please be informed that the data shown in this PDF document is generated from our online catalog. Please find the complete data in the user documentation. Our general terms of use for downloads are valid.



Ethernet switch with eight RJ45 ports, meets IEC 61850-3 and IEEE 1613 standards. Automatic detection of data transmission speed of 10/100 Mbps (RJ45) with autocrossing function.

Product description

Developed according to IEC 61850-3 (Ambient conditions)

Your advantages

- Wide operating temperature range of -40 °C ... 75 °C
- QoS-prioritized (Quality of Service) messages
- Network structure according to IEC 61850
- IEEE 1613
- Alarm contact for power supply and link status diagnostics
- Local diagnostic indicators with LEDs
- Intended for use in power substations
- Auto negotiation and autocrossing detection simplifies installation and setup

Commercial data

Item number	2891065
Packing unit	1 pc
Sales key	DN19
Product key	DNN115
Catalog page	Page 301 (C-6-2019)
GTIN	4046356764339
Weight per piece (including packing)	875 g
Weight per piece (excluding packing)	660 g
Customs tariff number	85176200
Country of origin	TW

FL SWITCH 1008E - Industrial Ethernet Switch



2891065

<https://www.phoenixcontact.com/us/products/2891065>

Technical data

Dimensions

Width	54.4 mm
Height	146.4 mm
Depth	125 mm

Material specifications

Housing material	Aluminum
------------------	----------

Mounting

Mounting type	DIN rail mounting
---------------	-------------------

Interfaces

Ethernet (RJ45)

Connection method	RJ45
Note on the connection method	Auto negotiation and autocrossing
Transmission speed	10/100 Mbps
Transmission physics	Ethernet in RJ45 twisted pair
Transmission length	100 m
No. of channels	8 (RJ45 ports)
Data flow control/protocols	IEC 61850-3, IEEE 1613

Product properties

Product type	Switch
Product family	Unmanaged Switch 1000
Type	Block design
MTTF	86.6 Years (MIL-HDBK-217F standard, temperature 25°C, operating cycle 100%)

Data management status

Article revision	05
------------------	----

Insulation characteristics

Protection class	III (VDE 0106, IEC 60536)
------------------	---------------------------

Switch functions

Basic functions	Unmanaged switch / autonegotiation, complies with IEEE 802.3, store and forward switching mode, includes QoS and alarm contact. Meets IEC 61850-3 and IEEE 1613 standards
Signal contact control voltage	24 V DC
Signal contact control current	100 mA
MAC address table	2k
Status and diagnostic indicators	LEDs: U _{S1} , U _{S2} (redundant voltage supply), link and activity per port
Additional functions	Autonegotiation

FL SWITCH 1008E - Industrial Ethernet Switch



2891065

<https://www.phoenixcontact.com/us/products/2891065>

Security functions

Basic functions	Unmanaged switch / autonegotiation, complies with IEEE 802.3, store and forward switching mode, includes QoS and alarm contact. Meets IEC 61850-3 and IEEE 1613 standards
-----------------	---

Electrical properties

Local diagnostics	US1, US2 Supply voltage Green LED
	LNK/ACT Link status/data transmission Green LED
	100 Data transmission speed Green LED
	Alarm Power failure at US1 or US2/Link failure
Maximum power dissipation for nominal condition	10.56 W
Transmission medium	Copper

Supply

Supply voltage (DC)	24 V DC (redundant)
	48 V DC
Supply voltage range	12 V DC ... 57 V DC
Inrush current	9.84 A (0.2 ms)
Residual ripple	3.6 V _{PP} (within the permitted voltage range)
Typical current consumption	440 mA (at U _S = 24 V DC)

Function

Signal contact control voltage	24 V DC
Signal contact control current	100 mA

Connection data

Connection technology

Connection name	Power supply
-----------------	--------------

Power supply

Connection method	COMBICON plug-in screw terminal block
Conductor cross section, rigid	0.2 mm ² ... 2.5 mm ²
Conductor cross section, flexible	0.2 mm ² ... 2.5 mm ²
Conductor cross section AWG	24 ... 14
Stripping length	7 mm

Environmental and real-life conditions

Ambient conditions

Degree of protection	IP20
Ambient temperature (operation)	-40 °C ... 75 °C
Ambient temperature (storage/transport)	-45 °C ... 85 °C
Permissible humidity (operation)	5 % ... 95 % (non-condensing)
Air pressure (operation)	82 kPa ... 108 kPa (up to 1500 m above sea level)

Standards and regulations

FL SWITCH 1008E - Industrial Ethernet Switch



2891065

<https://www.phoenixcontact.com/us/products/2891065>

Standards/specifications	IEC 61850-3
	IEEE 1613

EMC data

Conformance with EMC directives	IEC 61000-6-2 IEC 61000-4-2 (ESD) Criterion B
	IEC 61000-4-3 (immunity to radiated interference) Criterion A
	IEC 61000-4-4 (burst) Criterion A
	IEC 61000-4-5 (surge) Criterion B
	IEC 61000-4-6 (immunity to conducted interference) Criterion A
	IEC 61000-4-8 (immunity to magnetic fields) Criterion A
	IEC 61000-4-9 (immunity to pulsed magnetic field) Criterion B
	EN 55022 (emitted interference) Criterion B
Noise immunity	IEC 61850-3, IEEE 1613, EN 61000-6-2: 2005
Noise emission	EN 61000-6-4

System properties

Functionality	
Basic functions	Unmanaged switch / autonegotiation, complies with IEEE 802.3, store and forward switching mode, includes QoS and alarm contact. Meets IEC 61850-3 and IEEE 1613 standards

Signaling

Status display	LEDs: U _{S1} , U _{S2} (redundant voltage supply), link and activity per port
----------------	--

FL SWITCH 1008E - Industrial Ethernet Switch



2891065

<https://www.phoenixcontact.com/us/products/2891065>

Classifications

ECLASS

ECLASS-11.0	19170402
-------------	----------

ETIM

ETIM 8.0	EC000734
----------	----------

UNSPSC

UNSPSC 21.0	43222600
-------------	----------

FL SWITCH 1008E - Industrial Ethernet Switch



2891065

<https://www.phoenixcontact.com/us/products/2891065>

Environmental product compliance

EU RoHS	
Fulfills EU RoHS substance requirements	Yes
Exemption	6(c), 7(a), 7(c)-I
China RoHS	
Environment friendly use period (EFUP)	EFUP-10
	An article-related China RoHS declaration table can be found in the download area for the respective article under "Manufacturer declaration". For all articles with EFUP-E, no China RoHS declaration table issued and required.
EU REACH SVHC	
REACH candidate substance (CAS No.)	Lead(CAS: 7439-92-1)

2891065

<https://www.phoenixcontact.com/us/products/2891065>

Accessories

MSTB 2,5/ 2-ST - PCB connector

1754449

<https://www.phoenixcontact.com/us/products/1754449>

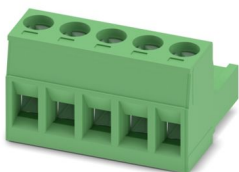


PCB connector, nominal cross section: 2.5 mm², color: green, nominal current: 12 A, rated voltage (III/2): 320 V, contact surface: Sn, contact connection type: Socket, number of potentials: 2, number of rows: 1, number of positions: 2, number of connections: 2, product range: MSTB 2,5/...-ST, pitch: 5 mm, connection method: Screw connection with tension sleeve, screw head form: L Slotted, conductor/PCB connection direction: 0 °, locking clip: - Locking clip, plug-in system: COMBICON MSTB 2,5, locking: without, mounting: without, type of packaging: packed in cardboard

MSTB 2,5/ 5-ST - PCB connector

1754504

<https://www.phoenixcontact.com/us/products/1754504>



PCB connector, nominal cross section: 2.5 mm², color: green, nominal current: 12 A, rated voltage (III/2): 320 V, contact surface: Sn, contact connection type: Socket, number of potentials: 5, number of rows: 1, number of positions: 5, number of connections: 5, product range: MSTB 2,5/...-ST, pitch: 5 mm, connection method: Screw connection with tension sleeve, screw head form: L Slotted, conductor/PCB connection direction: 0 °, locking clip: - Locking clip, plug-in system: COMBICON MSTB 2,5, locking: without, mounting: without, type of packaging: packed in cardboard

FL SWITCH 1008E - Industrial Ethernet Switch



2891065

<https://www.phoenixcontact.com/us/products/2891065>

DT-LAN-CAT.6+ - Surge protection device

2881007

<https://www.phoenixcontact.com/us/products/2881007>



Surge protection in accordance with Class E_A (CAT6_A), for Gigabit Ethernet (up to 10 Gbps), token ring, FDDI/CDDI, ISDN, and DS1. Suitable for Power over Ethernet (PoE++ / 4PPoE) "Mode A" and "Mode B". RJ45 attachment plug with separate grounding cable and ground connection snap-on foot for NS 35 DIN rails.

FL CAT5 PATCH 0,5 - Patch cable

2832263

<https://www.phoenixcontact.com/us/products/2832263>



Patch cable, CAT5, assembled, 0.5 m

FL SWITCH 1008E - Industrial Ethernet Switch



2891065

<https://www.phoenixcontact.com/us/products/2891065>

FL CAT5 PATCH 1,0 - Patch cable

2832276

<https://www.phoenixcontact.com/us/products/2832276>



Patch cable, CAT5, assembled, 1 m

FL CAT5 PATCH 2,0 - Patch cable

2832289

<https://www.phoenixcontact.com/us/products/2832289>



Patch cable, CAT5, assembled, 2 m

FL SWITCH 1008E - Industrial Ethernet Switch



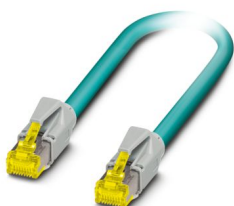
2891065

<https://www.phoenixcontact.com/us/products/2891065>

NBC-R4AC-R4AC-IE8A/.../... - Patch cable

1411854

<https://www.phoenixcontact.com/us/products/1411854>

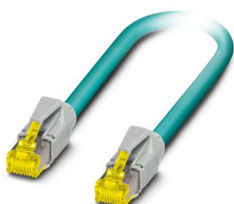


Patch cable, degree of protection: IP20, number of positions: 8, 10 Gbps, CAT6_A, cable outlet: straight, Ethernet

NBC-R4AC/10G-R4AC/10G-94F/2,0 - Patch cable

1408360

<https://www.phoenixcontact.com/us/products/1408360>



Patch cable, CAT6_A, 4-pair, shielded, connection not crossed (line), assembled at both ends with RJ45/IP20 connectors, outer sheath material: PUR, length: 2.0 m

FL SWITCH 1008E - Industrial Ethernet Switch



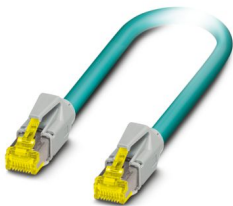
2891065

<https://www.phoenixcontact.com/us/products/2891065>

NBC-R4AC/10G-R4AC/10G-94F/3,0 - Patch cable

1408365

<https://www.phoenixcontact.com/us/products/1408365>

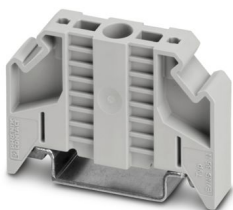


Patch cable, CAT6_A, 4-pair, shielded, connection not crossed (line), assembled at both ends with RJ45/IP20 connectors, outer sheath material: PUR, length: 3.0 m

E/NS 35 N - End bracket

0800886

<https://www.phoenixcontact.com/us/products/0800886>



End clamp, width: 9.5 mm, color: gray

FL SWITCH 1008E - Industrial Ethernet Switch

2891065

<https://www.phoenixcontact.com/us/products/2891065>

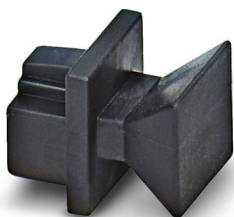


FL RJ45 PROTECT CAP - Dust protection

2832991

<https://www.phoenixcontact.com/us/products/2832991>

Dust protection caps for RJ45 socket



FL SEC PAC 4TX - Port Guard Security Element

2832865

<https://www.phoenixcontact.com/us/products/2832865>

Layer1 security elements for 4 RJ45 network connections for use with patch boxes and panels



Phoenix Contact 2024 © - all rights reserved
<https://www.phoenixcontact.com>

Phoenix Contact USA
586 Fulling Mill Road
Middletown, PA 17057, United States
(+717) 944-1300
info@phoenixcon.com