

# CM125-LG/H 35/BO BK - Electronics housing



2942904

<https://www.phoenixcontact.com/us/products/2942904>

Please be informed that the data shown in this PDF document is generated from our online catalog. Please find the complete data in the user documentation. Our general terms of use for downloads are valid.



Complete housing, Complete housing, with vents, width: 125 mm, depth: 102 mm, color: black (similar RAL 9005), cross connection: without bus connector, number of positions cross connector: not relevant

## Your advantages

- Robust housing technology
- Easy snap-on mounting on symmetrical DIN rails in accordance with EN 60715
- Touch-proof and contamination-proof accommodation of the electronics
- Flexible accommodation of different connection elements (from high-position connectors to electronic PCB terminal blocks)

## Commercial data

Item number	2942904
Packing unit	5 pc
Minimum order quantity	1 pc
Sales key	AC11
Product key	ACHCDA
Catalog page	Page 737 (C-1-2013)
GTIN	4017918080907
Weight per piece (including packing)	324.4 g
Weight per piece (excluding packing)	322 g
Customs tariff number	84879090
Country of origin	DE

# CM125-LG/H 35/BO BK - Electronics housing



2942904

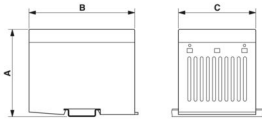
<https://www.phoenixcontact.com/us/products/2942904>

## Technical data

### Product properties

Product type	Complete housing
Housing type	Complete housing
Housing series	CM
Product family	CM LG
Type	Housing closed, ventilation slots
Type	Complete housing

### Dimensions

Dimensional drawing	
Width	125 mm
Depth	102 mm

### Material specifications

Color (Housing)	black (RAL 9005)
Flammability rating according to UL 94	V0
Housing material	Polycarbonate, glass-fiber-reinforced
Surface characteristics	untreated

### Environmental and real-life conditions

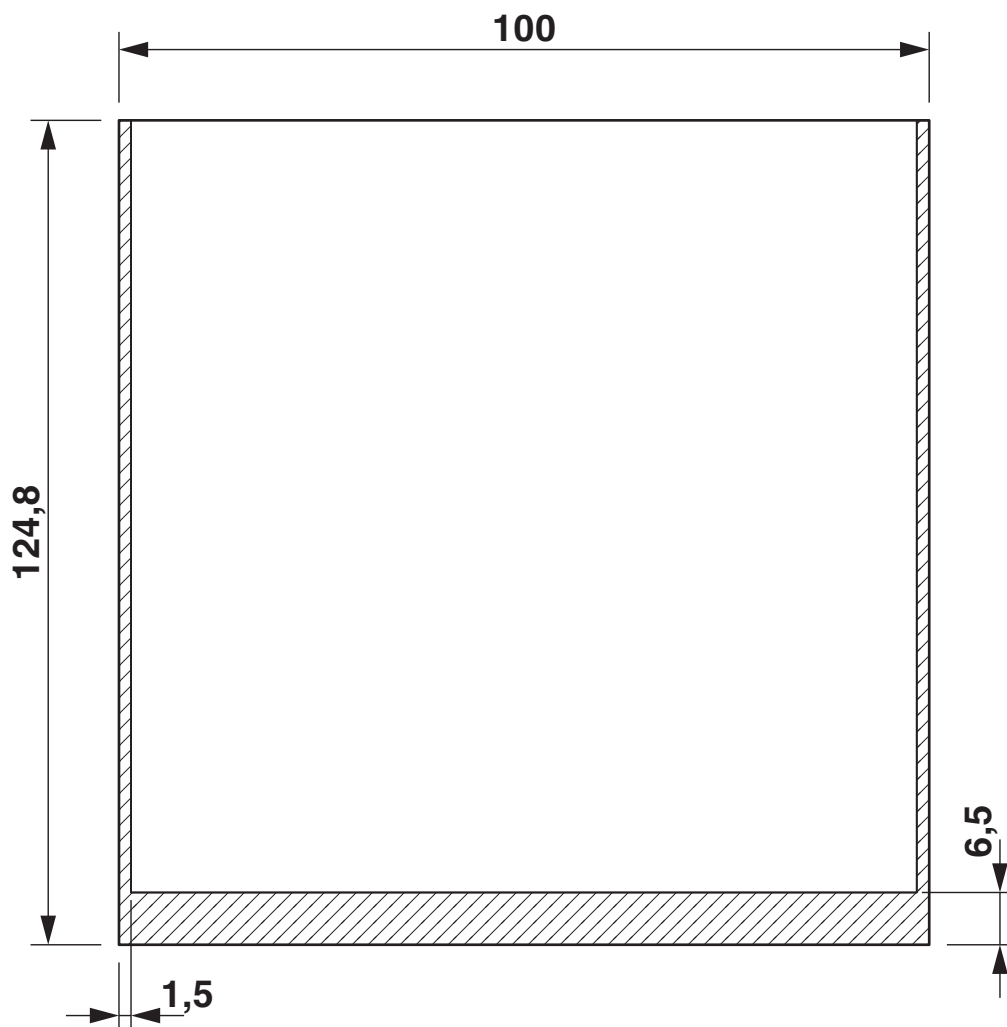
Ambient conditions	
Ambient temperature (operation)	-40 °C ... 105 °C (depending on power dissipation)

### Mounting

Mounting type	DIN rail mounting
---------------	-------------------

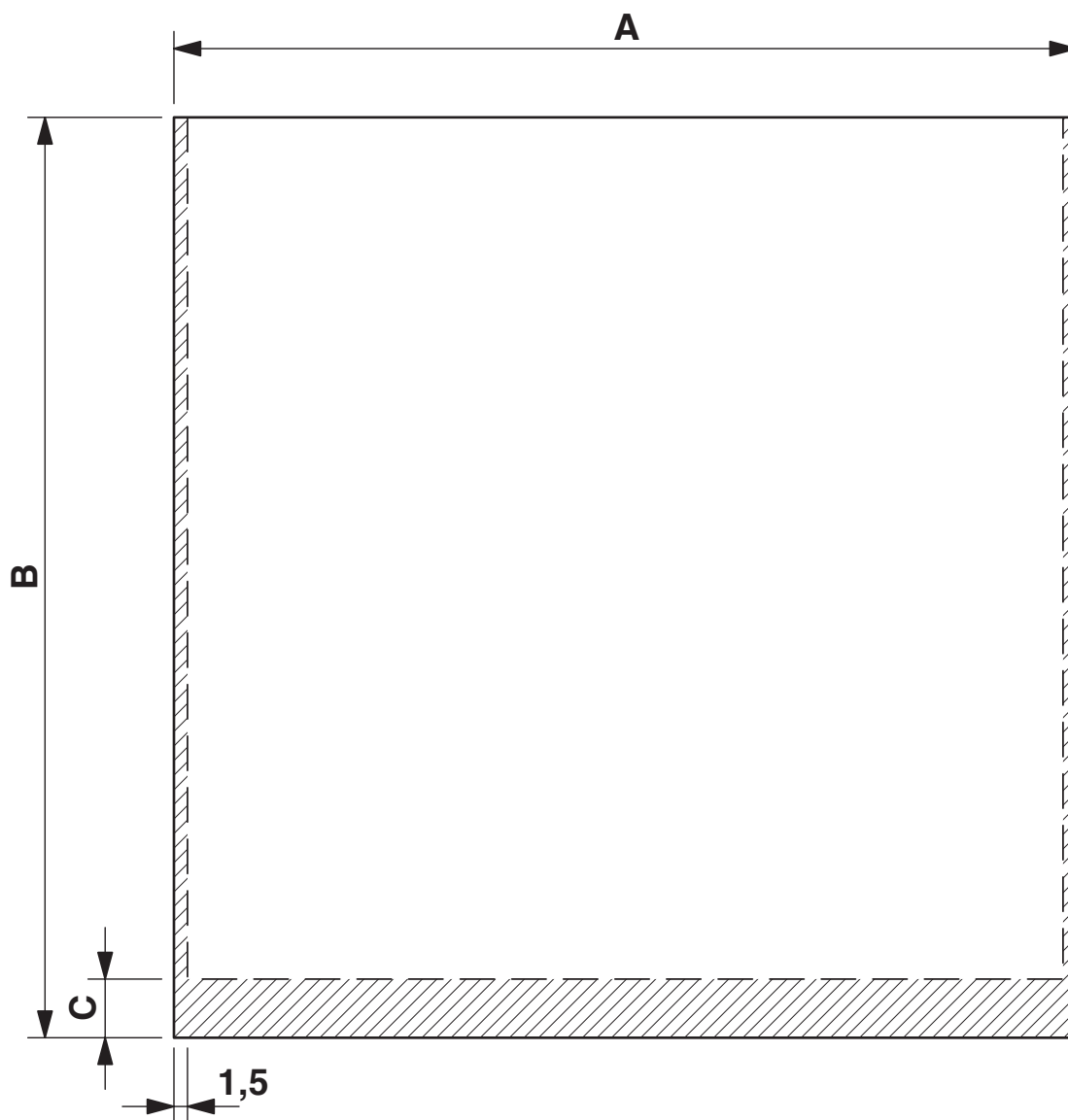
## Drawings

Dimensional drawing



valid for PCB 8 and 13, see explosion drawing

Dimensional drawing



PCB 1, 7: Dimension A: 122.5 mm; B: 124.8 mm; C: 0 mm

PCB 8, 13: Dimension A: 100.0 mm; B: 124.8 mm; C: 6.5 mm

PCB 9-12: Dimension A: 100.0 mm; B: 124.8 mm; C: 0 mm

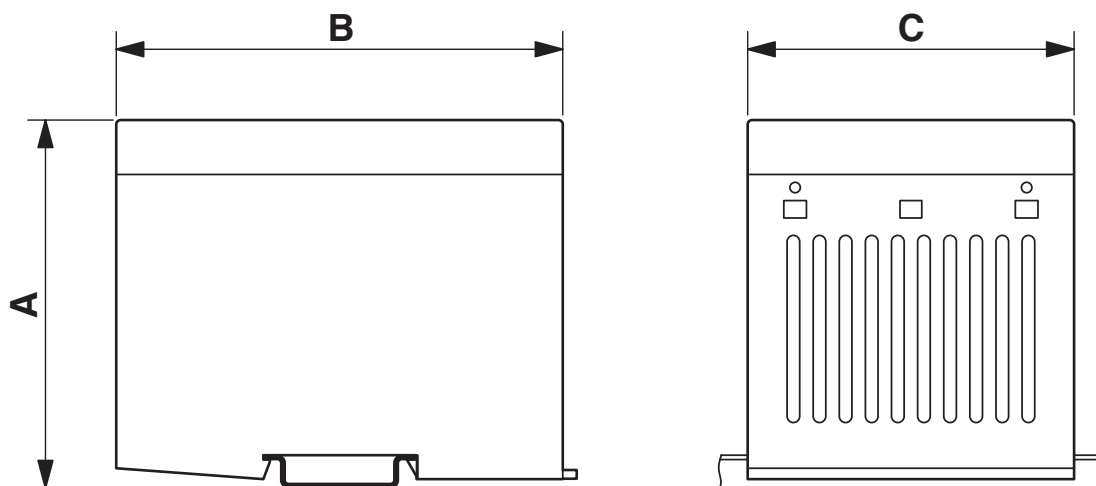
# CM125-LG/H 35/BO BK - Electronics housing

2942904

<https://www.phoenixcontact.com/us/products/2942904>

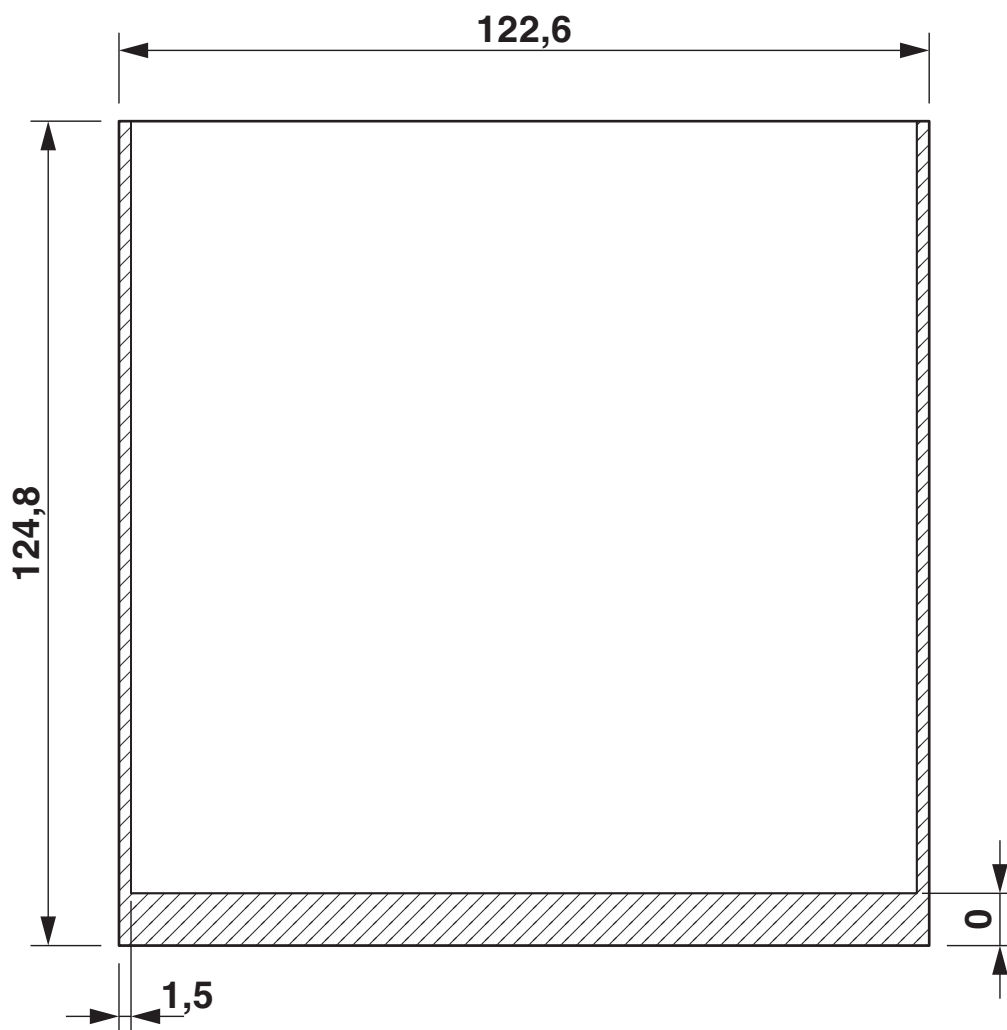


Dimensional drawing



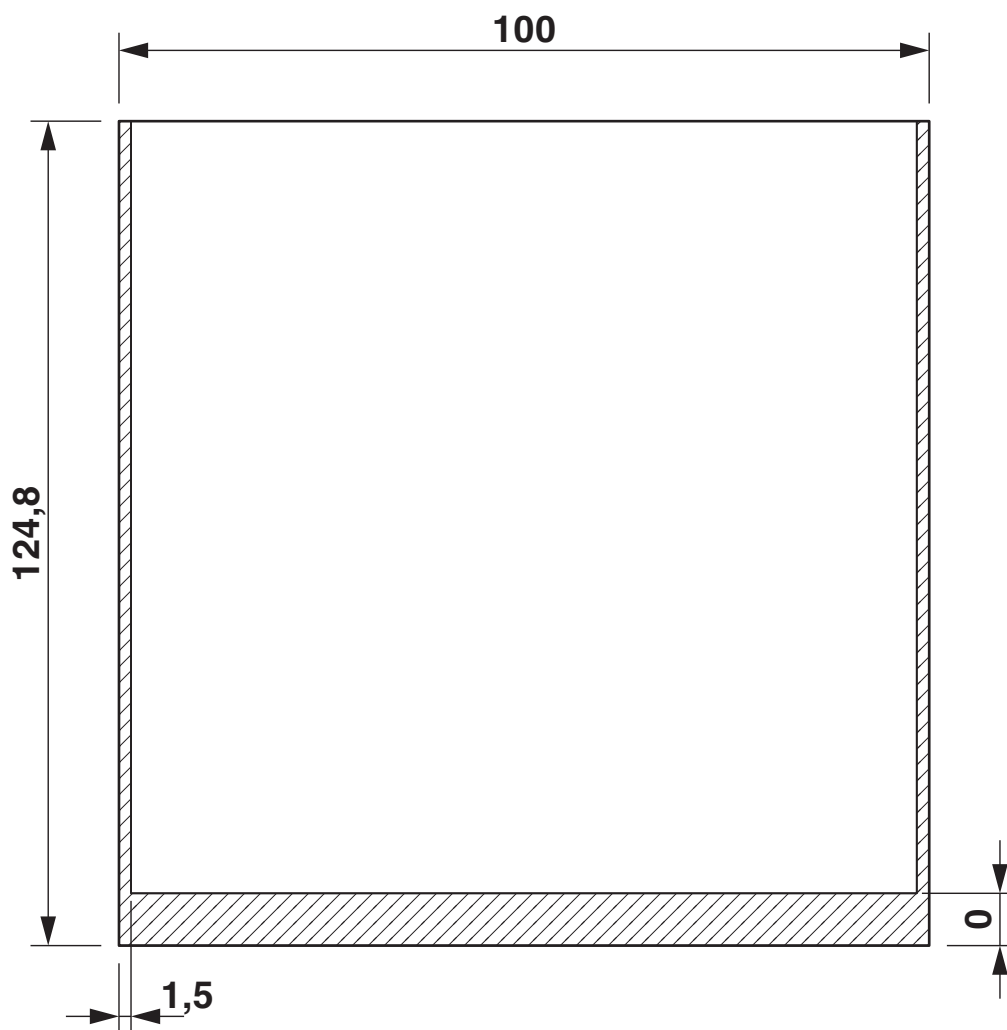
Dimension A: 138 mm; dimension B: 102 mm; dimension C: 125 mm

Dimensional drawing



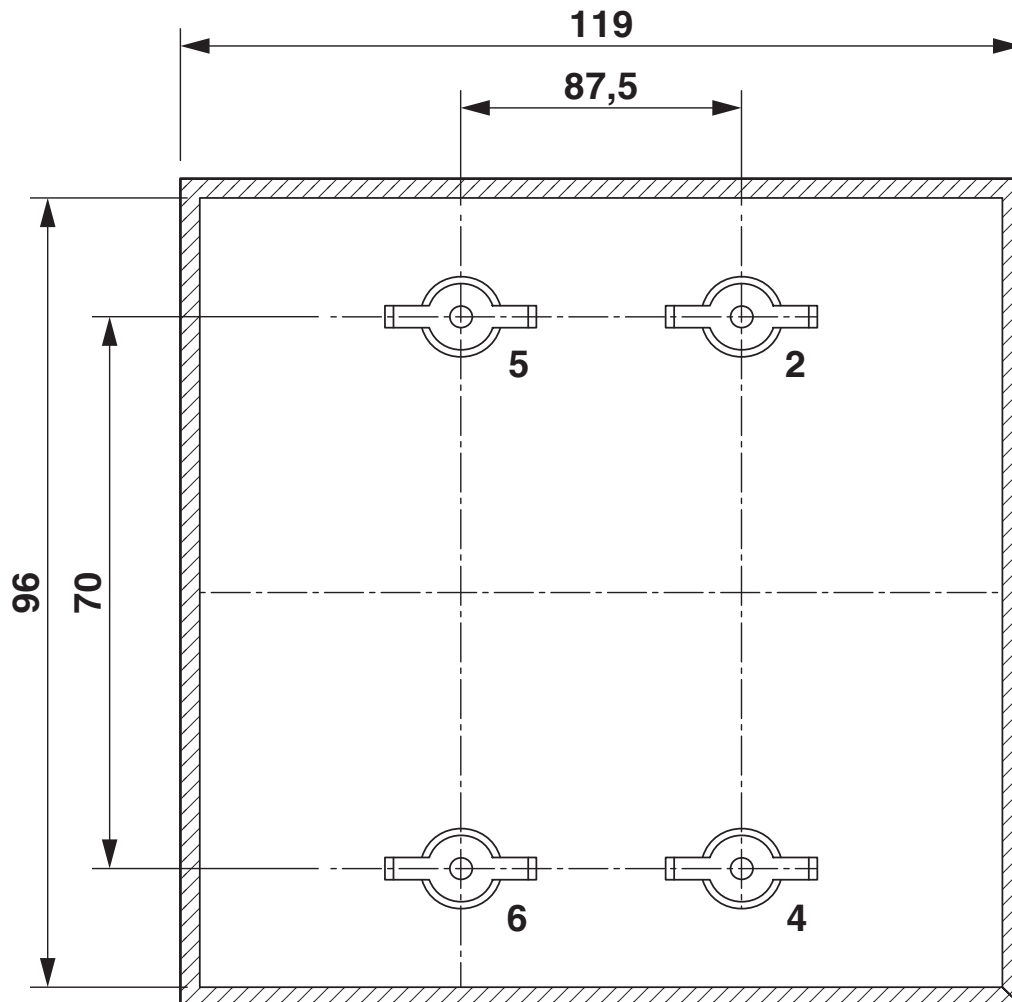
valid for PCB 1 and 7, see explosion drawing

Dimensional drawing



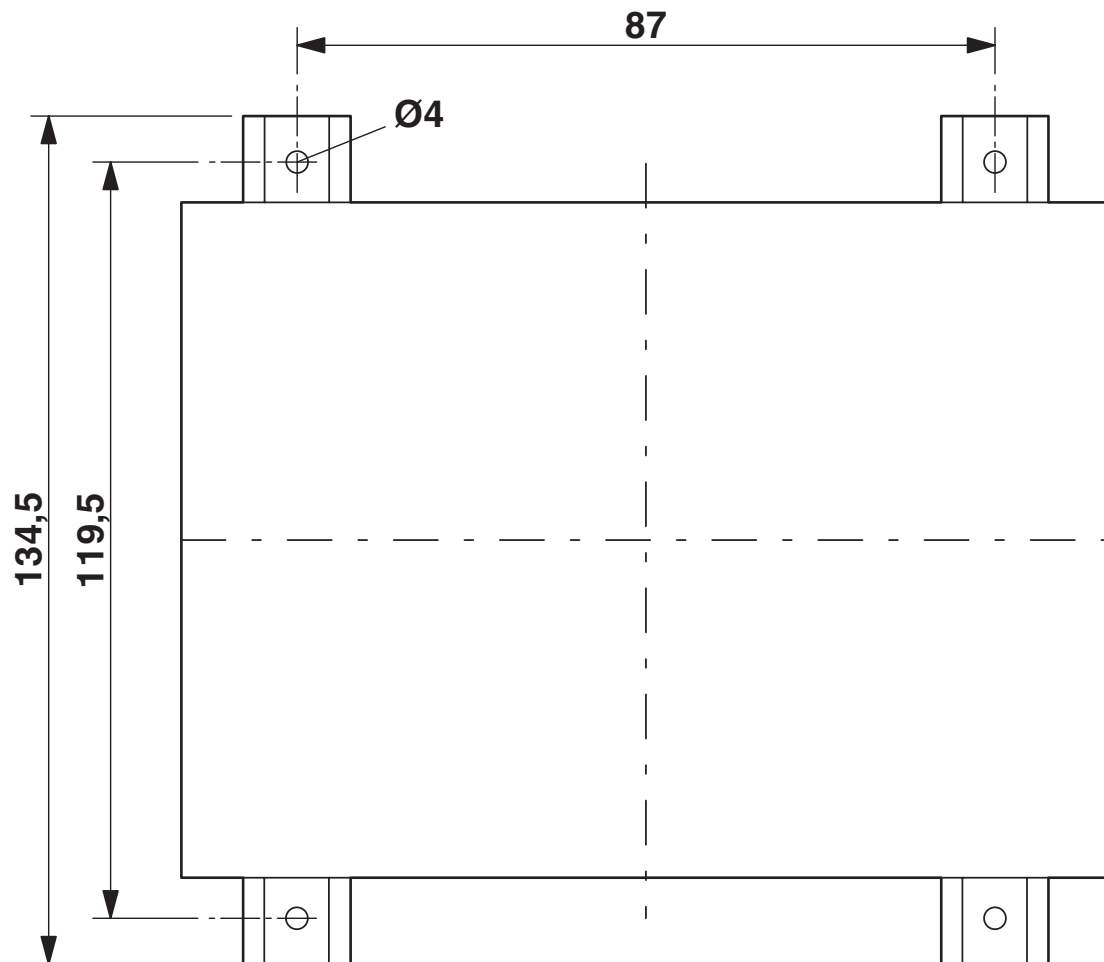
valid for PCB 9 to 12, see explosion drawing

Dimensional drawing





Dimensional drawing



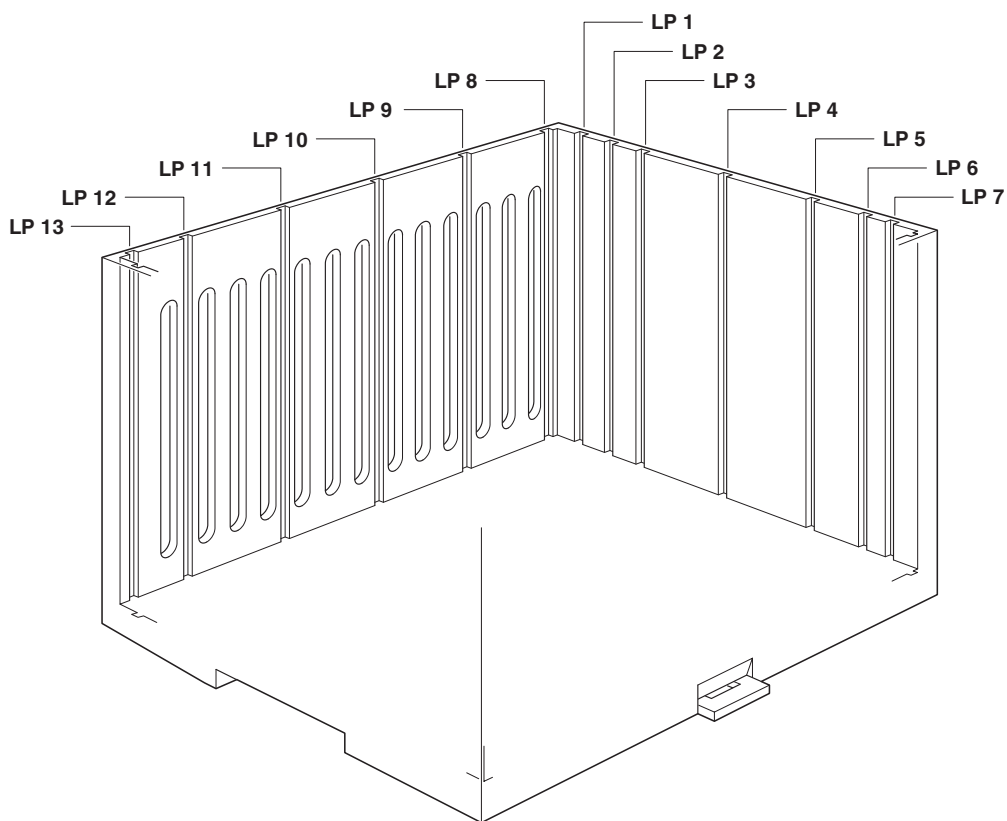
# CM125-LG/H 35/BO BK - Electronics housing



2942904

<https://www.phoenixcontact.com/us/products/2942904>

Schematic diagram



# CM125-LG/H 35/BO BK - Electronics housing



2942904

<https://www.phoenixcontact.com/us/products/2942904>

## Classifications

### ECLASS

ECLASS-11.0	27182702
ECLASS-13.0	27190101

### ETIM

ETIM 9.0	EC001031
----------	----------

### UNSPSC

UNSPSC 21.0	31261500
-------------	----------

# CM125-LG/H 35/BO BK - Electronics housing



2942904  
<https://www.phoenixcontact.com/us/products/2942904>

## Environmental product compliance

EU RoHS	
Fulfills EU RoHS substance requirements	Yes, No exemptions
China RoHS	
Environment friendly use period (EFUP)	EFUP-E
	No hazardous substances above the limits
EU REACH SVHC	
REACH candidate substance (CAS No.)	No substance above 0.1 wt%

Phoenix Contact 2024 © - all rights reserved  
<https://www.phoenixcontact.com>

Phoenix Contact USA  
586 Fulling Mill Road  
Middletown, PA 17057, United States  
(+717) 944-1300  
[info@phoenixcon.com](mailto:info@phoenixcon.com)