



Wire Protection & Management > Cable Glands > Plastic Drain Plug



Cable Gland Product Type: **Drain Plug**

Primary Product Material: **PA66**

Primary Product Color: **Black**

Outer Thread Size: **M12 x 1.5**

Sealable: **Yes**

[All Plastic Drain Plug \(6\)](#)

Features

Product Type Features

Cable Gland Product Type	Drain Plug
Sealable	Yes

Body Features

Primary Product Material	PA66
Primary Product Color	Black

Dimensions

Outer Thread Size	M12 x 1.5
-------------------	-----------

Usage Conditions

Operating Temperature Range	-60 – 85 °C[-76 – 185 °F]
-----------------------------	---------------------------

Industry Standards

IP Rating	IP56
-----------	------

Packaging Features

Packaging Method	Bag
------------------	-----



Product Compliance

For compliance documentation, visit the product page on TE.com>

EU RoHS Directive 2011/65/EU	Compliant
EU ELV Directive 2000/53/EC	Compliant
China RoHS 2 Directive MIIT Order No 32, 2016	No Restricted Materials Above Threshold
EU REACH Regulation (EC) No. 1907/2006	Current ECHA Candidate List: JUNE 2024 (241) Candidate List Declared Against: JAN 2023 (233) Does not contain REACH SVHC
Halogen Content	Not Yet Reviewed for halogen content
Solder Process Capability	Not reviewed for solder process capability

Product Compliance Disclaimer

This information is provided based on reasonable inquiry of our suppliers and represents our current actual knowledge based on the information they provided. This information is subject to change. The part numbers that TE has identified as EU RoHS compliant have a maximum concentration of 0.1% by weight in homogenous materials for lead, hexavalent chromium, mercury, PBB, PBDE, DBP, BBP, DEHP, DIBP, and 0.01% for cadmium, or qualify for an exemption to these limits as defined in the Annexes of Directive 2011/65/EU (RoHS2). Finished electrical and electronic equipment products will be CE marked as required by Directive 2011/65/EU. Components may not be CE marked. Additionally, the part numbers that TE has identified as EU ELV compliant have a maximum concentration of 0.1% by weight in homogenous materials for lead, hexavalent chromium, and mercury, and 0.01% for cadmium, or qualify for an exemption to these limits as defined in the Annexes of Directive 2000/53/EC (ELV). Regarding the REACH Regulation, the information TE provides on SVHC in articles for this part number is based on the latest European Chemicals Agency (ECHA) 'Guidance on requirements for substances in articles' posted at this URL: <https://echa.europa.eu/guidance-documents/guidance-on-reach>

Compatible Parts



Customers Also Bought



TE Part #3-2176231-6
3522 300R 1% 3W



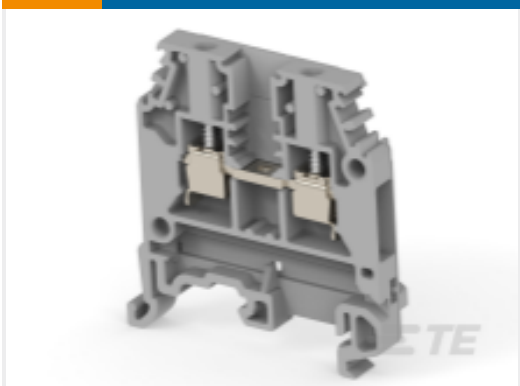
TE Part #1SNG608001R0000
EM-LN-M12-MET-A



TE Part #710036-4
XCT 35-12



TE Part #1SNA115116R0700
M4/6



TE Part #1SNA115486R0300
MA2.5/5



TE Part #1SNA118368R1600
FEM6

Documents

Product Drawings

EP-DRP-M12-BL-A

English

CAD Files

3D PDF

3D

Customer View Model

ENG_CVM_CVM_1SNG611003R0000_A.2d_dxf.zip

English

Customer View Model

ENG_CVM_CVM_1SNG611003R0000_A.3d_igs.zip

English

Customer View Model

ENG_CVM_CVM_1SNG611003R0000_A.3d_stp.zip

English

By downloading the CAD file I accept and agree to the [Terms and Conditions](#) of use.

Datasheets & Catalog Pages

Catalog - ENTRELEC Cable Glands

English