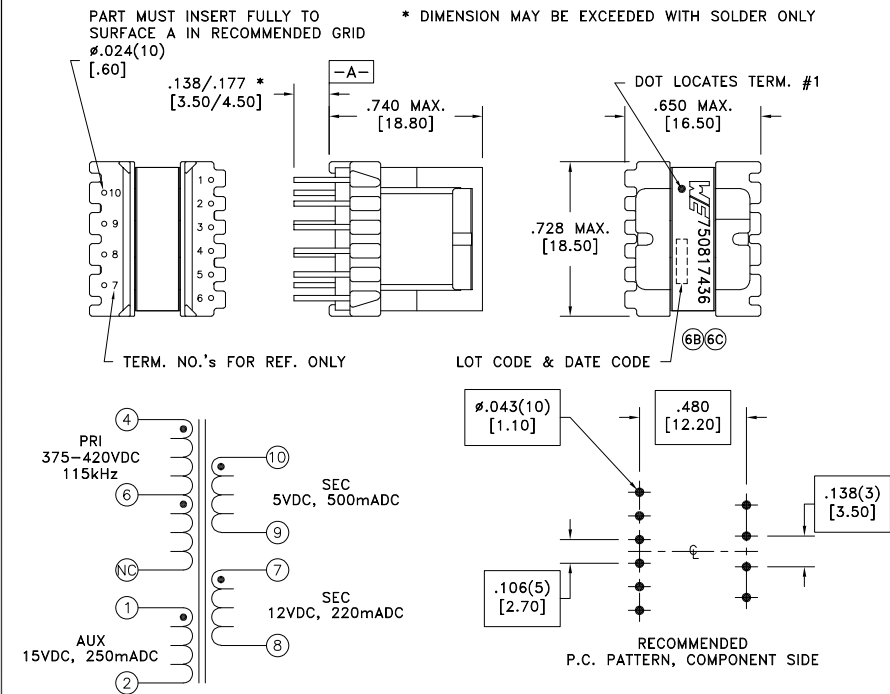


CUSTOMER TERMINAL	RoHS	LEAD(Pb)-FREE
Sn96%, Ag4%	Yes	Yes

more than you expect



ELECTRICAL SPECIFICATIONS @ 25°C unless otherwise noted:

PARAMETER	TEST CONDITIONS	VALUE
D.C. RESISTANCE	4-6 @20°C	8.00 ohms ±10%
D.C. RESISTANCE	1-2 @20°C	0.355 ohms ±10%
D.C. RESISTANCE	10-9 @20°C	0.070 ohms max.
D.C. RESISTANCE	7-8 @20°C	0.370 ohms max.
INDUCTANCE	4-6 10kHz, 100mVAC, Ls	2.30mH ±10%
SATURATION CURRENT	20% rolloff from initial	420mA
LEAKAGE INDUCTANCE	4-6 tie(1+2, 7+8+9+10), 100kHz, 100mVAC, Ls	120uH max.
DIELECTRIC	4-10 tie(1+6, 7+9), 4000VAC, 1 second	3000VAC, 1 minute
DIELECTRIC	4-1 625VAC, 1 second	500VAC, 1 minute
URNS RATIO	(4-6):(1-2)	6.38:1, ±2%
URNS RATIO	(4-6):(10-9)	19.14:1, ±2%
URNS RATIO	(4-6):(7-8)	7.88:1, ±2%

GENERAL SPECIFICATIONS: 6B6C

OPERATING TEMPERATURE RANGE: -40°C to +125°C including temp rise.

Designed to comply with the following requirements as defined by IEC60950-1, EN60950-1, UL60950-1/CSA60950-1 and AS/NZS60950.1:

- Reinforced insulation for a primary circuit at a working voltage of 265Vrms, 420Vpeak, Overvoltage Category II.

REV.	DATE	Packaging Specifications	Tolerances unless otherwise specified:	DRAWING TITLE	PART NO.
6C	10/22	Method: Tray PKG-0967 www.we-online.com/midcom	Angles: ±1° Fractions: ±1/64	TRANSFORMER	750817436
6B	1/16	SEE REVISION SHEET FOR REVISION LEVEL	Decimals: ±.005 [1.3] Footprint: ±.001 [1.03]	eiSos p/n: 750817436	SPECIFICATION SHEET 1 OF 1
6A	7/15		This drawing is dual dimensioned. Dimensions in brackets are in millimeters.		